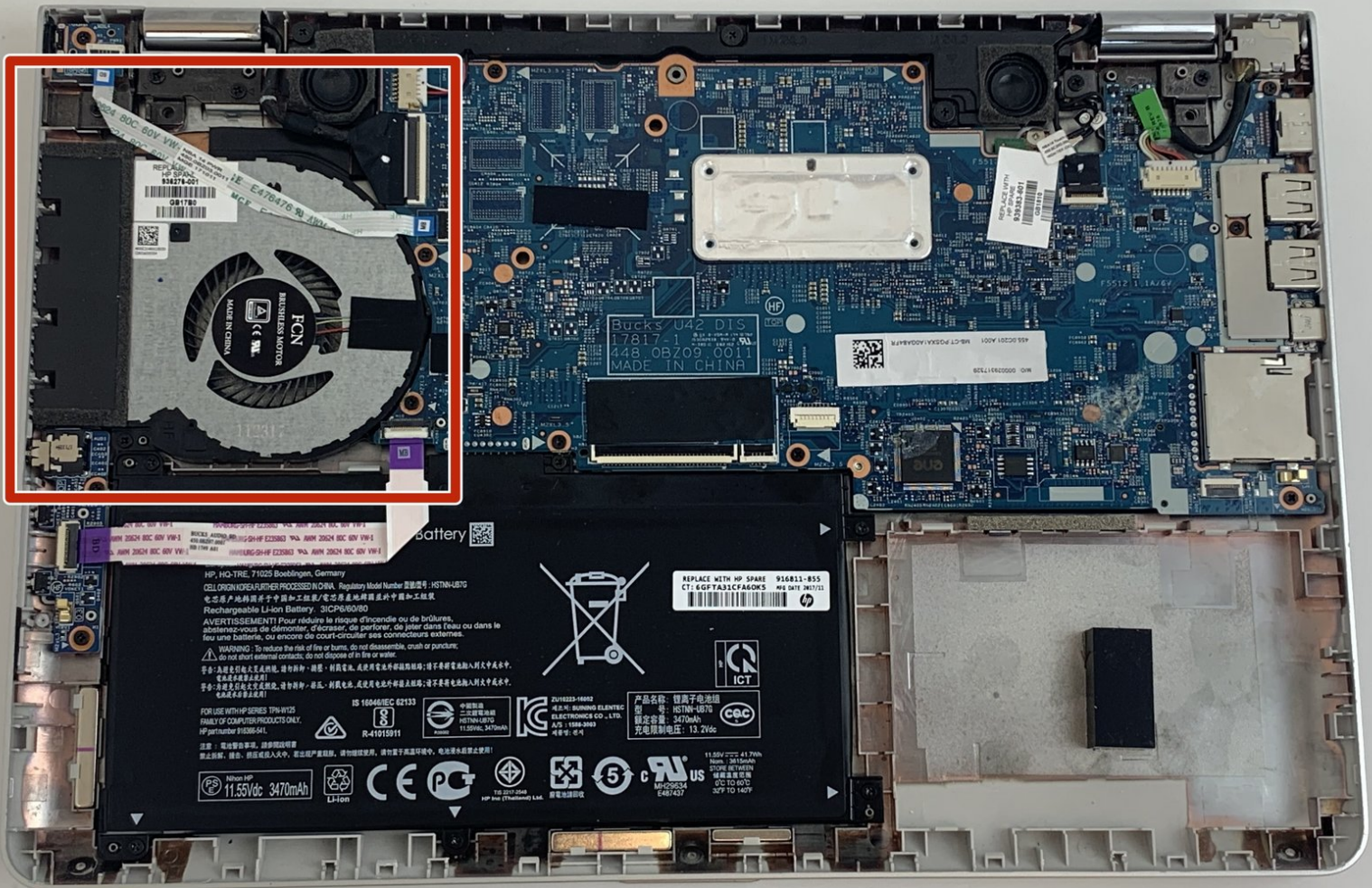




HP Pavilion x360 14m-ba114dx Fan Replacement

This guide will teach you how to replace the cooling fan screwed to the back of the motherboard in the HP Pavilion x360 14m-ba114dx.

Written By: Caleb Murray



INTRODUCTION

This guide will help you replace the cooling fan in your HP Pavilion x360 14m-ba114dx laptop. The fan is responsible for keeping the laptop cool and dissipating heat that builds up as a result of the electronic components in the laptop. If your laptop is extraordinarily loud, is making strange noises, or is overheating, there may be a problem with your laptop's cooling fan. Please visit [this troubleshooting page](#) for possible solutions to the problem. If none of these solutions work, use this guide to replace the fan.

A prerequisite to this guide is removal of the battery. If you notice once the laptop is open that the battery is swollen, remove it with caution. If swollen, do not charge the battery, keep the battery at a stable room temperature, and dispose of it properly at a recycling center. [This page](#) will help you deal with a swollen battery.

Also, make sure that you unplug your device from any external power sources and completely power it off before beginning this replacement.



TOOLS:

- [ESD Safe Tweezers Blunt Nose](#) (1)
- [Phillips #1 Screwdriver](#) (1)
- [Phillips #0 Screwdriver](#) (1)
- [Spudger](#) (1)
- [iFixit Opening Tool](#) (1)
- [iFixit Opening Picks \(Set of 6\)](#) (1)
- [Halberd Spudger](#) (1)

Step 1 — Battery



- Using a #0 Phillips-head screwdriver, remove the three 5 mm screws along the bottom of the back cover.
- Using a #0 Phillips-head screwdriver, remove the 6 mm screw at the top of the back cover.

Step 2



- Using the flat end of the Spudger, pry up the two rubber feet on the top of the laptop's back cover.
- Using a #0 Phillips-head screwdriver, remove the 8 mm screw under each of the rubber feet.

Step 3



- Open the laptop, with the display fully extended to 360 degrees so that the screen is on the table.

⚠ In this orientation, sliding the laptop around may scratch the screen. A blanket or a mat placed under the screen will help to prevent scratching.

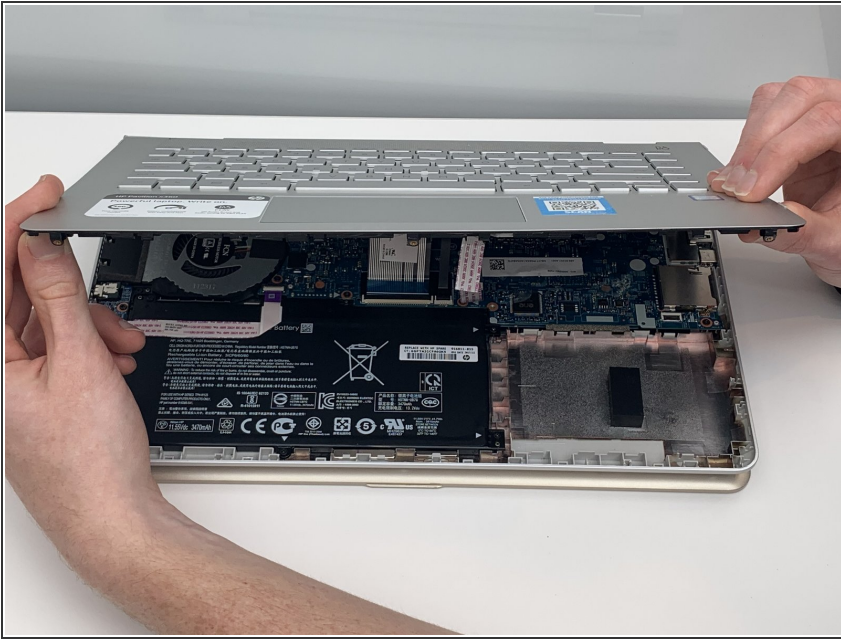
- Using the thinner end of an iFixit Plastic Opening Tool, pry open the keyboard panel from the base of the laptop near the screen hinges.

Step 4



- Using the iFixit Plastic Opening Tool and the iFixit Opening Picks, work your way around the rest of the keyboard and pry it out of the base.

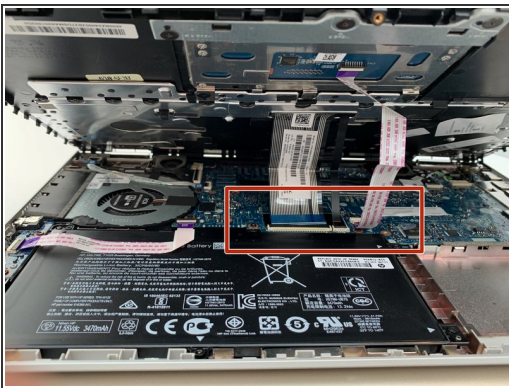
Step 5



- Grasp the keyboard with both hands and gently lift it out of the base.

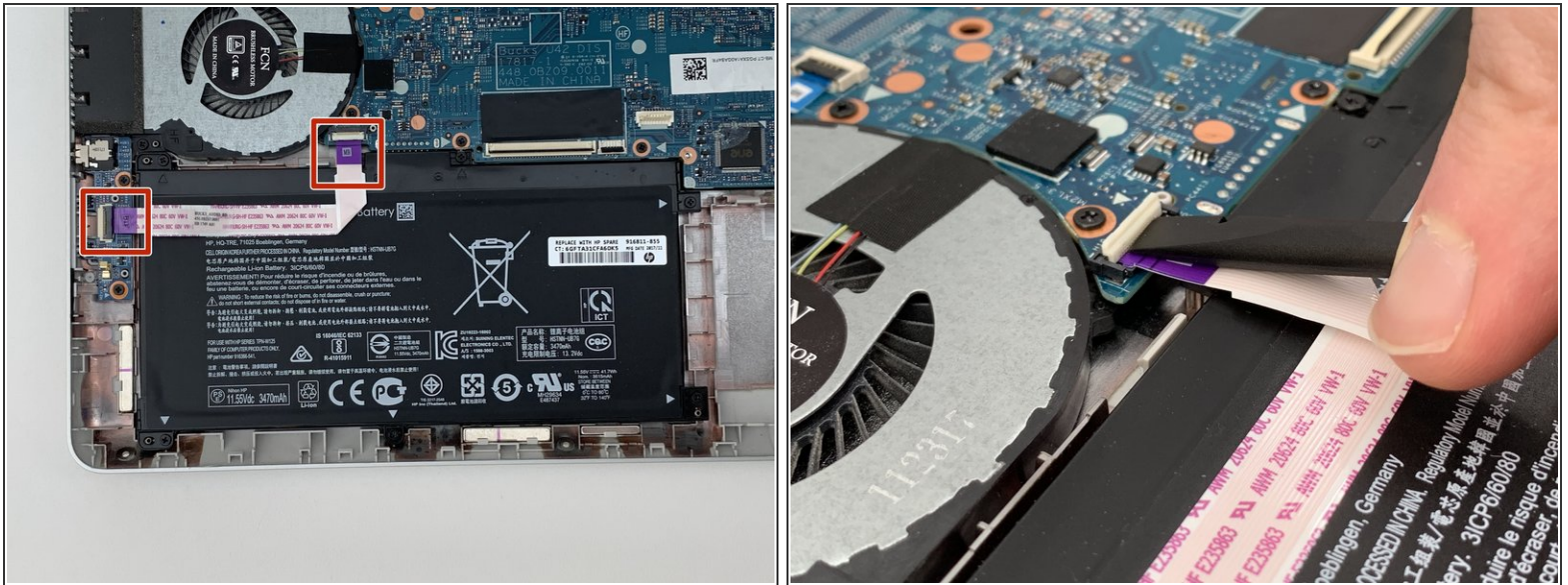
⚠ Do not lift the keyboard completely out of the base, as there are ZIF connectors that must be removed first.

Step 6



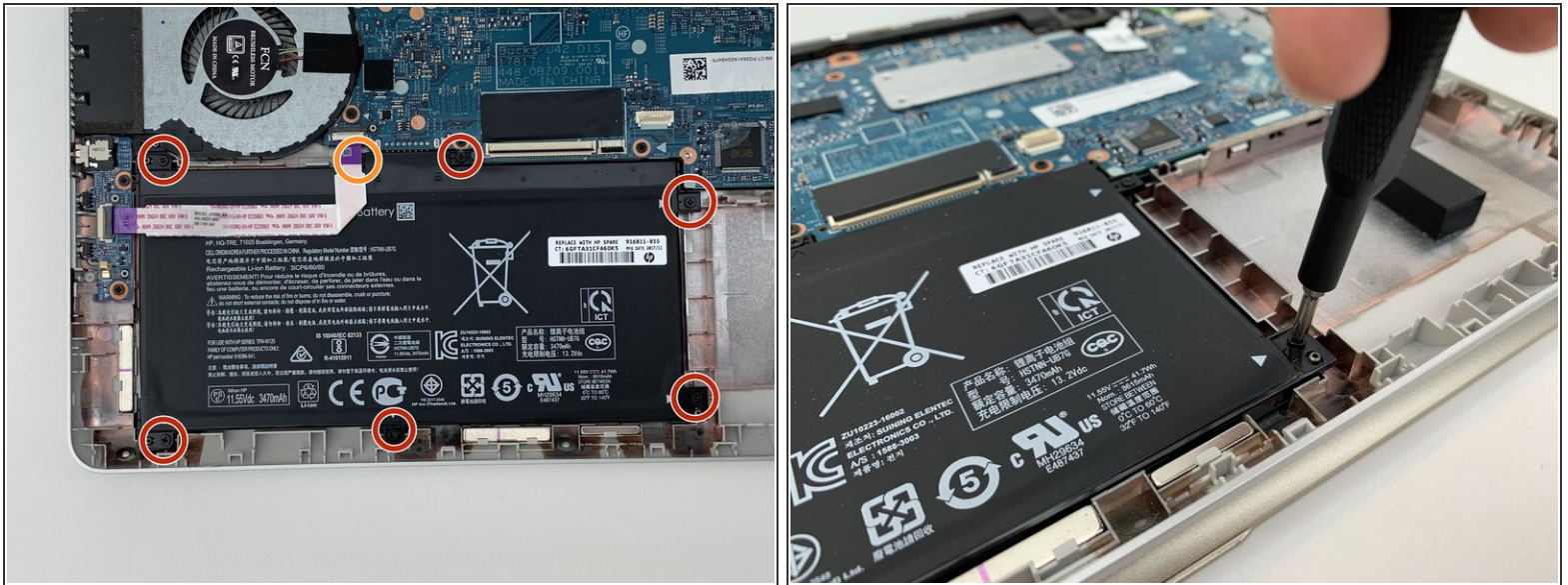
- Using a plastic Spudger, remove the ZIF connectors that attach the motherboard to the touchpad and the keyboard. Use the flat end of the Spudger to pop up the cap on top of the connector. The connector will then slide out of place.
- Repeat this step for all three connectors.

Step 7



- Using the flat end of the plastic Spudger, remove the ZIF connector attaching the volume button and headphone jack to the motherboard.
- ⓘ This ZIF ribbon is glued to the middle of the battery. You do not need to separate this ribbon from the battery in order to remove the battery from the device. You only need to unclip it at both ends.

Step 8



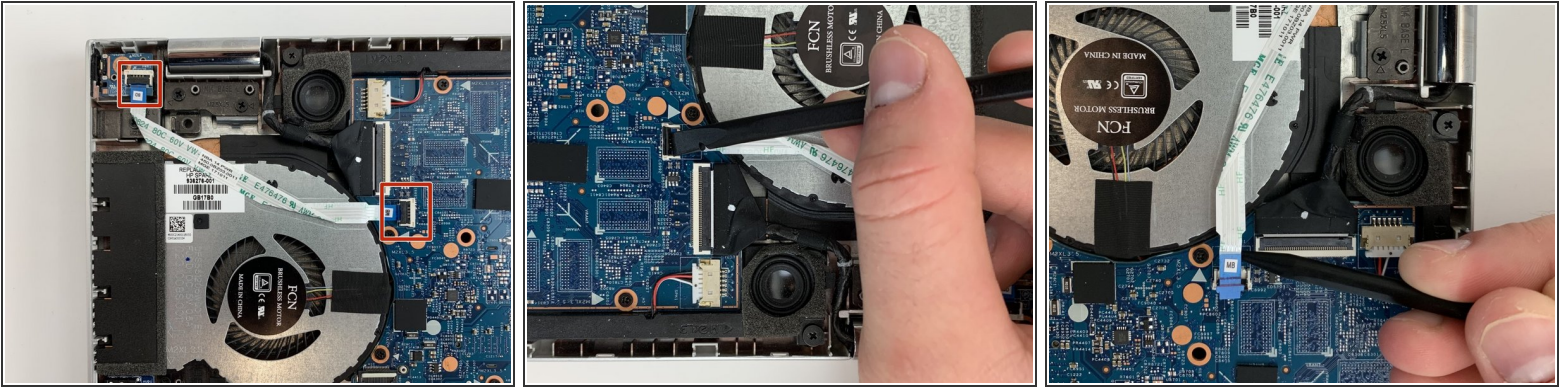
- Using a #1 Phillips-head screwdriver, remove the seven 4 mm screws around the battery.
- Gently move the ZIF connector out of the way to reach the screw marked in orange. Then use the #1 Phillips-head screwdriver to unscrew it.

Step 9



- Using the thin end of the iFixit Plastic Opening Tool, pry the battery out of its place inside the laptop's base.
- Next, use your fingers to pull the battery out of its position.

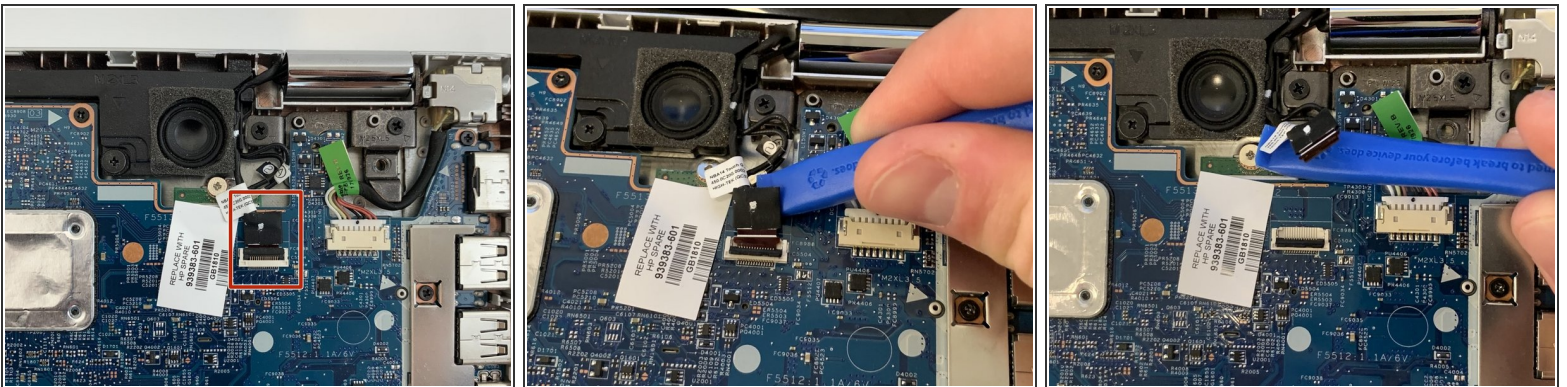
Step 10 — Motherboard



- Using the plastic Spudger, remove the ZIF connector connecting the power button board to the motherboard. Remove the connector by popping the cap up on top of the connector and sliding it out of its slot.

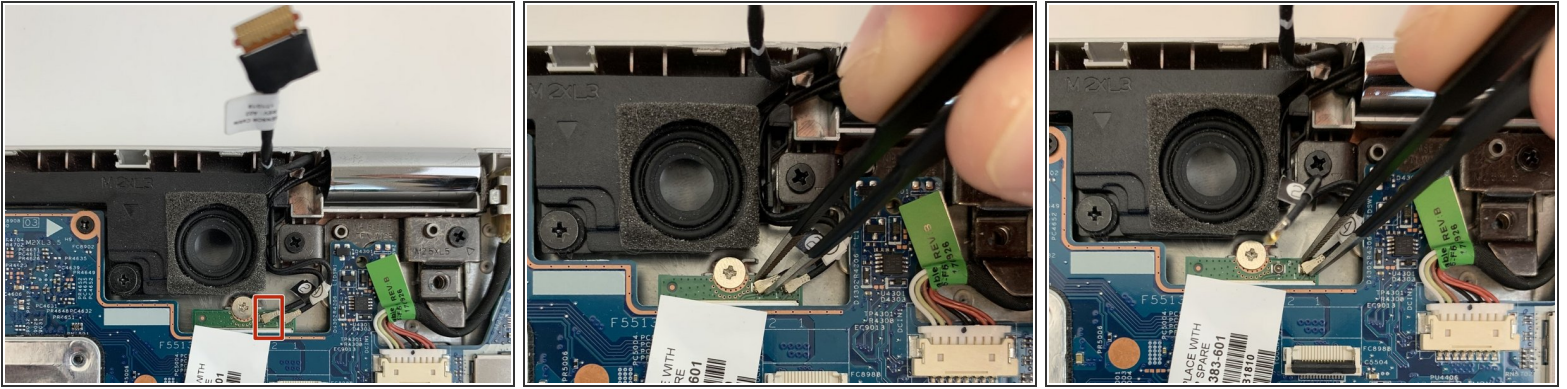
i This ZIF ribbon is glued to the middle of the fan and will not come off.

Step 11



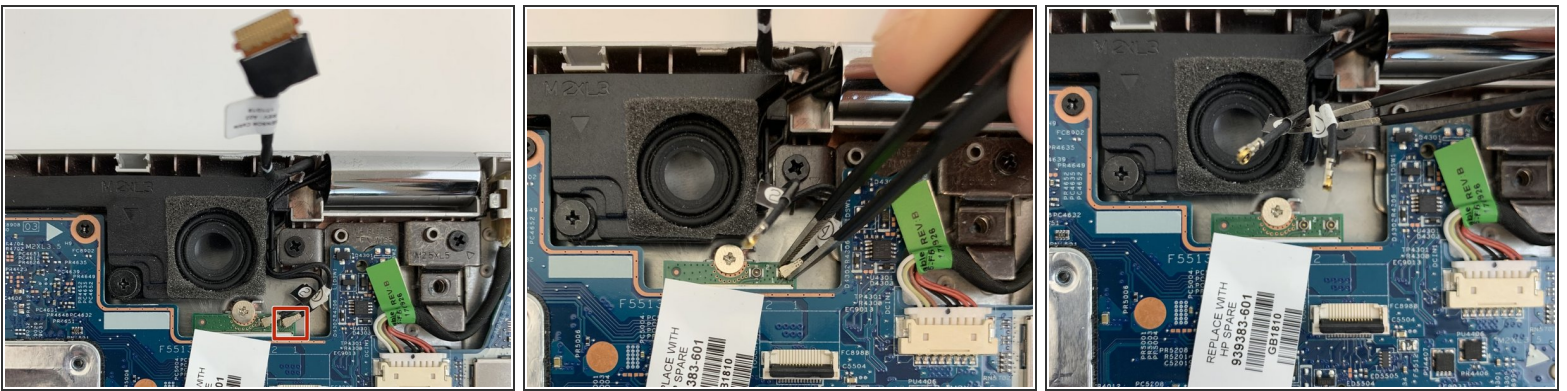
- Using the iFixit Plastic Opening Tool or the plastic Spudger, disconnect the touch screen cable from the motherboard. Flip up the ZIF connector and move the wire away from the connection point.
- Pull the wire out from its track next to the speaker.

Step 12



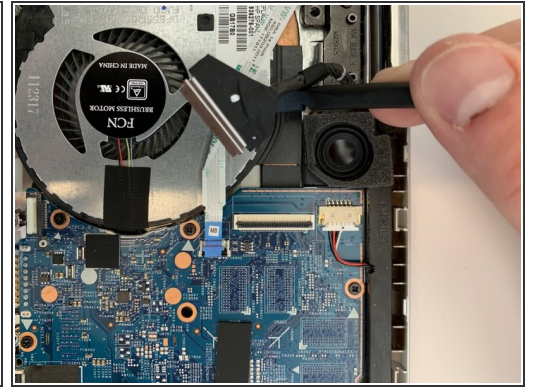
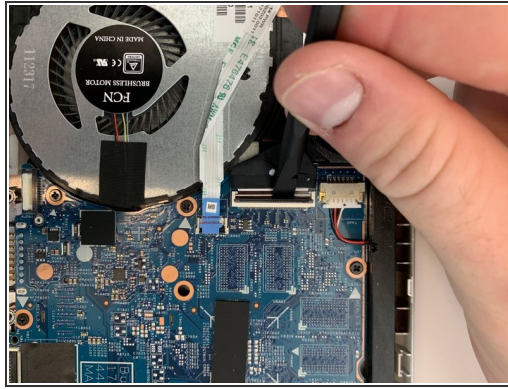
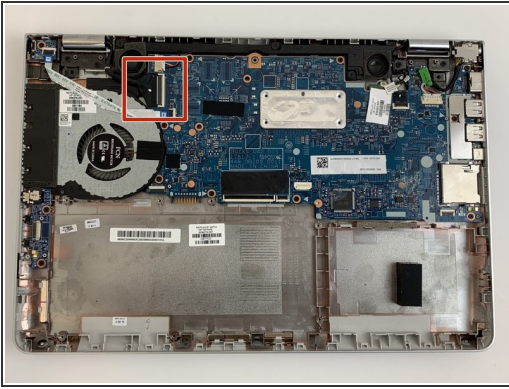
- Use the Blunt Tweezers to disconnect the Wireless Card Antenna Cables. Start with the cable labeled M2, which is connected to Port #2. To disconnect the cable, grab it on both sides with the tweezers and pull up.

Step 13



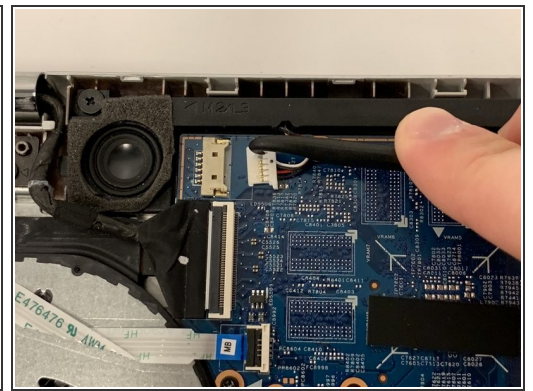
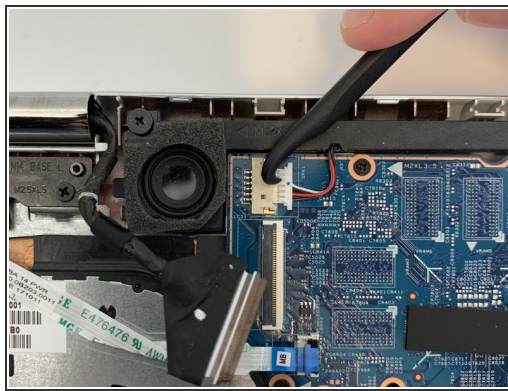
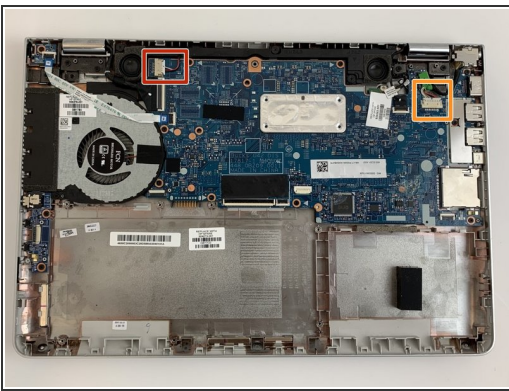
- Use the Blunt Tweezers to disconnect the Antenna Cable labeled A1, which is connected to Port #1. To disconnect the cable, grab it on both sides with the tweezers and pull up.
- Using the Blunt Tweezers, unwind the cables from the track to the right of the speaker. The cables are held in place by two black hooks.

Step 14



- Using the plastic Spudger, remove the ZIF connector that connects the motherboard to the Display Cable. To remove a ZIF connector, use the flat end of the Spudger to flip up the cap on the top. Then the connector should slide out.

Step 15



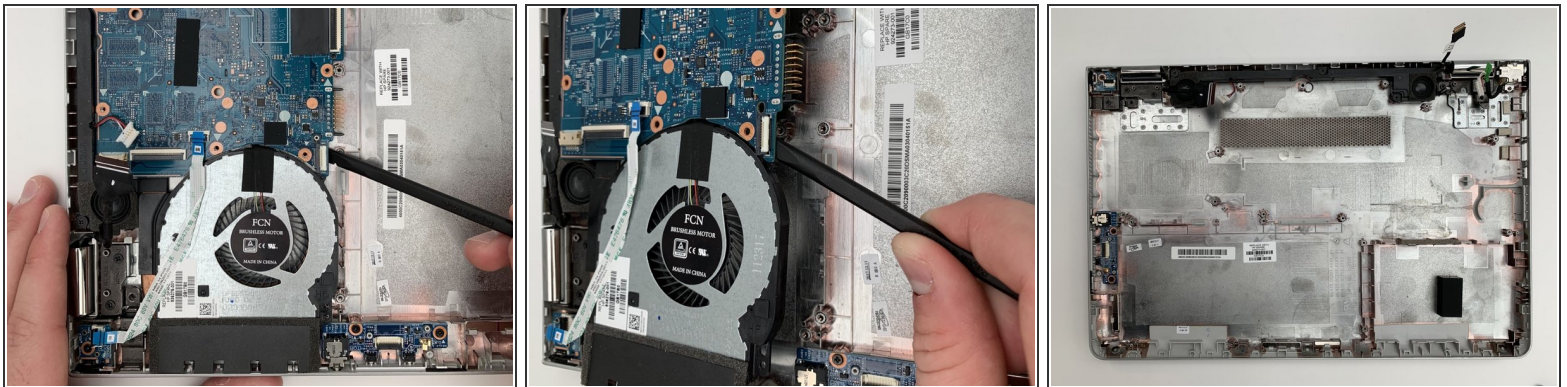
- Using the curved end of the Halberd Spudger, disconnect the Speaker Cable from the port that connects it to the motherboard by prying it out of the port.
- Using the same process to disconnect the DC Power Jack Cable from the port that connects it to the motherboard.

Step 16



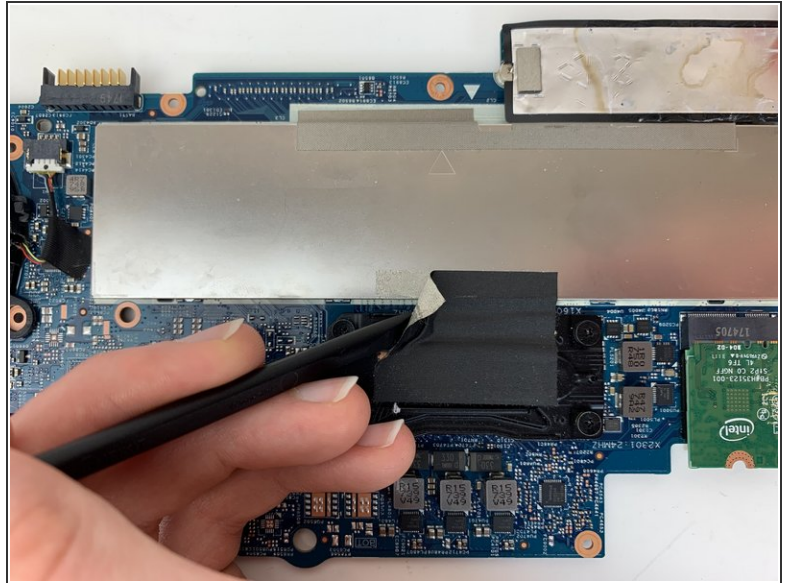
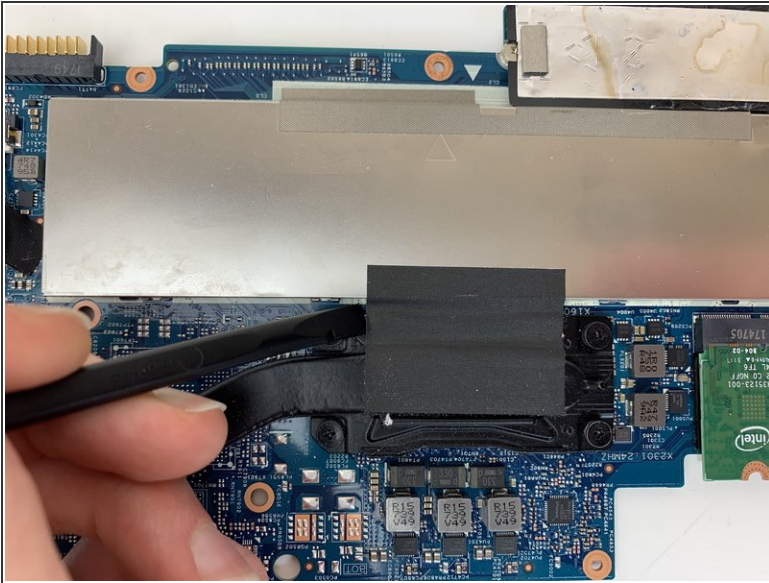
- Using a #1 Phillips-head Screwdriver, remove the ten 5 mm screws that secure the motherboard and fan to the base.
- Using a #1 Phillips-head Screwdriver, remove the singular 2 mm screw that connects the motherboard to the wireless card.

Step 17



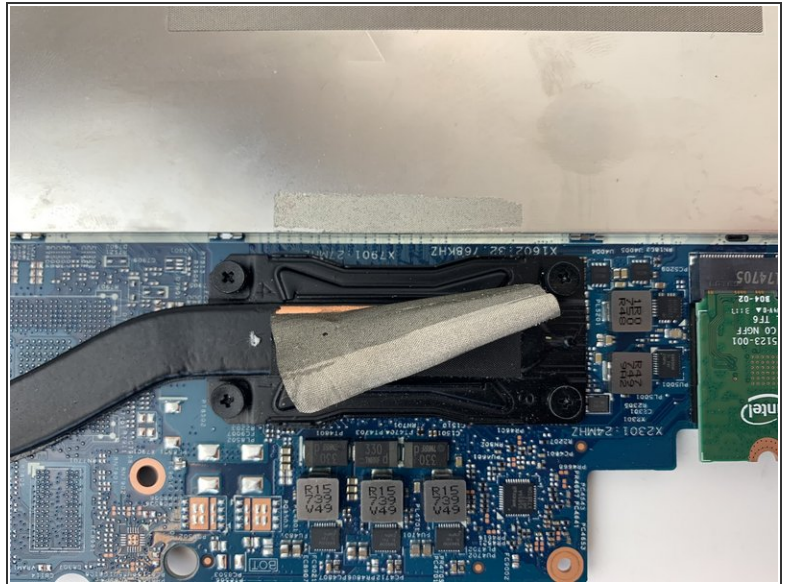
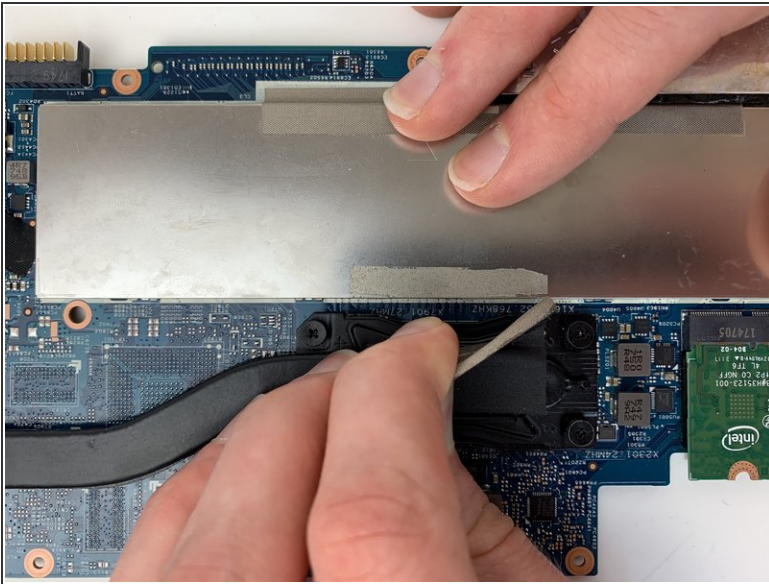
- Using the plastic Spudger, gently lift up on the motherboard from the side that has the fan connected to it and remove the motherboard from the base.
- ⚠ Ensure that all connections to the motherboard have been disconnected. If they are not, the motherboard could be damaged upon removal.

Step 18 — Fan



- Using the flat end of a plastic Spudger, peel back the tape located on the bottom of the motherboard between the heat sink and the motherboard.

Step 19



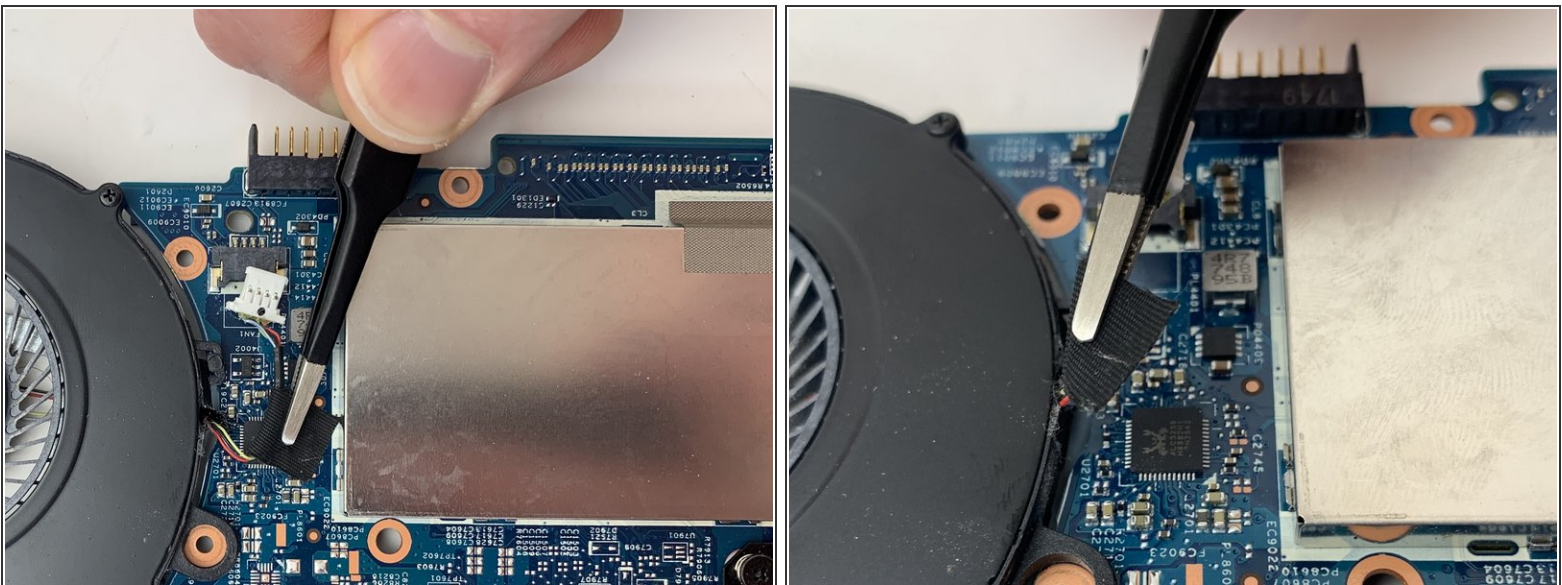
- Once the tape has been peeled up, you can grab it with your hand and finish pulling it back.
- ❗ It is not necessary to completely pull the tape off of the fan assembly. Pull it up enough to separate the fan from the motherboard.

Step 20



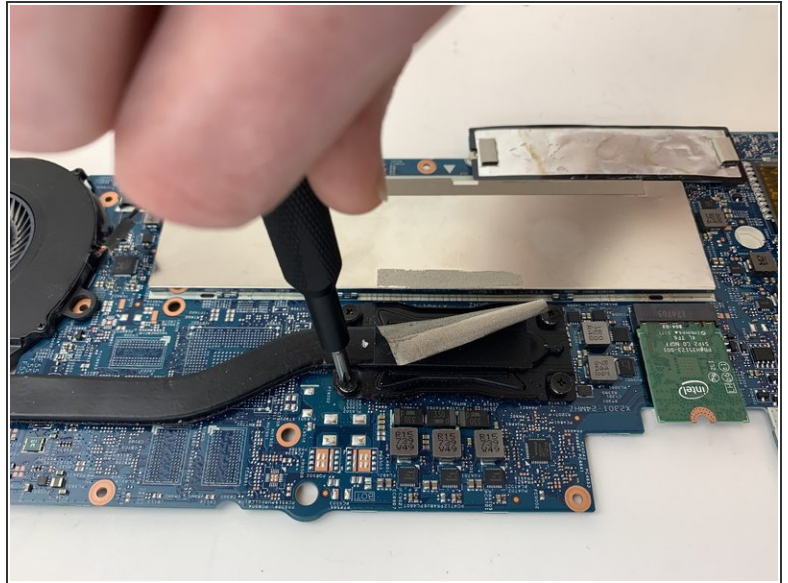
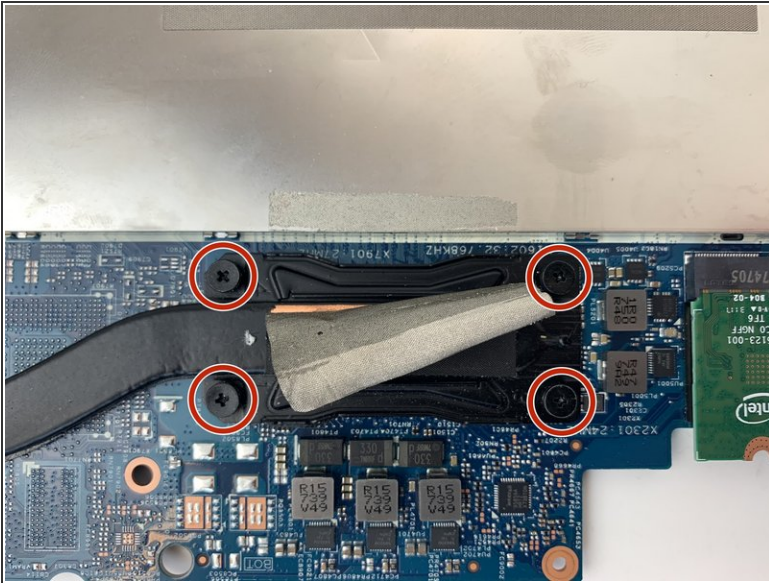
- Using the Metal Tweezers, disconnect the plug connecting the fan to the motherboard.

Step 21



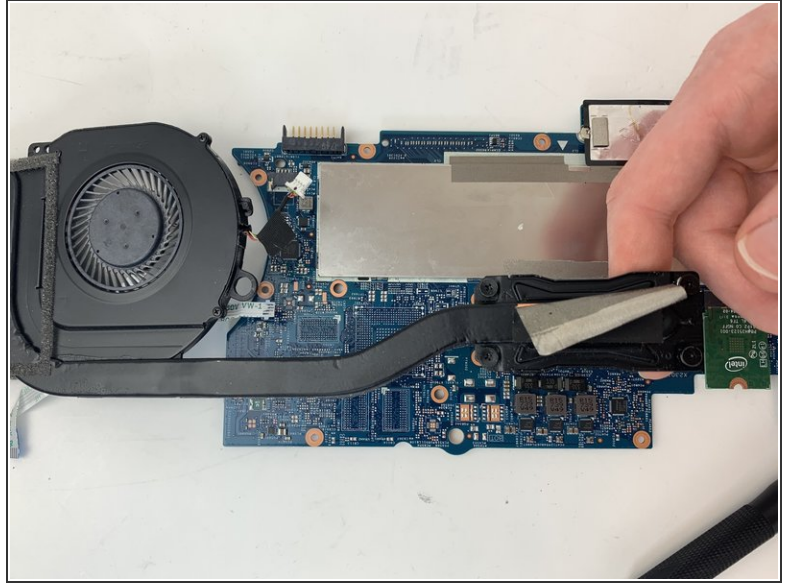
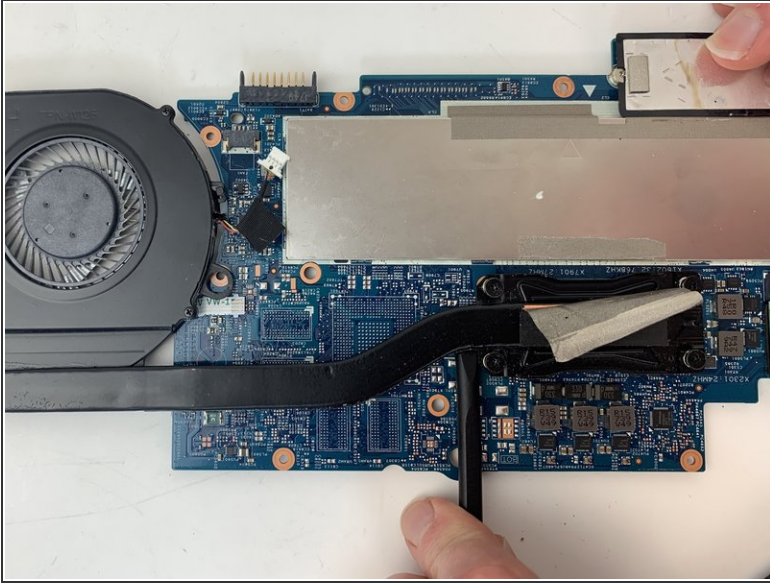
- Using the Metal Tweezers, pull up the tape connecting the fan connector to the motherboard.

Step 22



- Using a #1 Phillips-head Screwdriver, unscrew the four 6 mm screws holding the heat sink (the rectangular block on the end of the fan assembly arm) to the motherboard.
- ⓘ These four screws are held to the fan assembly using washers. You will be able to unscrew them enough to remove the fan, but you will not be able to pull them all the way out of the fan assembly.

Step 23



- Using the flat end of the plastic Spudger, gently separate the fan from the motherboard by prying the fan assembly off the motherboard.
- ☑ There is thermal paste located underneath the heat sink. It is imperative that this thermal paste be replaced in order to maintain good heat transfer after the new fan is installed. [How to Apply Thermal Paste](#)

To reassemble your device, follow these instructions in reverse order.