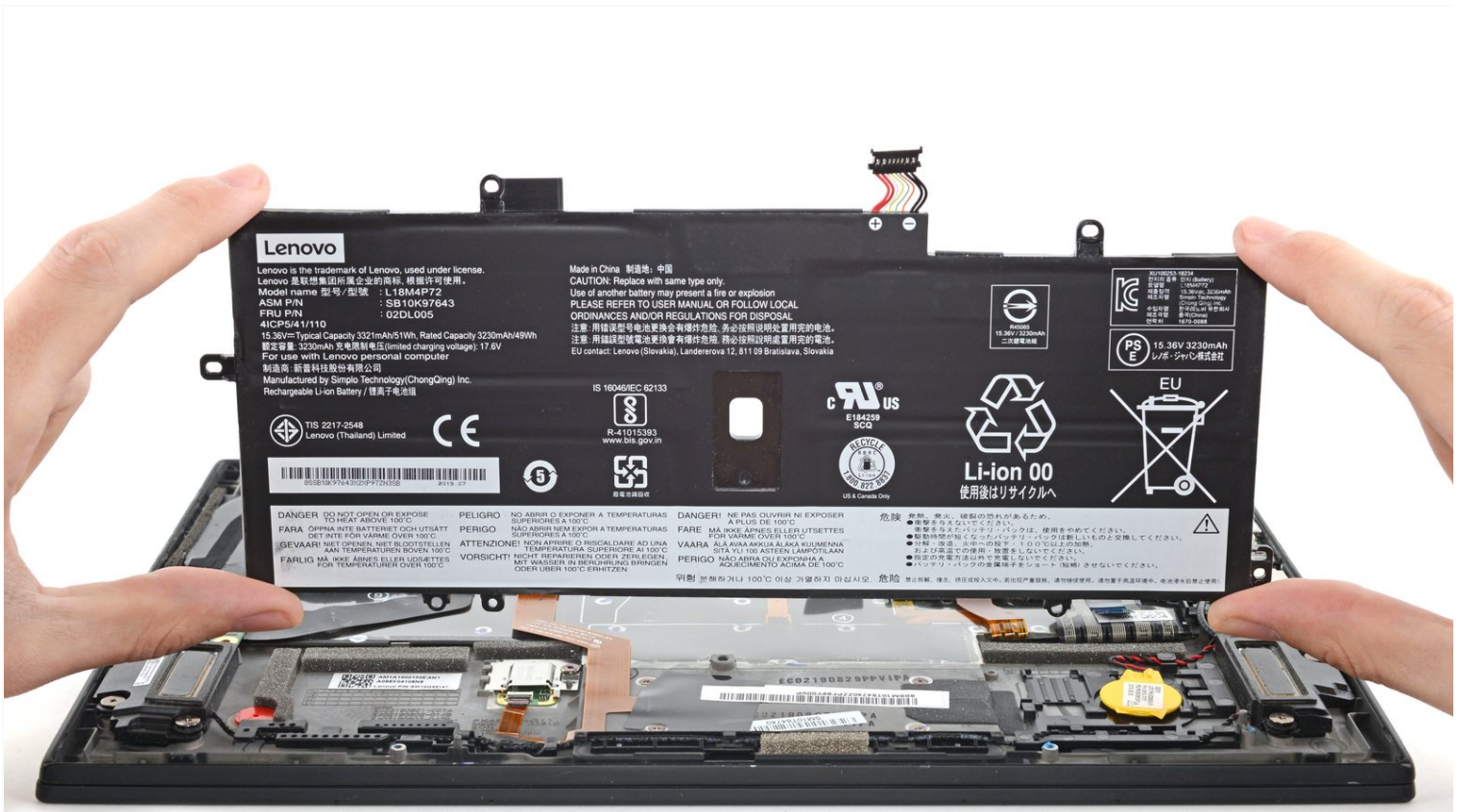




Lenovo ThinkPad X1 Carbon 7th Gen Battery Replacement

Use this guide to replace the battery in your...

Written By: Alex Diaz-Kokaisl



INTRODUCTION

Use this guide to replace the battery in your Lenovo ThinkPad X1 Carbon 7th Gen Laptop.

For your safety, discharge the battery below 25% before disassembling your device. This reduces the risk of fire if the battery is accidentally damaged during the repair. If your battery is swollen, [take appropriate precautions](#).

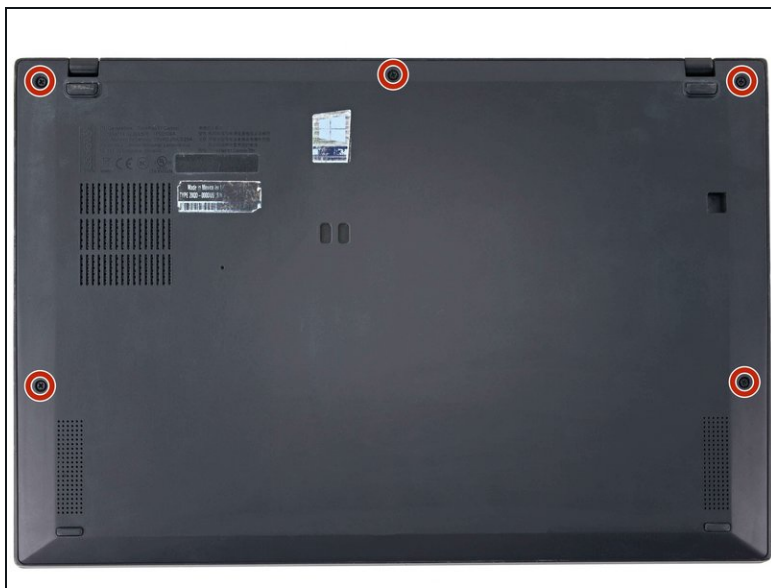
TOOLS:

Spudger (1)
Tweezers (1)
Phillips #1 Screwdriver (1)
Phillips #0 Screwdriver (1)
iFixit Opening Picks (Set of 6) (1)

PARTS:

Lenovo L18C4P71 Battery (1)

Step 1 — Back cover removal



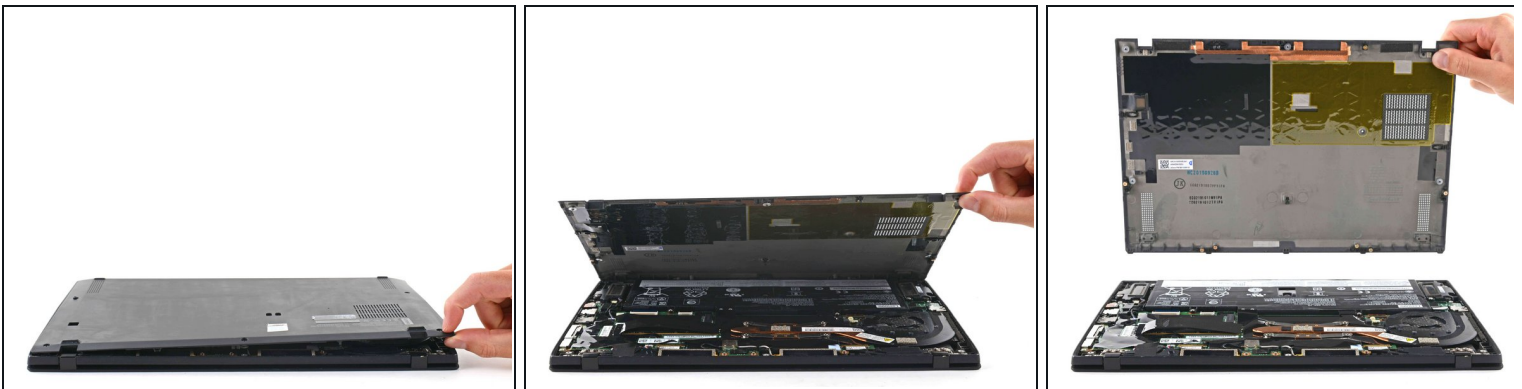
- Use a Phillips #1 screwdriver to loosen the five captive screws securing the back cover.

Step 2 — Insert an opening pick



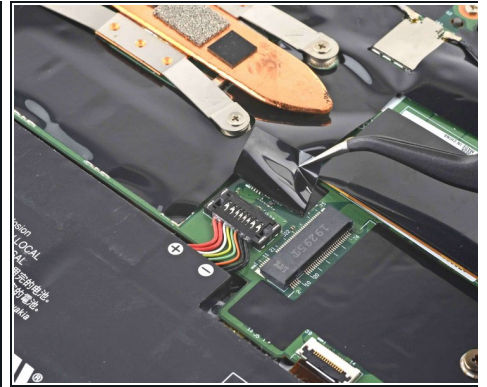
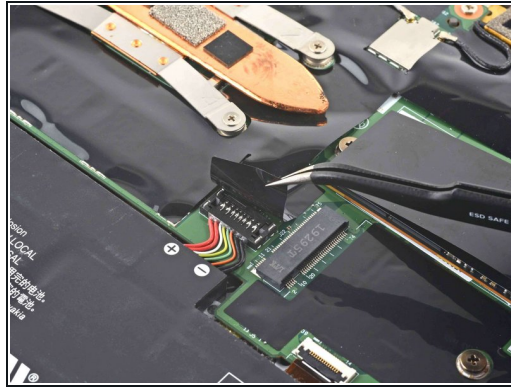
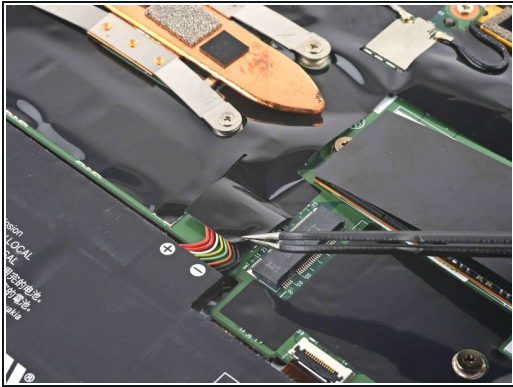
- Insert an opening pick at a 45° angle between the back cover and frame near the rear middle screw.
- Pry up on the pick to release the clips securing the back cover to the frame.
 - ⓘ You will hear several clicks while prying up.

Step 3 — Remove the back cover



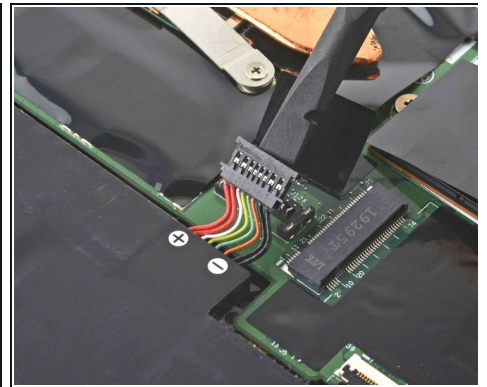
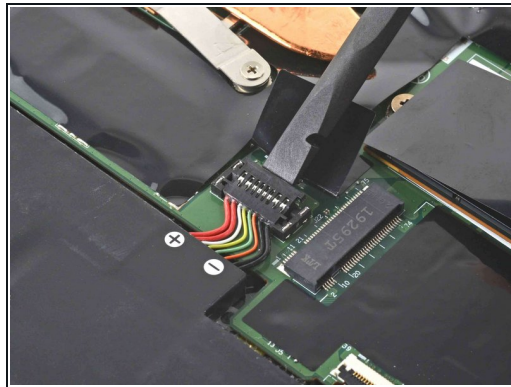
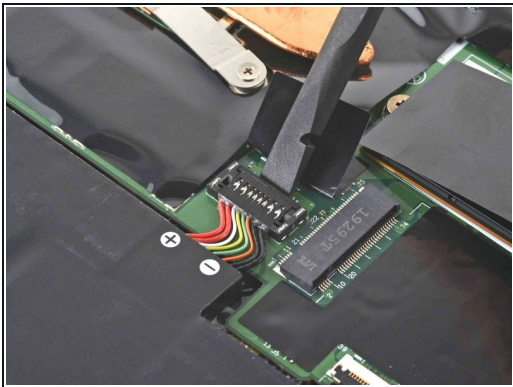
- Lift the back cover up and remove it from the chassis.
 - ⓘ You will hear several clicks while lifting up.
- ☑ During reassembly, this is a good point to power on your laptop and test all functions before sealing it up. Be sure to power your laptop back down before you continue working.

Step 4 — Battery disconnect



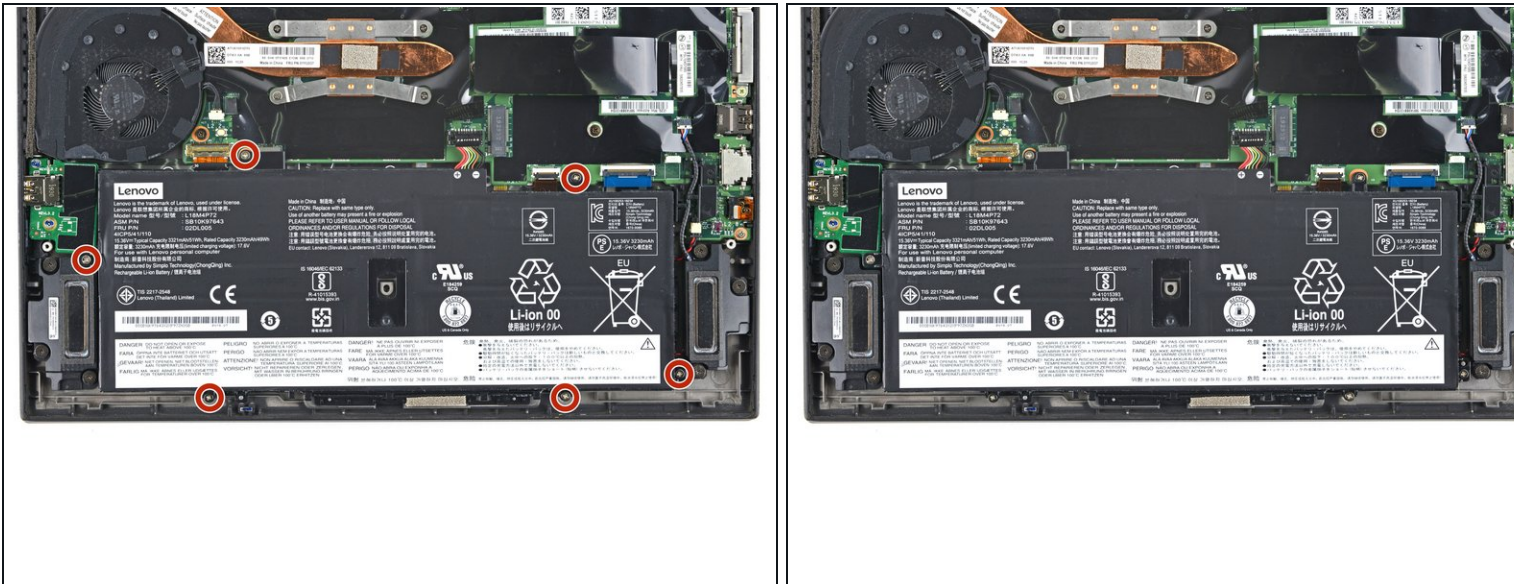
- Use tweezers or your fingers to peel back the plastic shield covering the battery connector.

Step 5 — Disconnect the battery



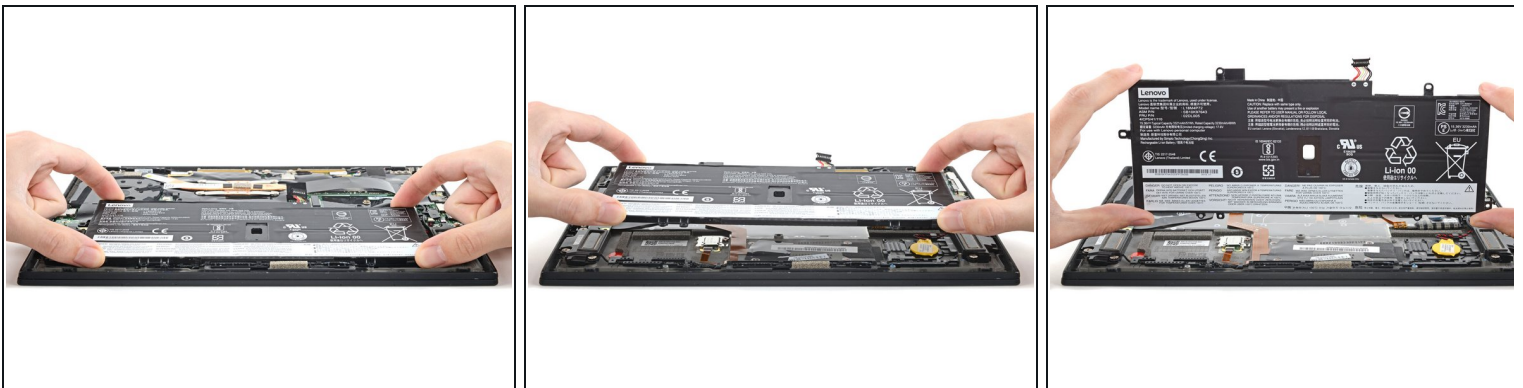
- Use the flat end of a spudger to pry up on and disconnect the battery cable.

Step 6 — Unfasten the battery



- Use a Phillips #0 screwdriver to remove the six 4.9 mm-long screws securing the battery.

Step 7 — Remove the battery



- Lift the battery straight out of its recess and remove it.

To reassemble your device, follow these instructions in reverse order.

For optimal performance, [calibrate your newly installed battery](#) after completing this guide.

Take your e-waste to an [R2 or e-Stewards certified recycler](#).

Repair didn't go as planned? Try some [basic troubleshooting](#), or ask our [Answers community](#) for help.