



HP Envy x360 m6-w105dx Battery Replacement

How to replace the battery in HP Envy m6-w105dx.

Written By: youbin



INTRODUCTION

Bring the life back into your HP Envy m6-w105dx with this guide on how to replace its battery. Replacing the battery is quite easy and will greatly improve your device's ability to hold a charge. If the battery is swollen please [use extreme caution](#).

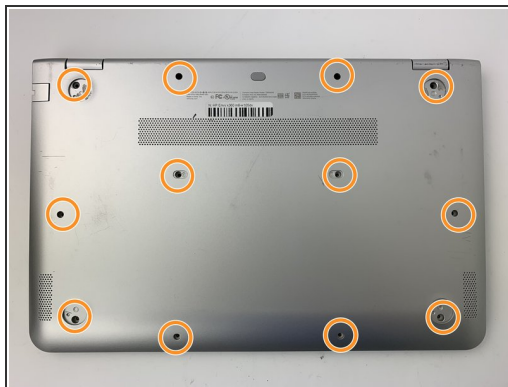
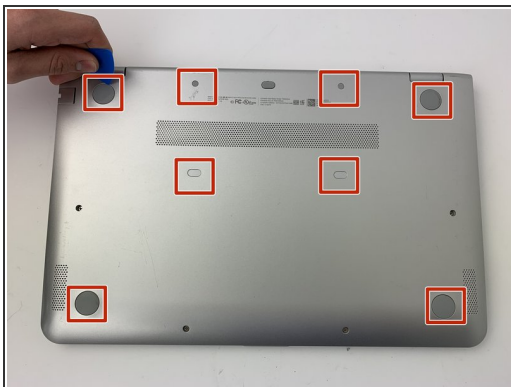
This guide is for the battery replacement of the HP Envy x360 m6-150dx. This will instruct you to remove the front panel assembly in order to access the battery. If you feel comfortable with removing the front assembly, you can go directly to the battery removal steps.

Please ensure that the battery is completely dead and the computer is not plugged in. If there is any power stored in the battery, it could cause bodily harm while being worked on. Please also ensure that there is no heat radiating from the device as this could also inflict harm while being worked on.

TOOLS:

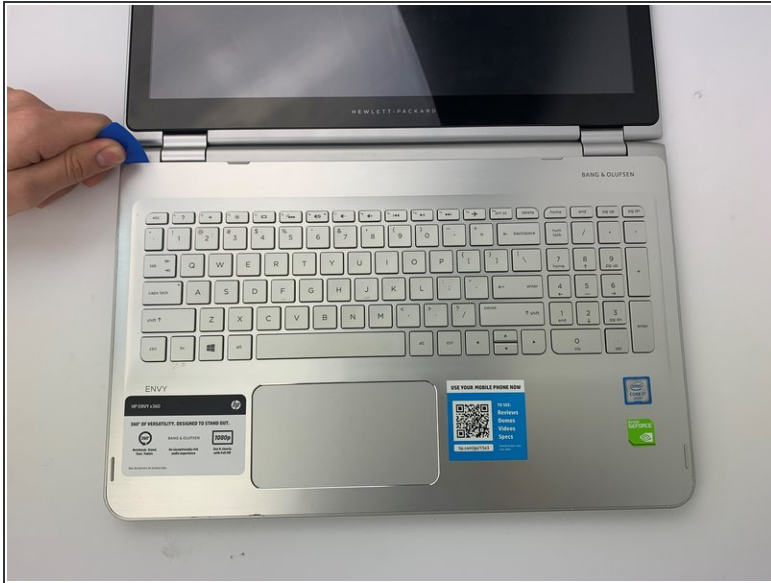
- [Phillips #1 Screwdriver](#) (1)
 - [iFixit Opening Picks set of 6](#) (1)
 - [iFixit Opening Tools](#) (1)
-

Step 1 — Keyboard




- ✦ Make sure the laptop is powered off and disconnected from any outlets.
- Use the opening pick to lift up the eight rubber grips on the underside of the device.
- With the #1 Phillips screwdriver, remove the twelve 6mm screws from the back case.

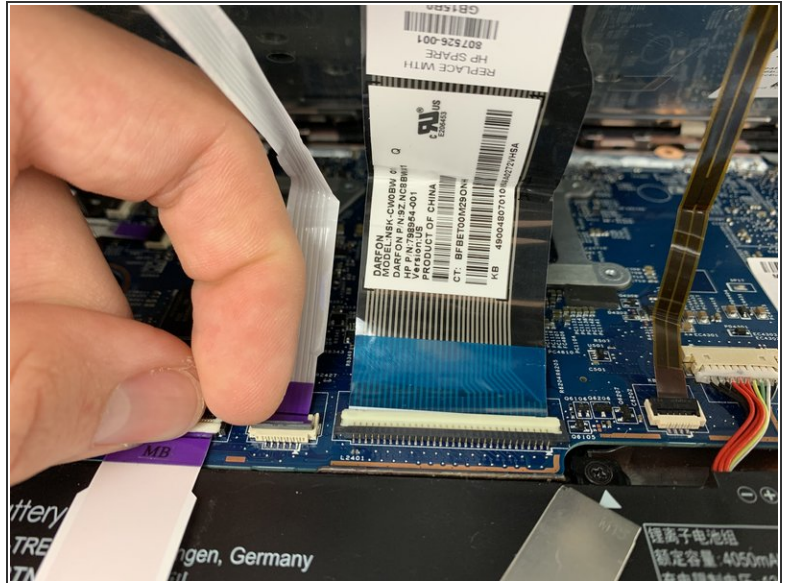
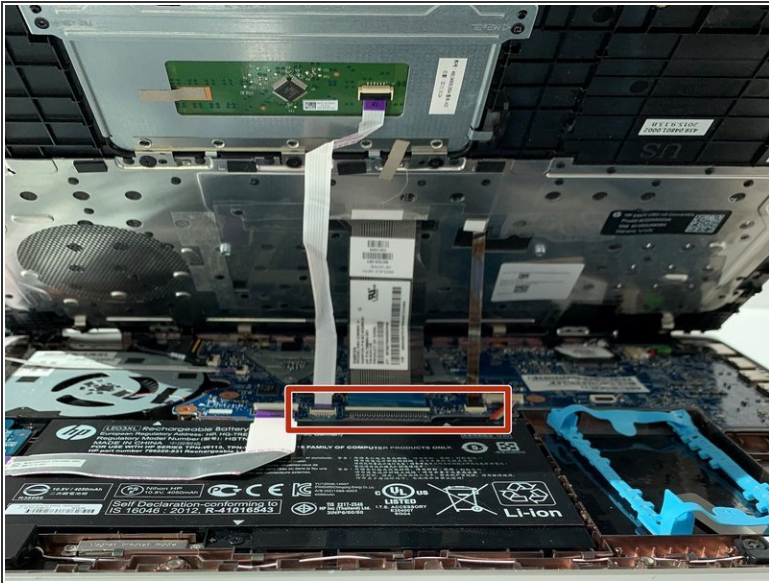
Step 2



- Open the laptop and turn to the keyboard.
- Gently insert an opening pick into the edge of the keyboard panel, and slide around the keyboard lining until the clips have all been disengaged.
- Lift the keyboard panel from the bottom and carefully start to lift up.

 There are ribbon cables still connected on the under side of the the keyboard. Do not pull the keyboard away from the device.

Step 3



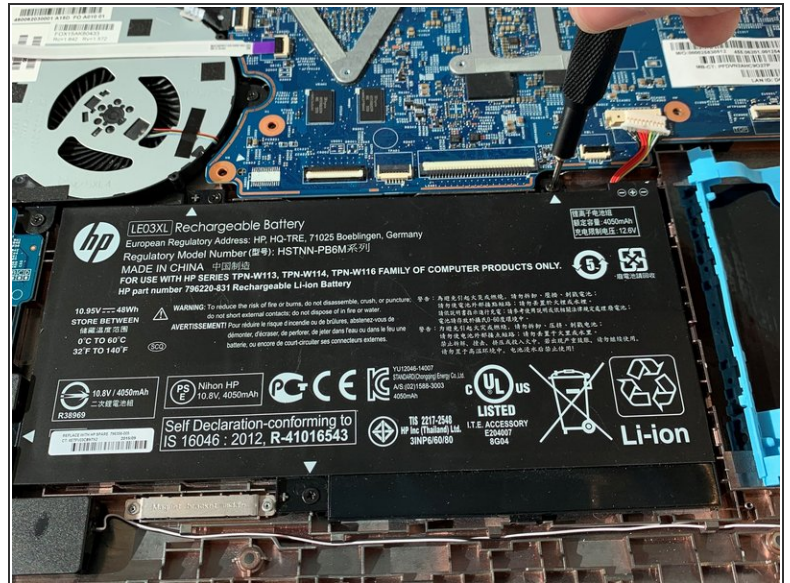
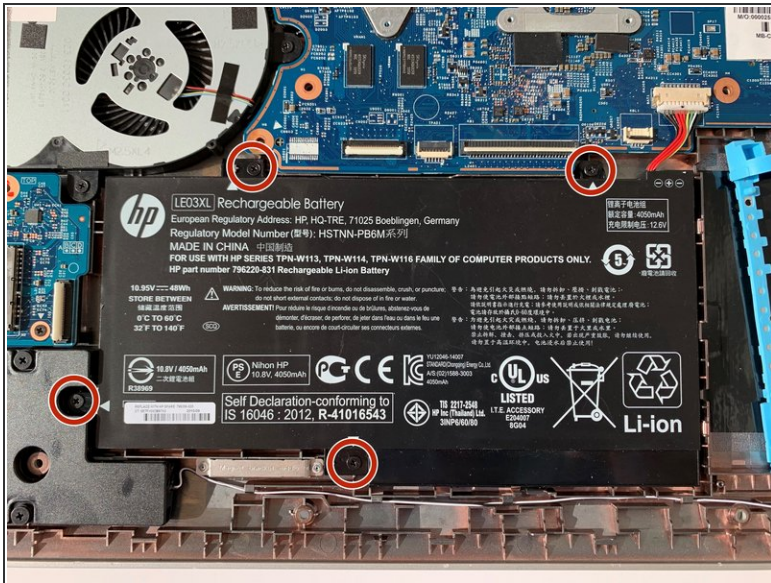
- Gently lift the keyboard up from the bottom.
- Carefully open the locking flap of the three ZIF connectors and detach the three ribbon cables from the motherboard using your fingers.
- ⚠ Do not remove the ZIF connectors by pulling on the wires, instead detach them by gently flipping up the plastic tabs located at the ends of the wiring.
- Fully remove the keyboard from the laptop and install your new keyboard.

Step 4 — Battery



- Carefully flip up the locking tabs on the ZIF connectors and remove the ribbon cables from the connectors.
- Disconnect the battery cable by sliding it downward from the connector with an iFixit opening tool.
- ① Using this tool reduces the chance of any sparking or electronic charge.

Step 5



- Using the Phillips #1 screwdriver, unscrew the four 6 mm screws.

Step 6



- Gently lift the battery up from the case and replace it.

To reassemble your device, follow these instructions in reverse order.