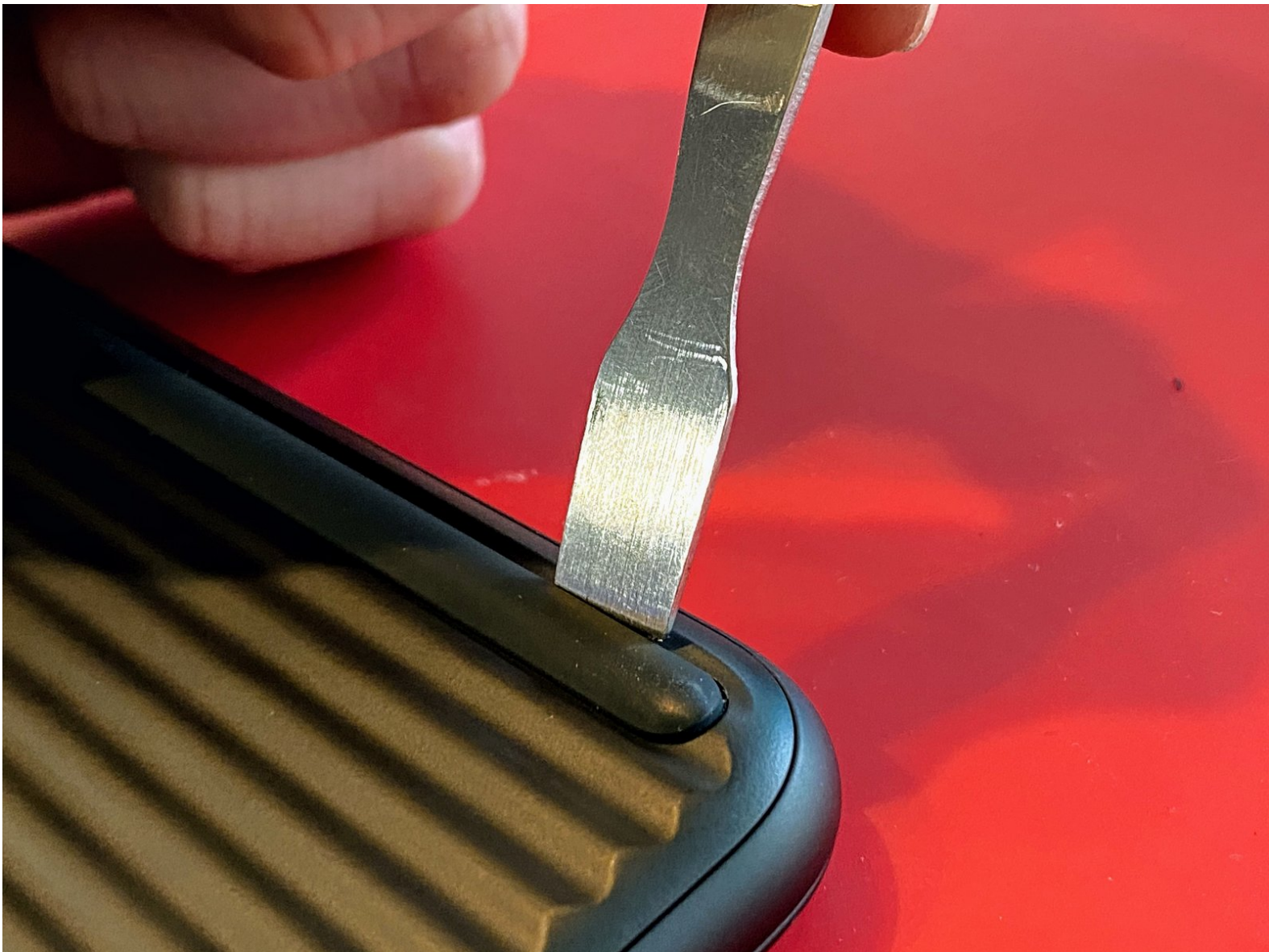




# Google Pixelbook Go Base Removal

Basic guide to removal of base and battery, and proper reattachment.

Written By: The Computer Cellar

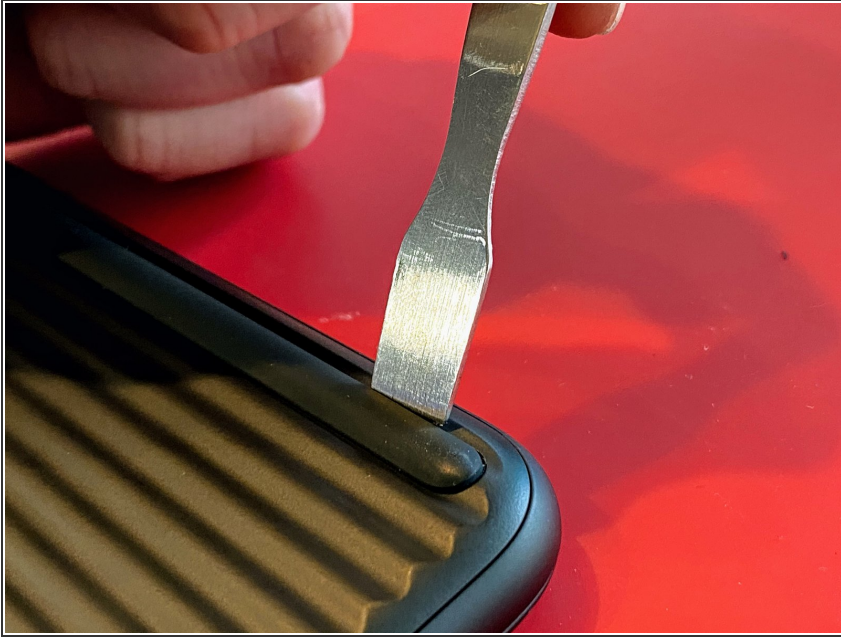




## TOOLS:

- [T5 Torx Screwdriver](#) (1)
  - [T2 Torx Screwdriver](#) (1)
  - [Metal Spudger](#) (1)
-

## Step 1 — Google Pixelbook Go Base Removal



- Use a metal spudger to gently lift up one corner of the rubber strips on the base. The strips are actually composed partially of hard plastic and will not stretch or deform, and should easily pop off with only gentle tugging.

## Step 2



- The adhesive on the strips doesn't feel very tacky after removal, so you may want to add a layer of 3M 9448A "double-coated tissue tape" to hold them on securely.

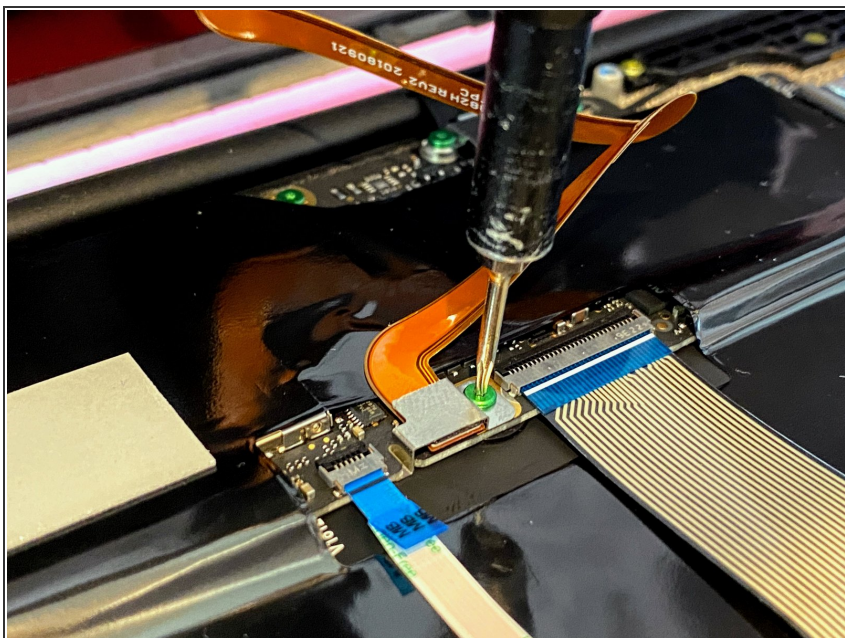


## Step 3



- Now you can remove the ten T5 screws from the base. Keep track of the two screws from the centre front (by the touchpad) - they're ever so slightly shorter than the rest!

## Step 4



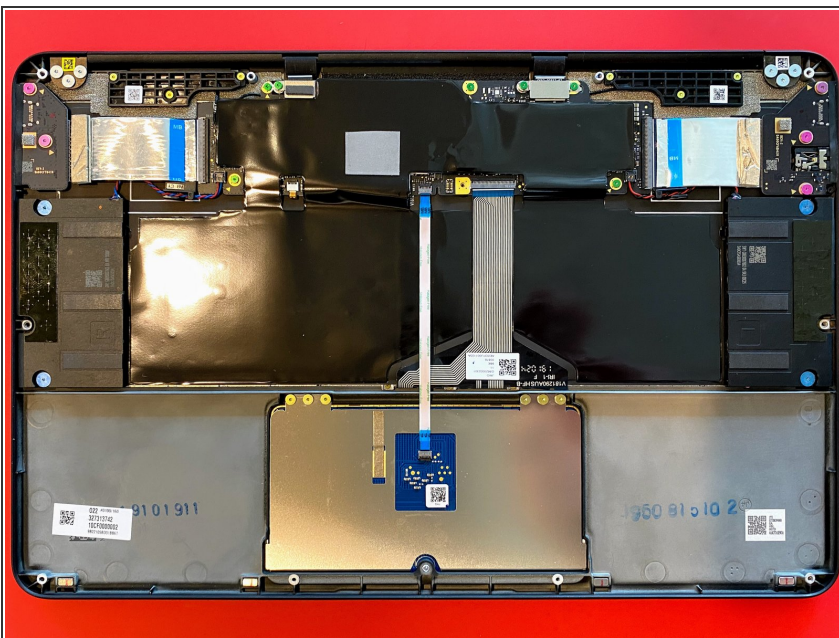
- Lift the base off gently but don't pull too far - the battery is glued to the baseplate and the cable is screwed down to the motherboard! Use a T2 bit to remove the green screw and lift off the metal clasp, then unfasten the press-in battery connector.

## Step 5



- The inside of the baseplate with the glued-on battery and cable. No other components are attached to the baseplate.

## Step 6



- Inside the unit. There are two connectors from motherboard to display which use MacBook-style ribbons. The motherboard is very small, attaching to two daughterboards for the USB-C ports and headphone jack. The speakers are quite large (the black rectangles centre left and right).

Quite easy to pop off in to time at all, and easy to reassemble - just make sure you put screws back in the right places!