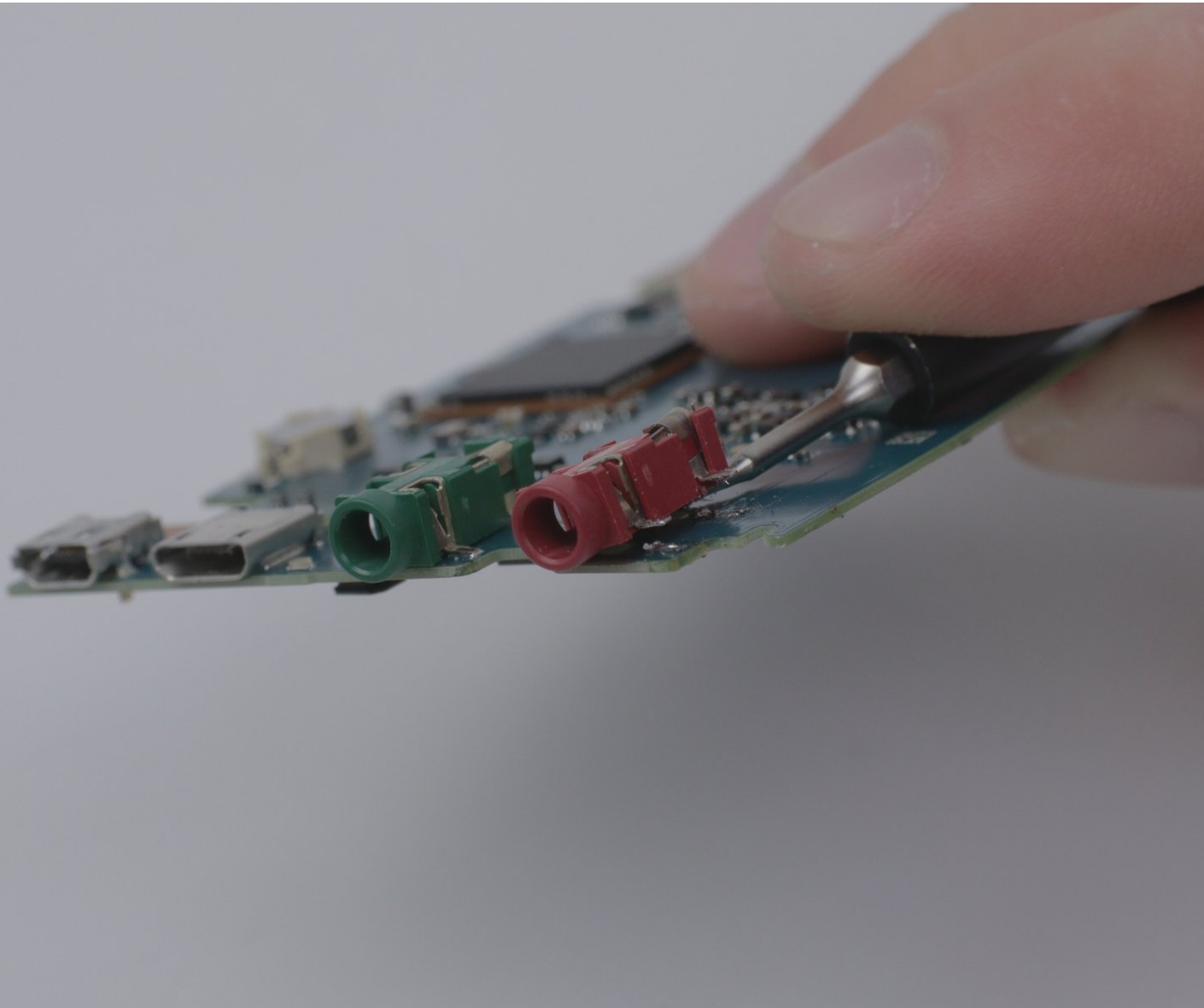




Sony a7 AV Port Replacement

This replacement guide will address how to...

Written By: Jeffrey Coleman



INTRODUCTION

This replacement guide will address how to remove a damaged AV port from a Sony a7 model number ILCE-7 camera. The AV port is the centralized hub of all inputs and outputs for the camera. This step by step guide will provide the actions necessary to repair a faulty AV port.

If the camera is having difficulty connecting to an external device such as a computer or is unable to transfer photos and other files to an external storage platform then there is a possibility that the AV port is damaged. Before beginning this process, it may be helpful to reference this [troubleshooting page](#), which could help with addressing issues before having to go through the tedious process of repairing the AV port. The special skill of soldering connectors will be required at certain points, a guide on how to do this can be found [here](#).

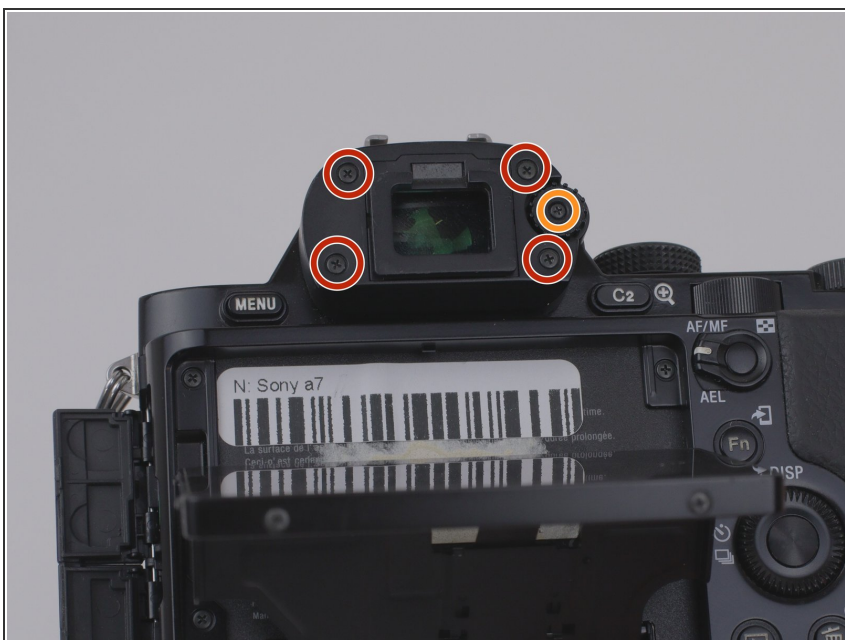
Caution: It would be in the best interest of continuity to ensure that all files from the camera have been transferred and backed up. This replacement guide will require accessing the AV port and motherboard, which places the camera's storage processes at risk of being damaged. If damage is incurred, there is a possibility that photos on the camera's storage could be lost.



TOOLS:

- [Phillips #00 Screwdriver](#) (1)
 - [Tweezers](#) (1)
 - [6-in-1 Screwdriver](#) (1)
 - [Lead-Free Solder](#) (1)
 - [Soldering Iron](#) (1)
-

Step 1 — Rear Disassembly



- Remove the eyepiece cover by removing the four M1.5x4mm screws with a PH00 Phillips screwdriver.
- Remove the M1.5x4mm screw that retains the adjustment wheel with a PH00 Phillips screwdriver.

Step 2



- Remove the six M1.5x4mm screws with a PH00 Phillips screwdriver.

Step 3



- Remove one M1.5x4mm screw with a PH00 Phillips screwdriver.

Step 4



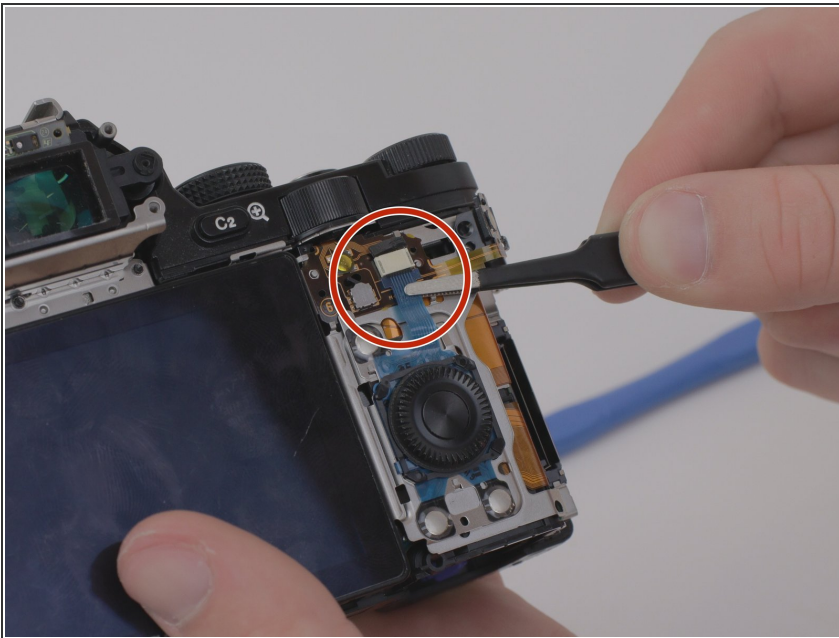
- Remove the four M 1.5x2mm screws.

Step 5



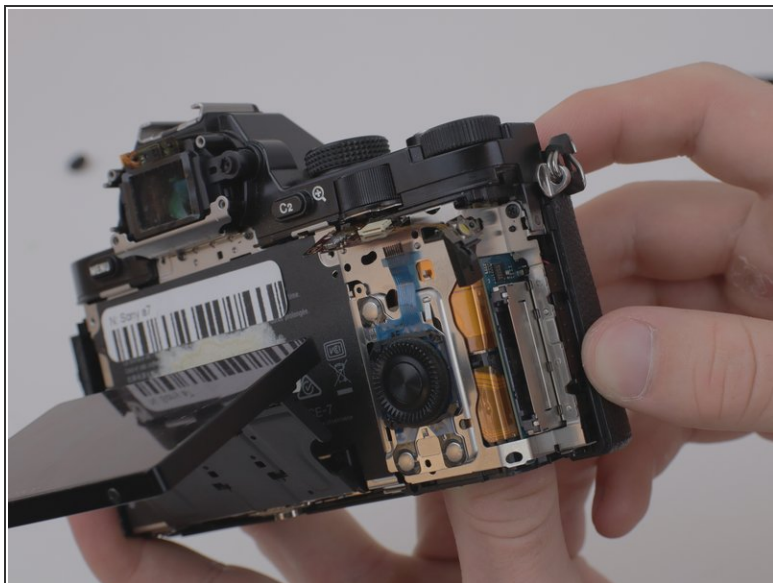
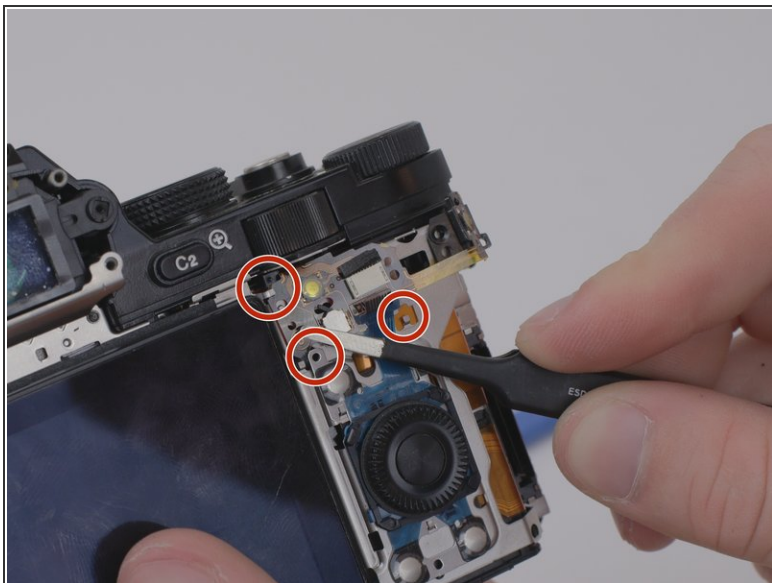
- Once the screws have been removed, unsnap and lift the rear plastic cover off of the camera.

Step 6



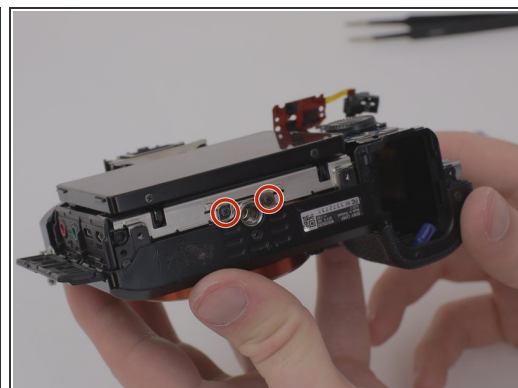
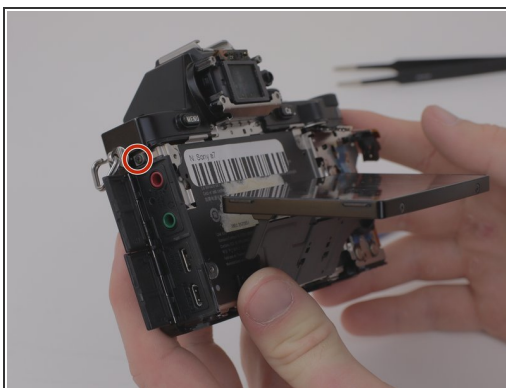
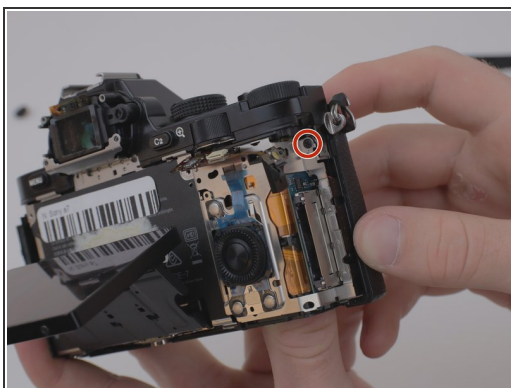
- Using the blunt tweezers, remove the blue ribbon cable.
- ⓘ For additional guidance and tips on how to properly attach and detach connector cables, please reference *iFixit's* guide to connector cables [here](#).

Step 7



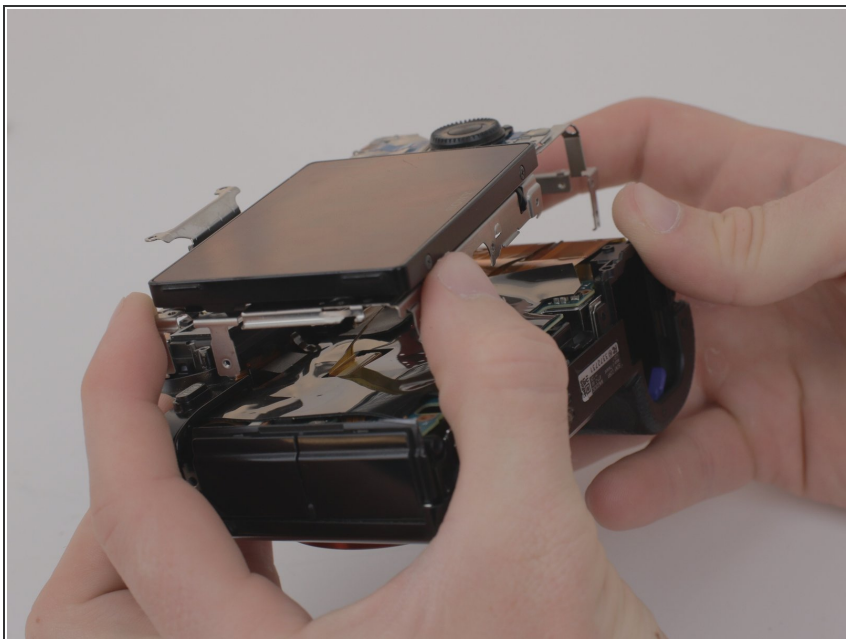
- Place the tweezers on the side of the circuit board and lift it from underneath so as to free it from the three retaining tabs.

Step 8



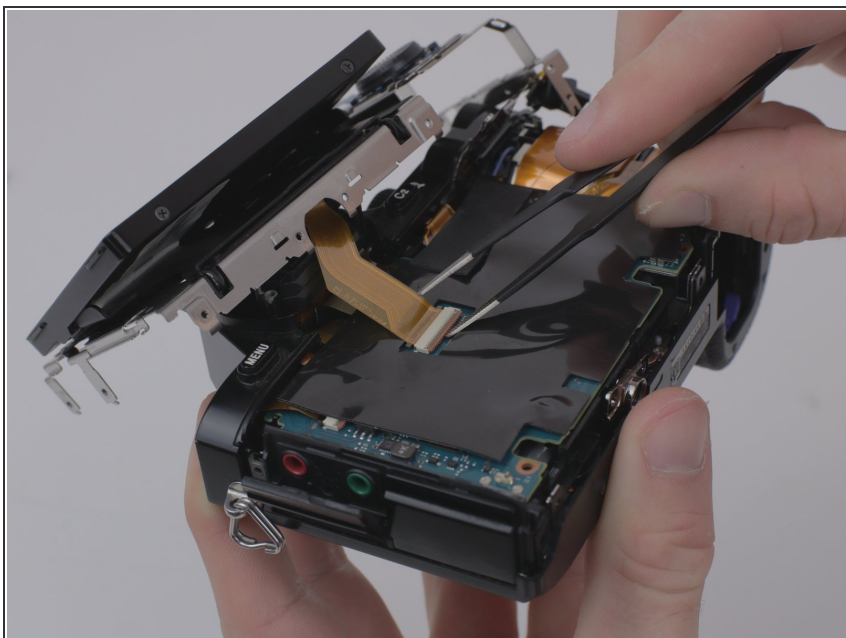
- Remove four M1.5x4mm screws using a PH00 Phillips screwdriver.

Step 9



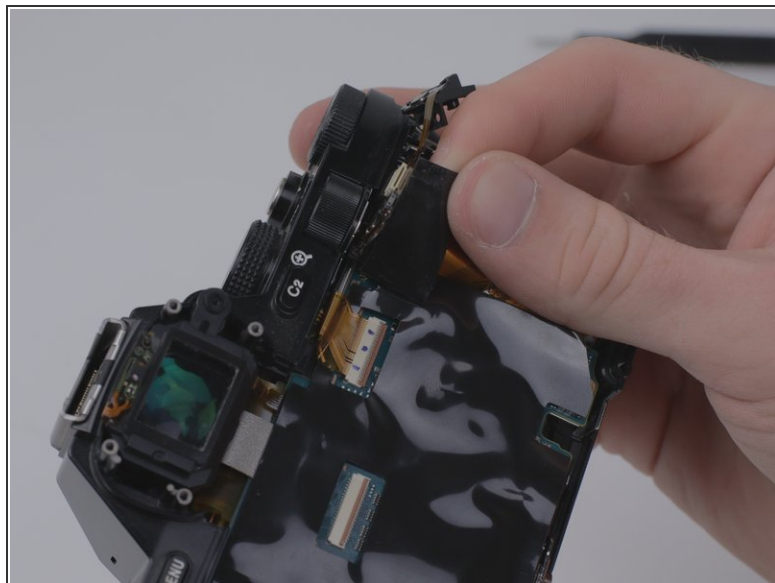
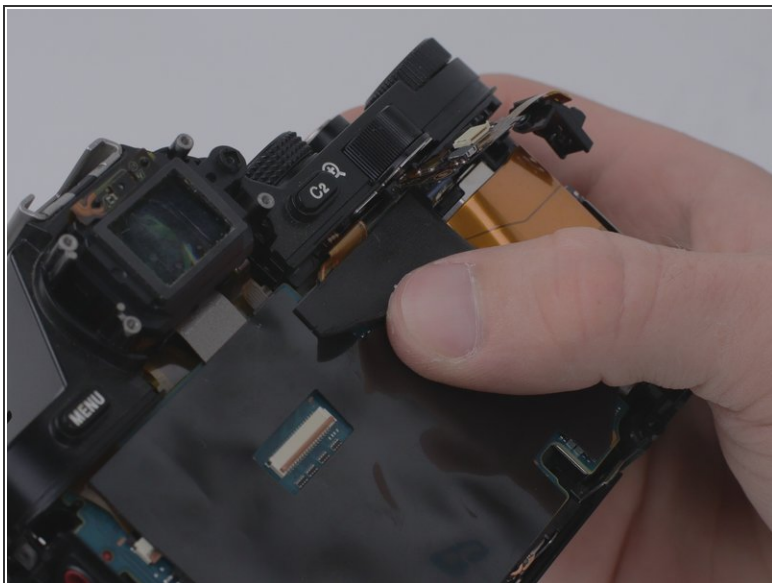
- Lift the metal plate and LCD screen away from the camera body.

Step 10



- Detach the amber ribbon cable from the motherboard.
- ① For additional guidance and tips on how to properly attach and detach connector cables, please reference *iFixit's* guide to connector cables [here](#).

Step 11 — Motherboard



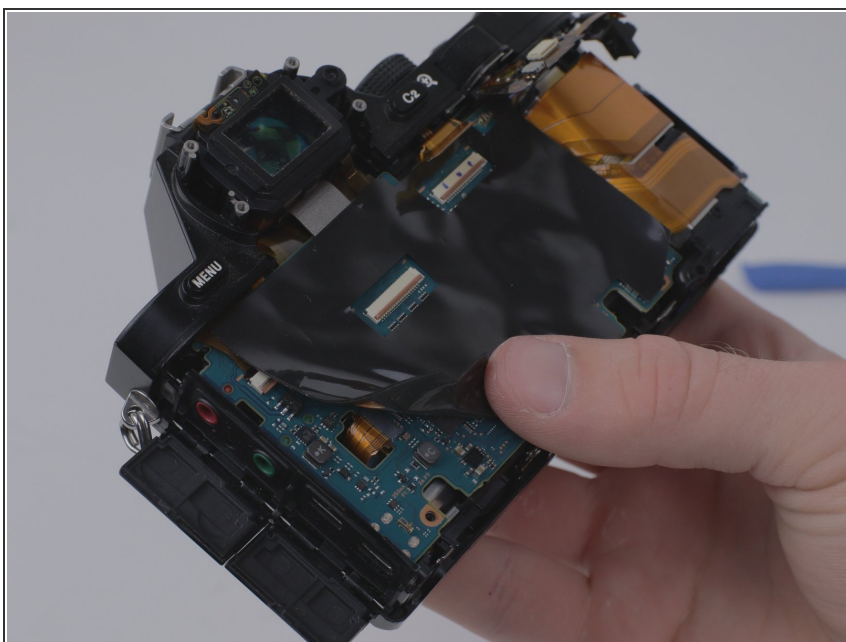
- Peel off the small adhesive tape located on the top right side of the motherboard.

Step 12



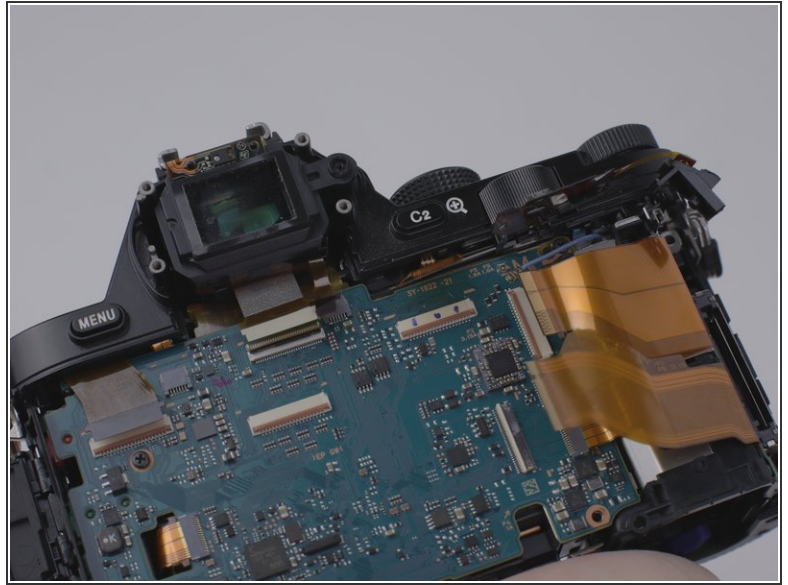
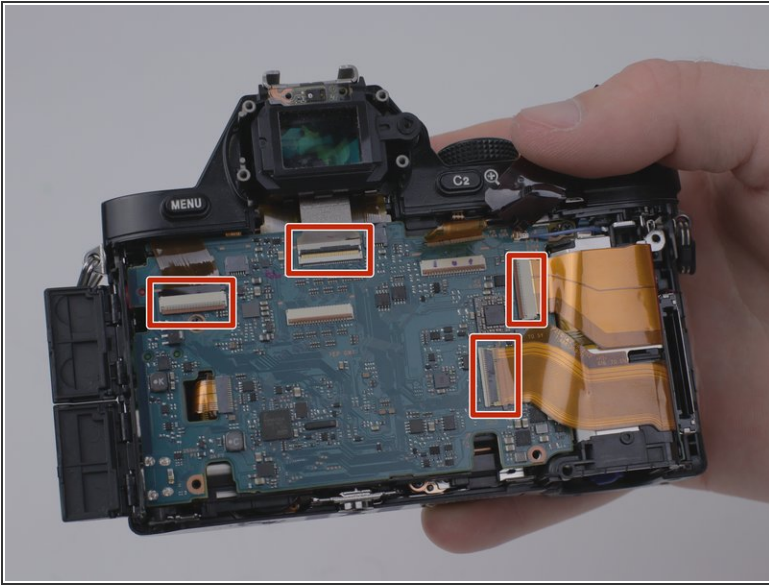
- Remove the exposed ribbon cable by using the iFixit opening tools
- ❗ For additional guidance and tips on how to properly attach and detach connector cables, please reference *iFixit's* guide to connector cables [here](#).

Step 13



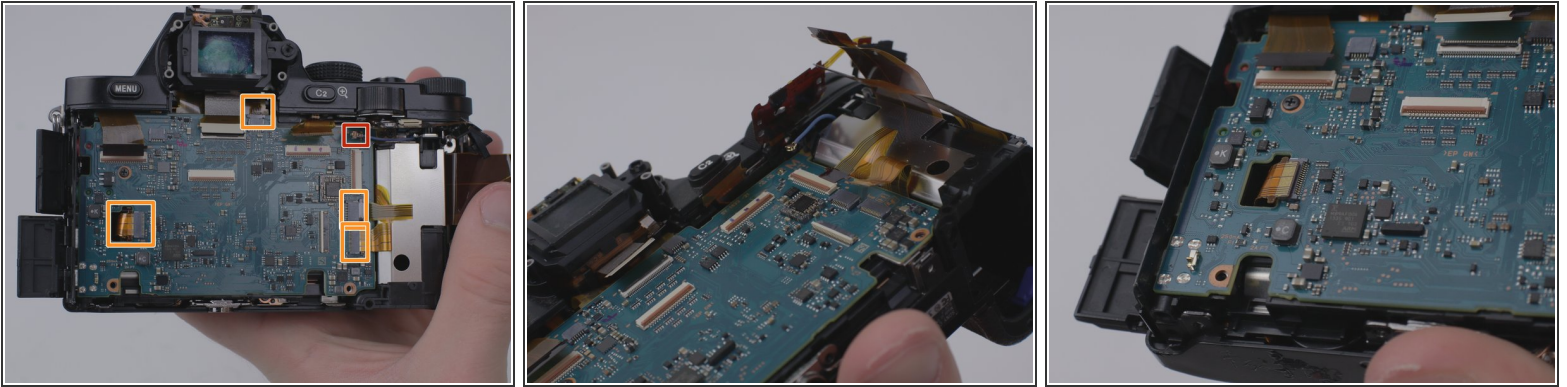
- Peel off the large black protective adhesive from the motherboard.

Step 14



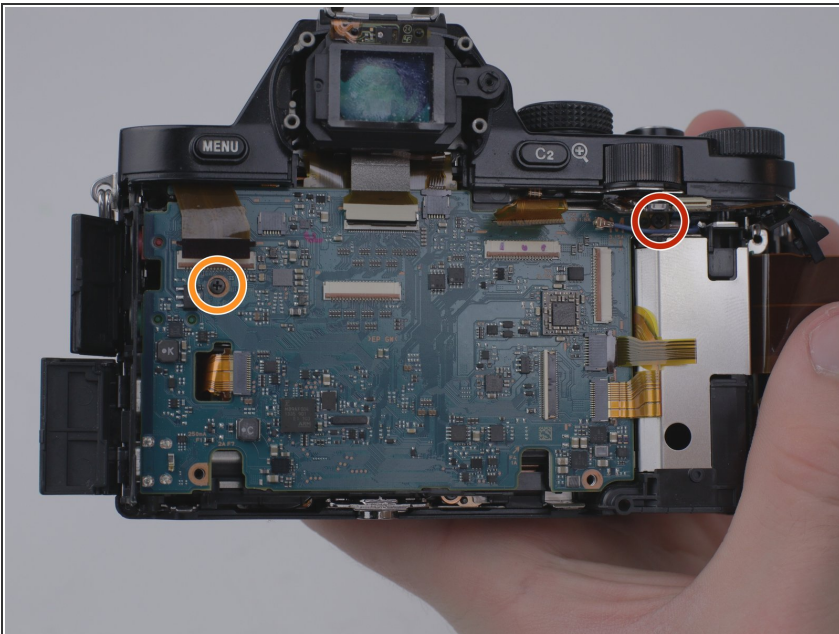
- Remove the four visible ribbon cables by using the spudger.
- ⓘ Removing the ribbon cables will require lifting a lever located on the connector in order to pull out the cable.
- ⓘ For additional guidance and tips on how to properly attach and detach connector cables, please reference *iFixit's* guide to connector cables [here](#).

Step 15



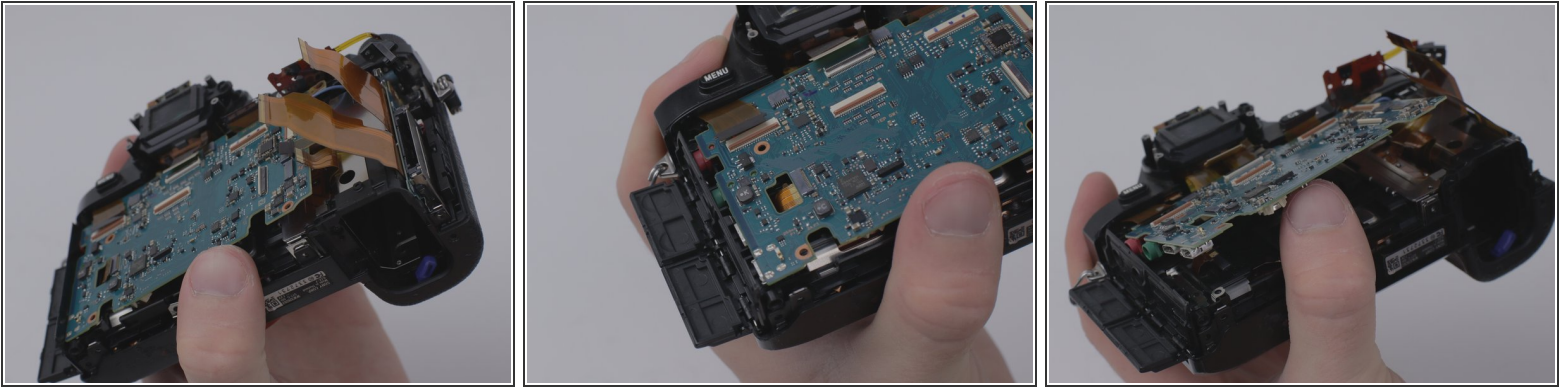
- Remove the one U.FL plug by using the spudger.
 - Using the spudger, remove the four remaining ribbon cables.
- i** These ribbon cables do not have the requirement to lift a lever on the connector as specified in previous steps.
- For additional guidance and tips on how to properly attach and detach connector cables, please reference *iFixit's* guide to connector cables [here](#).

Step 16



- Remove one M1.5x2mm screw with a PH00 Phillips screwdriver.
- Remove one coarse threaded 5mm screw with a PH00 Phillips screwdriver.

Step 17

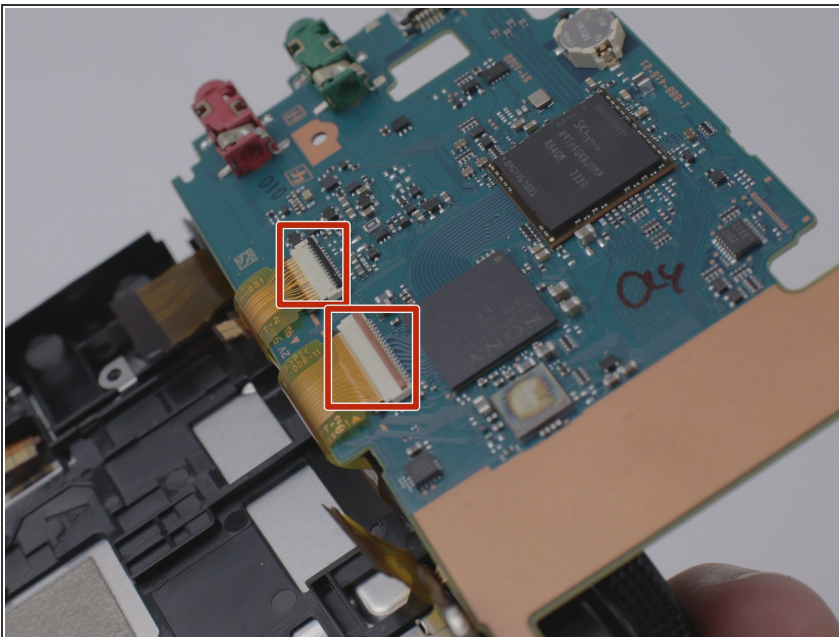


- Lift the motherboard from the camera body.

i It helps to pick up the right side of the board first, and then work sequentially down the board. Be sure to gently ease the motherboard from its clips down the remainder of the side.

! Exercise extreme caution when removing the motherboard as it can be fragile, and damage to it could mean the camera will become unrecoverable.

Step 18

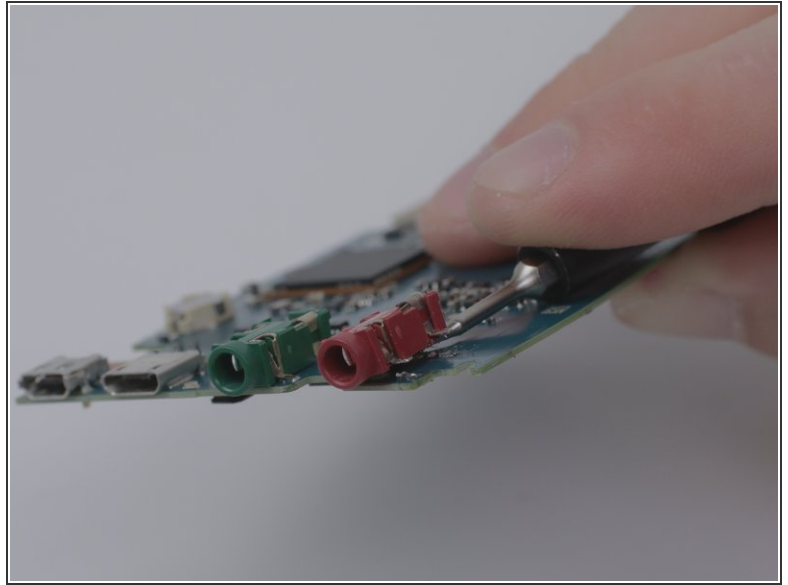
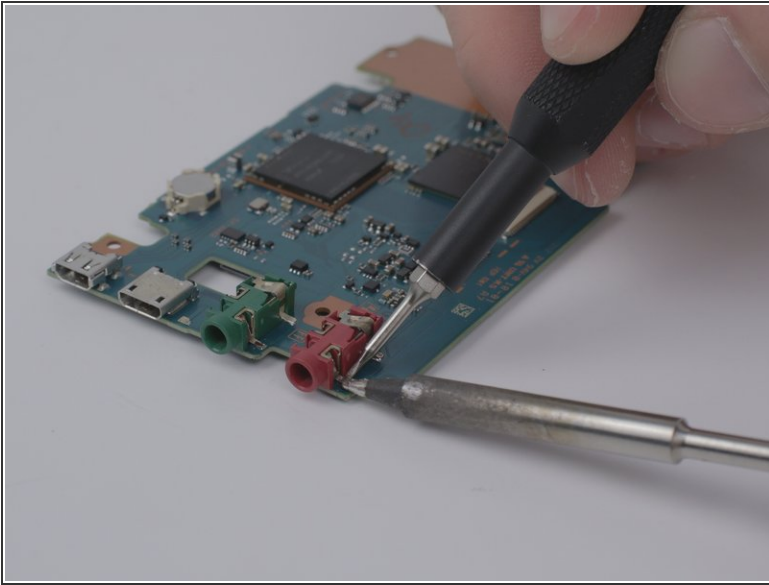


- Remove the two visible ribbon cables by using the forceps.

i Removing the ribbon cables will require lifting a lever located on the connector in order to pull out the cable.

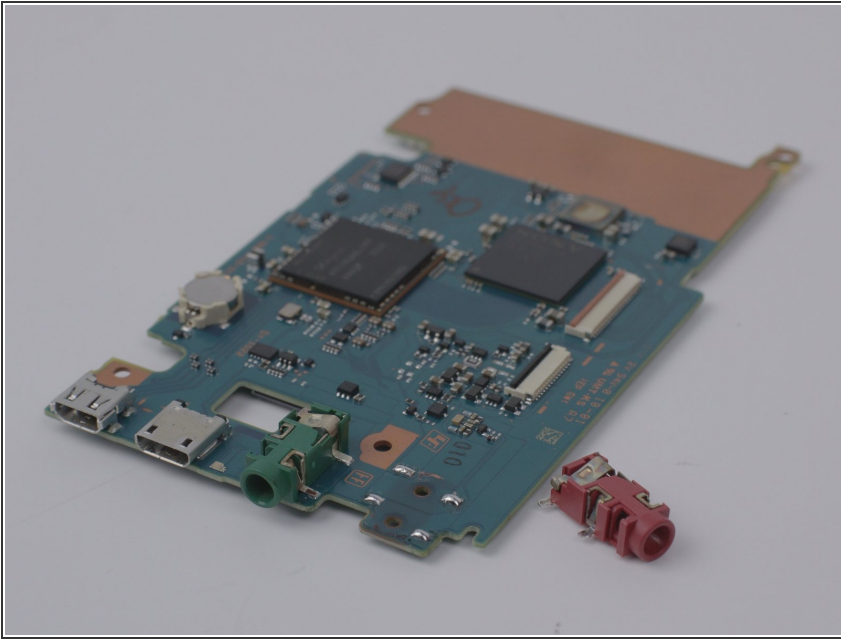
i For additional guidance and tips on how to properly attach and detach connector cables, please reference *iFixit's* guide to connector cables [here](#).

Step 19 — AV Port



- Take a soldering iron and place it onto a leg of the failed AV port.
 - Use a small flat head screwdriver to pry up each leg while the solder is molten.
- ⚠ The soldering iron and solder will be hot, exercise extreme caution when handling.
- ⚠ Always wear eye protection when soldering connections, solder can splatter and cause burns.
- ⚠ Do not inhale any smoke or fumes that may be given off during the soldering process, as they can be toxic.
- ℹ For help and tips on how to effectively solder like a professional, please reference the *iFixit* guide on soldering [here](#).

Step 20



- Repeat the actions in the previous step to the remaining three legs of the faulty AV port until the connector is able to be moved, and is free.
- ☑ All of the tips and cautions about the soldering process still apply in this step, continue to exercise extreme due diligence and caution.

To reassemble your device, follow these instructions in reverse order.