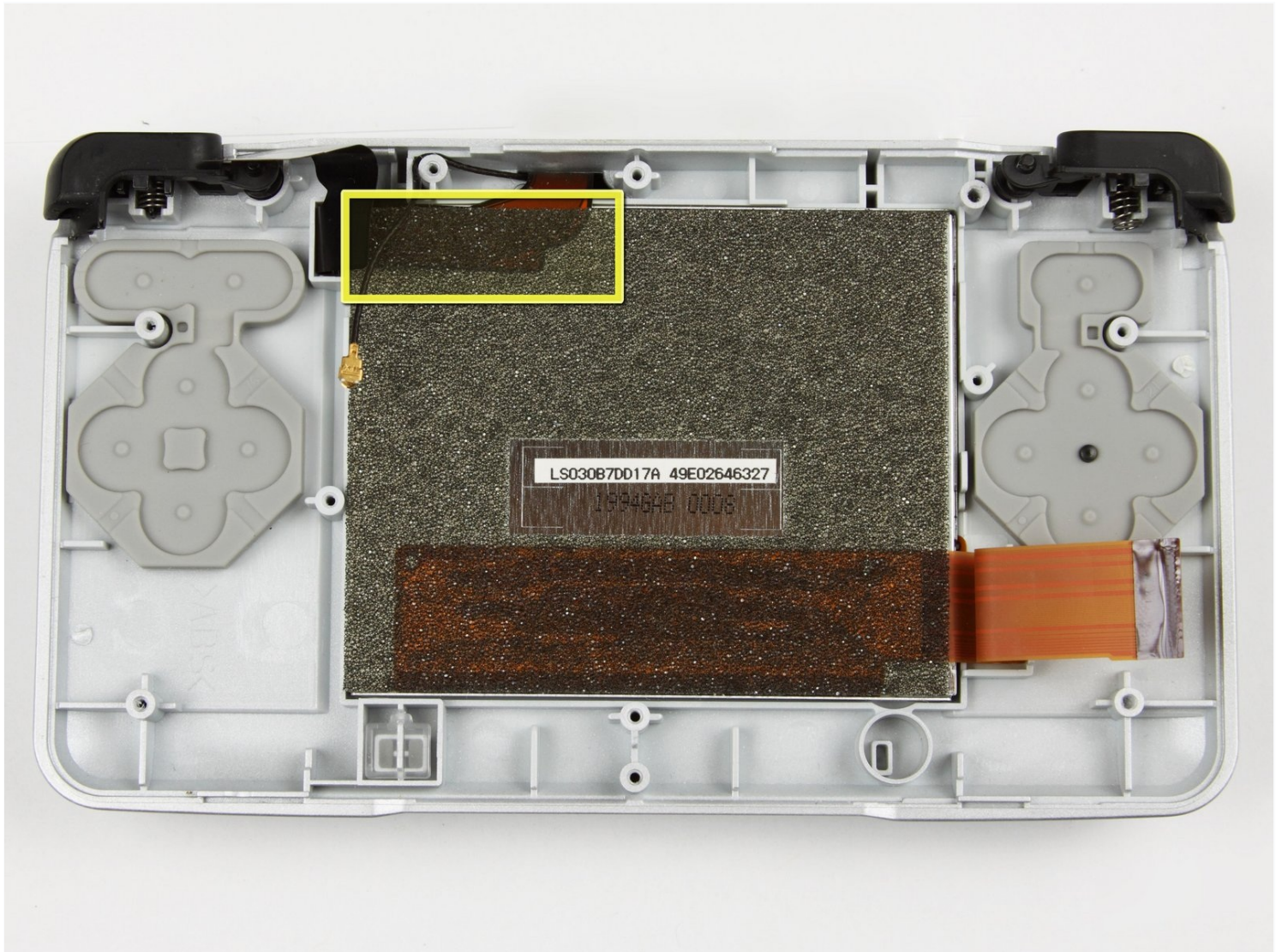




Nintendo DS Bottom LCD Screen Replacement

After removing the circuit board, the bottom...

Written By: dnguye26



INTRODUCTION

After removing the circuit board, the bottom LCD screen can easily be removed from the Nintendo DS.

TOOLS:

[iFixit Opening Tool](#) (1)

[Spudger](#) (1)

[Phillips #00 Screwdriver](#) (1)

[Tri-point Y1 Screwdriver](#) (1)

[Tweezers](#) (1)

Step 1 — Battery



- Remove the cartridge from the console.
 - Use a Phillips #00 Screwdriver to remove the screw securing the battery door to the rear case.
 - Remove the battery door.
- ⓘ In the images, it shows that the fixer is using a flathead screwdriver. This flathead screwdriver will work just like the Phillips #00 Screwdriver.

Step 2



- Use a plastic opening tool or spudger to pry out the battery from the bottom. If a plastic opening tool or spudger isn't available, your fingernails may work.

Step 3



- Remove the battery from the Nintendo DS.

Step 4 — Back Panel



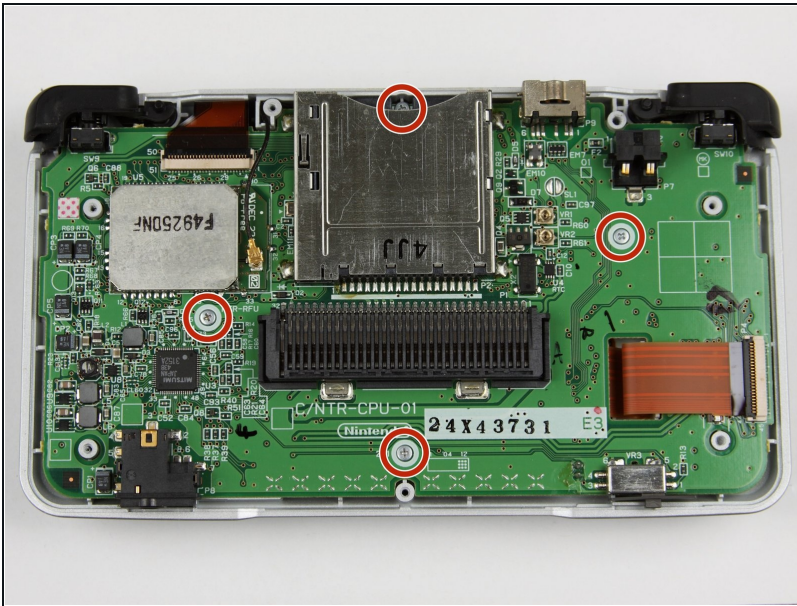
- Remove the seven 6.4mm Y00 screws located on the back.
- ⓘ If your DS has a lanyard attached to it, you can remove it to make the process of opening the top-left screw easier.

Step 5



- With your hands, pry the back panel off the main case.
- Separate the back from the front, and set it aside.

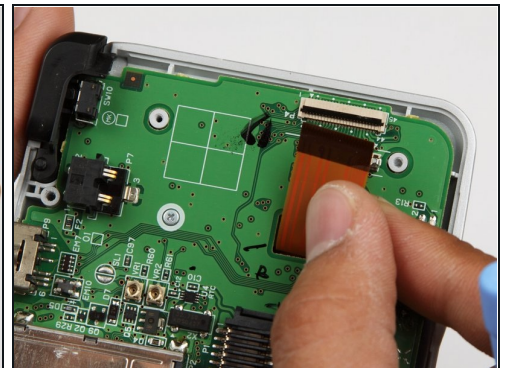
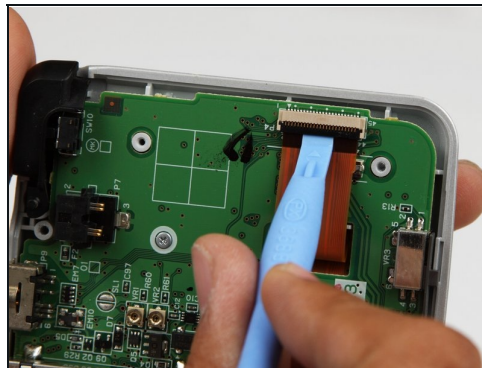
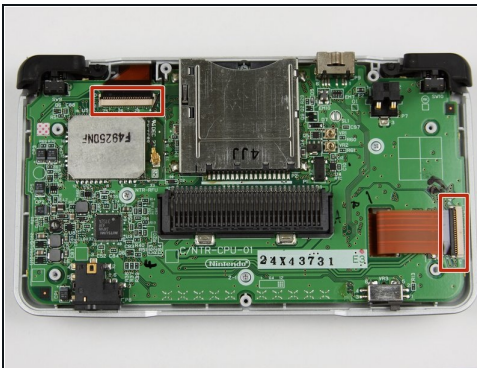
Step 6 — Motherboard replacement.



- Using a Phillips #00 screwdriver, remove the four screws on the circuit board.

⚠ Be careful NOT to slip with the screwdriver, you can damage the circuit board!

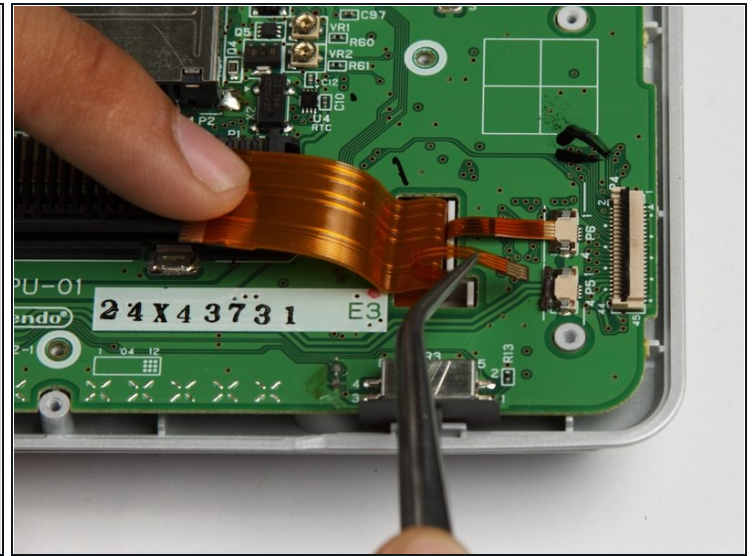
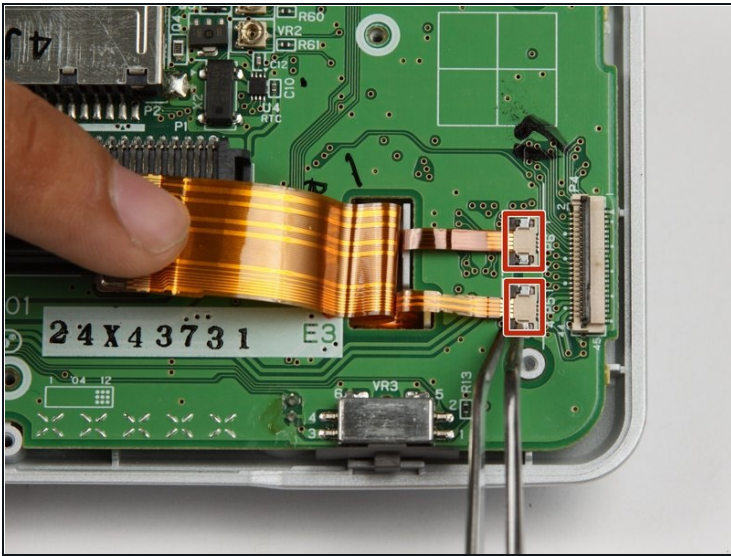
Step 7



- Unlock the two large ribbon cables by moving the black clip up.
- Carefully pull the ribbon cables down and out with your fingers.

⚠ Do not use pliers to pull the cables, as they can be damaged easily.

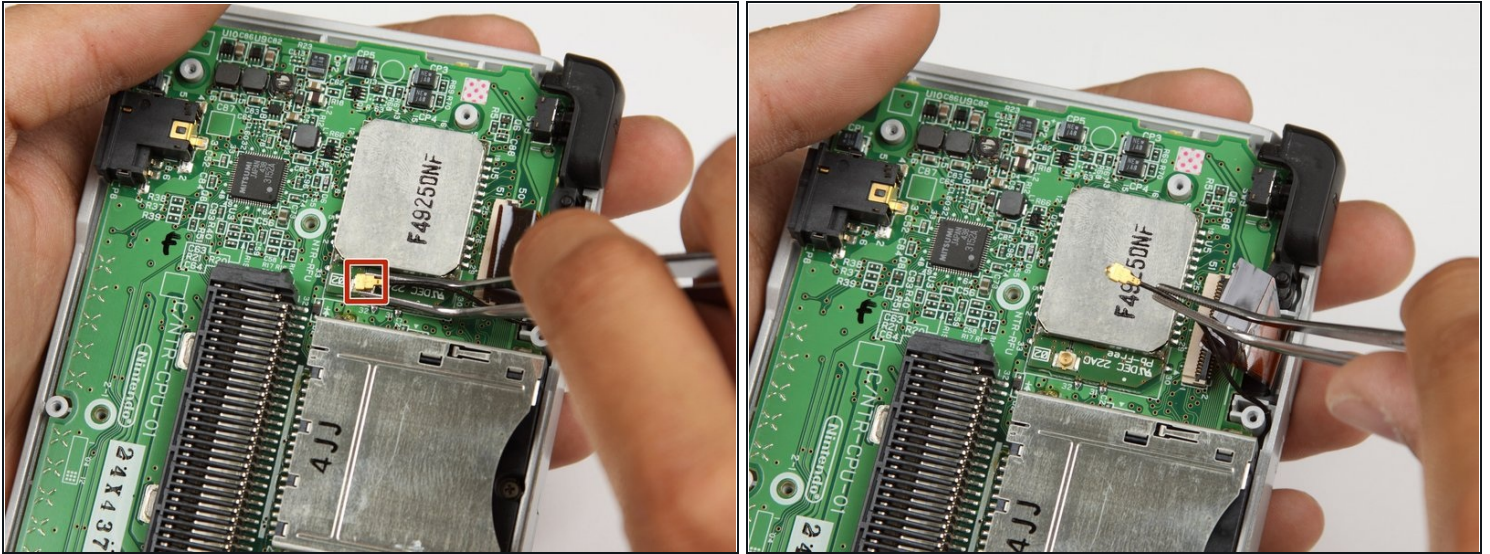
Step 8



- Locate the two small ribbon cables, beneath the rightmost large ribbon cable.
 - Slide the locks for the small ribbon cables down to the side, and remove the cables.
- ① It may be useful to use tweezers to remove the small ribbon cables.

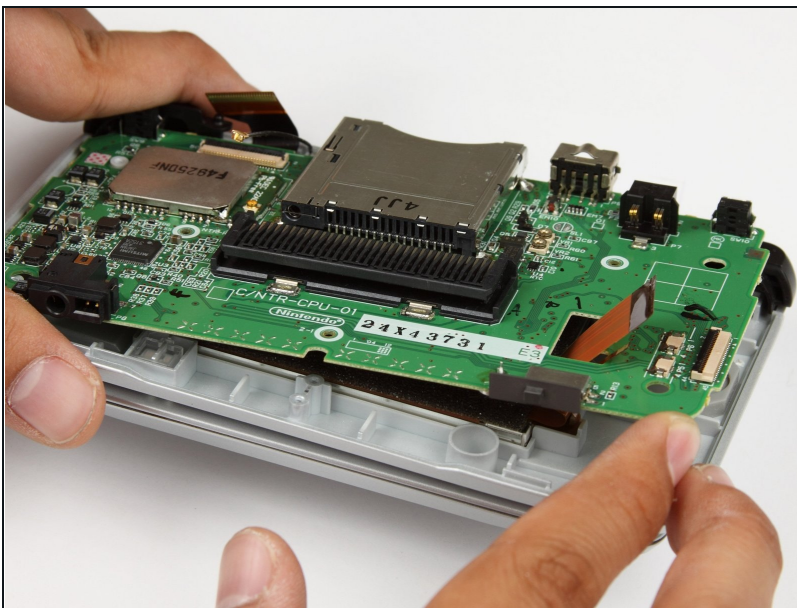
⚠ Be careful not to damage the delicate ribbon cables.

Step 9



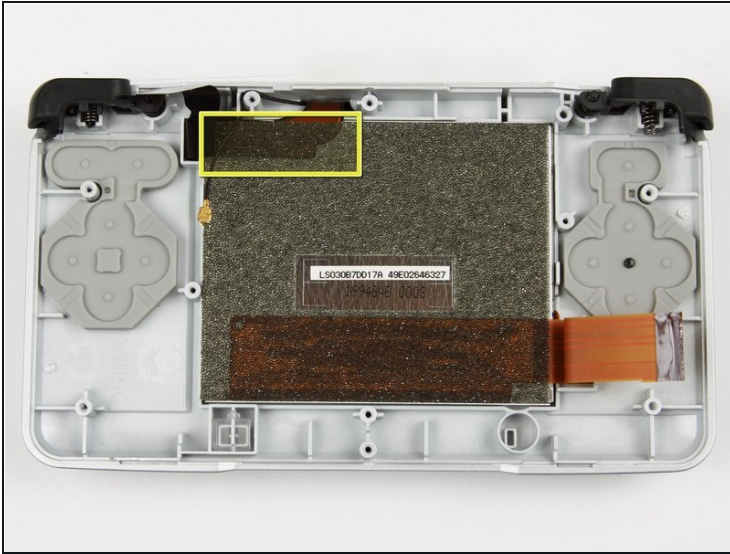
- Locate the Wifi antenna pigtail connector.
- Remove the antenna by grasping it at the head with tweezers. Using a slight rocking motion, pull up to dislodge the connector.

Step 10



- Feed the ribbon cables through the opening on the board.
- Pull up and remove the circuit board, and set it aside.

Step 11 — Bottom LCD Screen



- Peel off the black cushion foam on the bottom touch screen to expose the ribbon cable.
- Gently lift the screen out of the base.

To reassemble your device, follow these instructions in reverse order.