



Sony BDP-6500 Disk Assembly Replacement

If your Sony BDP-6500 (Blu-ray player) is not...

Written By: Joshua Thomas



INTRODUCTION

If your Sony BDP-6500 (Blu-ray player) is not playing your disks properly, it could have a faulty disk lens, which is located in the disk assembly of the player. Use this guide to replace the disk assembly of your Blu-ray player.

The disk lens of your player uses a laser to read the information of a disk. The player then displays the information on your screen. A faulty disk lens will render the player unable to read and play disks.

Before attempting the repair in this guide, check the disks you are inserting into the player for problems such as scratches, which may render the disk unreadable. Another possible solution is to turn off your player, unplug it, and leave it for 30 seconds (hard reset). Then, plug it back in and check if your problem remains.

Before you begin this guide, make sure to disconnect the player from any external power sources.

When you remove the disk assembly, do not open it, since the laser radiation from the disk lens could damage your eyes.

TOOLS:

Phillips #1 Screwdriver (1)

ESD Safe Blunt Nose Tweezers (1)

Step 1 — Disk Assembly



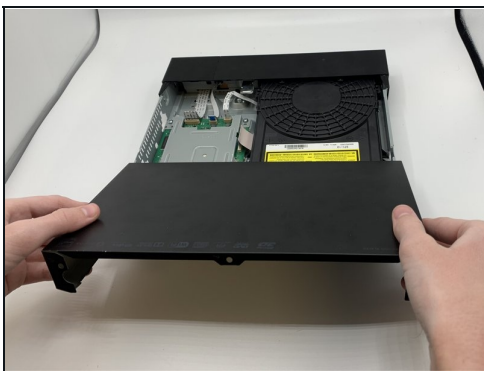
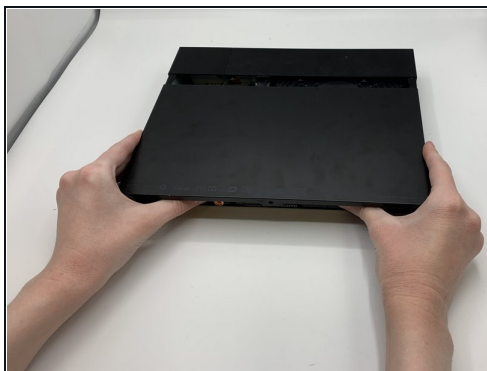
- Turn the player around so that the back is facing you.

Step 2



- Remove the three Phillips #1 screws.

Step 3



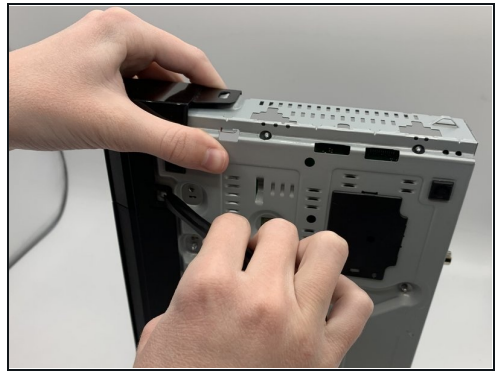
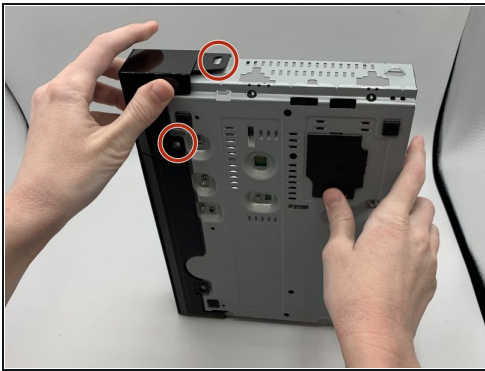
- Remove the top cover by sliding it off.

Step 4



- Turn the player around so that it appears as shown.

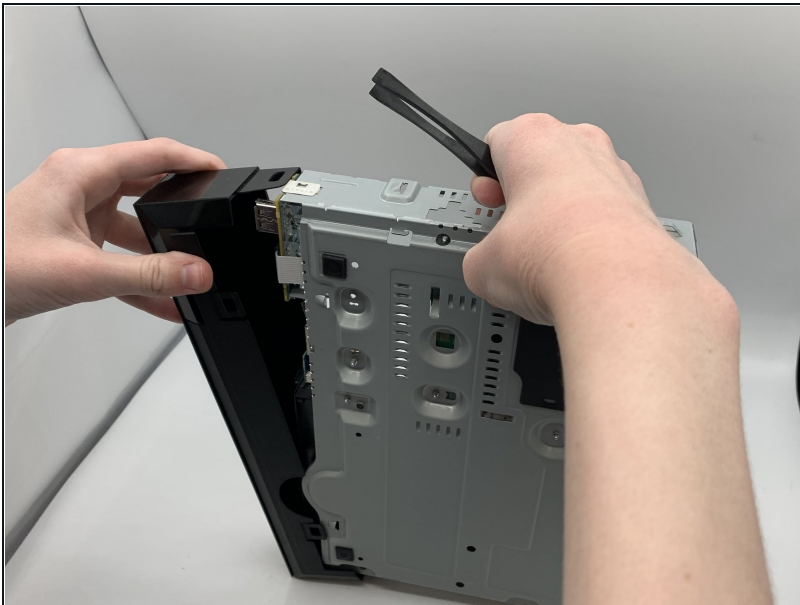
Step 5



- Pull up the two tabs with a pair of plastic tweezers.

i You can use any tool that will give you leverage to pull up the tabs. Alternatively, you can use your fingers, but it may be more difficult.

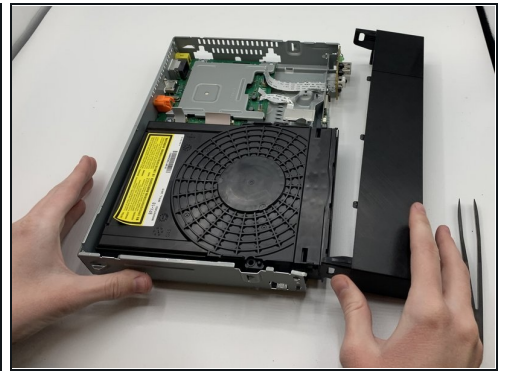
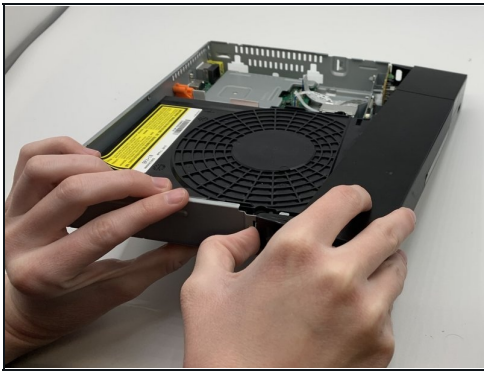
Step 6



- Slightly pull off the front cover.

i You will only be able to partially remove the front cover at this point. Keep pulling off until you feel resistance from the other side.

Step 7



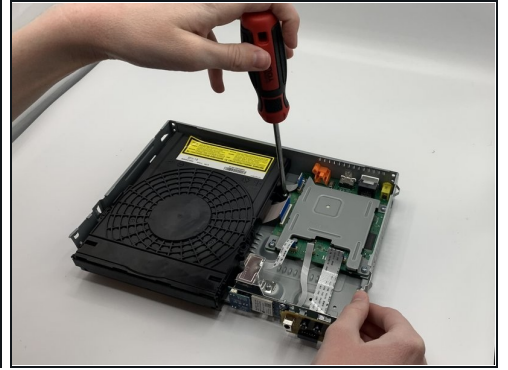
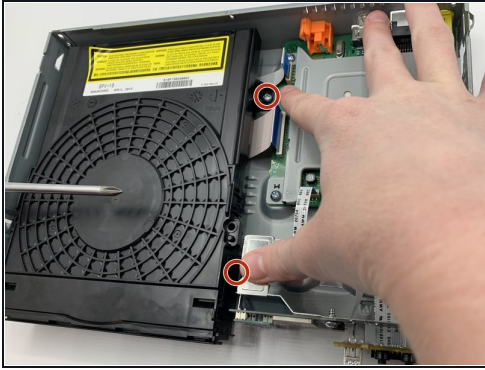
- Pull up the two tabs on the other side using a pair of tweezers.
- Pull the front cover off.

Step 8



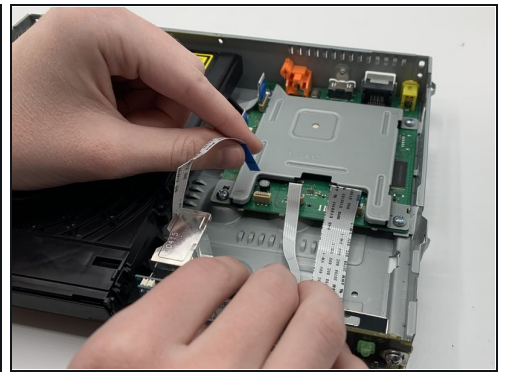
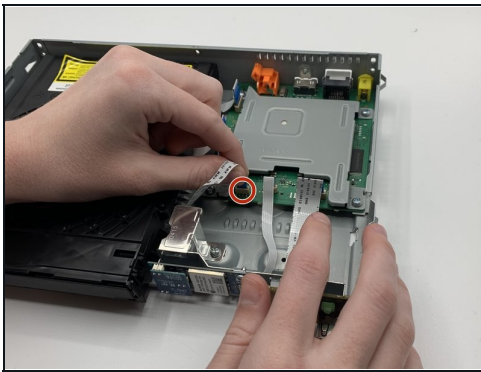
- Orient the player as shown.

Step 9



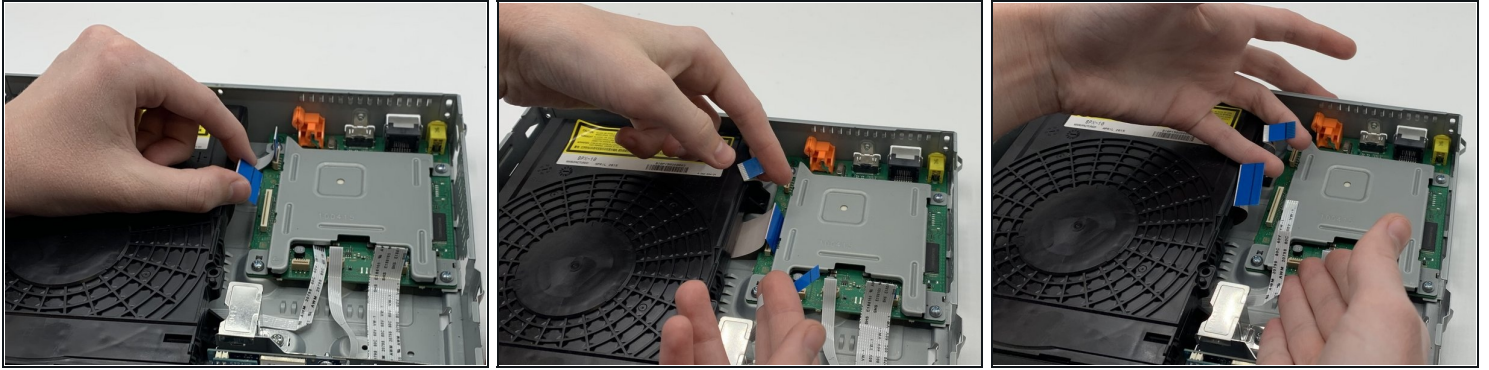
- Remove the two Phillips #1 screws using a screwdriver.

Step 10



- Pull the first of three ribbon wires out of its socket using your fingers.
- ⓘ You may experience significant resistance when pulling out each of the wires.

Step 11



- Pull the other two ribbon wires out of their sockets.

Step 12



- Lift up the right side of the disk assembly.
- Slide the disk assembly to the right.
- Lift up the disk assembly to remove it.

⚠ Do not open up the disk assembly once you remove it from the player. If opened, your eyes may be harmed by the laser radiation from the disk lens within.

To reassemble your device, follow these instructions in reverse order.