



# Compaq Armada 1585DMT RAM Replacement

This guide will assist you in replacing the Random Access Memory (RAM) of a Compaq Armada 1585DMT Laptop.

Written By: Tyler Parks



## INTRODUCTION

If your Compaq Armada 1585DMT Laptop is functioning slowly, or if you have witnessed the nefarious “blue screen of death,” it is likely time to replace your random-access memory (RAM). RAM functions to store temporary data and is a crucial part of any computer. Replacing your RAM using this guide will improve the speed and performance of your laptop.

Before beginning, be sure to power off your laptop and disconnect it from any power sources or external cables/devices.

Remember: Always take care when disconnecting and reconnecting cable pins and RAM sticks, as any damage to the pins and/or connectors can cause the device to not work properly.



### TOOLS:

- [Star/Socket Bit screwdriver \(1\)](#)  
T 9x2''
- [Spudger \(1\)](#)



### PARTS:

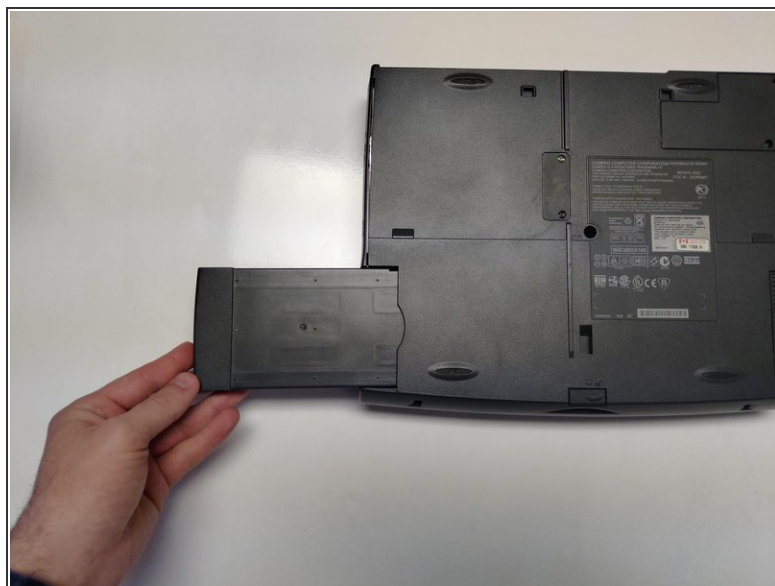
- [32MB, 4x64-60ns, 144p SO DIMM, 3.3v, EDO \(1\)](#)
- [64MB, 4x64-60ns, 144p SO DIMM, 3.3v, EDO \(1\)](#)

## Step 1 — Random Access Memory (RAM)



- Turn the laptop over on its backside.

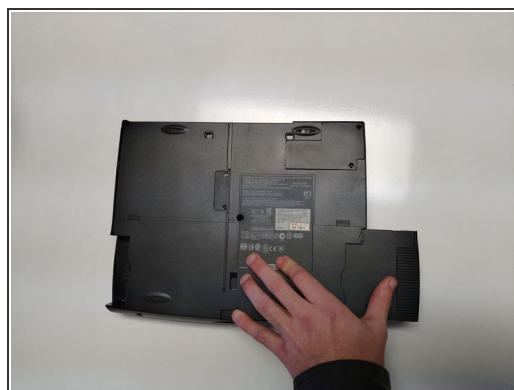
## Step 2



- Push down the battery pack clamp located on the right side of the laptop.
- Pull the battery pack outwards and away from the laptop.



### Step 3



- Push down the floppy disk drive clamp located on left side of laptop.
- Pull the floppy disk drive outwards and away from the laptop.

### Step 4



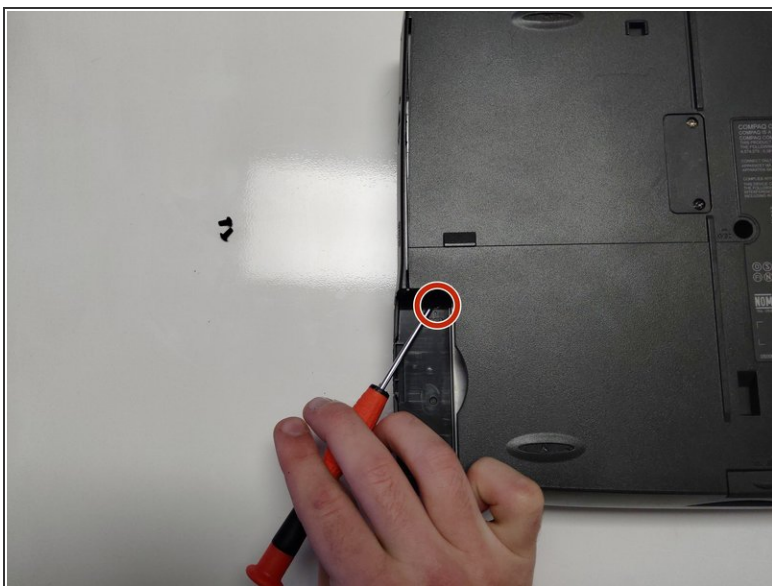
- Remove the single 4mm Torx screw from the bottom center of the laptop.

## Step 5



- Remove the single 4mm Torx screw, located beneath the floppy disk drive bay.

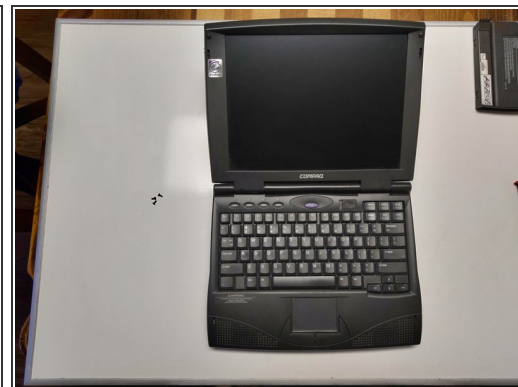
## Step 6



- Remove the single 4mm Torx screw from beneath the battery pack bay.

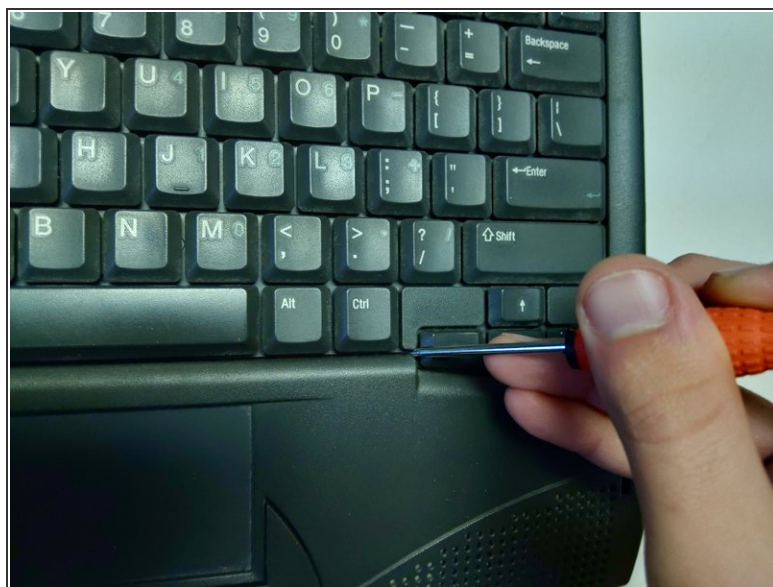


## Step 7



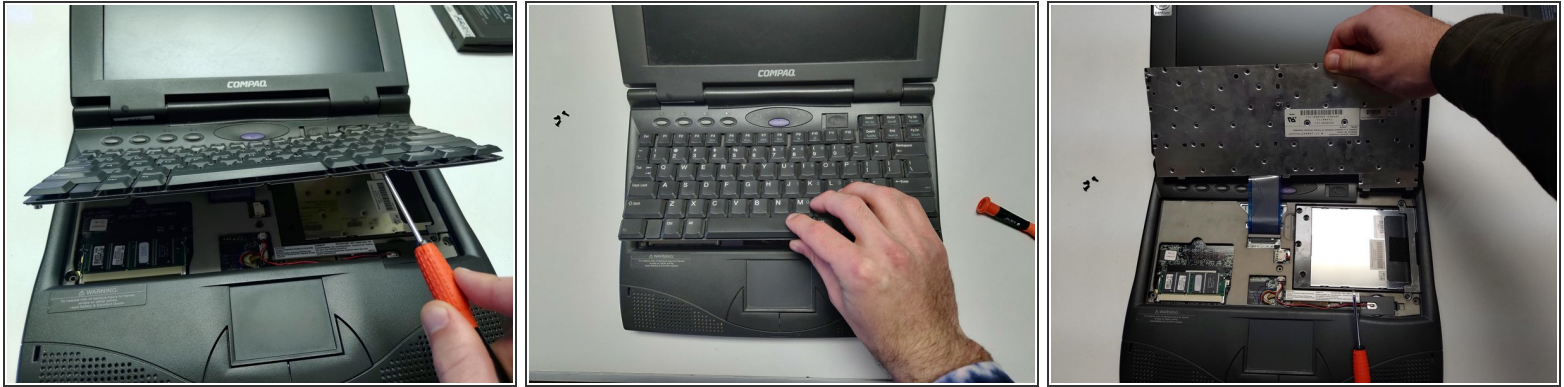
- Flip the laptop right-side up.
- Open the laptop, exposing the screen and keyboard.

## Step 8



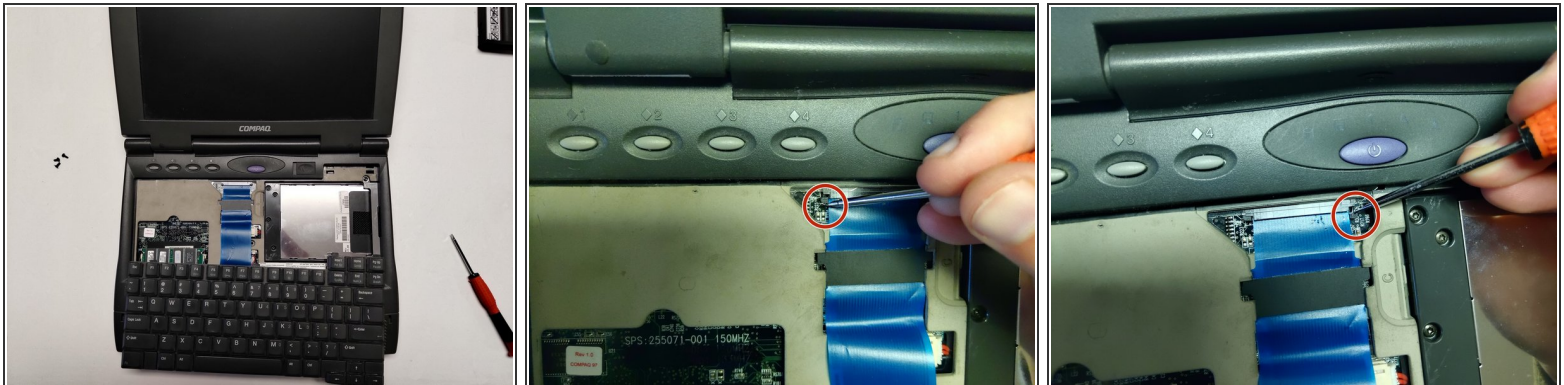
- Gently wedge the flat end of a spudger between the keyboard and laptop chassis.
- ❗ The easiest place to start a wedge is the non-clickable part of the keyboard between the right-control and arrow keys.

## Step 9



- Pry the keyboard away from the laptop chassis.
- Lift the keyboard up and away.

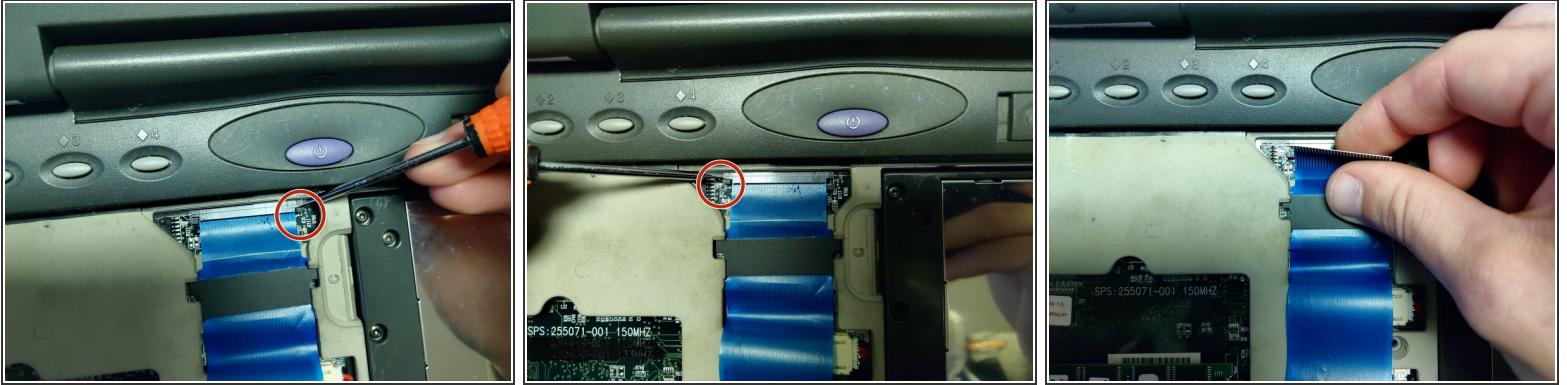
## Step 10



- Move the keyboard away from the blue ribbon connector.
- Using a spudger, pull the two small tabs connecting the cable to the motherboard away from the cable's connector bay.

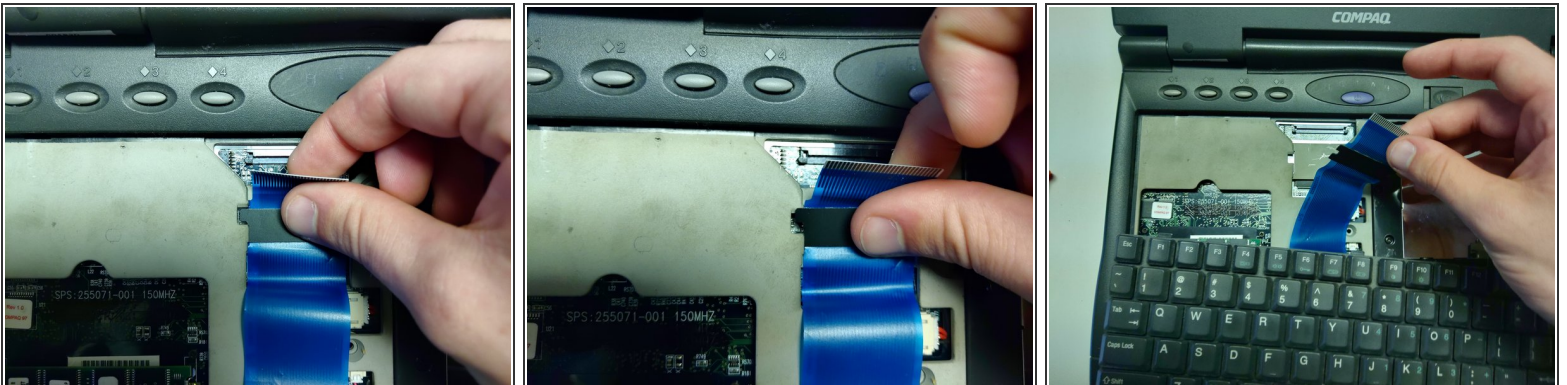


## Step 11



- Pull back both the black tabs until the tabs are completely extended.
- Pull the connector away from its bay.

## Step 12



- ⓘ The blue ribbon cable has a large black tab with plastic **indicators** sticking out.
- Slide the cable down until the **indicators** are visible under the open slot of the motherboard casing.
- Pull the cable out and away from the motherboard.

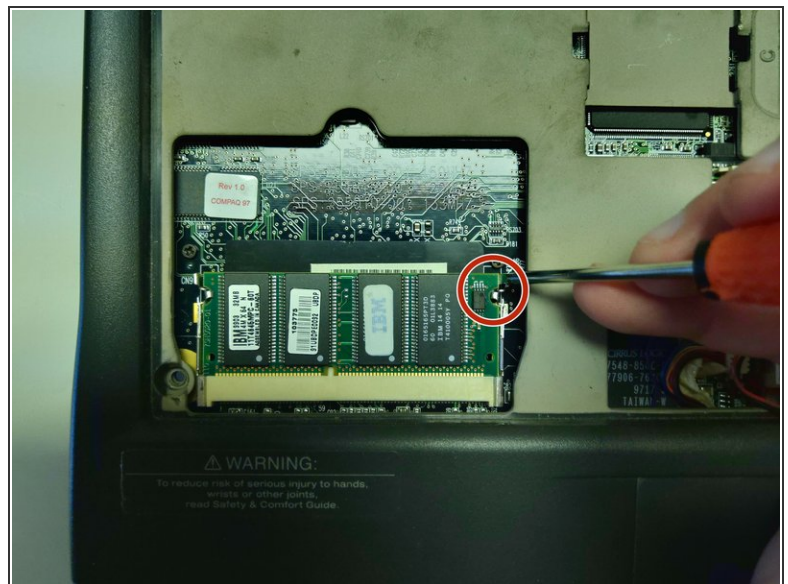
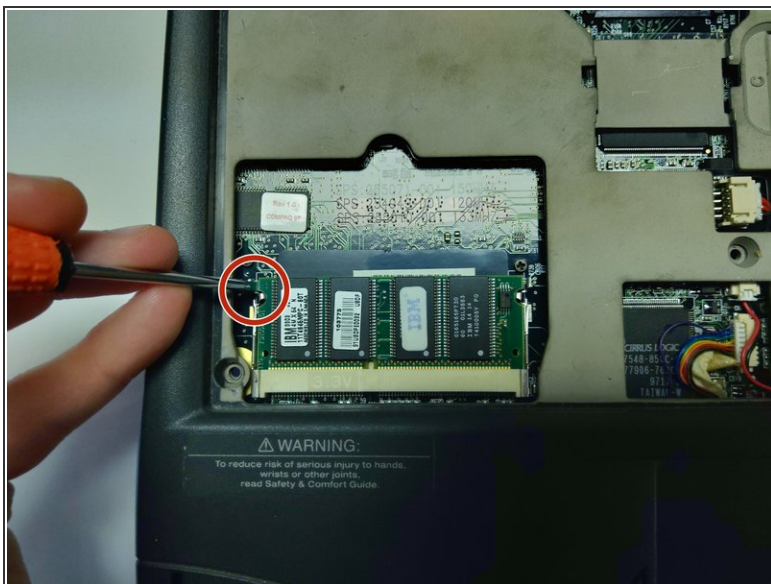


## Step 13



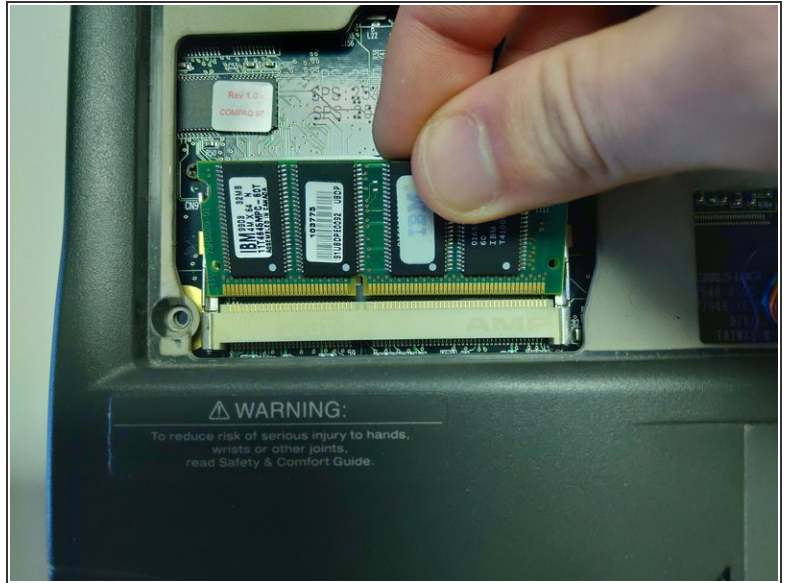
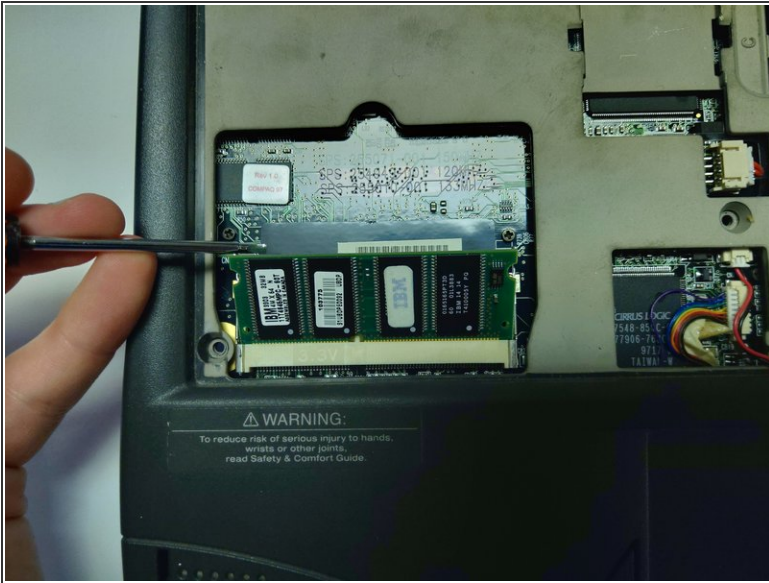
- Completely remove the keyboard.

## Step 14



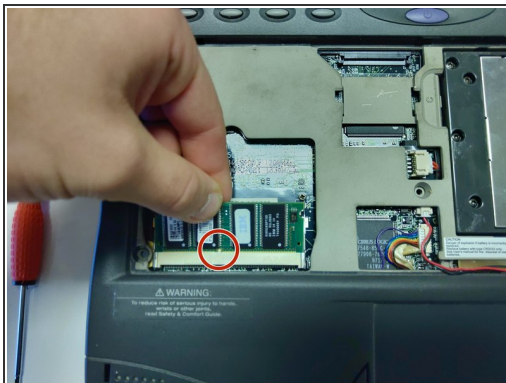
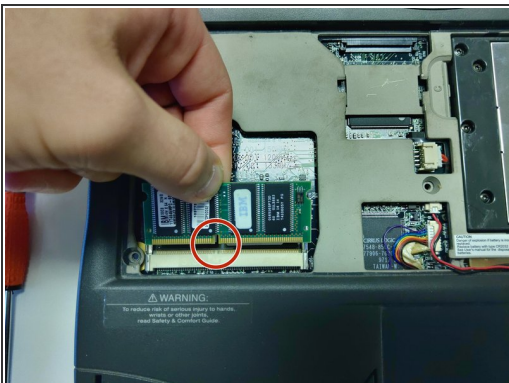
- Using a spudger, pull back the two metal tabs holding the RAM in place until the RAM pops out of its socket.
- ⓘ The RAM stick is located on the lower left hand side of the laptop base, beneath where the left-shift key would be.

## Step 15



- Lift the RAM stick gently with your spudger.
- Use your hand to gently press the RAM stick back, towards the laptop, without reattaching it to the metal tabs.
- Pull the RAM stick outwards and away from the connector it was previously attached to.

## Step 16



- Align the replacement stick's connector notch to the notch seen on the motherboard connector.
- Slide the stick in at an upwards angle.
- Firmly press down on the stick until it locks back in to the metal pins.



**To reassemble your device, follow these instructions in reverse order.**

When reattaching the keyboard, slide the board in topside first, then lay the bottom down to secure.