



Toshiba Satellite L305-S5875 Speakers Replacement

Installing new speakers if the old ones are nonfunctional.

Written By: Juan



INTRODUCTION

If your speakers lose their sound quality, it is possible to replace them.



TOOLS:

- [Phillips #00 Screwdriver](#) (1)
-

Step 1 — Battery



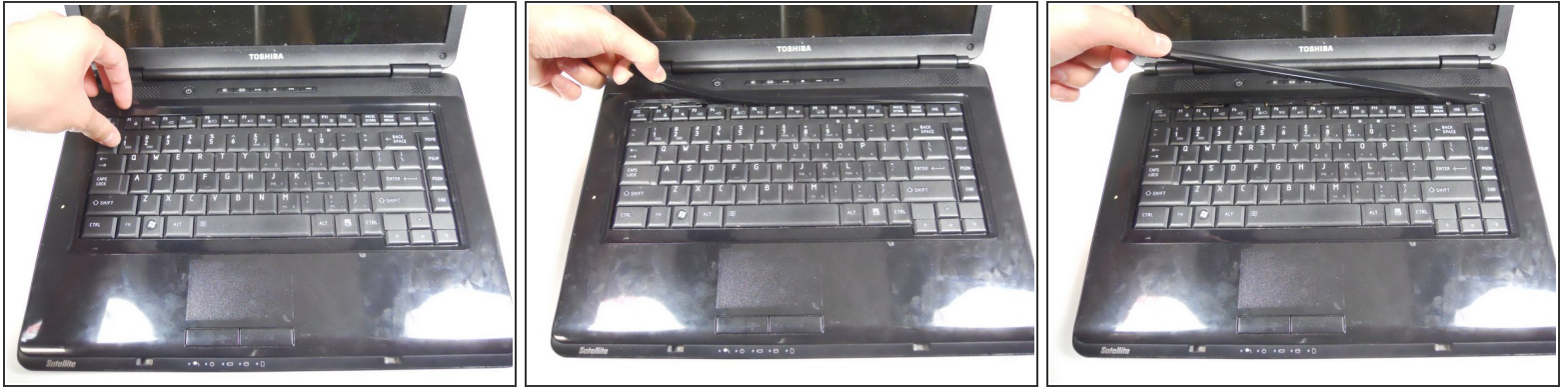
- Close the laptop lid and flip the laptop over.
- Switch the lock button on the left to the unlock position. (The unlock position is to the left side.)

Step 2



- Push the release button to the right.
- Hold the release button to the right and lift the battery out of its housing.

Step 3 — Keyboard



- Open the laptop so the keyboard is facing you.
- Using your fingers, remove the thin plastic cover above the keyboard.

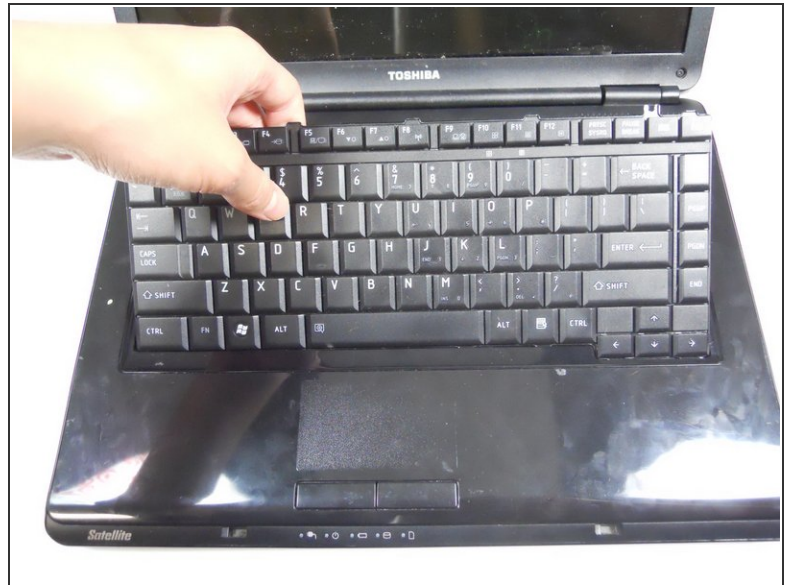
⚠ Potential for device damage: Do not apply too much force when removing the cover piece as it can break.

Step 4



- Remove the two 4.8 mm screws from underneath the plastic cover piece using a Phillips #00 screwdriver.

Step 5



- Starting at the top, gently raise the keyboard enough to remove it from the socket.

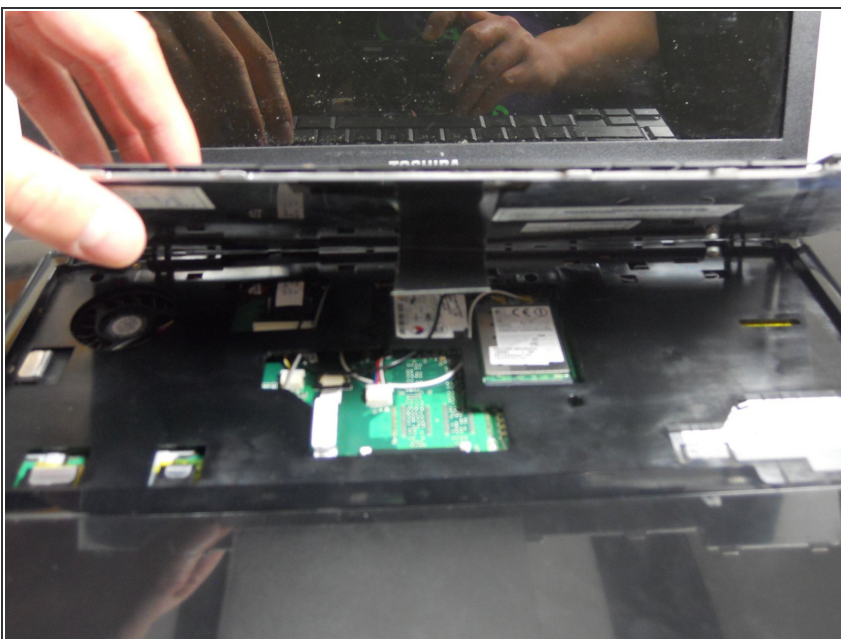
⚠ Potential for device damage: DO NOT pull out the keyboard after it's out of its socket. The keyboard is connected to the hard drive through a data cable and removing forcefully could damage the cable and laptop.

Step 6



- Locate the data cable that is connected to the motherboard.
- Pull the white ZIF connector towards the screen to remove it.
- Pull the black ribbon cable away from the screen.

Step 7



- With the black ribbon cable now disconnected, remove the keyboard from its housing.

Step 8 — Speakers



- Close the laptop and flip it over.
- Remove all the 6.6 mm type-00 Phillips head screws along the perimeter and in the center of the laptop.

Step 9



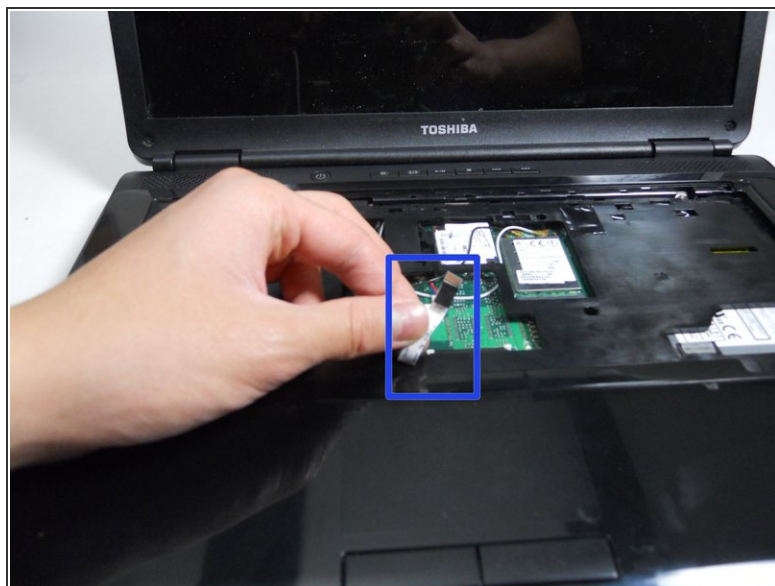
- Remove the three 3.7 mm type-00 Phillips head screws located in the battery compartment.

Step 10



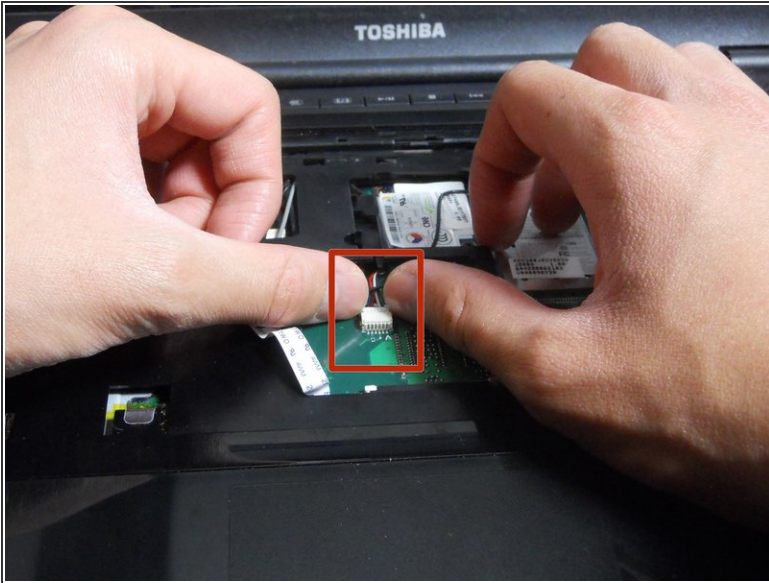
- Flip the laptop over and open the screen as far back as it can go.

Step 11



- Using your fingers, slide the black ZIF connector out.
- Once the ZIF connector has been moved, the white ribbon cable can be removed.

Step 12



- Using your fingers, remove the white plastic connector located to the right of the ribbon connector.

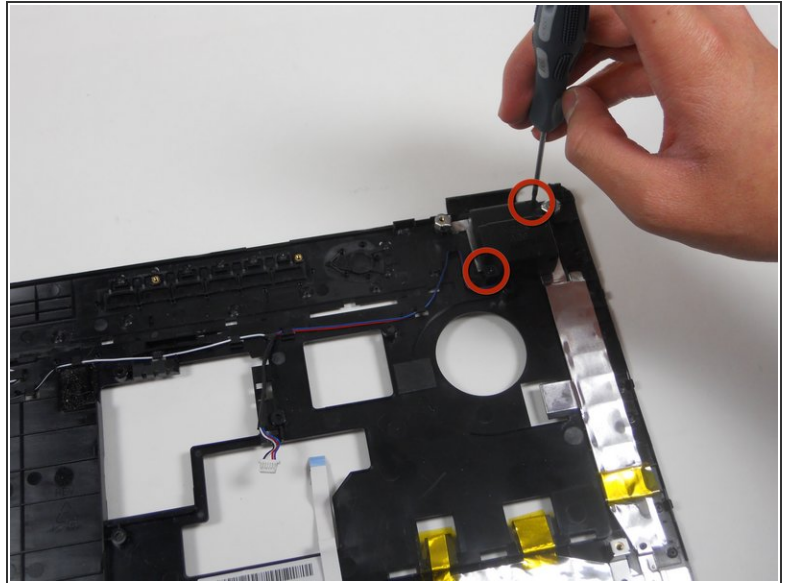
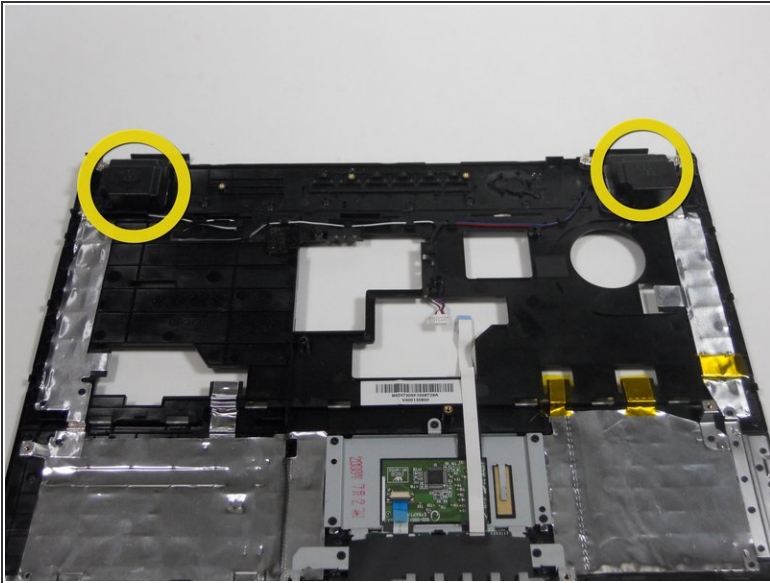
Step 13



- Use the blue plastic opening tool to begin removing the cover.
- After creating enough space, you can use your hands to completely open the cover.

⚠ Make sure all the screws have been removed before attempting to open the cover.

Step 14



- Put the laptop aside and locate the speakers attached to the cover.
- Remove the two 3.6 mm type-00 Phillips head screws from each speaker.

To reassemble your device, follow these instructions in reverse order.