



HP Mini 311 Keyboard Replacement

This installation guide will provide directions for the replacement of a keyboard on an HP Mini 311.

Written By: Christian Santoyo



INTRODUCTION

If you have experienced a malfunction with your keys or overall keyboard, you should change the entire keyboard on your HP Mini 311.



TOOLS:

- [Phillips #00 Screwdriver](#) (1)
-

Step 1 — Battery



- Lay the laptop on a flat surface, bottom side up and slide the two battery release latches toward the outside of the case.

Step 2




- Slide the battery away from the device to remove.

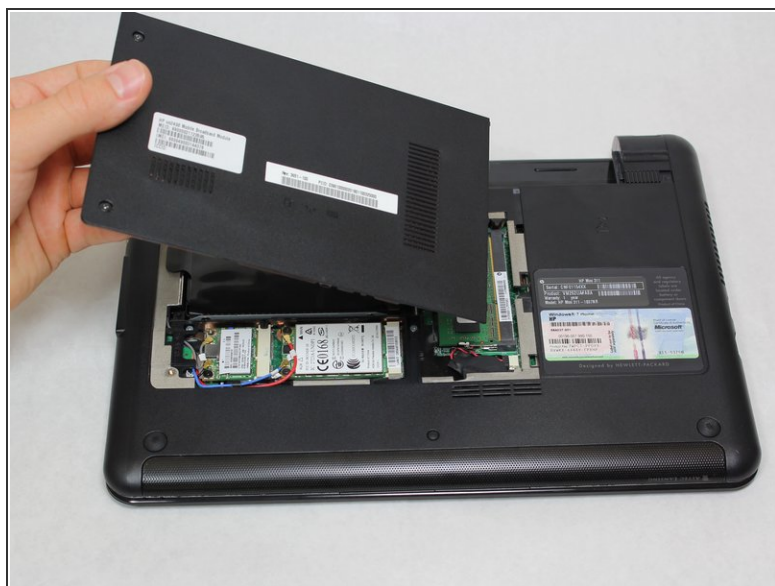
Step 3 — Memory Shield



- With the device still in a bottom side up position, proceed to unscrew the two 4.8mm Phillips 00 screws from the memory shield.

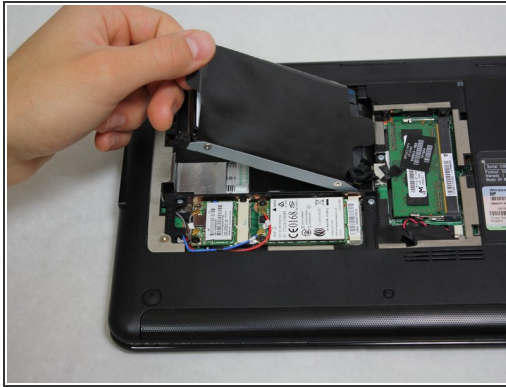
 The screws will remain in the shield.

Step 4



- Lift the memory shield up and remove from the laptop.

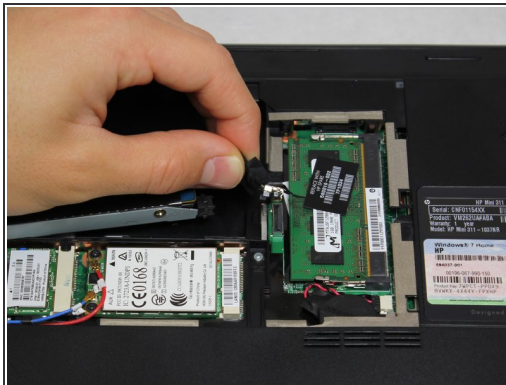
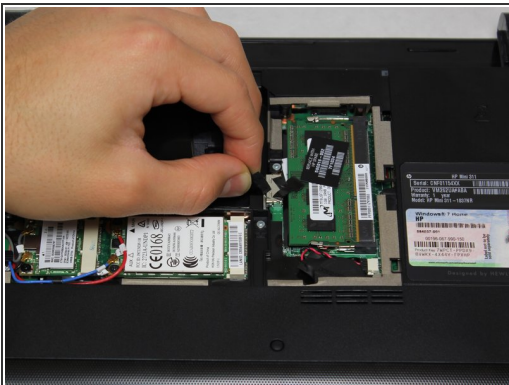
Step 5 — Hard Drive



- Grab the left black, plastic tab and carefully pull upward.

⚠ Be sure to pull carefully. Pulling too forcefully may damage the tab.

Step 6



- Grab a hold of the wire connecting the hard drive and the device.
- Pull upward, perpendicular to the surface of the laptop, releasing the connector tethering the hard drive to the motherboard.

Step 7 — Keyboard



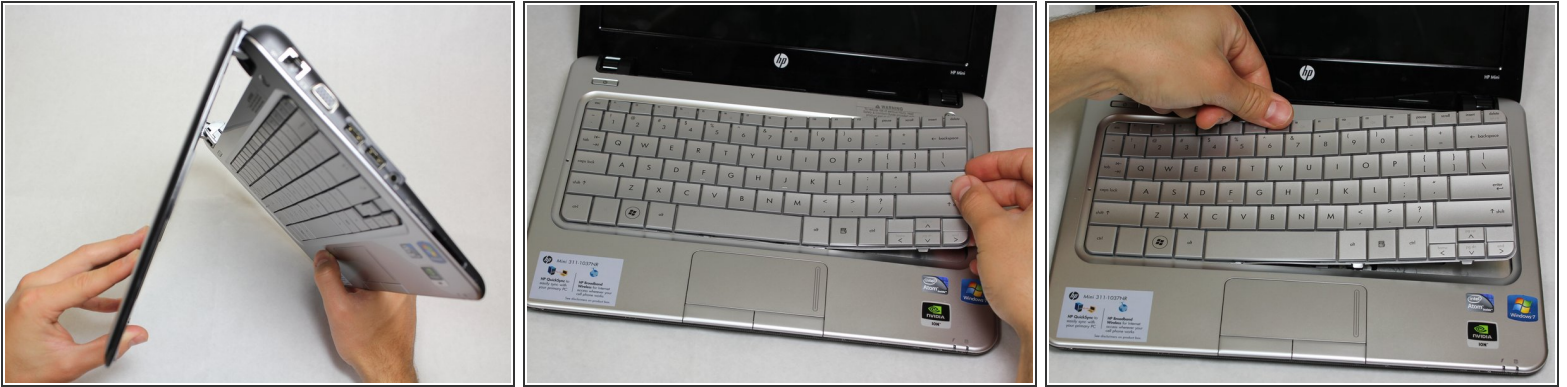
- Unscrew the four Phillip 00 5.6 mm screws located around the wireless card and RAM.



Step 8



- Open the laptop so that the screen and front of the keyboard are both facing the ground.
- Push on the opening on the back side of the device until the keyboard partially pops out.
- ⓘ This opening is located where the original hard drive was set.

Step 9



- Flip the device around and orient it so that the screen and keyboard are facing you.
 - Starting at the right side, work your way towards the left end and remove the keyboard by unhinging the latches attaching it to the base of the device.
-  The right side of the keyboard should be unattached.
-  Be gentle and patient. You don't want to pull the entire keyboard at once, but rather pull by sections.

Step 10



- Carefully pull the ribbon cable connecting the keyboard and the laptop to remove from the device.

To reassemble your device, follow these instructions in reverse order.