



# Toshiba Satellite M55-S135 Screen Replacement

This guide will provide a walk-through on how...

Written By: Matthew Trinh



# INTRODUCTION

This guide will provide a walk-through on how to remove the screen in your Toshiba Satellite.

## TOOLS:

Phillips #00 Screwdriver (1)

iFixit Opening Tool (1)

2.5 mm Flathead Screwdriver (1)

## Step 1 — Battery



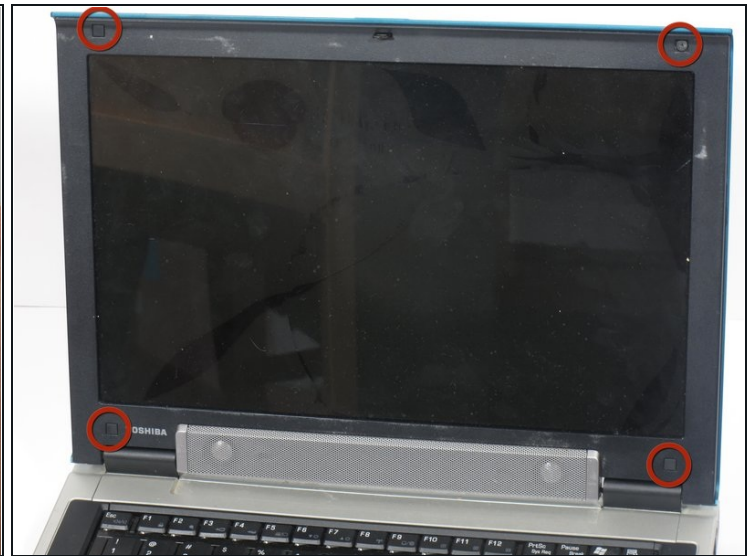
- Orient the laptop so that it is closed, faced down, and the battery is facing away from you.
- Slide the unlock switch in the top left-hand corner to the left/unlock position.

## Step 2



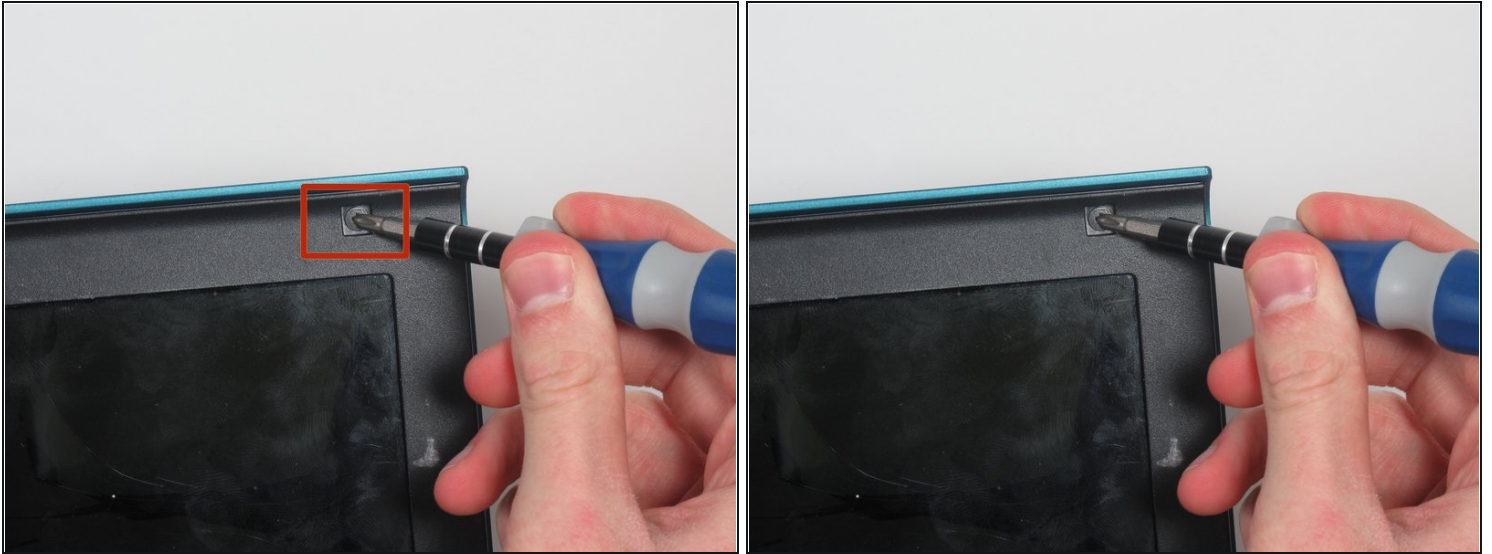
- Hold the switch in upper right-hand corner to the right.
- With the switch held open, pull the battery straight away from the laptop.

## Step 3 — Screen



- Use the plastic opening tool to remove the four small rubber pop-out squares from the corners of your screen.
- ⓘ The laptop displayed in the picture does not have these plastic squares.

## Step 4



- Use the Phillips 00 screwdriver to unscrew the four 6.72mm screws from the corners of the screen.
- ① The screws will be located underneath the previously removed black squares.

## Step 5



- Use the plastic opening tool to pop off the black plastic casing that surrounds the screen.

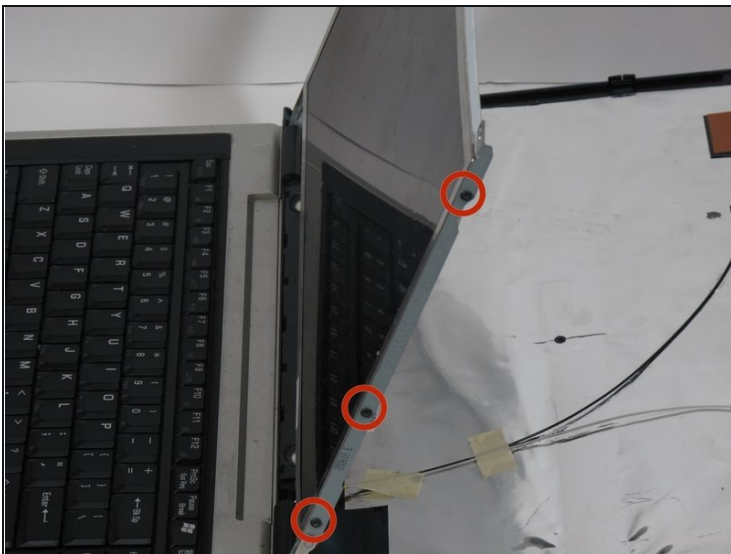


## Step 6



- Use the Phillips 00 screwdriver to remove the two 6.72mm screws at the bottom left and right of the screen.

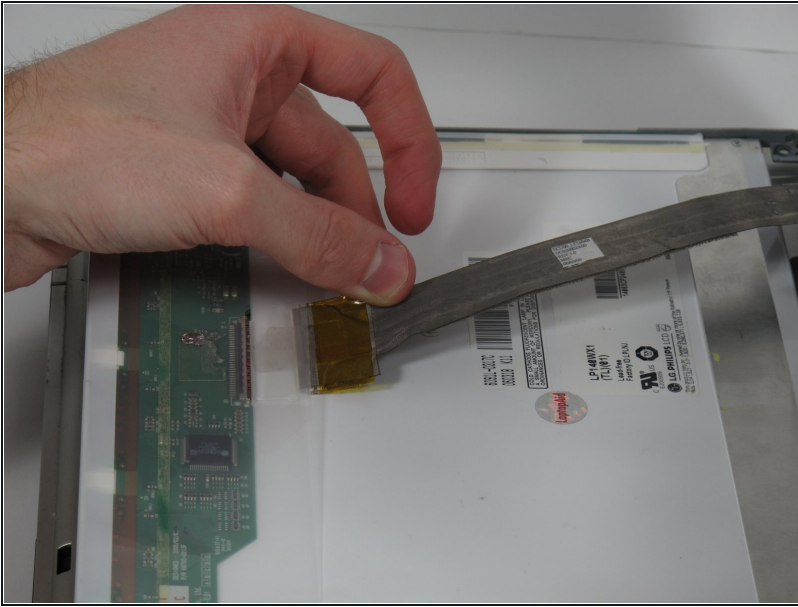
## Step 7



- Turn the laptop 90 degrees clockwise.
- Use the Phillips 00 screwdriver to remove the six 3.78mm screws from both sides of the screen.

⚠ Hold on to the screen while removing the screws.

## Step 8



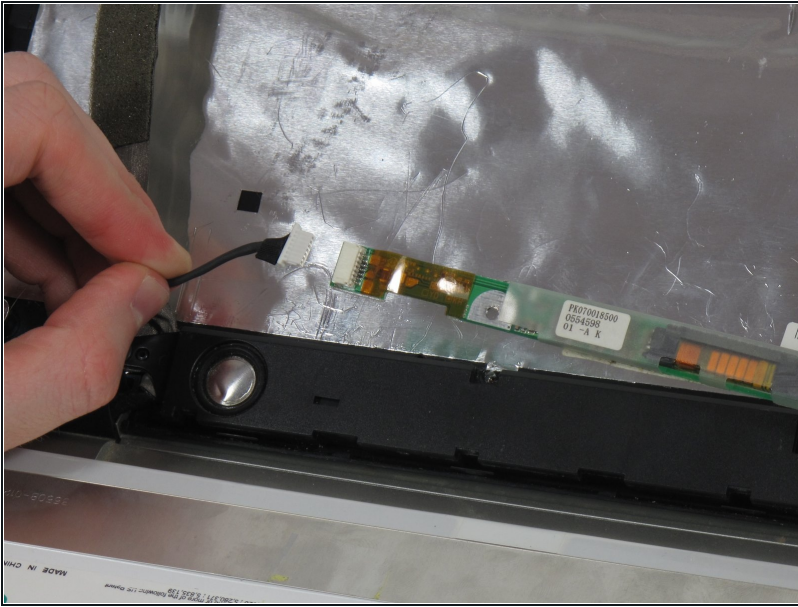
- Fold the screen down so that the back of the screen is visible.
- Remove the yellow wiring connected to the top of the back of the screen by pulling it out and then up.

## Step 9



- Use the Phillips 00 screwdriver to remove the 5.54mm screw connecting the green panel to the laptop frame.

## Step 10



- Pull out the green panel and disconnect the black cable from the belly of the green panel.
- ① The screen should be fully disconnected from laptop at this point.

---

To reassemble your device, follow these instructions in reverse order.