



# Epson PPC650 Screen Replacement

Written By: Anne



---

## 🔧 TOOLS:

64 Bit Driver Kit (1)

Phillips #00 Screwdriver (1)

Spudger (1)

Lead-Free Solder (1)

Soldering Iron (1)

---

### Step 1 — Case



- Make sure the camera is turned off here.
- Remove batteries from the battery compartment located on the bottom of the camera
- Remove SD card for the card reader compartment located on the flat side (left side) of the camera

## Step 2



- Remove 2 screws on the rounded side of the camera wisdom here.

## Step 3



- Remove 3 screws on the flat side of the camera
  - All silver screws go into the side of the camera that is silver
  - All black screws go into the side of the camera that is black

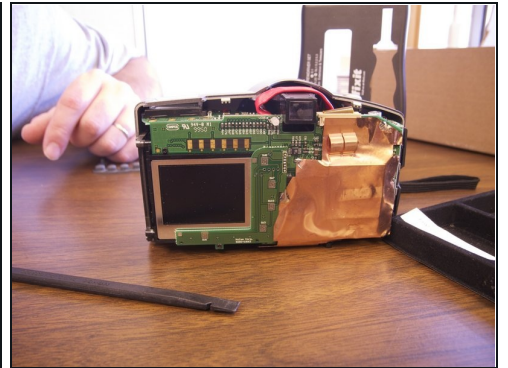


## Step 4



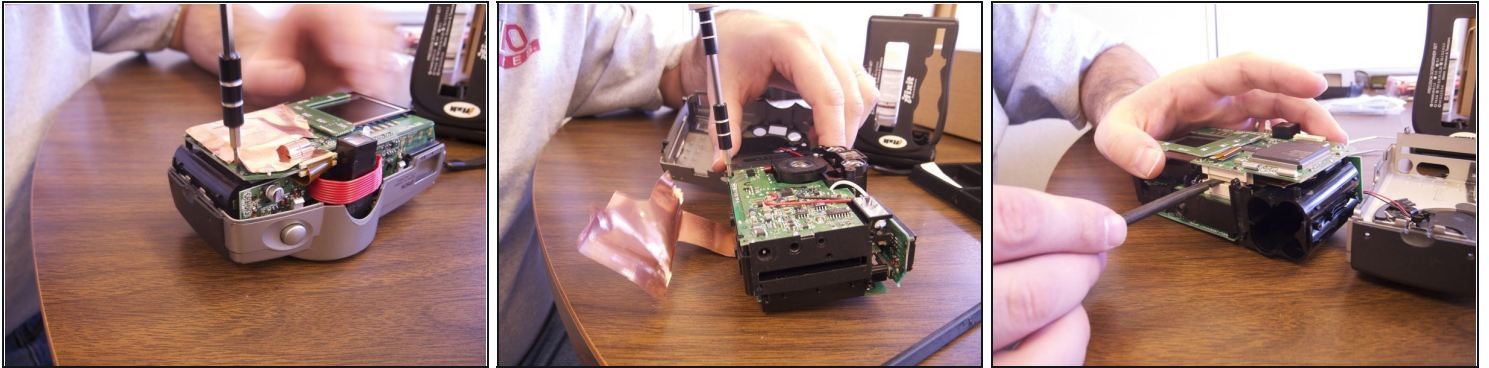
- Remove 4 screws from the bottom of the camera
- All silver screws go into the side of the camera that is silver
- All black screws go into the side of the camera that is black

## Step 5



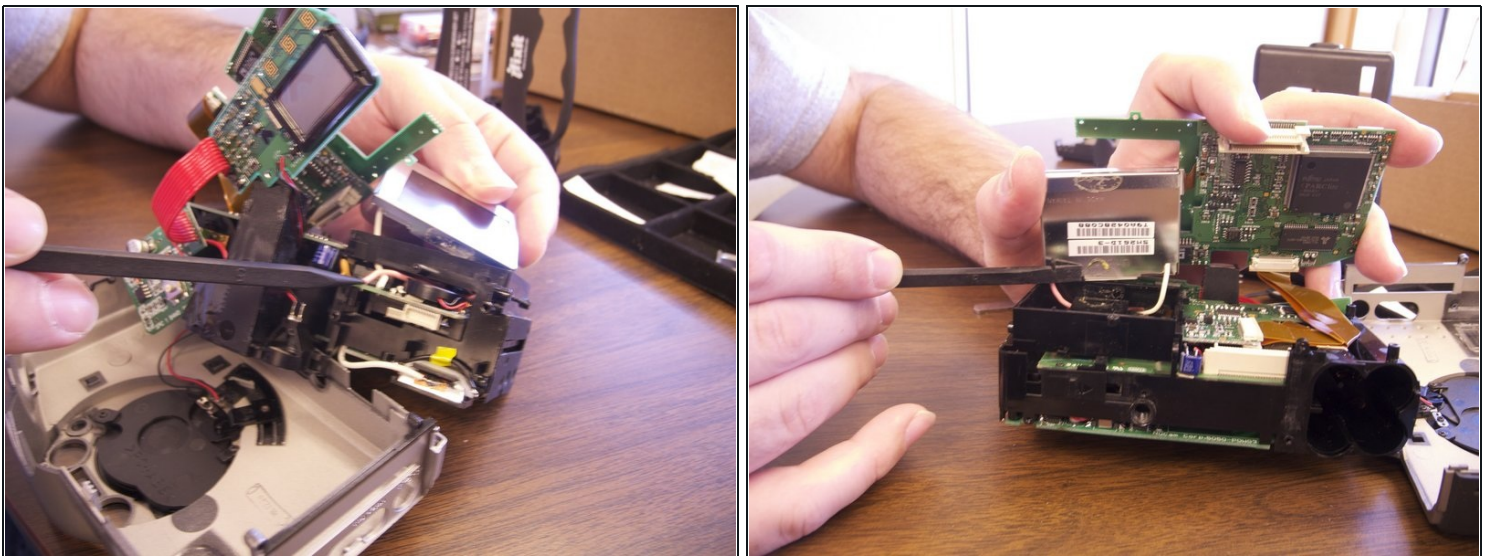
- Separate the front and back pieces of the cameras plastic casing using a spudger here.
- WARNING: When pulling the front plastic casing, be careful of the wire that are connected to the aperture control
- Use minimal force so that the plastic casing does not break
- When separating the small silver sliding indicator for view/off/playback may fall out
- The plastic viewing window located on the top of the camera may also become loose and fall out

## Step 6 — Screen



- Remove copper sheet from the front paneling and back.
  - You will need to use a spudger to unsolder the copper paneling
  - Use the spudger to separate the back circuit board from the camera

## Step 7



- The picture viewing screen is glued to the backing as well as wired in with pink and white wires.
  - Exert minimal force required to pull the screen loose from the camera
  - Remove the pink and white wiring from the internal paneling. These wires are soldered in
  - Remove the orange data hookup cable which feeds into the back circuit board

## Step 8



- Once all wires have been detached and the old screen has been removed place the new screen into the camera.
  - Insert data hookup into the back of the camera and into the new screen
  - Re-solder the new pink and white wire onto the internal circuit board
- 

To reassemble your device, follow these instructions in reverse order.