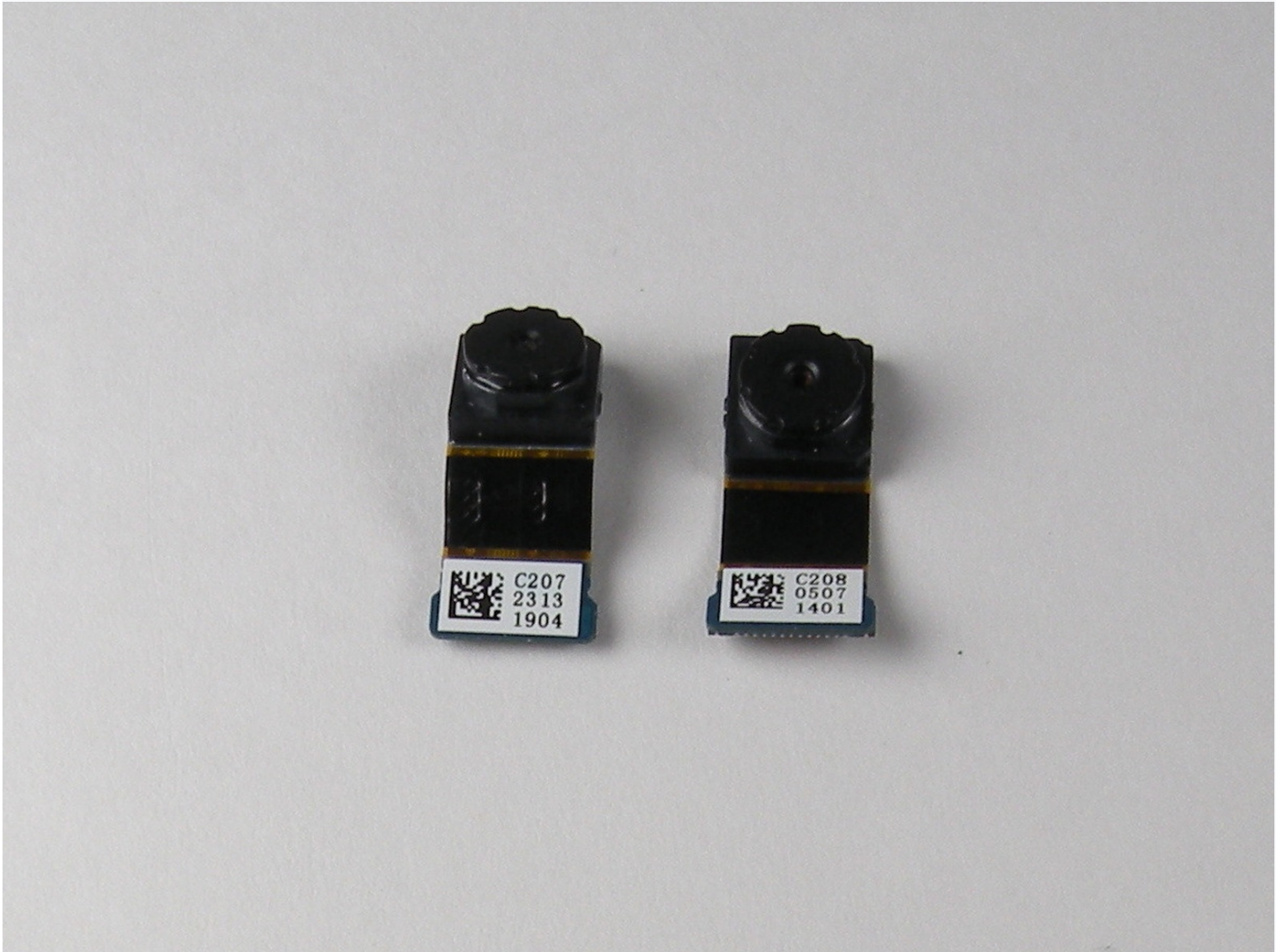




Microsoft Surface Camera Replacement

This guide provides step by step instructions...

Written By: Shahn Pudumjee



INTRODUCTION

This guide provides step by step instructions that will walk you through installing either camera the tablet has. The difficulty of this task is intermediate and the estimated length is about 30min to an hour.

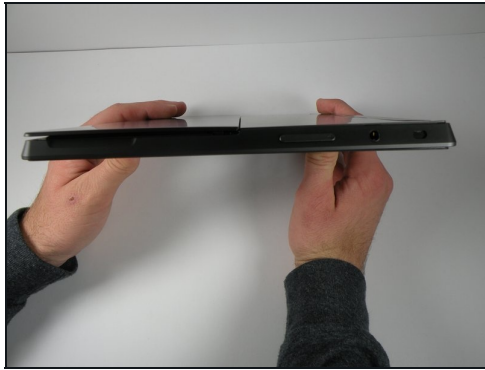
TOOLS:


[iFixit Opening Tool](#) (1)
[Spudger](#) (1)
[T5 Torx Screwdriver](#) (1)

PARTS:

[Microsoft Surface RT \(1st Gen\) Camera](#) (1)

Step 1 — Back Cover



-  Prior to any repairs make sure that the device is orientated correctly, and you are familiar with all ports and buttons. The screen should be facing up with the Windows logo located on the bottom.

 Turn off device prior to continuing

Step 2



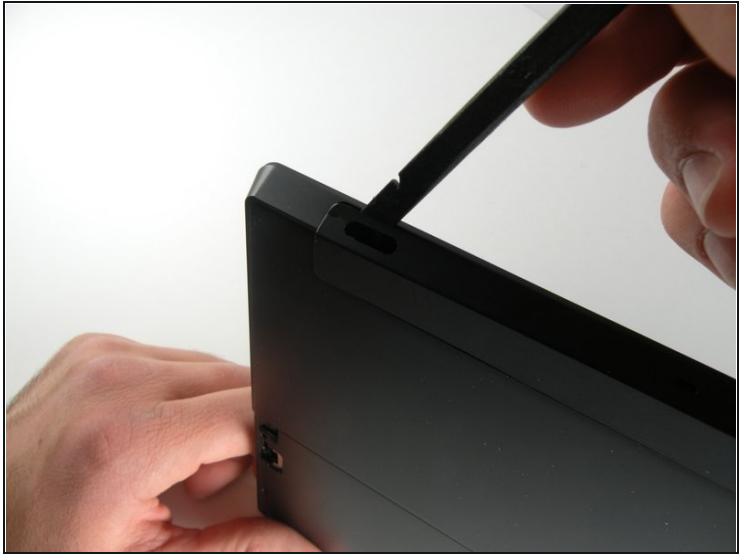
- Carefully turn the tablet over so the screen is facing down.
- Pull up on the bottom corners to open the stand.
- Refer to the images.

Step 3



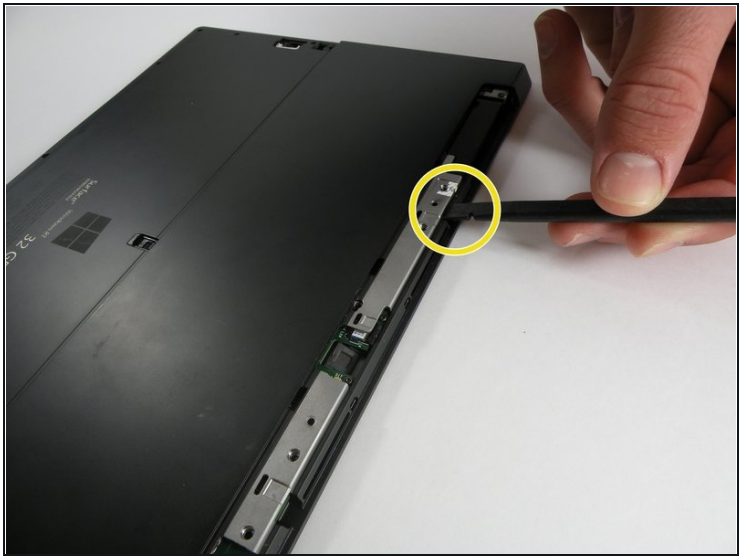
- Locate the two 5.08mm T5 Torx screws. The two screws will be located on the left and right sides in the kickstand.
- Make sure when removing the screws to be careful to prevent stripping of the head.
- With all the screws removed gently wiggle the stand side to side until the lever in the middle is free, releasing the stand.

Step 4



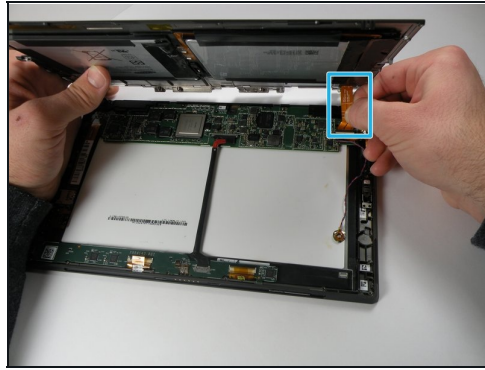
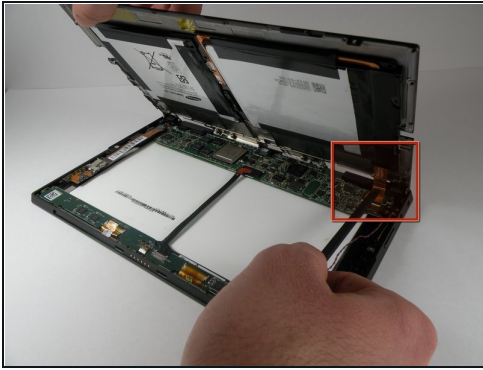
- Use a spudger or similar flat headed tool to release the small bezels out lined in the image. Remove the plastic trim covering the camera with the soft flat headed tool.
- ⓘ Be patient; you will have to work around the casing because there are several small bezels along the edges.

Step 5



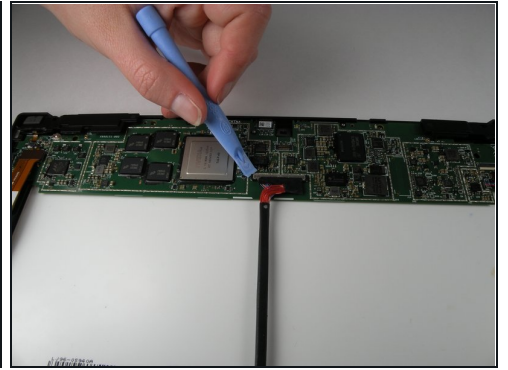
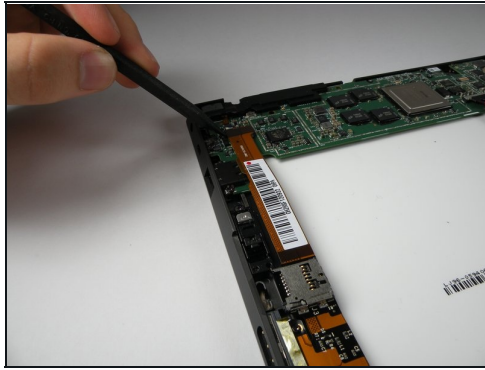
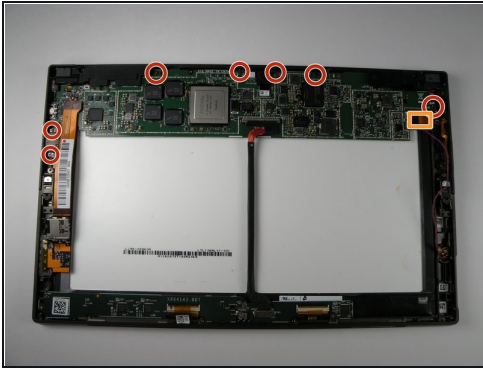
- Next, remove the ten 5.92mm T5 torx screws located underneath the kickstand.
 - Remove the seven 5.87mm T5 torx screws located under the camera casing. There is a sticker covering the second screw from the left.
 - Disconnect the rear cover from the main shell of the system by loosening it with a spudger where the gaps exist.
- ⚠ There is an electrical ribbon connecting the rear cover to the motherboard. Do not pull apart the rear cover from the motherboard once you have loosened the rear cover from the main system.
- Continue working your way around to each corner and loosen the snap-ons on each side until the rear cover comes off.

Step 6



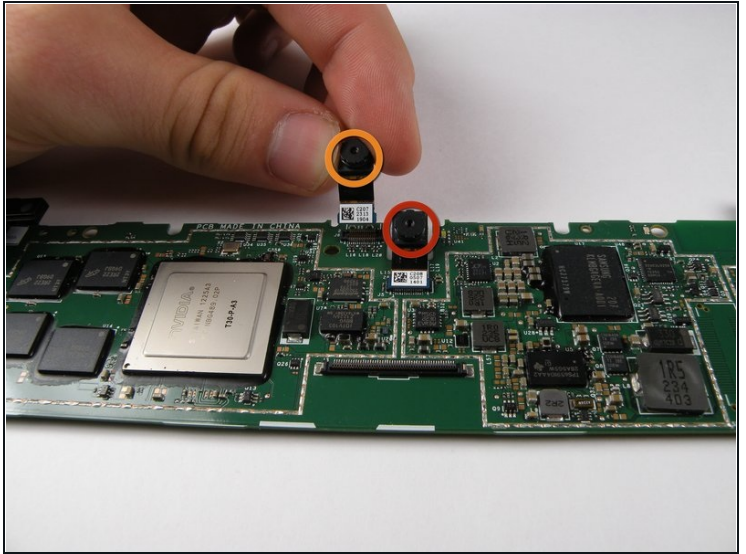
- Rotate the device 180 degrees so that the bottom of the device is facing you.
 - A ribbon connects the battery on the rear cover, to the motherboard. Slowly lift the bottom of the rear cover up until you can see the ribbon.
 - Use a spudger to push the ribbon away from the motherboard and parallel to the motherboard in order to remove the ribbon.
 - Separate the rear cover by lifting it up away from the main system.
- ⓘ When reassembling the rear cover to the motherboard, reinserting the ribbon cable with a spudger may prove difficult. In this case, gently use your hands to slide the cable end into the slot until they click into place.

Step 7 — Camera



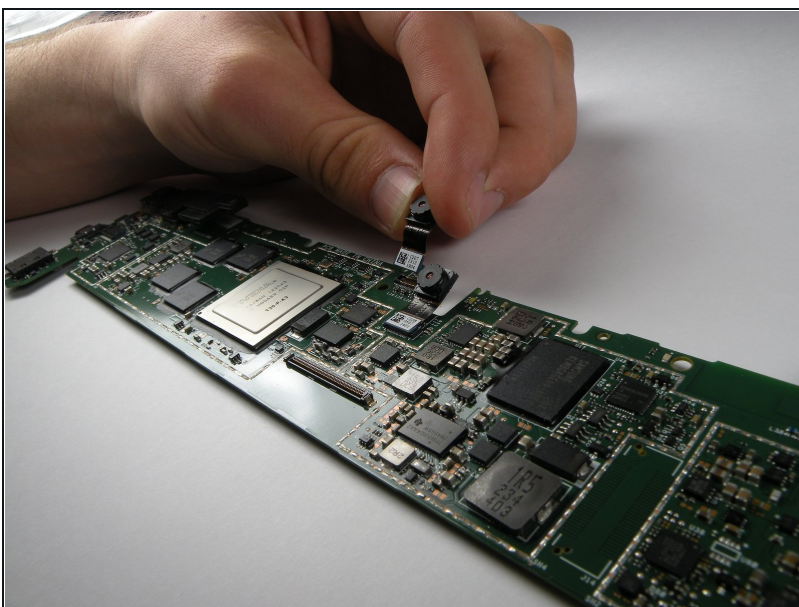
- Unscrew the seven 3.61mm T5 Torx screws from the motherboard.
- Use the plastic opening tool to lift the lab and unplug the orange ribbon on the right side of the motherboard.
- Use the plastic opening tool to lift the tab connecting the orange ribbon to the motherboard.
- Use a plastic opening tool to lift the display and digitizer cable plug from the middle of the motherboard.

Step 8



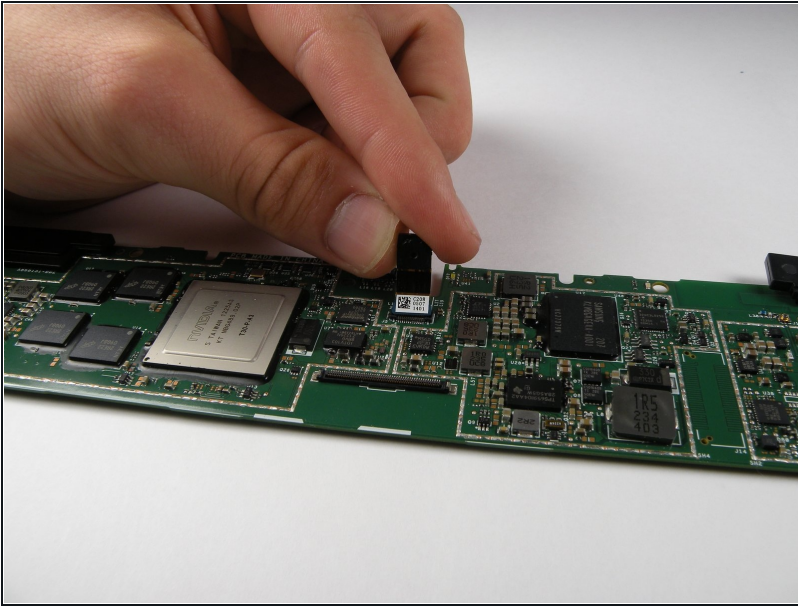
- Lift the motherboard and pull it away from the back plate.
- Locate the two cameras near the center of the motherboard.
 - Front facing camera
 - Rear facing camera

Step 9



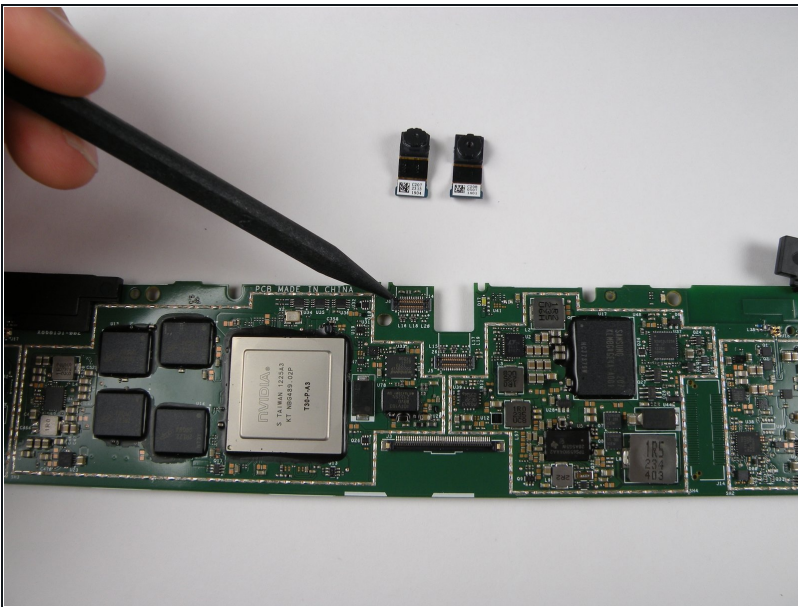
- Avoid touching the lens of the camera and unplug it from the bottom of the motherboard.

Step 10



- Avoid touching the lens of the camera and unplug it from the motherboard.

Step 11



- ★ When you replace the camera(s), and make sure that they line up with the front and back cover.

To reassemble your device, follow these instructions in reverse order.