



Sony Alpha 5100 LCD Replacement

This guide will help you replace your Sony Alpha 5100 LCD.

Written By: Kevin Raggiani



INTRODUCTION

This guide will be showing you how to get into the back of the LCD screen on the Sony Alpha 5100 (ILCE-5100/5100L). This guide will help if you are having trouble with the [camera screen not working](#). Since we are exposing the electronics underneath the screen, do not expose the inside to water.



TOOLS:

- [iFixit Opening Tools](#) (1)
 - [Phillips #00 Screwdriver](#) (1)
-

Step 1 — LCD



- Slide the power switch on the top of the camera to "off."

Step 2



- Flip the LCD screen so that you have access to the back of the screen. The front of the screen should be facing the direction that the lens is facing.

Step 3



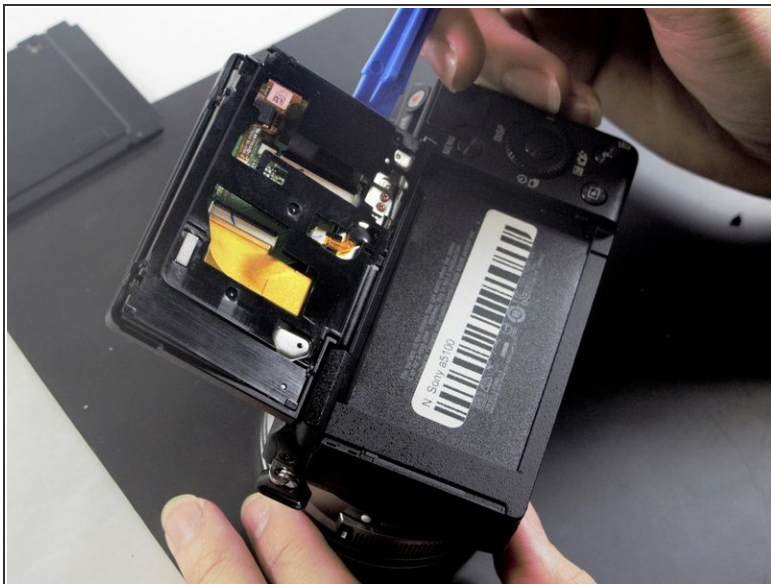
- Remove the two 2mm Phillips #00 screws on the back of the screen.
- Remove the two 2mm Phillips #00 screws on the top of the LCD screen.

Step 4



- Carefully pry open the back plate off the screen with an iFixit opening tool.
- ❗ If separating the plates is giving you trouble, aim for the notch at the bottom of the plate.

Step 5



- Carefully open the back plate of the screen.

To reassemble your device, follow these instructions in reverse order.