



# Nintendo Wii U Front Faceplate Replacement

Installing the Wii U Front Faceplate.

Written By: Kim Arre



# INTRODUCTION

Use this guide to install a new front faceplate for the Nintendo Wii U.



## TOOLS:

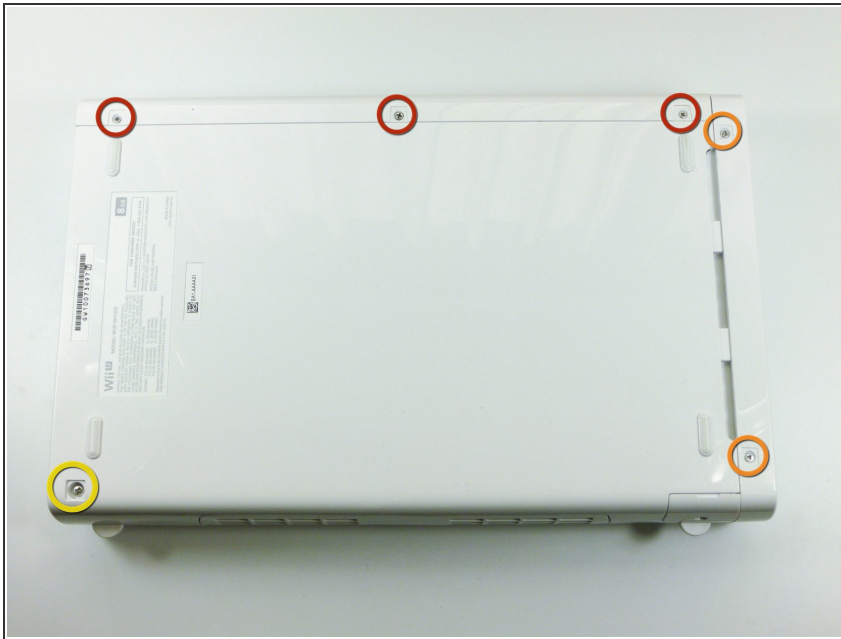
- [Phillips #0 Screwdriver](#) (1)
- [Phillips #00 Screwdriver](#) (1)
- [Tri-point Y0 Screwdriver](#) (1)
- [Y1 Tri-point Screwdriver](#) (1)



## PARTS:

- [Nintendo Wii U Faceplate](#) (1)

## Step 1 — Console Outer Case



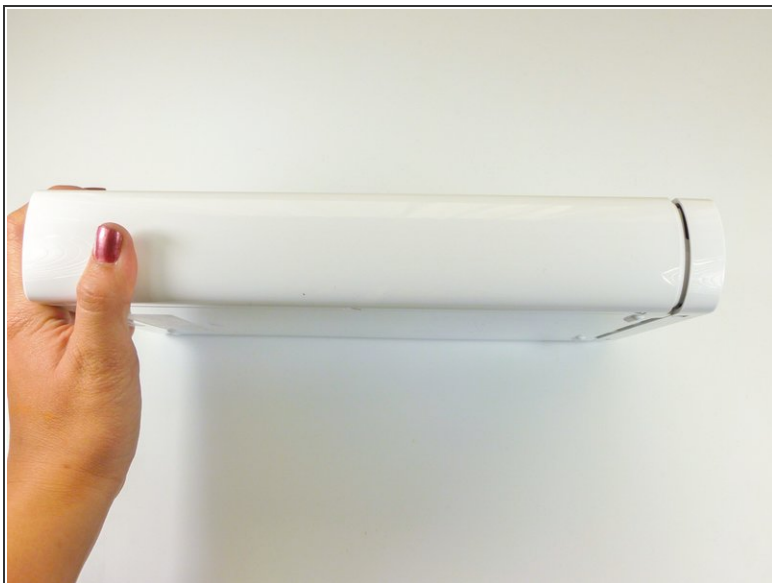
- With the bottom of the console facing up, remove the following 6 screws hidden underneath the white square stickers:
  - Three 5.1mm Phillips #000 screws
  - Two 6.1mm Tri-wing Y0 screws
  - One 13.2mm Tri-wing Y1 screw

## Step 2



- Rotate the console 180 degrees so that the exhaust vents are facing you.
- Remove the two 7.1mm Phillips #00 screws.

### Step 3



- On the side opposite of the exhaust vents, slide the cover faceplate towards the back of the console and pull upwards to release it.

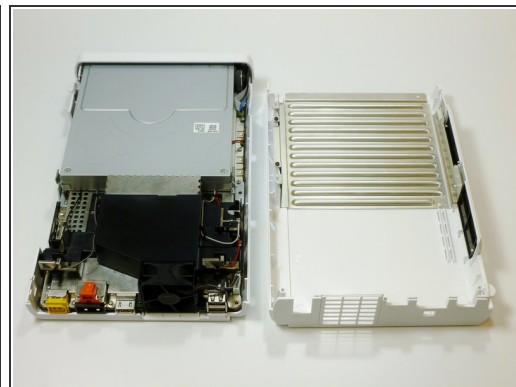
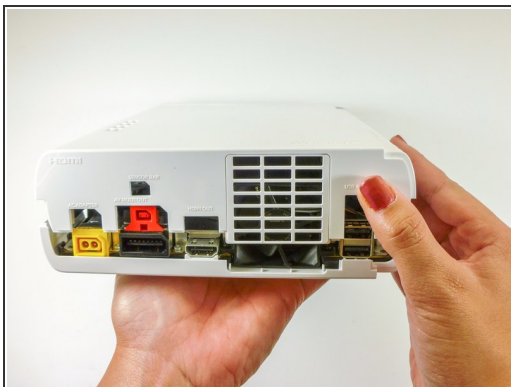
### Step 4



- On the bottom of the console beneath the previously removed faceplate, remove the three 13.2mm Tri-wing Y1 screws.



## Step 5



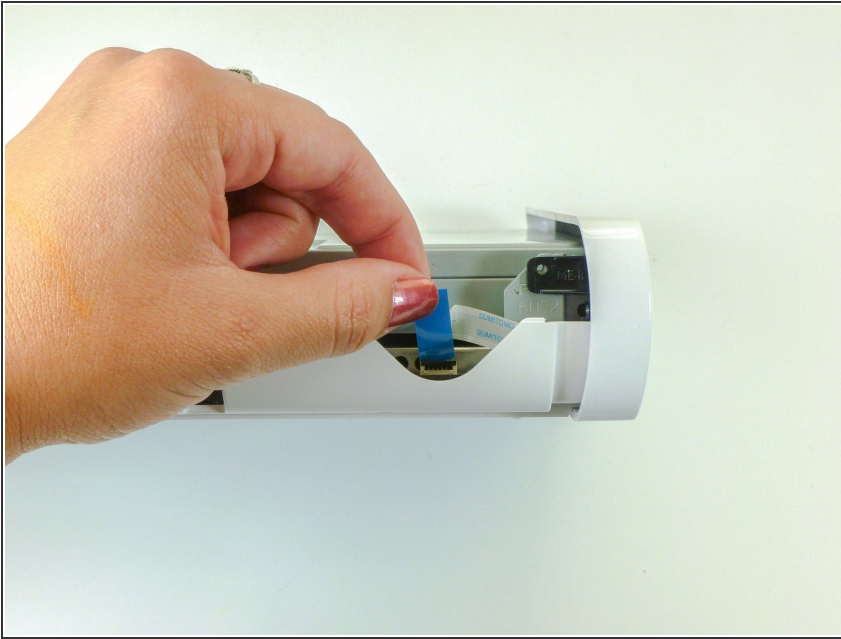
- On the back of the console, lift up and release the main top cover.

## Step 6 — Front Faceplate



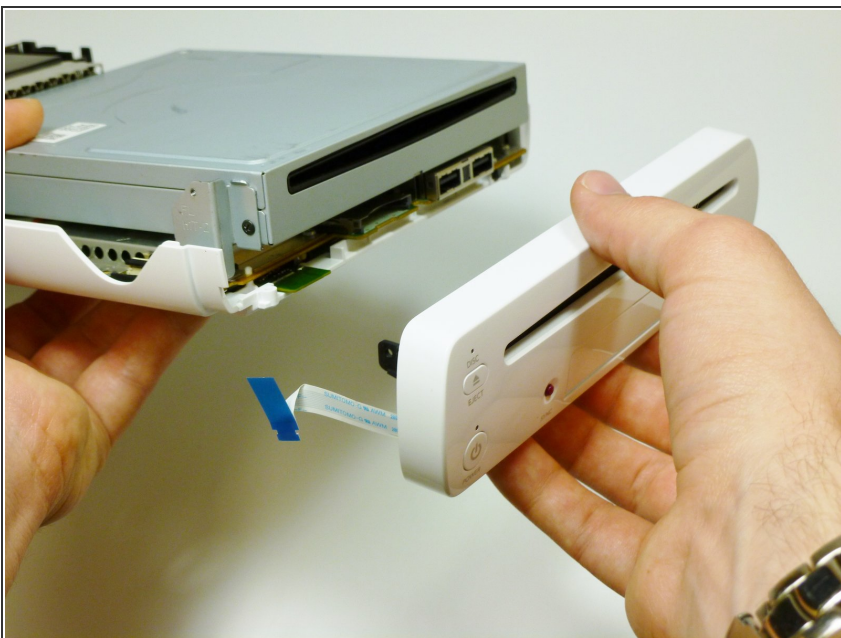
- Rotate the device so that the front plate is facing you.
- On each side of the console, remove the 3.5mm Phillips #0 screw connecting the DVD drive to the faceplate.

## Step 7



- Rotate the device so that the front plate is on the right side and the ribbon cable is visible.
- The ribbon cable is connected to the system by a latch which holds in the blue tab. Flip this latch up to unlock it.
- Lift up on the blue tab to release the ribbon cable.

## Step 8



- Remove the front faceplate.

To reassemble your device, follow these instructions in reverse order.