



Microsoft Surface Pro X SSD and SIM Card Door Removal

Use this guide to remove the Microsoft Surface...

Written By: Adam O'Camb



INTRODUCTION

Use this guide to remove the Microsoft Surface Pro X SSD and SIM card door, for access to the SSD or SIM card or to replace a damaged door.

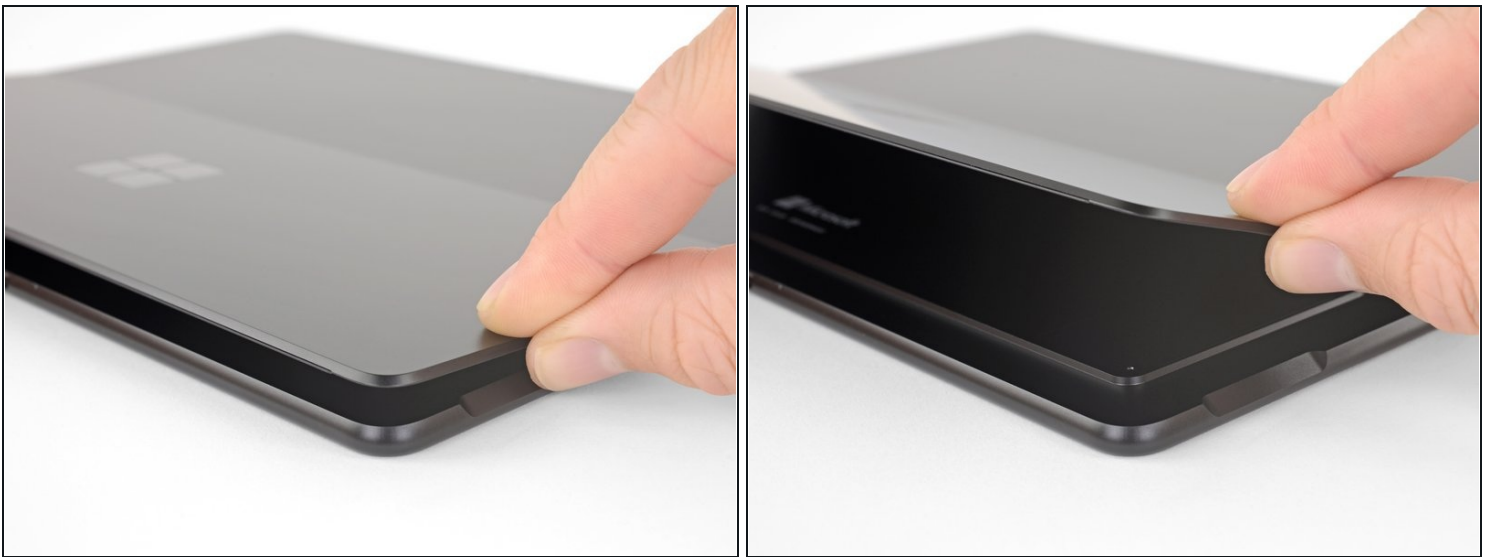
TOOLS:


[SIM Card Eject Tool](#) (1)


PARTS:

[Surface Pro X \(Model 1876-SQ1/SQ2\)](#)
[SSD Door - Genuine](#) (1)

Step 1 — Open the kickstand

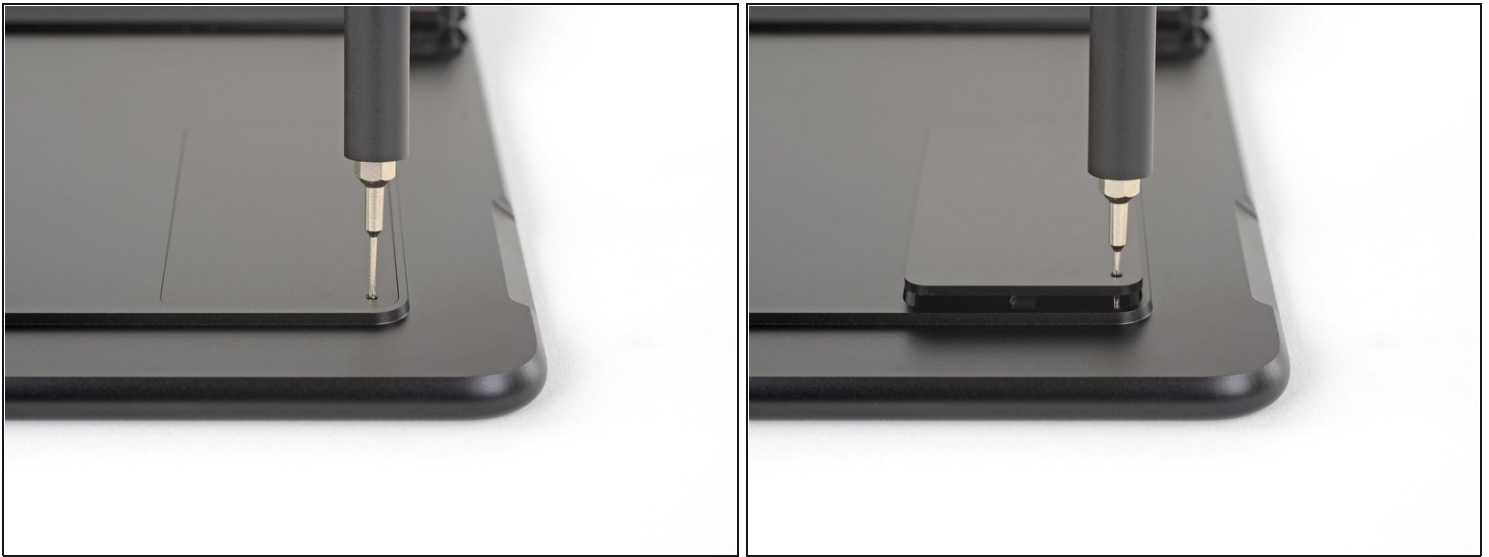


 Make sure your Surface Pro X is turned off, and laying screen-side down on a soft surface.

 After turning off your device, make sure to remove the SSD from the Surface before starting any repairs. This will disconnect the battery and prevent damage to the device.

- Lift the kickstand to at least a 90° angle, so that it is perpendicular to the Surface's screen. The further you open the hinge, the easier it is to access the SSD and SIM card door.

Step 2 — Open the SSD and SIM card door



- Insert a SIM card eject tool or a paperclip into the small hole in the bottom right corner of the SSD and SIM card door, located near the bottom right corner of the Surface.
- Press firmly to open the door.

Step 3 — Remove the SSD and SIM card door



- Lift the SSD and SIM card door and remove it from the Surface.
- ☑ When reinstalling the door, [first insert the end of the door with the small tab into the Surface just above the SSD](#), then lay the rest of the door down.

To reassemble your device, follow these instructions in reverse order.