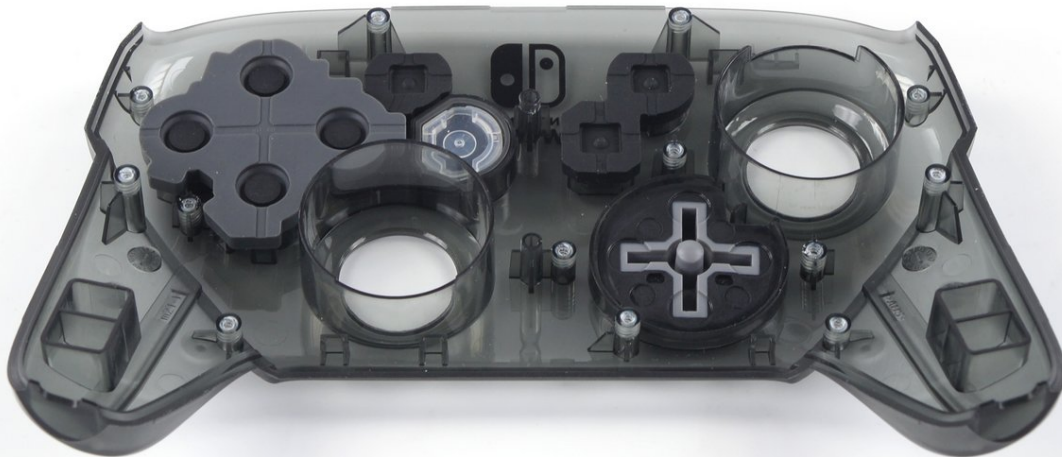




# Nintendo Switch Pro Controller Front Button Replacement

The front buttons on a Nintendo switch pro...

Written By: Daniel Tagalog



# INTRODUCTION

The front buttons on a Nintendo switch pro controller are supposed to be free flowing and have lightning fast response time. If your controller is not performing at the highest level it can then that means you will keep losing games. The controller has to be the best it can possibly be so that you can play up to your ultimate potential. If your front buttons are sticky, unresponsive, or will not press down all the way, use this guide to remove and replace your buttons. This guide requires a Phillips #00 screwdriver for screw removal.

---

## TOOLS:

[Tweezers](#) (1)

[iFixit Opening Picks \(Set of 6\)](#) (1)

[Phillips #00 Screwdriver](#) (1)

---

## Step 1 — Remove the screws



- Flip the controller over so the model stickers face the ceiling.
- Use a [JIS](#) #00 screwdriver to remove the two black 8.4 mm screws that secure the handles, located at the ends of the handles.

## Step 2 — Remove the handle covers



- Carefully remove the handle covers by pulling them away from the main body.

## Step 3 — Remove the screws



- Use a JIS #00 screwdriver to remove the four silver 6.8 mm screws that secure the clear back plastic cover.

## Step 4 — Unclip the plastic cover



- Carefully pry away the clear plastic cover using your fingernail.

## Step 5 — Remove the clear plastic cover



- Remove the clear plastic cover.

## Step 6 — Remove the battery



- Remove the lithium-ion battery by using a fingernail or plastic opening tool to pry it up on the left side.

 Only a small amount of force is needed.

## Step 7 — Remove the screws



- Use a Phillips #1 screwdriver to remove the five 5 mm screws from the back of the controller.
  - The two case screws above the handgrips and the single case screw below the battery bay have a shallow seat. These three screws can be easily removed.
  - The two case screws adjacent to the **ZR** and **ZL** shoulder buttons have a deep seat. Use an extension or a Phillips screwdriver with a longer shaft to reach these screws.



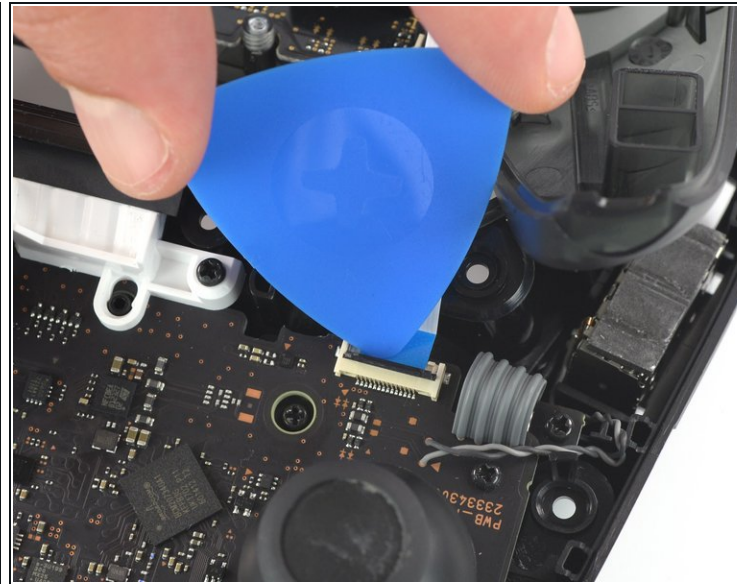
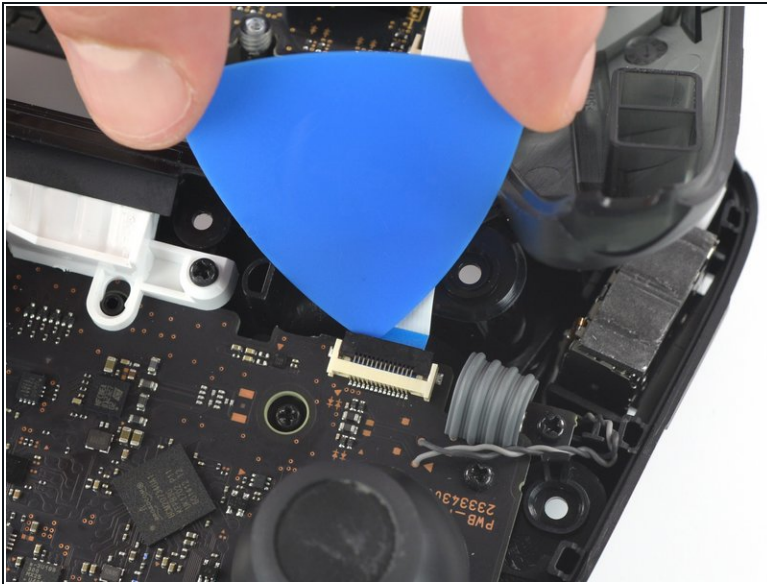
## Step 8



- Delicately take off the plastic cover from the controller.

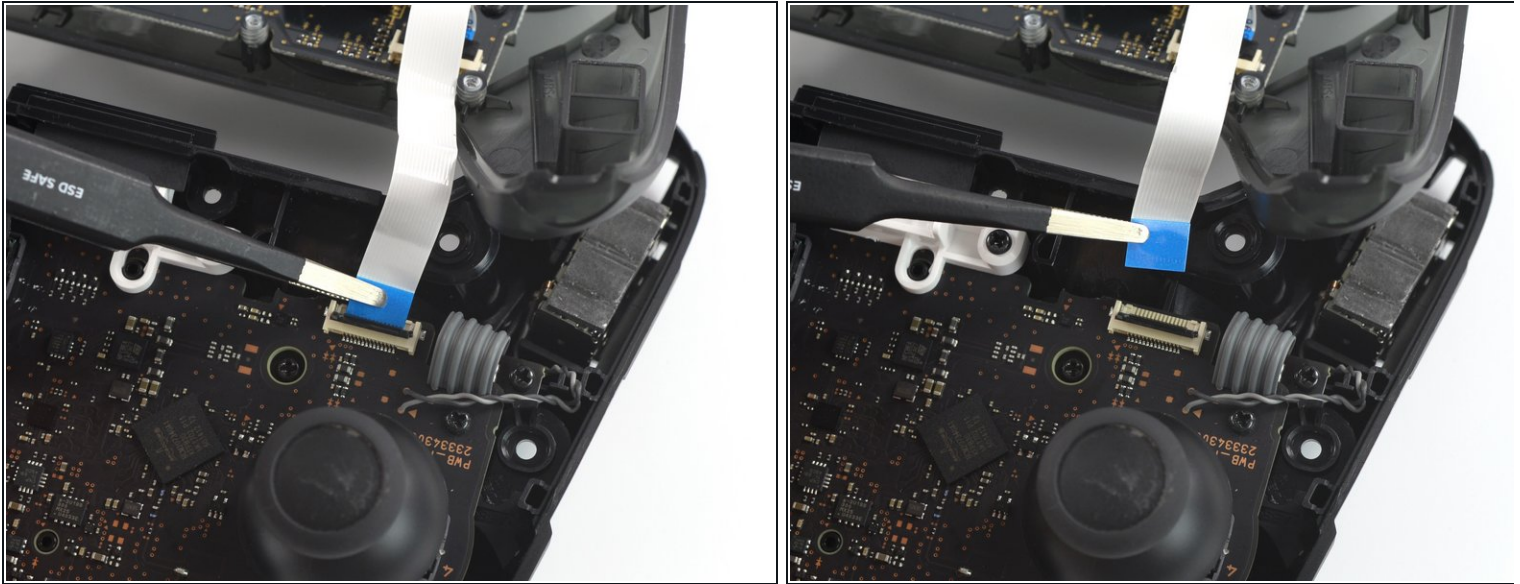
⚠ Do not completely remove the front cover just yet, as it is still attached to the motherboard via a white ribbon cable.

## Step 9 — Open the flap



- Use the tip of an opening pick to open the black flap of the ZIF connector by pushing it upwards.

## Step 10 — Disconnect the interconnect cable



- Use your fingers or a pair of blunt nose tweezers to disconnect the interconnect cable from its connector.

## Step 11 — Remove the front case



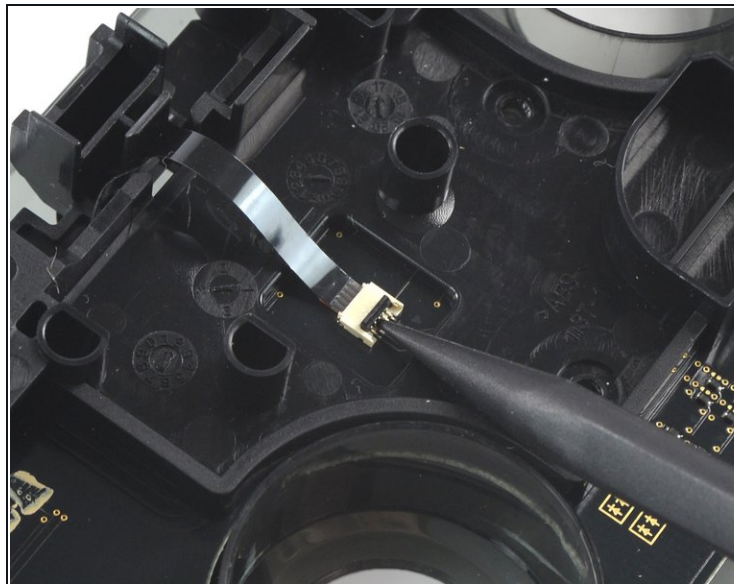
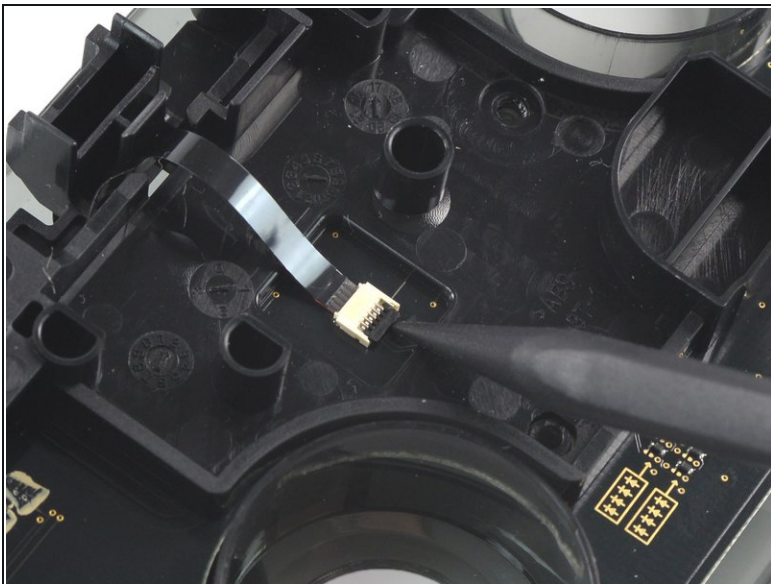
- Remove the front case.

## Step 12 — Remove the screws



- Remove the two 6.8 mm-long screws on the top circuit board using a Phillips screwdriver.

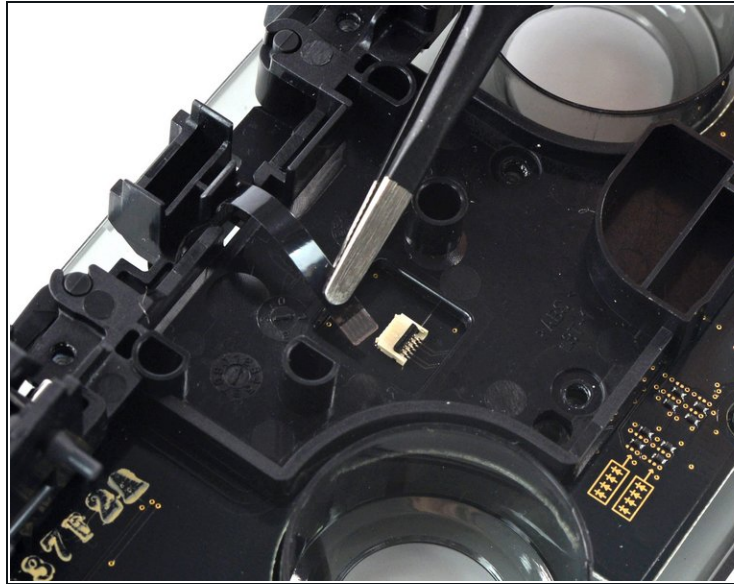
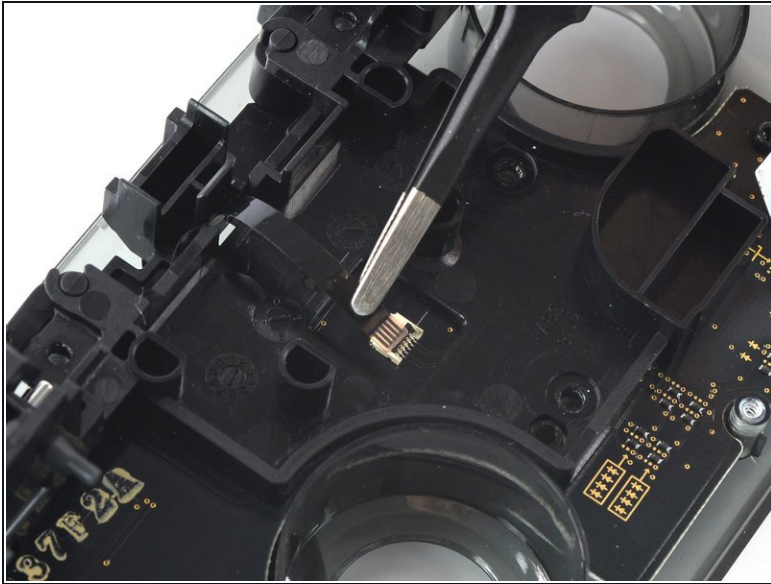
## Step 13 — Open the ZIF connector



- Use a spudger to flip up the locking tab on the ZIF connector.



## Step 14



- Remove the black ribbon cable from its connector.
- ⓘ Only a small amount of force should be needed to remove the ribbon cable.

## Step 15



- Remove the trigger buttons from the plastic cover.

## Step 16 — Unscrew front button board



- Use a Phillips screwdriver to remove the 5 mm-long screw securing the front button board.
- There may be an additional screw. If so, remove it now.

## Step 17 — Remove the board



- Remove the front button board.

To reassemble your device, follow these instructions in reverse order.