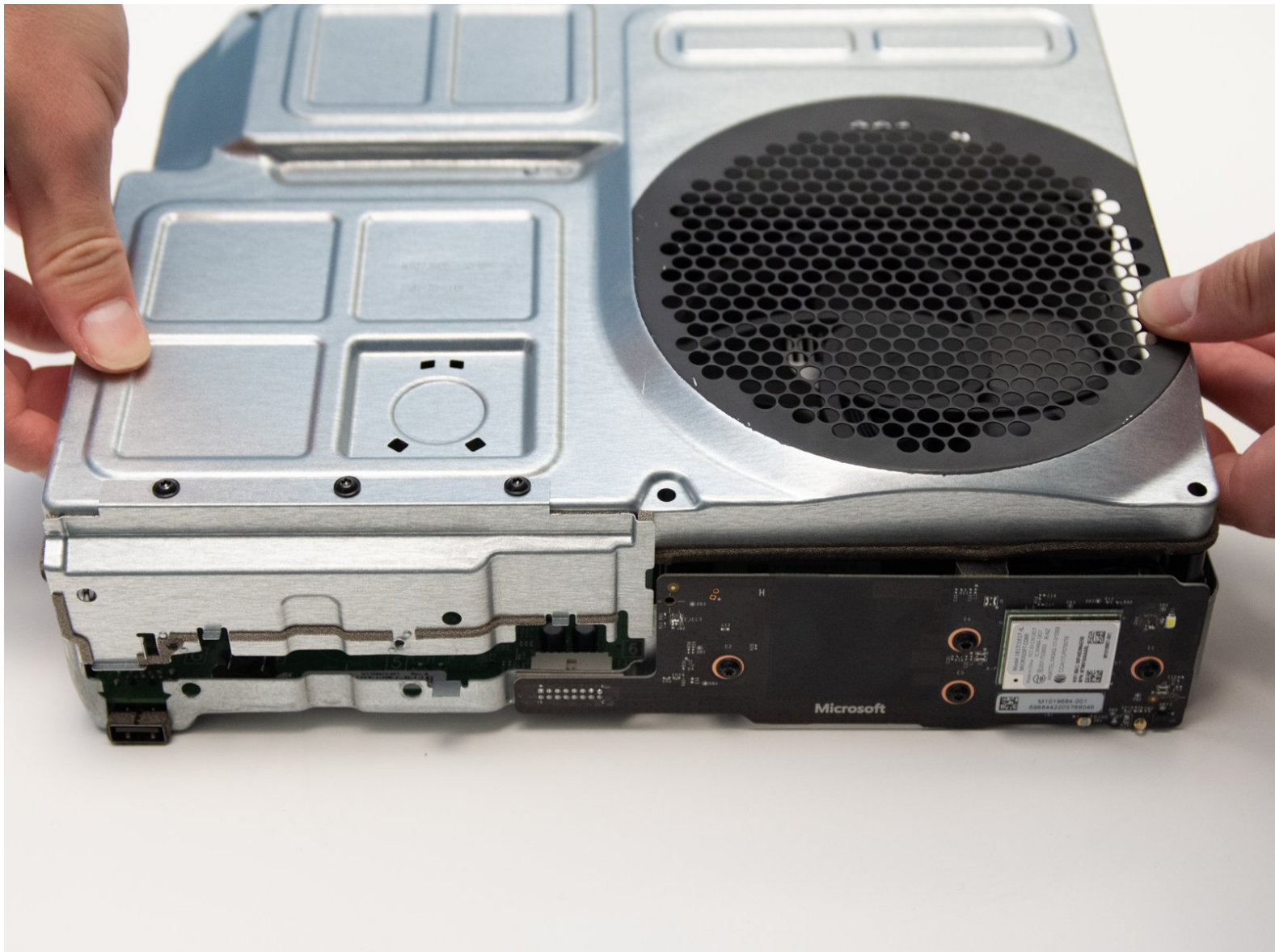




# Xbox One S All Digital Edition Top Metal Shield Replacement

This guide shows how to remove top metal case of the Xbox One S All Digital Edition.

Written By: Jules Hajjar



---

## INTRODUCTION

Access all hardware inside the Xbox One S All Digital Edition (Model 1681) metal casing after completing this step.

This step shows how to carefully separate the top metal casing from the bottom. If there are noises from the fan, the metal casing could be the [problem](#), prohibiting fan movement. Disconnect all cables prior to disassembly.



### TOOLS:

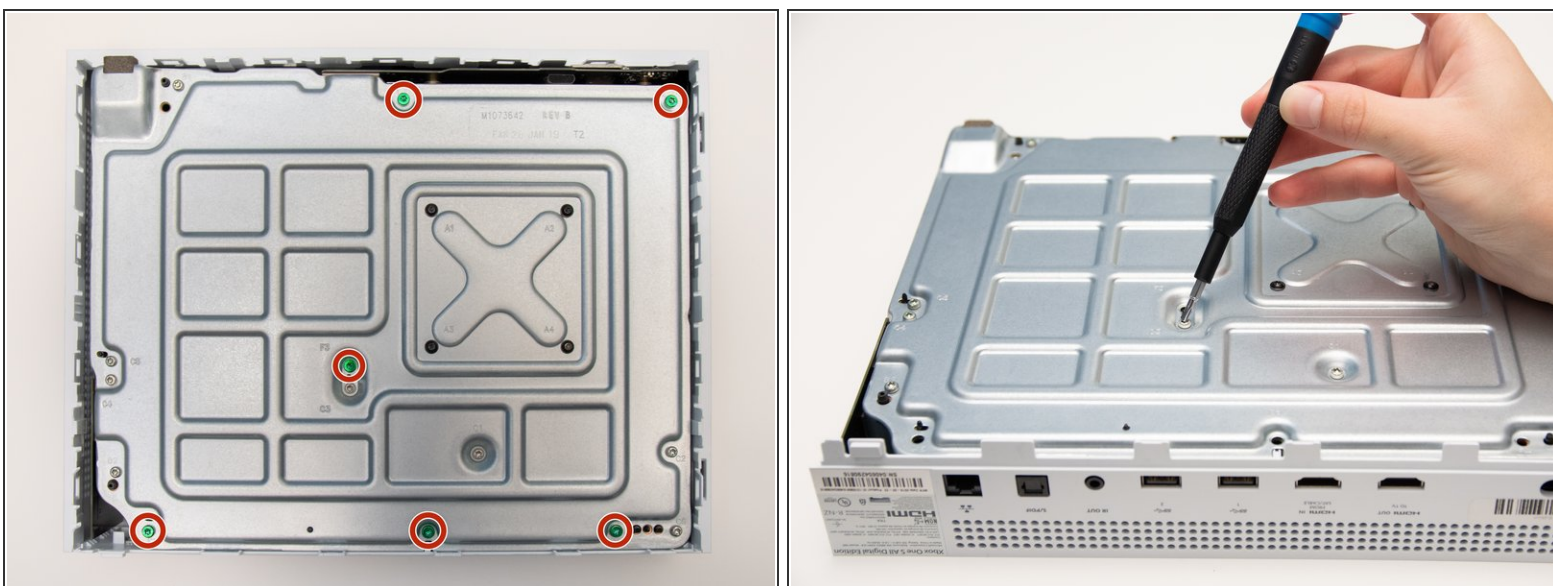
- [iFixit Opening Tools](#) (1)
  - [TR10 Torx Security Screwdriver](#) (1)
  - [T8 Torx Security Bit Screwdriver](#) (1)
-

## Step 1 — Plastic Enclosure



- Position the iFixit Opening Tool's riveted edge in between the top and bottom cover of the plastic enclosure.
- Apply downward pressure on the iFixit Opening Tool until the security clip unlocks.
- Repeat on different points of the plastic enclosure until the bottom cover is removed.

## Step 2



- Remove the six 50 mm green screws (labeled F1-F6) from the metal chassis using a Torx 10 screwdriver.
- ⓘ These screws hold the top cover of the plastic enclosure to the chassis.

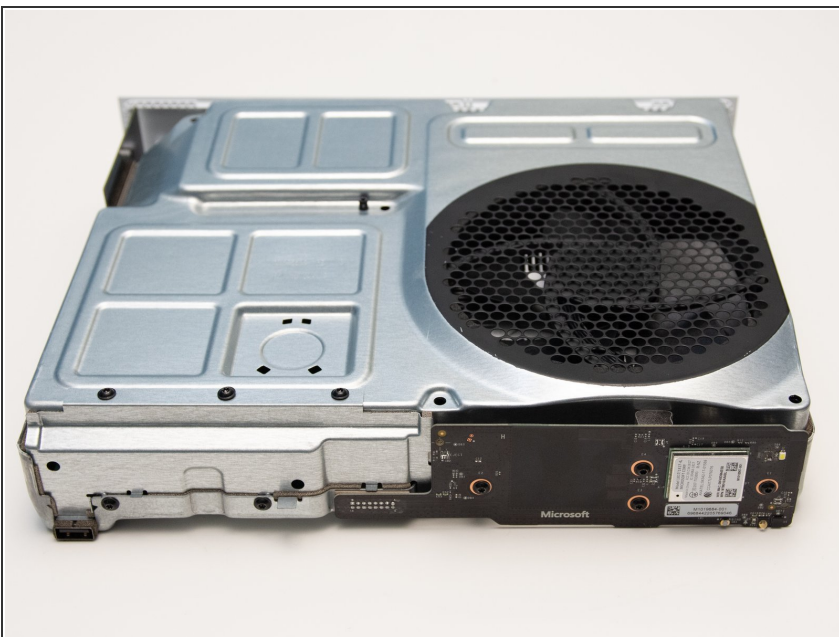


## Step 3



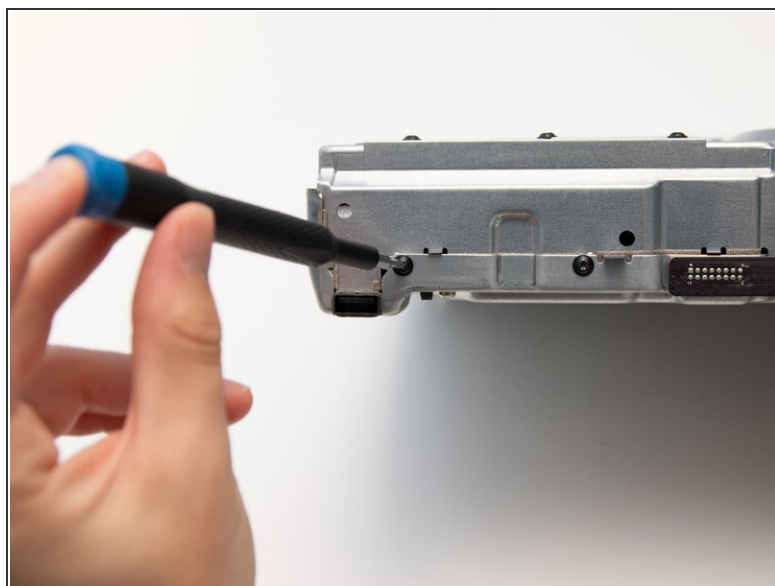
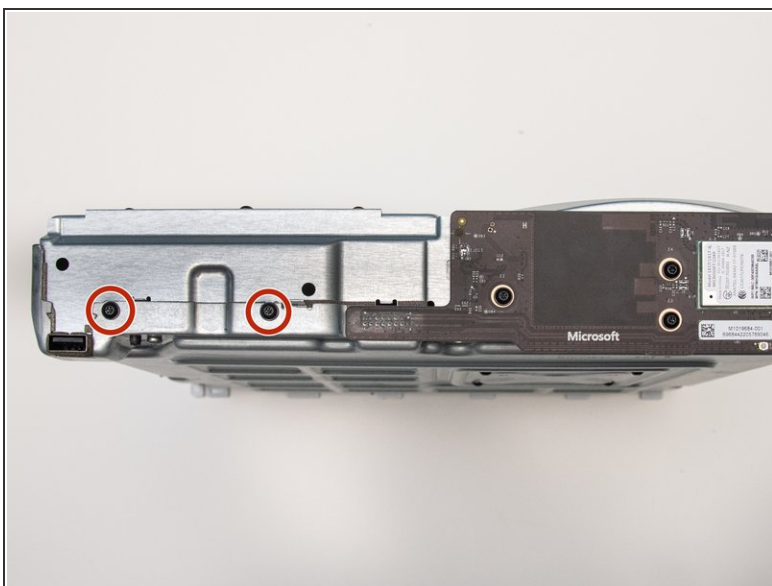
- Apply pressure to peel off the sides of the casing.
- Separate the metal chassis from the top cover, lifting the back of the chassis up and away from the top cover.
- *i* The plastic back panel is meant to stay attached to the metal chassis.

## Step 4



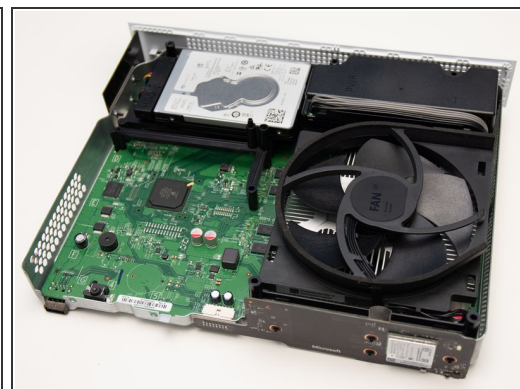
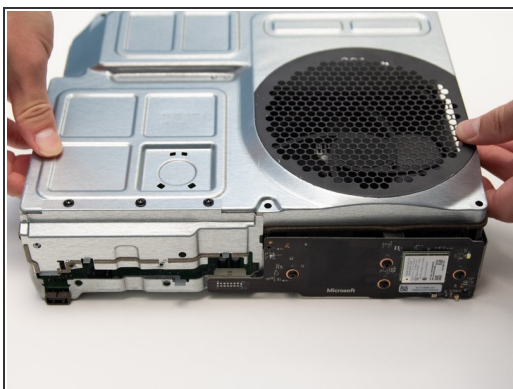
- Flip the metal enclosure so that the fan cover is on top.

## Step 5 — Top Metal Shield



- Remove the two 15mm screws from the front panel using the Torx T8 screwdriver.

## Step 6



- Carefully slide the top metal case off the frame.
- ⓘ This may require shifting the case side to side as you slide up.

To reassemble your device, follow these instructions in reverse order.