



# Game Boy Color LCD Display Replacement

The LCD Display is the screen that displays...

Written By: Ajmal Puyehgar



# INTRODUCTION

The LCD Display is the screen that displays images from the Game Boy Color. This guide details how to disassemble and install an LCD Display.

## TOOLS:

Phillips #1 Screwdriver (1)

Spudger (1)

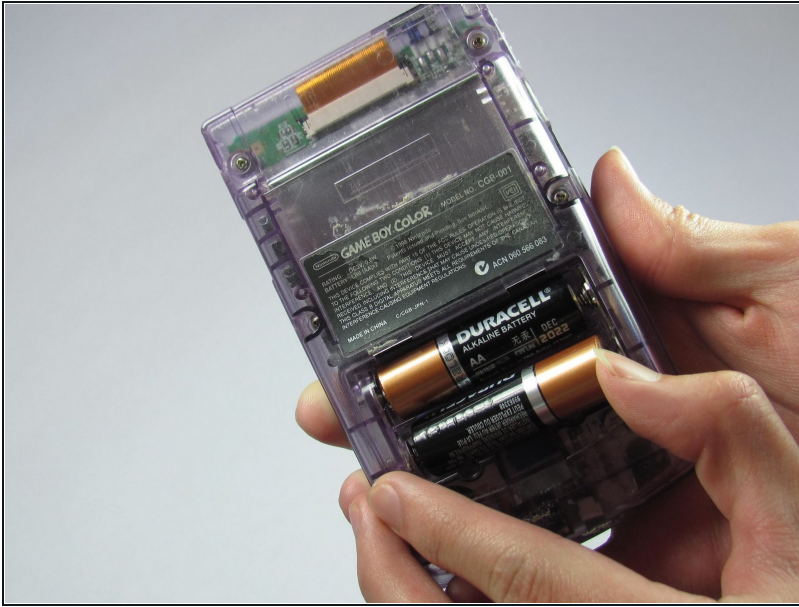
Tri-point Y0 Screwdriver (1)

## Step 1 — Battery



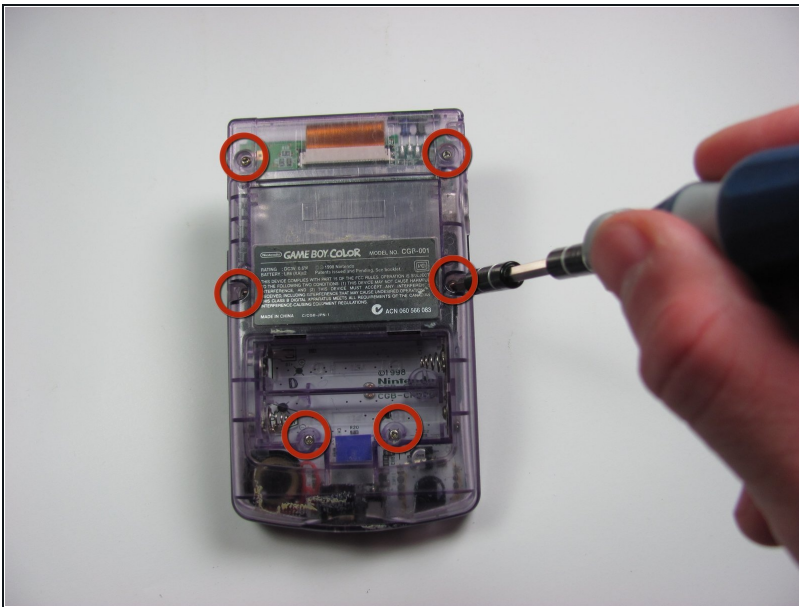
- Locate the battery compartment on the back of the Game Boy Color.
- Push down on the tab and hinge the cover downwards and outwards to remove the battery cover.

## Step 2



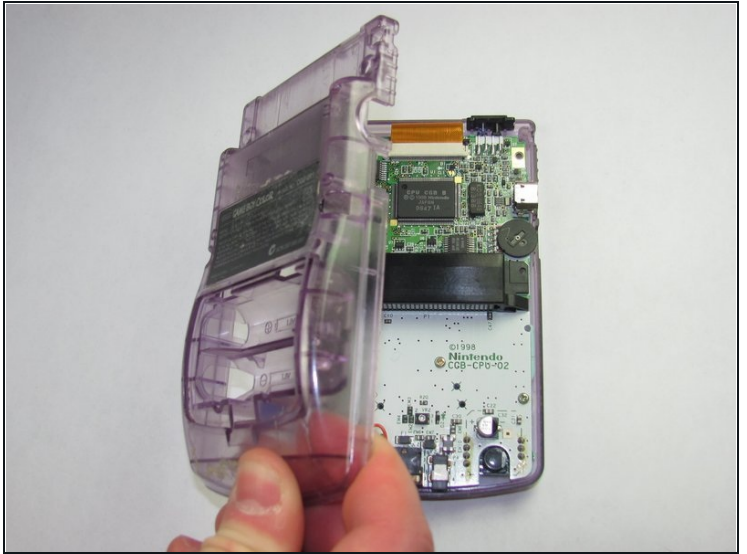
- Remove the batteries from the battery compartment.

## Step 3 — Back Housing



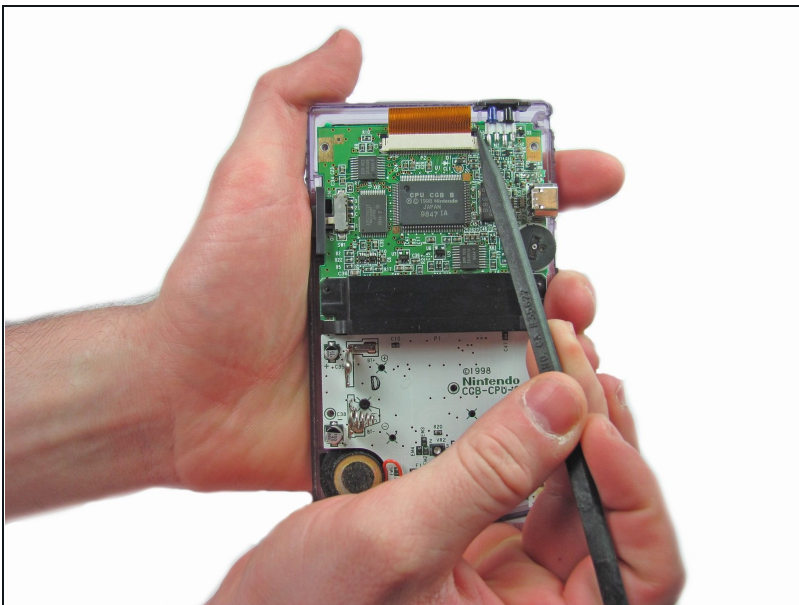
- Using a Y1 screwdriver, remove the six screws on the back of the device as pictured. The bottom two screws are located inside of the battery compartment.

## Step 4



- Gently lift and separate the back housing from the rest of the device. Now you've got the back housing out!

## Step 5 — LCD Ribbon Cable



- Push up on the tabs on either side of the ribbon with a spudger.

## Step 6



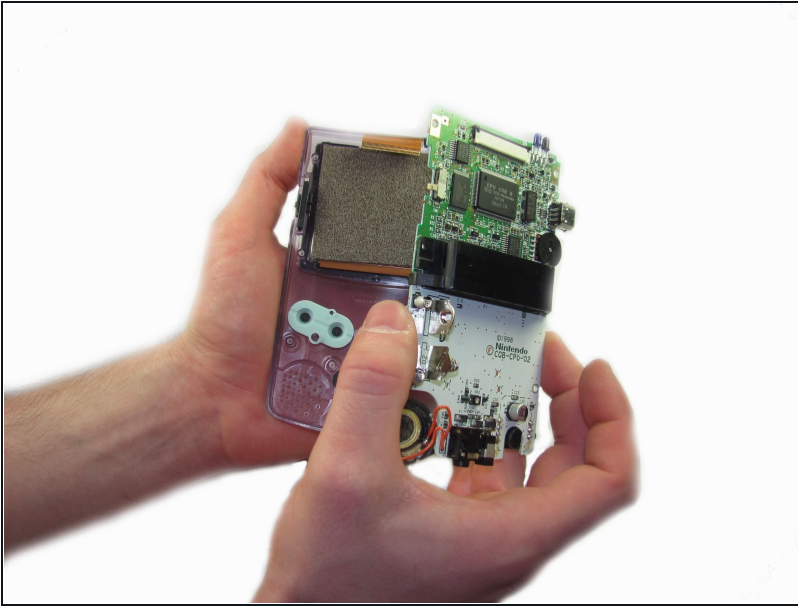
- Gently remove the ribbon cable from the port

## Step 7 — Motherboard



- Using the Phillips #1 screwdriver, remove the 3 screws shown in the picture.

## Step 8



- Gently lift the motherboard from the front housing.

## Step 9 — LCD Display



- Gently pry and lift the LCD Display from the front panel.
  - ① Twisting the front casing may help gain more leverage.

To reassemble your device, follow these instructions in reverse order.