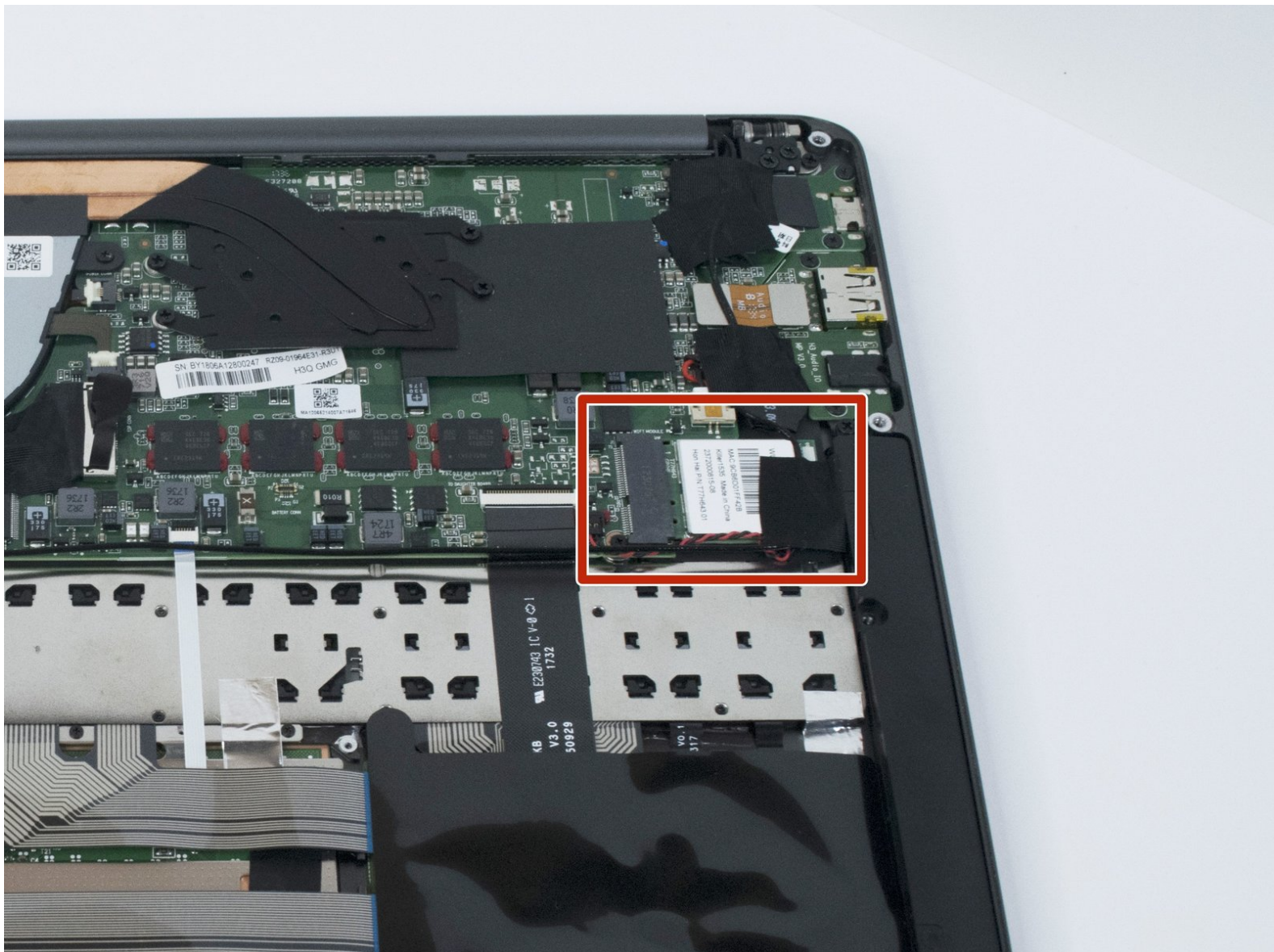




Razer Blade Stealth 2017 WiFi Card Replacement

This guide outlines how to replace the WiFi card in the Razer Blade Stealth 2017.

Written By: Helene Willits



INTRODUCTION

This guide outlines how to replace the WiFi card if it does not connect to the internet. If the computer does not detect any WiFi connections, the WiFi card may be damaged. Be sure there is a connection available and working before replacing the WiFi card. Some iFixit tools are required for this replacement.



TOOLS:

- [T5 Torx Screwdriver](#) (1)
 - [Phillips #00 Screwdriver](#) (1)
 - [Small Plastic Spudger](#) (1)
-

Step 1 — Battery



- i Before you begin, be sure to turn off your laptop and discharge the battery down to 25%.
- Use a Torx T5 screwdriver to remove the eight, 3mm screws on the bottom cover of the laptop.
- i Whenever you remove screws from the device, remember to save and label them.

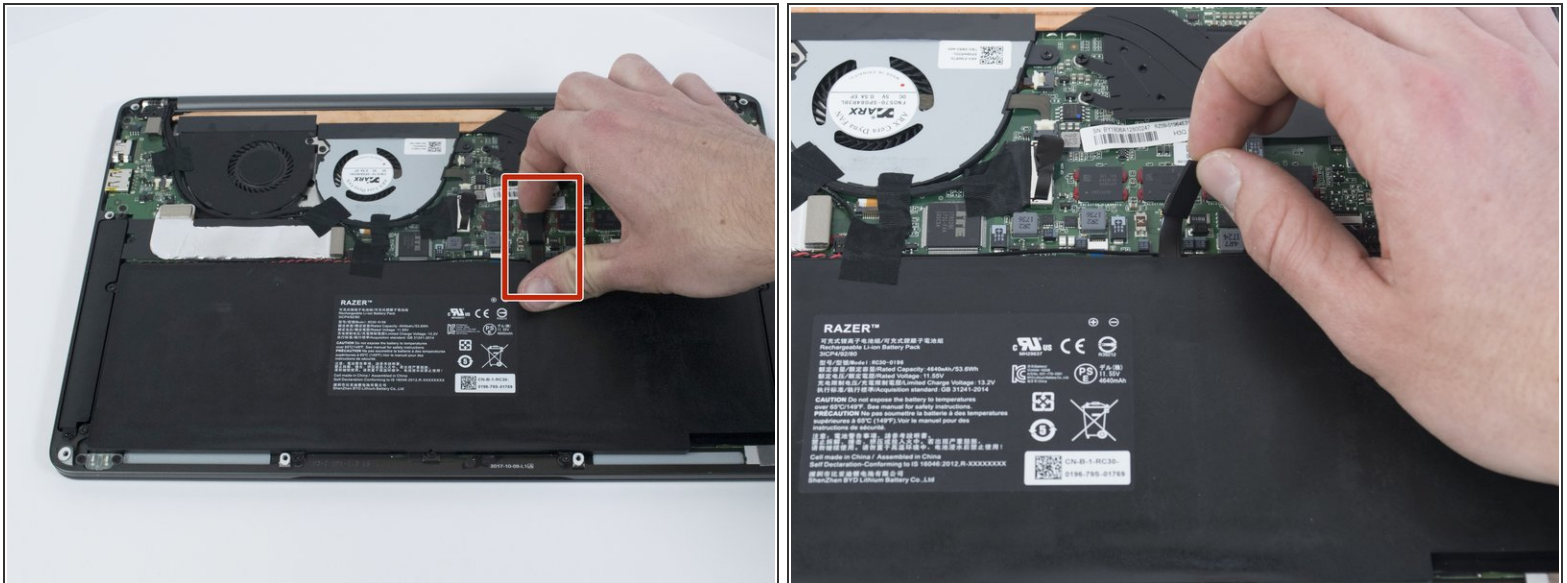
Step 2



- Remove the bottom cover of the laptop by sliding it away from the hinge.

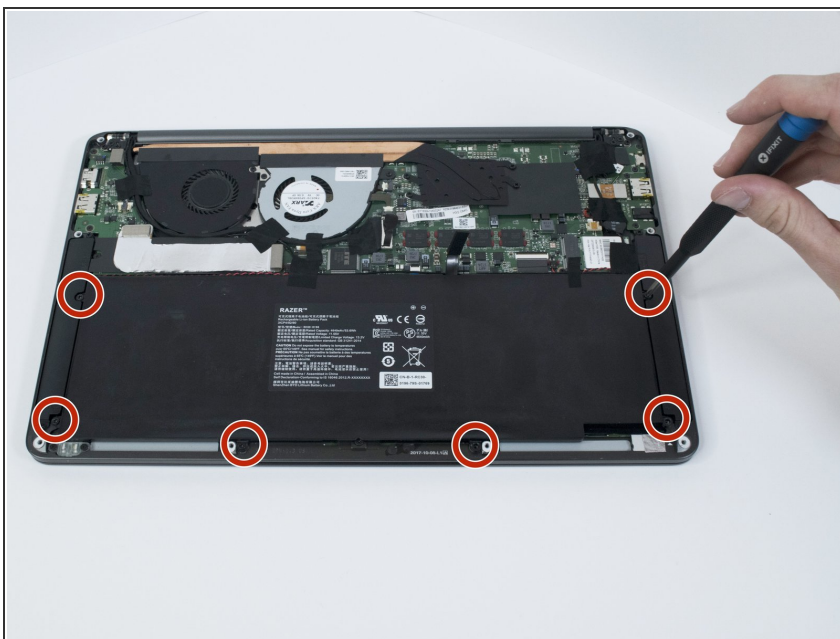
⚠ Do not force the cover up!

Step 3



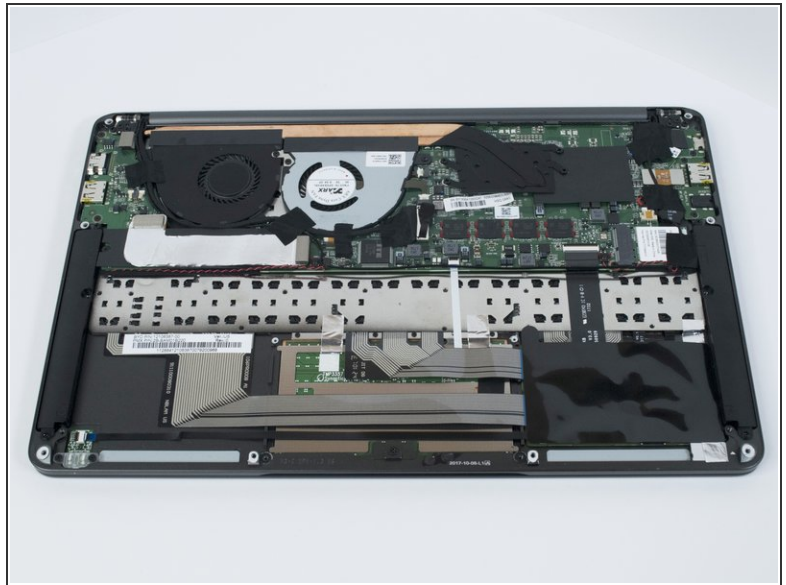
- Use your fingernail to pry up and disconnect the battery from the motherboard.

Step 4



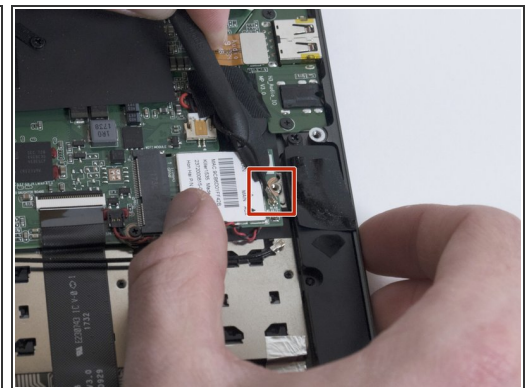
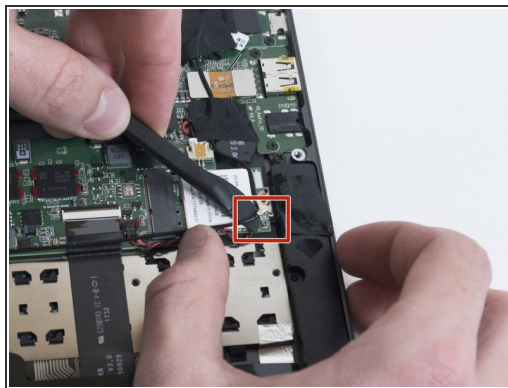
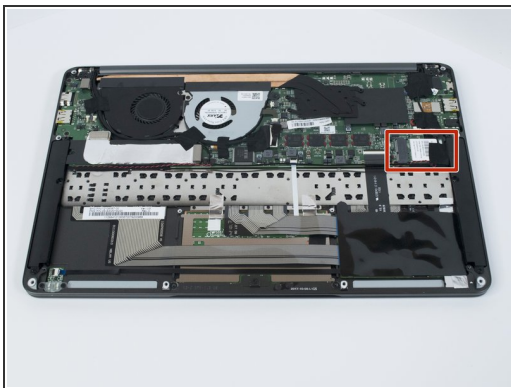
- Use a Phillips #00 screwdriver to remove the six, 5mm screws securing the battery.

Step 5



- i Remove any tape attached to the battery.
- Use the plastic spudger to pry out the battery.

Step 6 — WiFi Card



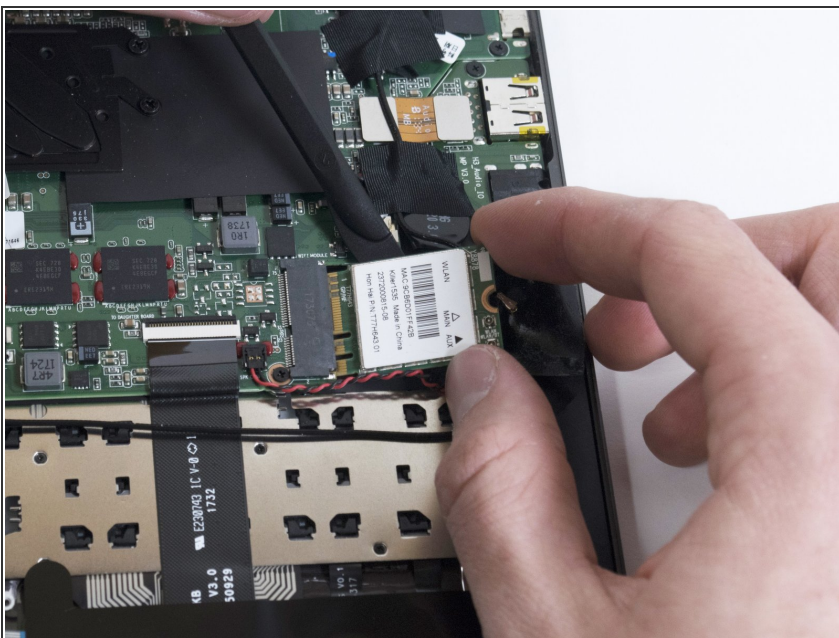
- i Remove any tape attached to the Wifi card.
- Use a plastic spudger to disconnect the two coaxial antennae connectors and expose the WiFi card.

Step 7



- Use a Phillips #00 screwdriver to remove the single, 2 mm screw from the WiFi card.

Step 8



- Remove the WiFi card from the motherboard by sliding it out at an angle.

To reassemble your device, follow these instructions in reverse order.