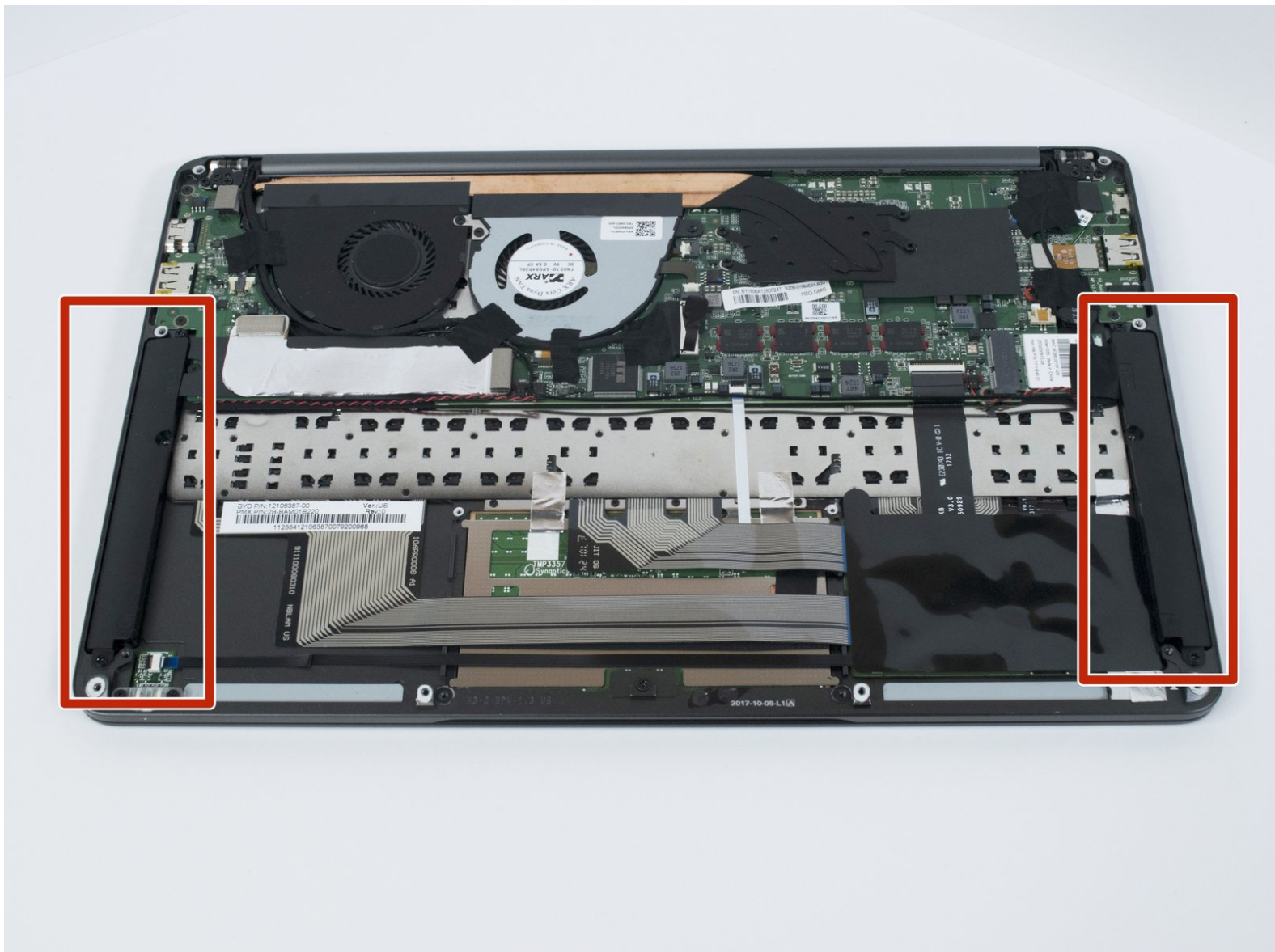




Razer Blade Stealth 2017 Speaker Replacement

This guide outlines how to replace a broken speaker in the Razer Blade Stealth 2017.

Written By: Helene Willits



INTRODUCTION

This guide outlines how to replace the speakers in your Razer Blade Stealth if they are broken or malfunctioning. If the speakers are broken, the sound may be warped, unusually quiet, or have a rattling sound. Before replacing, be sure to look at the “Razer Blade Stealth (2017) Troubleshooting” guide for help with various speaker issues. This guide requires some iFixit tools.



TOOLS:

- [Phillips #00 Screwdriver](#) (1)
- [T5 Torx Screwdriver](#) (1)
- [Small Plastic Spudger](#) (1)
- [Tweezers](#) (1)

Step 1 — Battery



- ⓘ Before you begin, be sure to turn off your laptop and discharge the battery down to 25%.
- Use a Torx T5 screwdriver to remove the eight, 3mm screws on the bottom cover of the laptop.
- ⓘ Whenever you remove screws from the device, remember to save and label them.

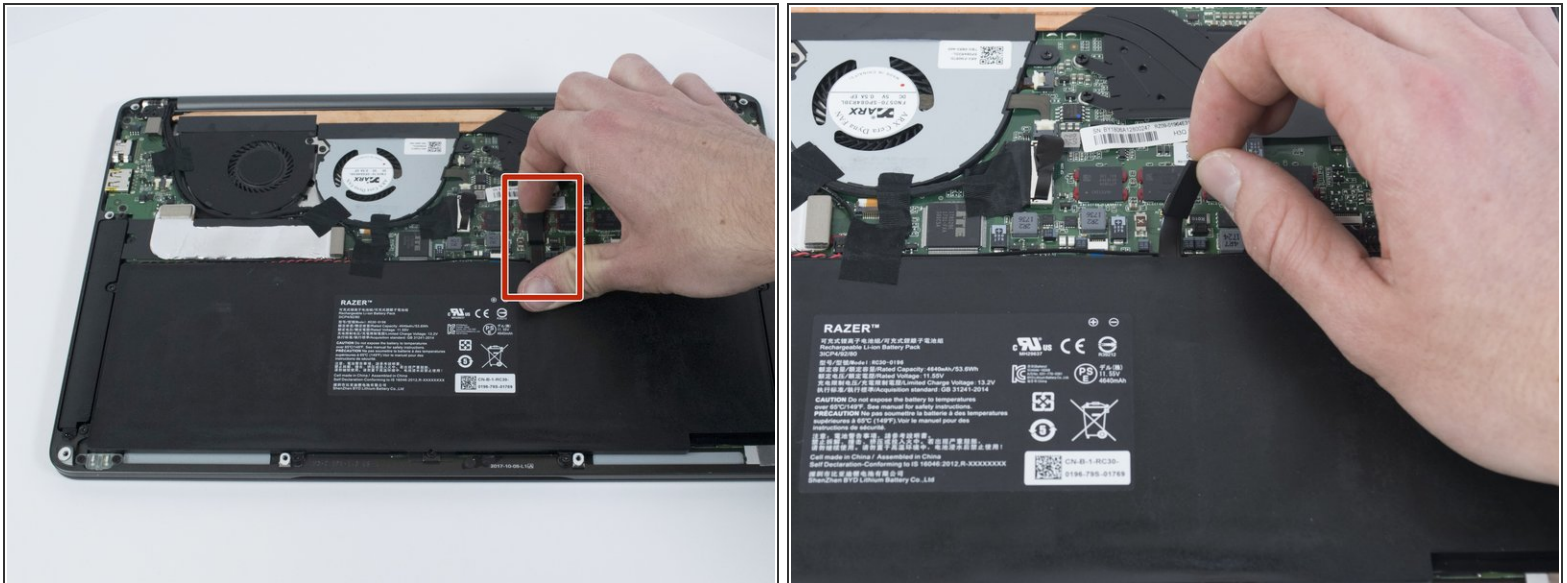
Step 2



- Remove the bottom cover of the laptop by sliding it away from the hinge.

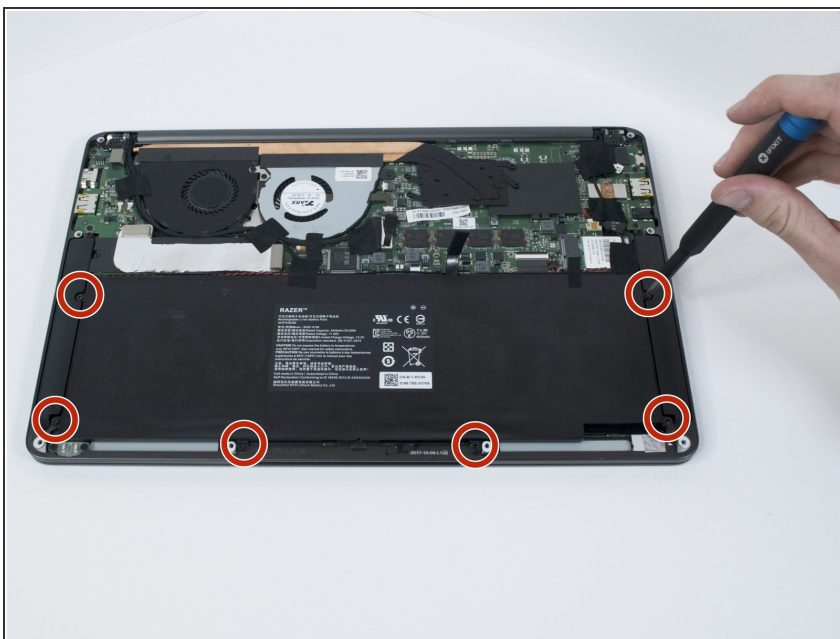
⚠ Do not force the cover up!

Step 3



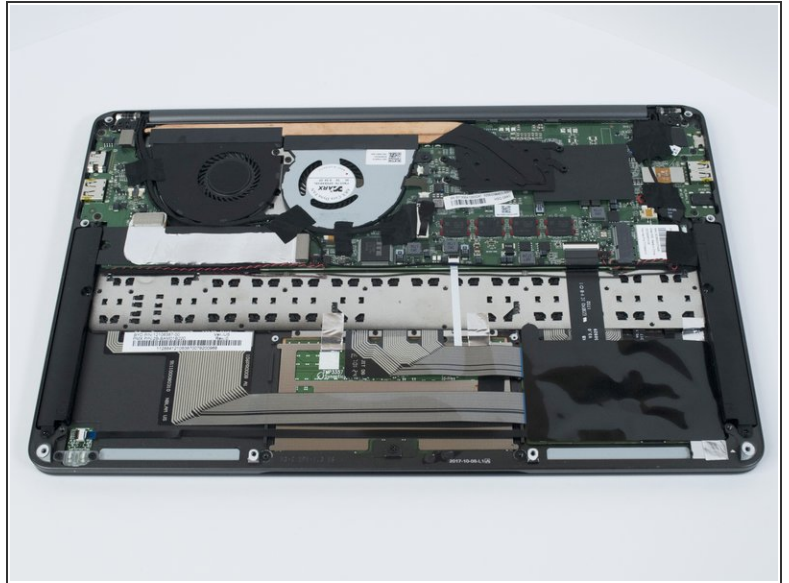
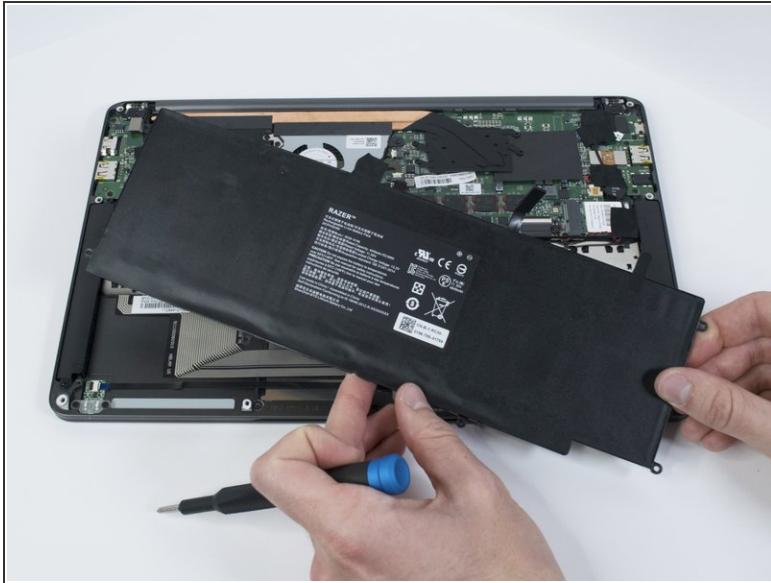
- Use your fingernail to pry up and disconnect the battery from the motherboard.

Step 4



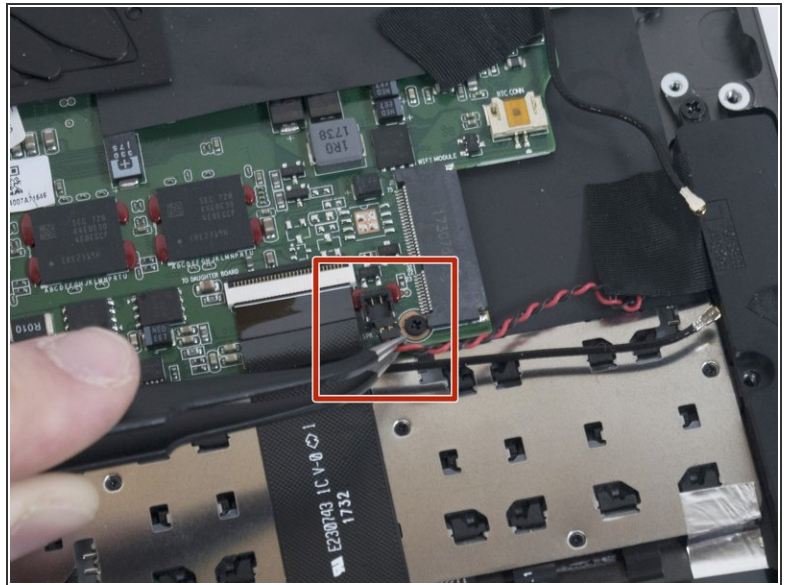
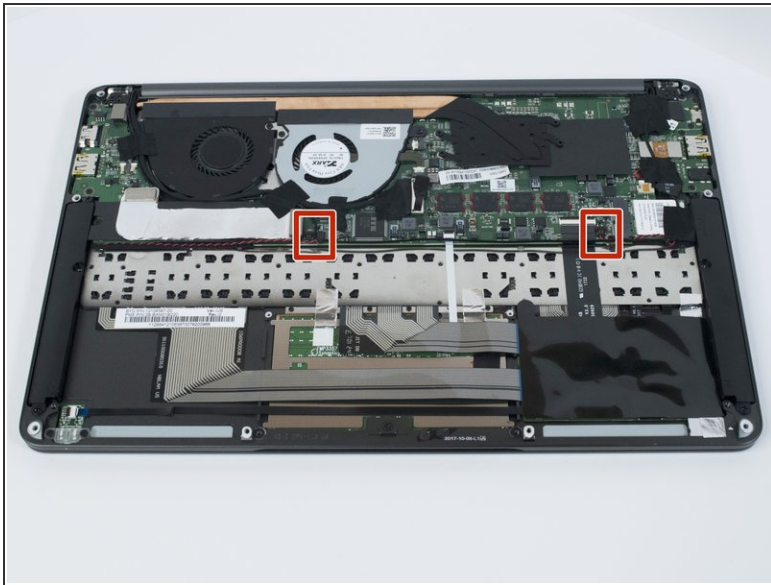
- Use a Phillips #00 screwdriver to remove the six, 5mm screws securing the battery.

Step 5




- ⓘ Remove any tape attached to the battery.
- Use the plastic spudger to pry out the battery.

Step 6 — Speaker

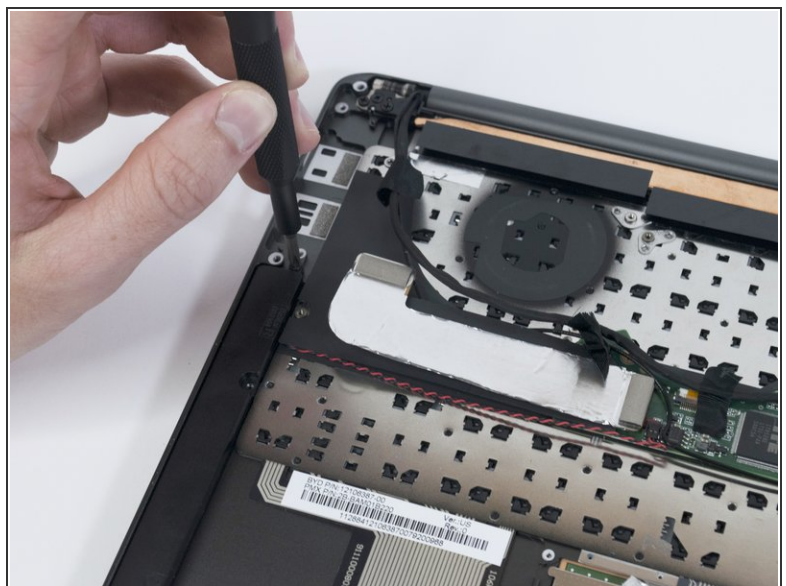
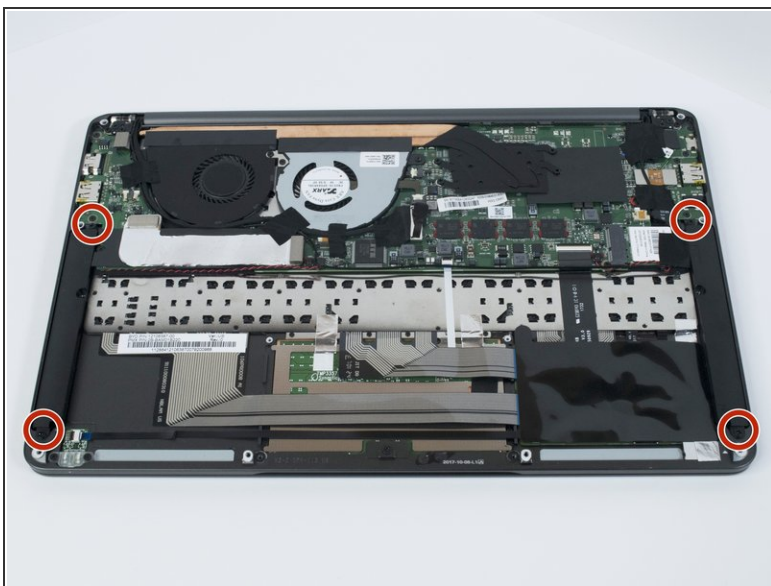


- Use tweezers to disconnect the red and black speaker cables by lifting up on the pin-header.

 The same process is used for both speaker connections.

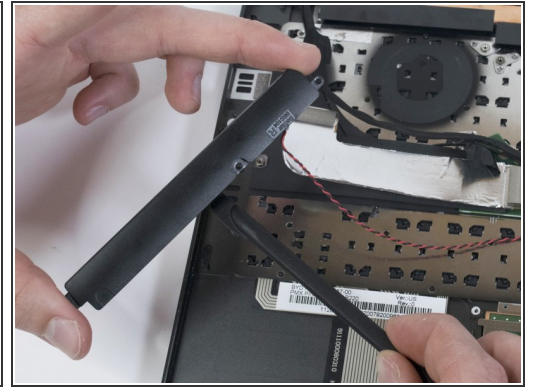
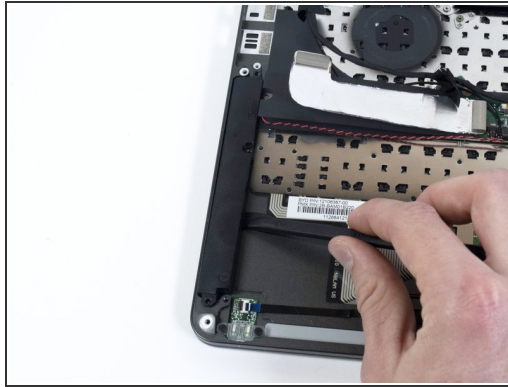
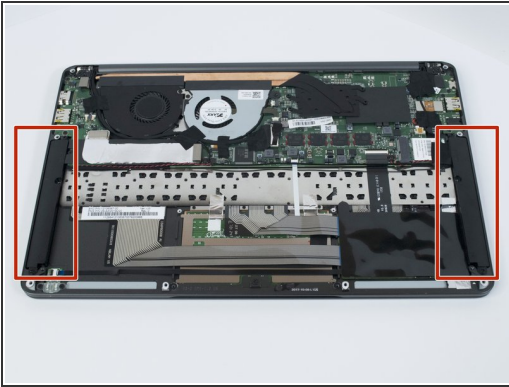
 Do not pull horizontally on the wires!

Step 7



- Use a Phillips #00 to remove the two, 4mm screws on each speaker.

Step 8



- Use a plastic spudger to pry the speaker(s) away from the chassis.
- ⓘ The speakers are glued to the chassis, making them difficult to remove.
- ⓘ The same process is used for both speakers.

To reassemble your device, follow these instructions in reverse order.