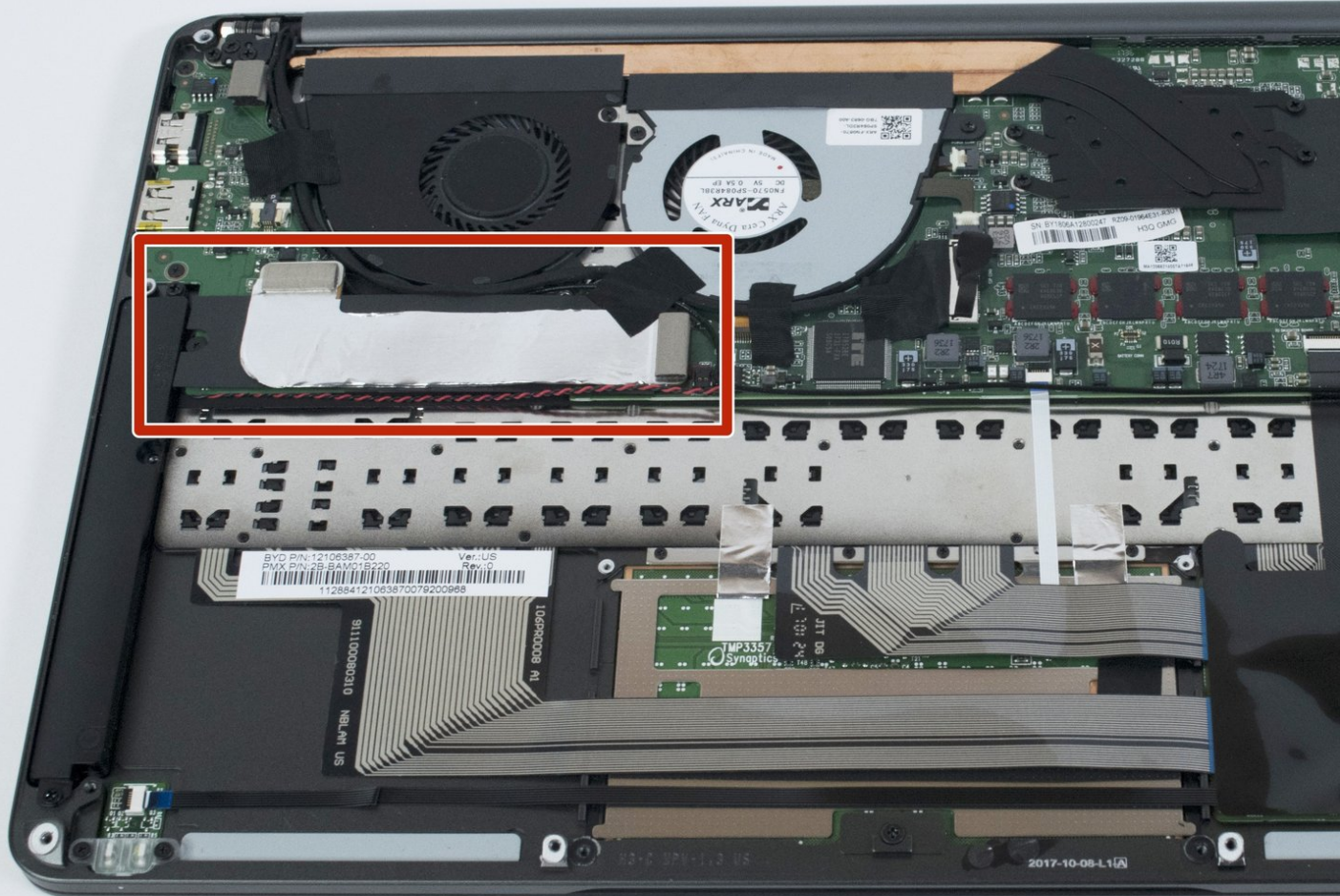




Razer Blade Stealth 2017 SSD Replacement

This guide outlines how to replace the SSD on...

Written By: Helene Willits



INTRODUCTION

This guide outlines how to replace the SSD on your Razer Blade Stealth if it damaged or non-functional. If the computer presents a blank screen and does not boot up, the SSD may be damaged. If you want to increase the SSD storage on the computer, swap the SSD using this guide. Some iFixit tools are required for this replacement.



TOOLS:

- [T5 Torx Screwdriver](#) (1)
- [Spudger](#) (1)
- [Phillips #00 Screwdriver](#) (1)



PARTS:

- [Crucial P3 NVMe PCIe M.2 2280SS SSD - solid performance, switching from HDD or SATA to NVMe™](#) (1)
- [Crucial P3 Plus NVMe PCIe M.2 2280SS SSD - fast Gen4 NVMe™ storage for data-intensive applications](#) (1)
- [Crucial P5 Plus NVMe PCIe M.2 2280SS SSD - professionals, creatives, and hardcore gamers](#) (1)

Step 1 — Battery



- ⓘ Before you begin, be sure to turn off your laptop and discharge the battery down to 25%.
- Use a Torx T5 screwdriver to remove the eight, 3mm screws on the bottom cover of the laptop.
- ⓘ Whenever you remove screws from the device, remember to save and label them.

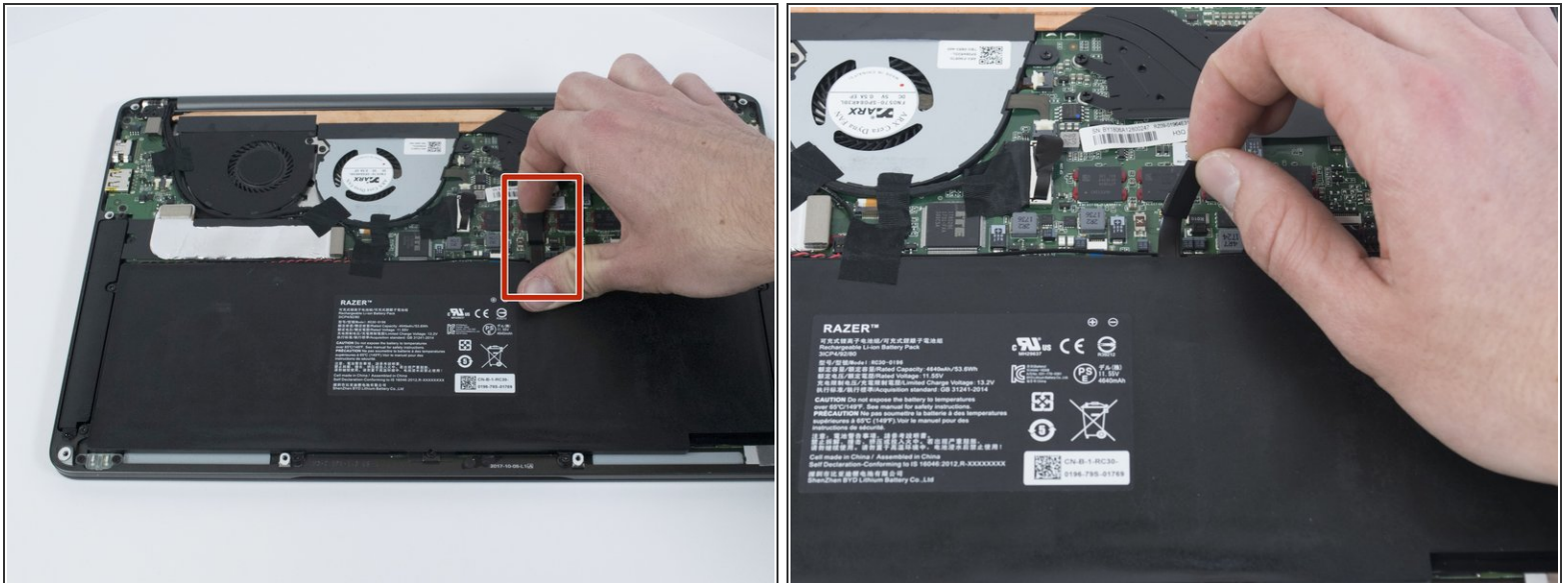
Step 2



- Remove the bottom cover of the laptop by sliding it away from the hinge.

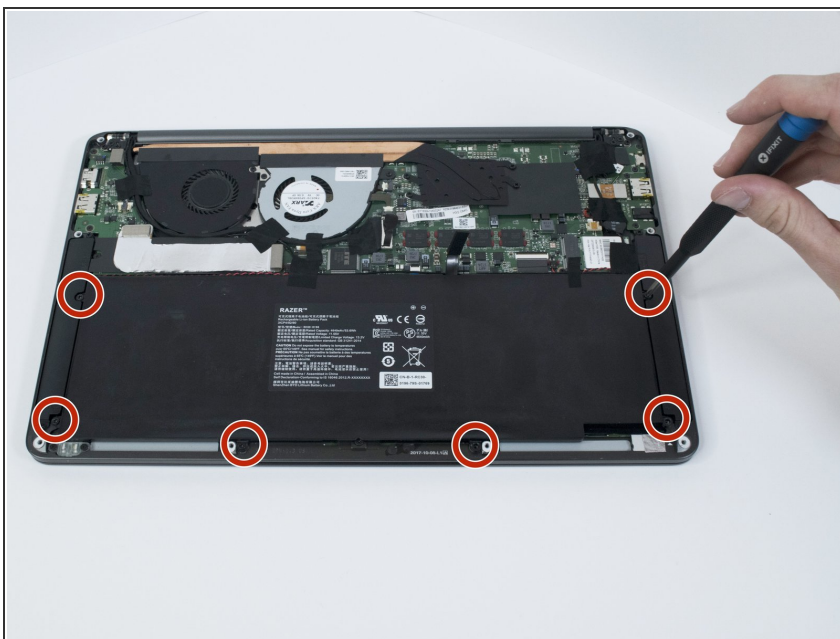
⚠ Do not force the cover up!

Step 3



- Use your fingernail to pry up and disconnect the battery from the motherboard.


Step 4



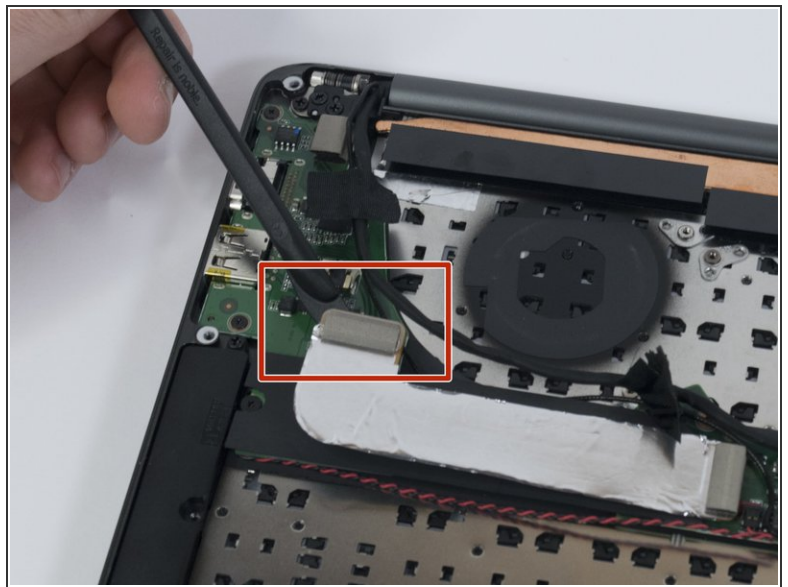
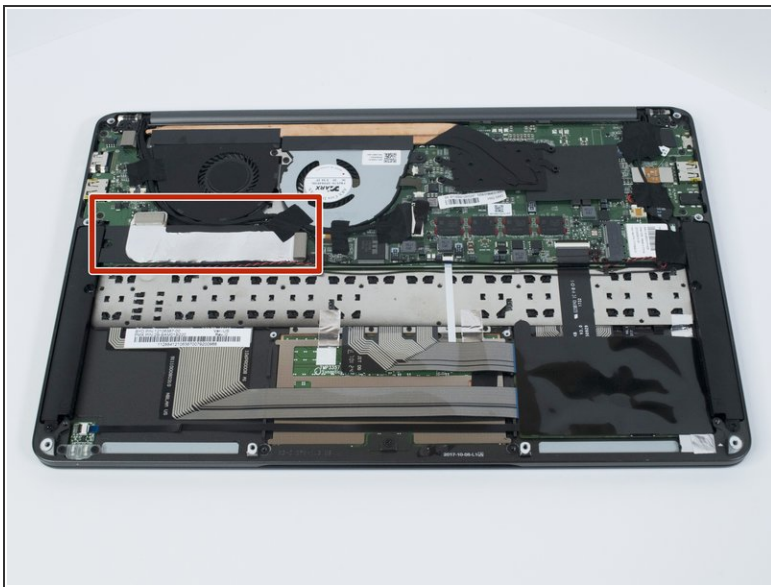
- Use a Phillips #00 screwdriver to remove the six, 5mm screws securing the battery.


Step 5



-  Remove any tape attached to the battery.
- Use the plastic spudger to pry out the battery.

Step 6 — SSD



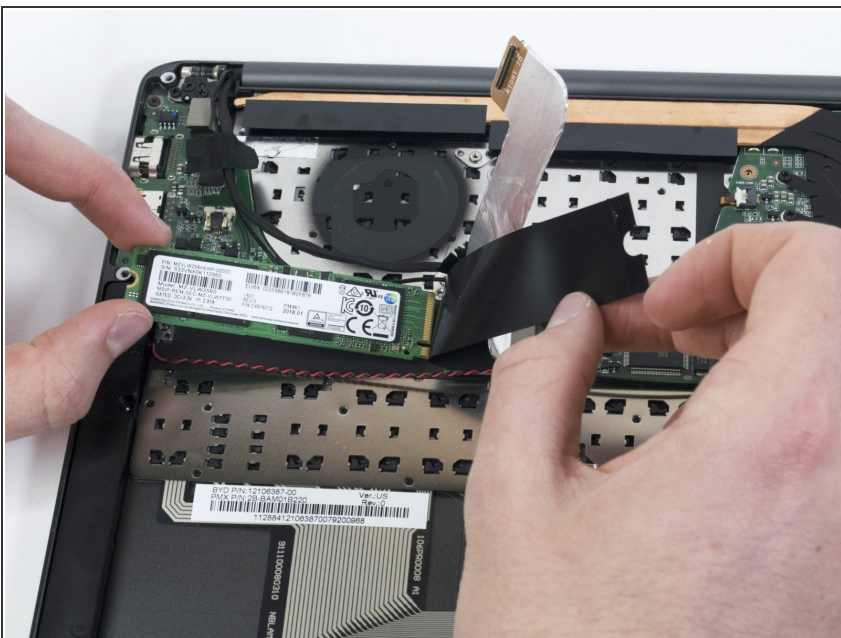
- Use a plastic spudger to disconnect one end of the interconnect cable.
-  Remove any tape attached to the interconnect cable.

Step 7



- **i** Lift the black plastic cover and interconnect cable to expose the SSD.
- Use a Phillips #00 to remove the one, 2mm screw on the left side of the SSD.

Step 8



- Remove the SSD from the motherboard by sliding it out at an angle.

To reassemble your device, follow these instructions in reverse order.