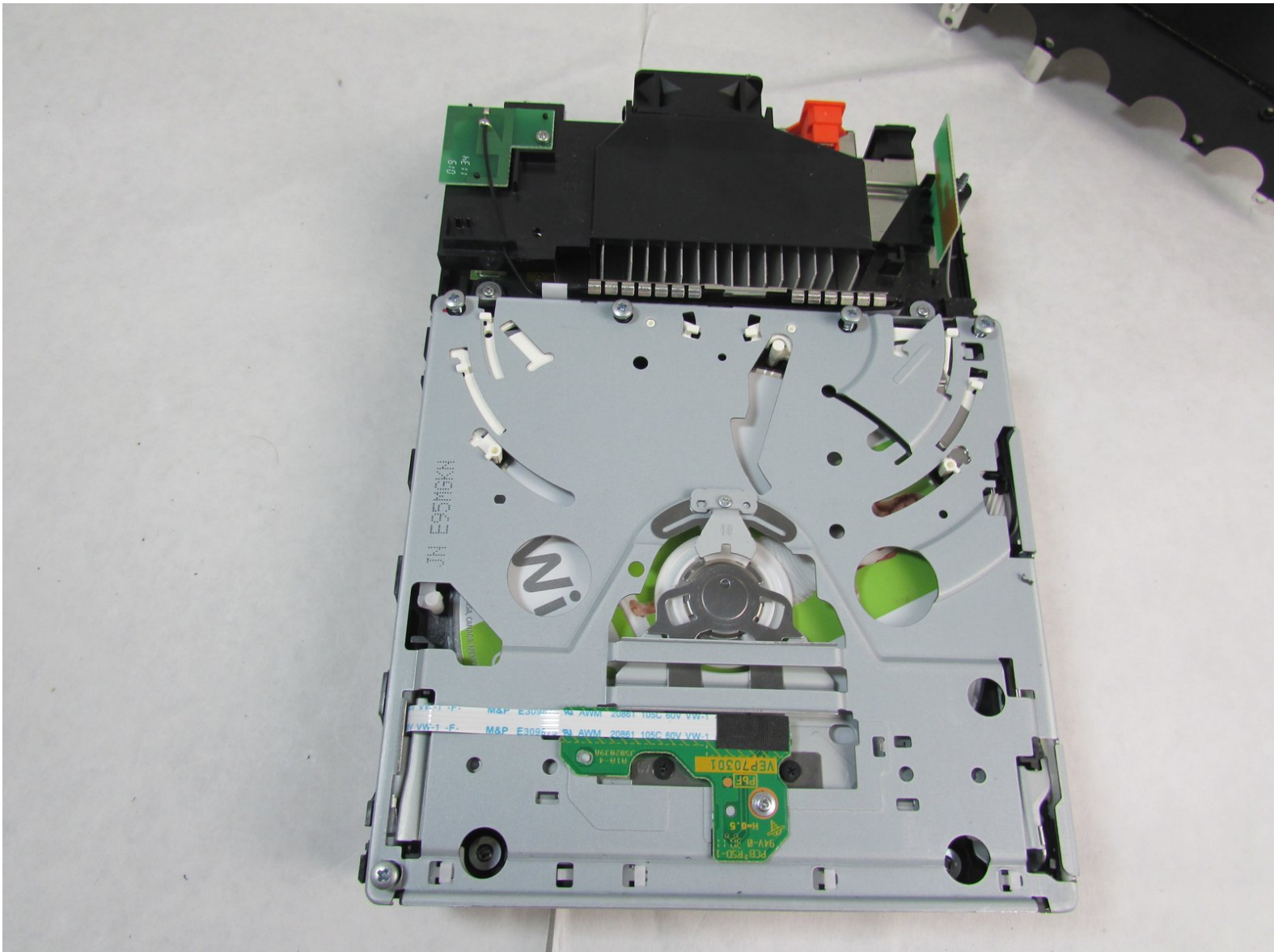




# Nintendo Wii 2011 DVD Drive Replacement/Repair

This guide is for repairing/replacing a jammed or broken DVD drive in the Nintendo Wii 2011.

Written By: Noah Mussin Phillips



## INTRODUCTION

This instruction guide is for a 2011 Nintendo Wii that has a broken or jammed DVD drive. You will know of your DVD drive is broken if you cannot get your game disc in or out of the game console. As your Wii becomes older, it is likely that it can become broken. If your DVD drive becomes jammed or broken, follow these instructions to fix the problem. There are no special requirements, you just need your console and this should be a quick and easy fix. If you are having trouble, check out the [troubleshooting page](#).



### TOOLS:

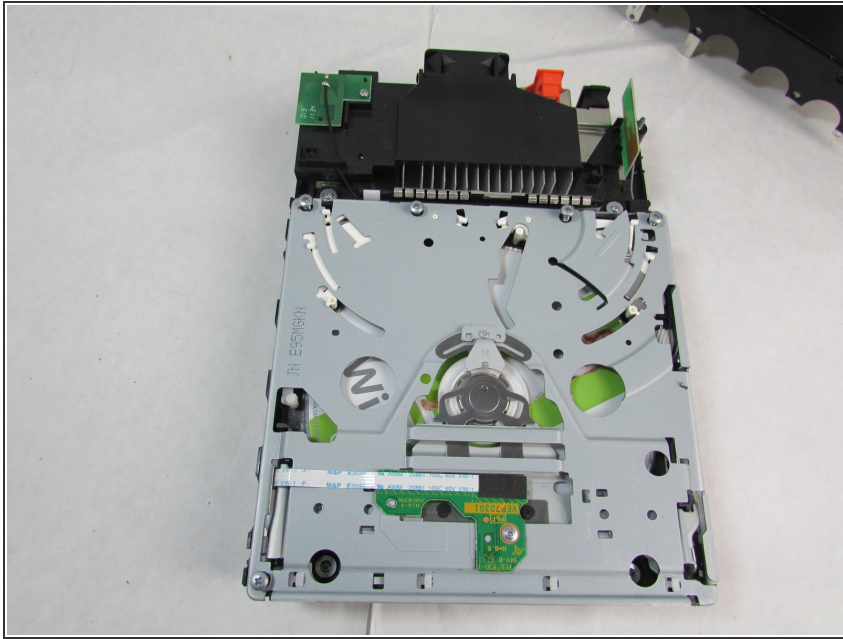
- [Phillips #0 Screwdriver](#) (1)
  - [Y1 Tri-point Screwdriver](#) (1)
  - [Tweezers](#) (1)
- Angle-head Needle Nose
- [Metal Spudger](#) (1)
  - [1/4" hex bit](#) (1)



### PARTS:

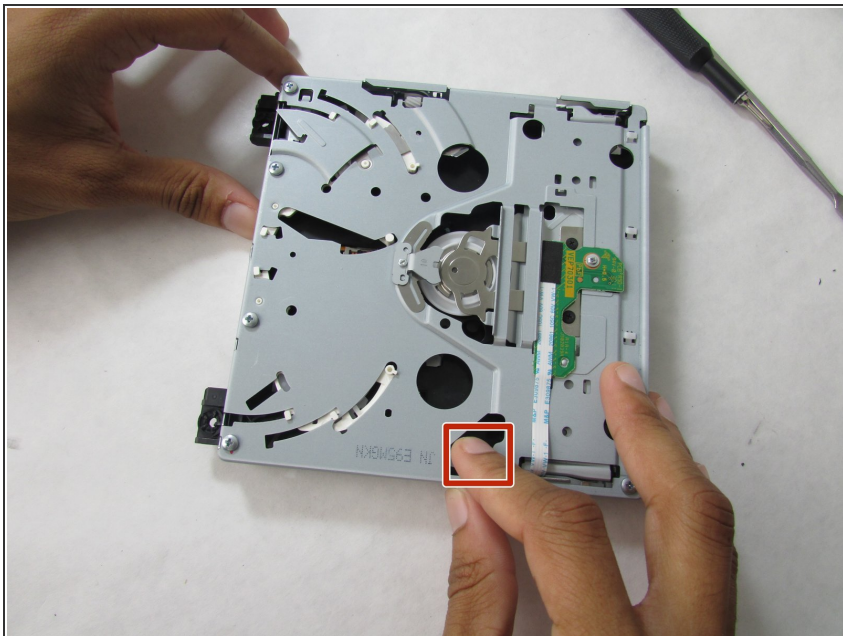
- [Nintendo Wii DVD Drive](#) (1)

## Step 1 — DVD Drive



- Follow [Nintendo Wii 2011 Outer Case Removal/Dissassembly](#) up to step 14.
- Begin this guide on the metal casing side of the DVD drive.
- Steps 2-6 of this guide will walk you through attempting to move/adjust components of the drive that may have become jammed in place.

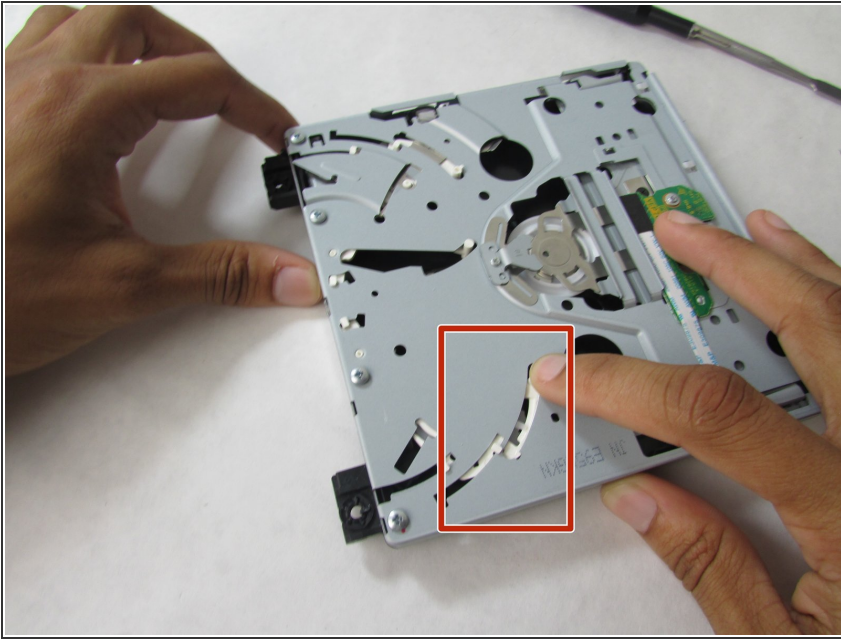
## Step 2



- Try to adjust the white plastic component found in the hole in the metal case. It should move freely, if not try to wiggle it until it does.

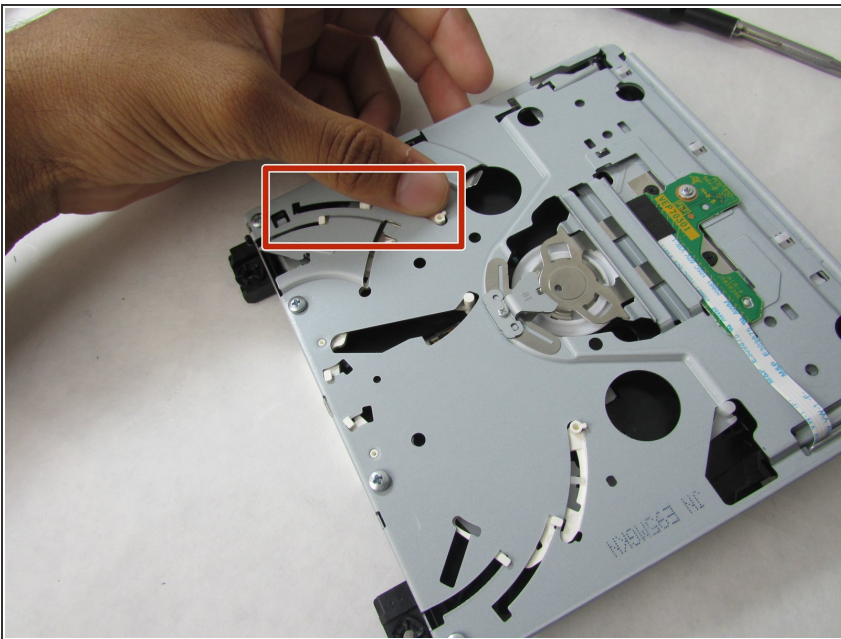


### Step 3



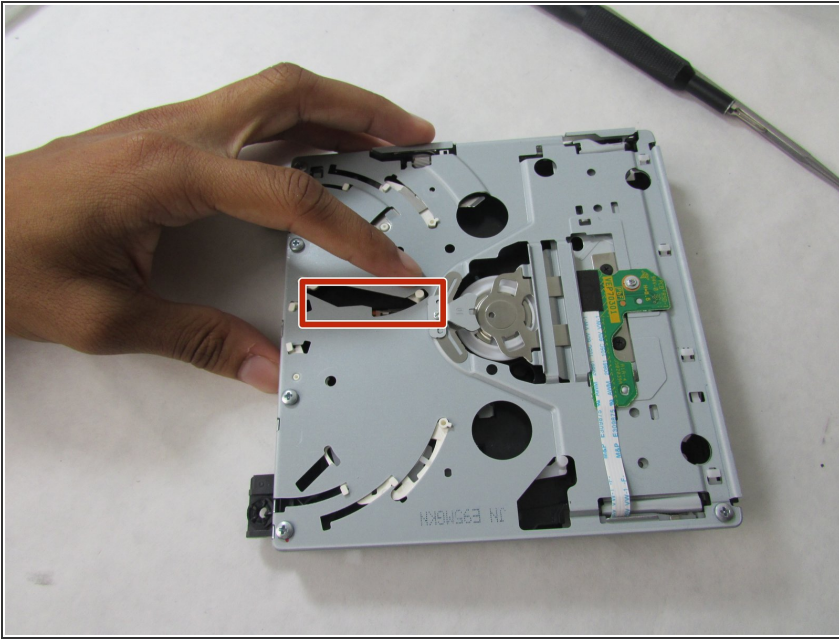
- Next, attempt to slide the white plastic component along the arch-shaped cut out in the metal case. It should move freely when the drive is open.

### Step 4



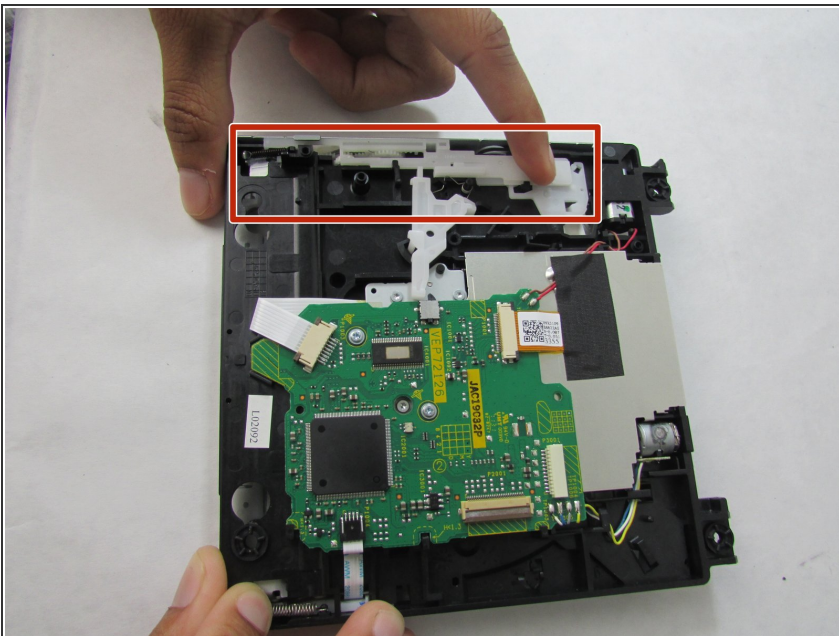
- Repeat step 3 with the identical component 2 inches above the first one.

## Step 5



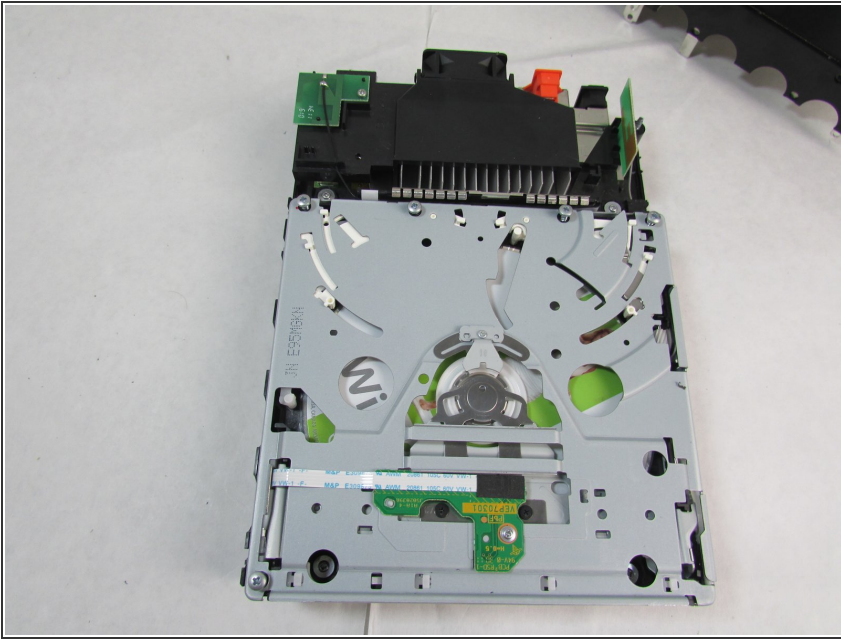
- Attempt to manipulate the white plastic component shown in the photo. If it is jammed, the disc drive may have broken internal components.

## Step 6



- Flip over the DVD disc drive. Along one edge is a long white rail on gears for moving the DVD in and out of the drive. Slide it along its track, it should snap back into place. If not, there may be internal damage to the DVD drive.

## Step 7



- If none of those adjustments fix the problem with your DVD drive, you will need to replace it.
- Follow the steps for removing the DVD drive in reverse to install a new DVD drive.

To reassemble your device, follow these instructions in reverse order.