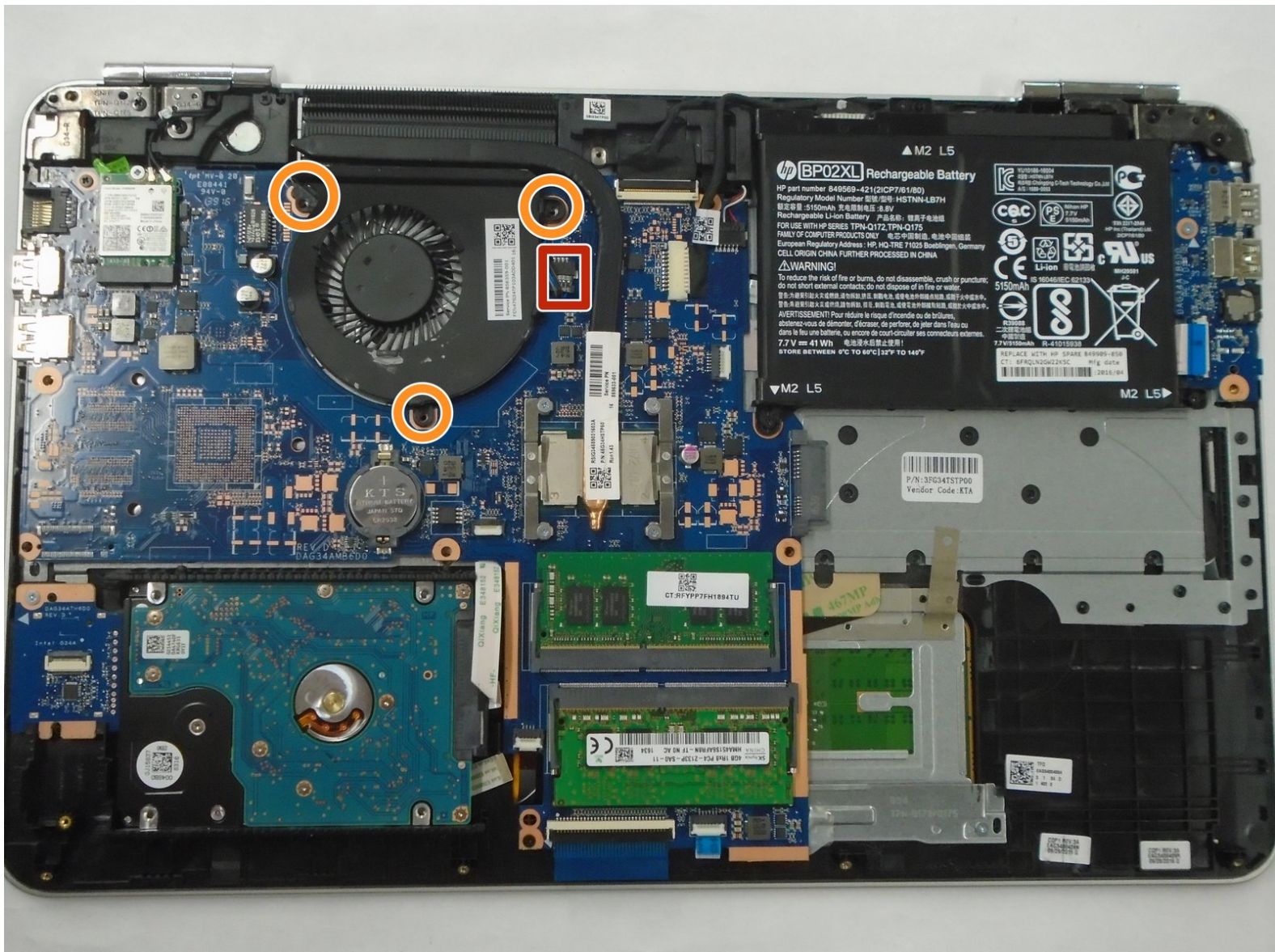




HP Pavilion 15-au123cl Motherboard Replacement

This guide walks through the motherboard replacement for the HP Pavilion 15-au123cl.

Written By: Joseph Nicholson



INTRODUCTION

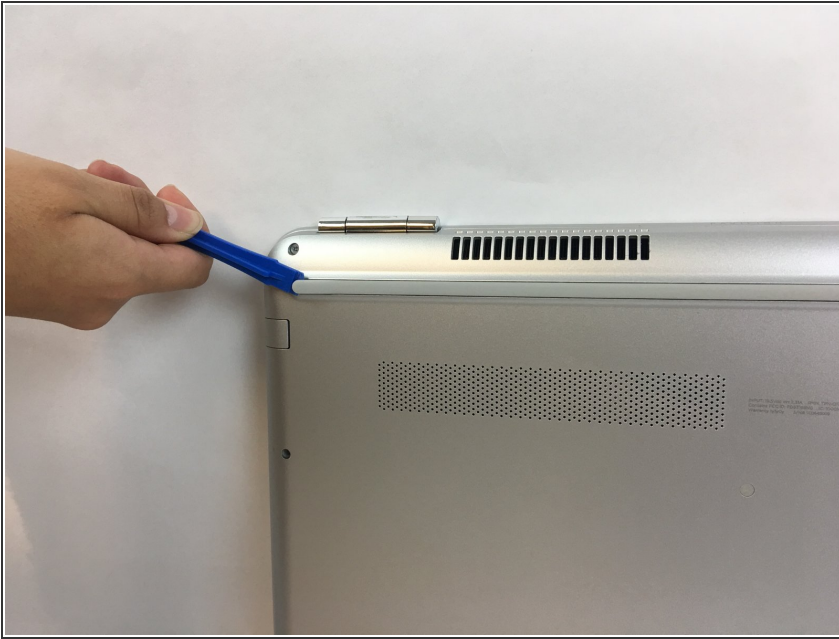
This guide will display how to replace the motherboard of the HP Pavilion 15-au123cl Laptop. The replacement is not hard, but will require the removal of the fan, network card, and battery beforehand.



TOOLS:

- [iFixit Opening Tool](#) (1)
 - [Spudger](#) (1)
 - [Phillips #0 Screwdriver](#) (1)
 - [Small Plastic Spudger](#) (1)
-

Step 1 — Battery



- ★ Make sure the laptop is off and unplugged before starting.
- Using the plastic opening tool, remove the top rubber feet on the back panel as it hides one of the screws we will be removing.

Step 2



- Using a PH0 screwdriver, unscrew the ten 4.4mm Phillips head screws located on the back panel.

Step 3



- Using the plastic opening tool, remove the back cover of the laptop.
- ⓘ It is recommended that you start with a corner and run the tool throughout the edges of the cover.
- ⚠ Be sure not to bend the cover by applying too much force.

Step 4



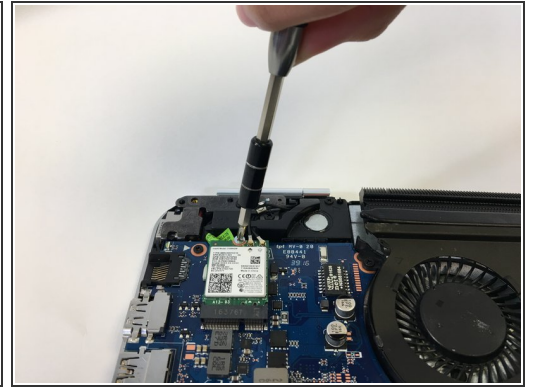
- Using a PH0 screwdriver, unscrew the two 3.8mm PH0 Phillips head screws that hold the battery in place.

Step 5



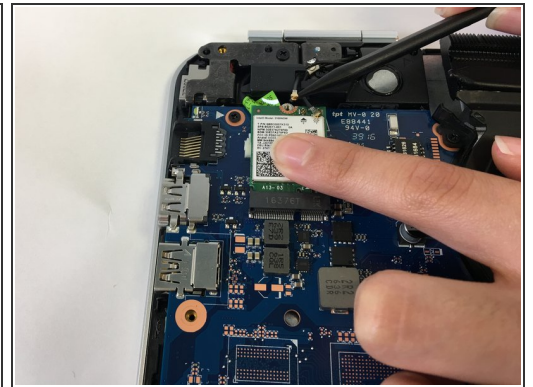
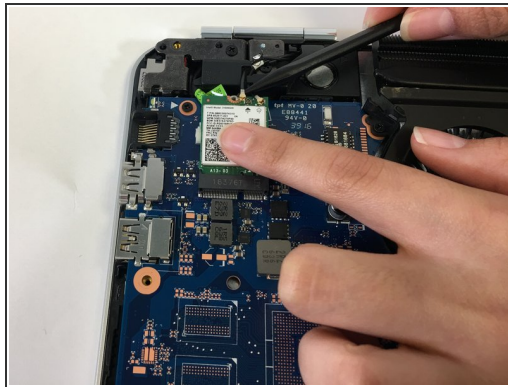
- Carefully disconnect the cable connecting the top of the battery and remove the battery.

Step 6 — Network Card



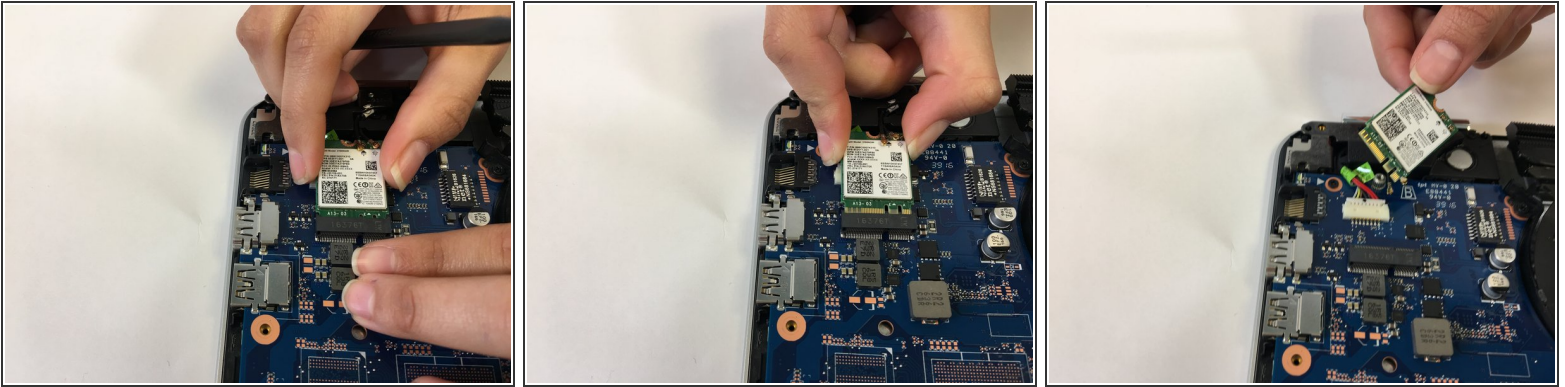
- The network card is located at the top left corner of the motherboard.
- Unscrew the 4.4mm PH0 Phillips screw at the top of the network card.

Step 7



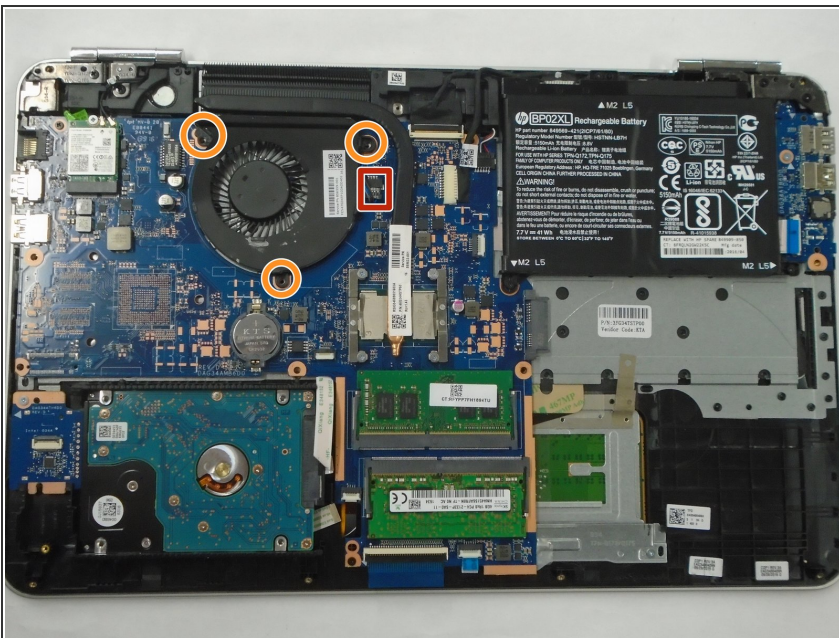
- Using the spudger, remove the two gold pins at the top of the network card.
- ⓘ It is recommended to gently apply a vertical force upward with the spudger.

Step 8



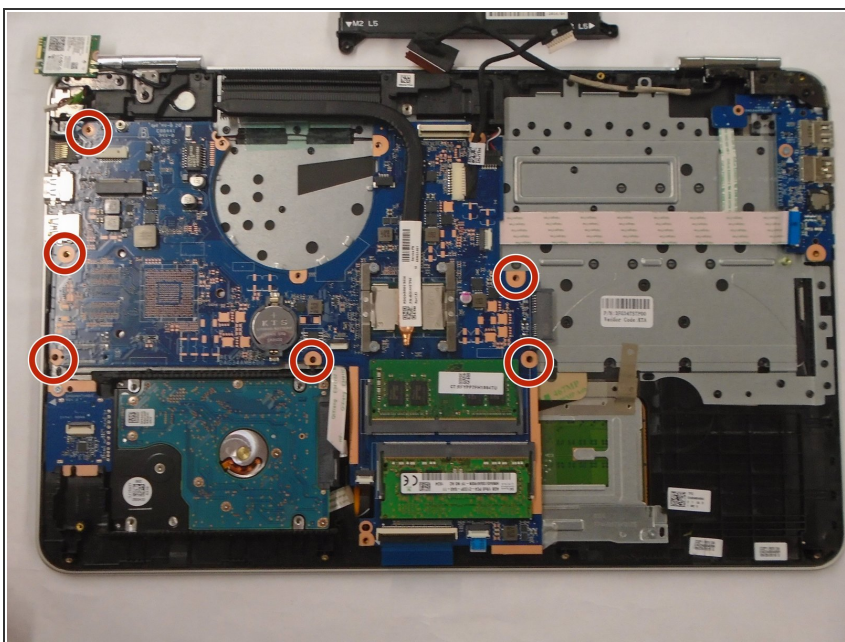
- Lift up the network card and remove it from the motherboard connector.

Step 9 — Motherboard



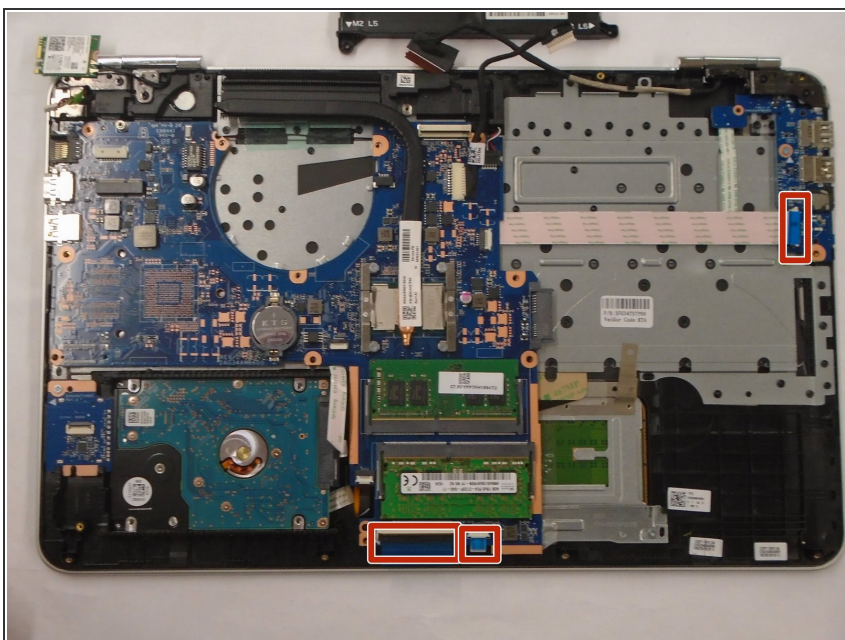
- Firmly disconnect the fan from the motherboard.
- Remove the three screws from the fan using a Philips #0 Screwdriver.

Step 10



- Remove the six screws from the motherboard using a Philips #0 Screwdriver.

Step 11



- Disconnect the ribbon cables from the motherboard.
- Remove the motherboard.

To reassemble your device, follow these instructions in reverse order.