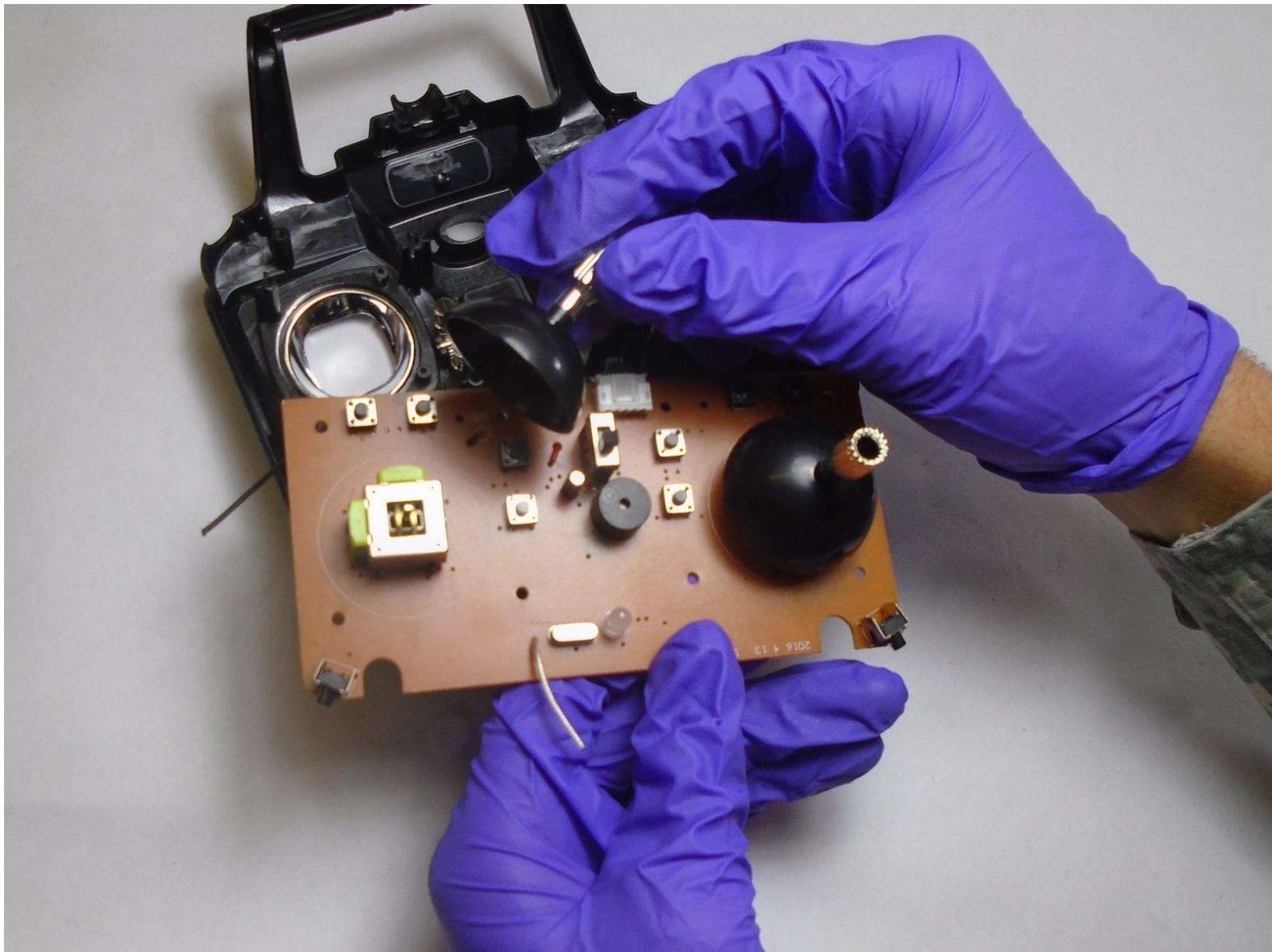




Protocol TerraCopter EVO Left & Right Joystick Replacement

Use this guide to help replace the Protocol TerraCopter EVO drone controller's left and right joysticks.

Written By: Derek Vande



INTRODUCTION

The TerraCopter Evo controller joysticks are used to guide and steer the drone in flight and on the ground. The joysticks can break off from the controller or separate from their assemblies. This guide will assist in opening the controller to the joysticks and completely replacing them. If your joysticks are just cosmetically damaged, you can just follow up to Step 2 and then reassemble with your new joysticks. However, if your joysticks are not processing input correctly or at all, you will need to solder to replace the electrical component. Check out our [How to Solder and Desolder Connections](#) guide if you are unfamiliar with soldering best practices.



TOOLS:

- [Phillips #0 Screwdriver](#) (1)
 - [Soldering Iron](#) (1)
-

Step 1 — Controller's battery



- Using a Phillips #0 screwdriver, remove the screw connecting the battery cover to the controller.
- Remove the battery cover from the controller.

Step 2



- Remove all of four of the AA batteries from the controller.

Step 3 — Protocol TerraCopter EVO Controller Opening



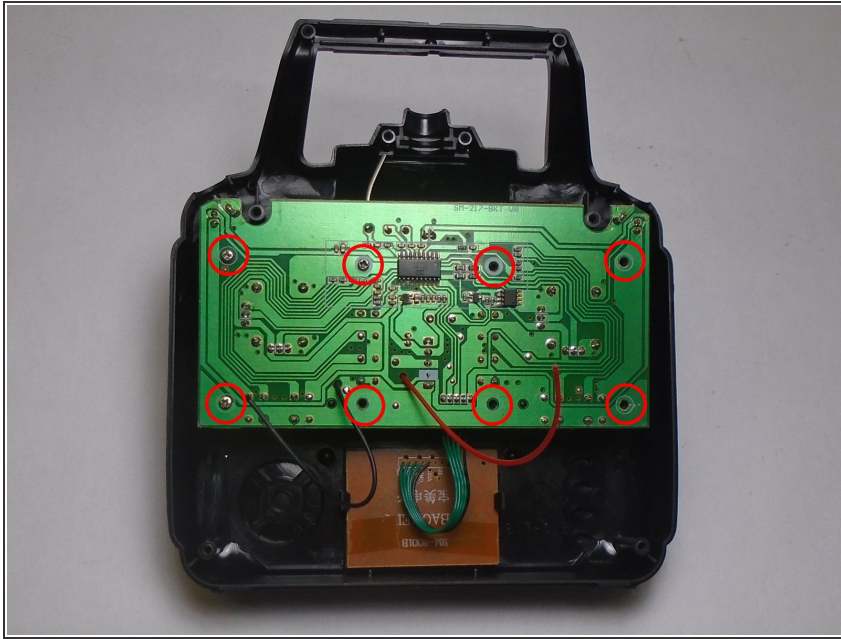
- i** Note: the four Phillips screws on the rear panel are a millimeter longer than the two screws near the antenna and the two screws on the handle.
- Orientate the controller to where the battery compartment is facing upwards.
- Remove the four 5mm and four 4mm Phillips #1 screws from the case.

Step 4



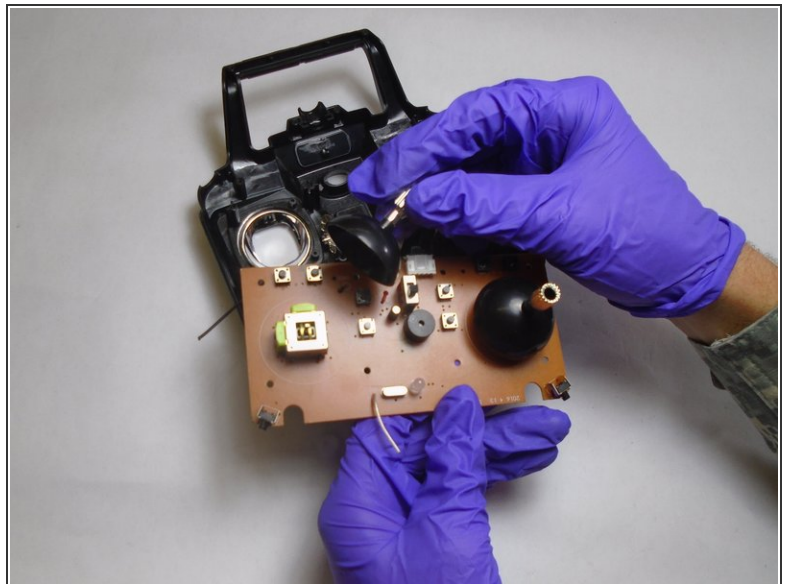
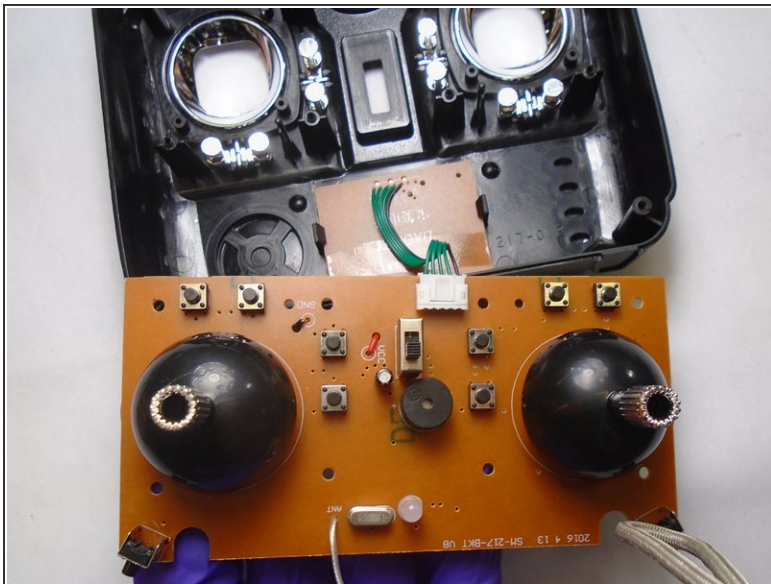
- Since the battery wires are still attached, carefully move the rear panel down to expose the motherboard.

Step 5 — Left & Right Joystick



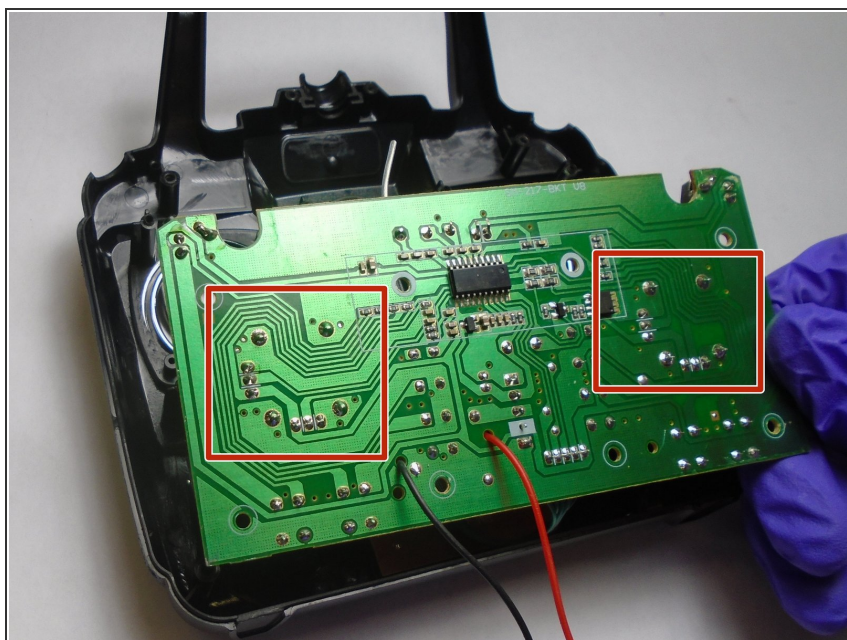
- Remove the eight 5mm Phillips #1 screws from the motherboard.

Step 6



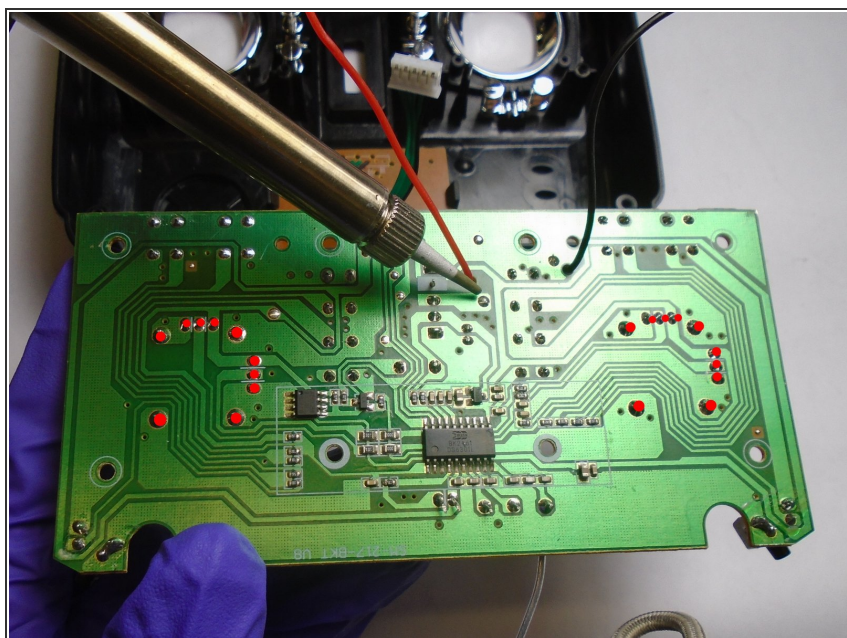
- After removing the screws, orientate the motherboard to where the side with the black joysticks face upwards.
- Pull the black plastic joysticks from the motherboard, out of their assembly.

Step 7



- Once the joysticks are removed, orientate the motherboard to where the green side is facing upwards.
- On the green side of the motherboard, locate the two sets of ten pin arrays that hold the joystick assembly to the motherboard.

Step 8



- Melt the existing solder points on the pin arrays with a soldering iron and lift the joystick assemblies from their location on the motherboard.
- ① Check out our [How to Solder and Desolder Connections guide](#) if you are unfamiliar with soldering practices.

To reassemble your device, follow these instructions in reverse order.