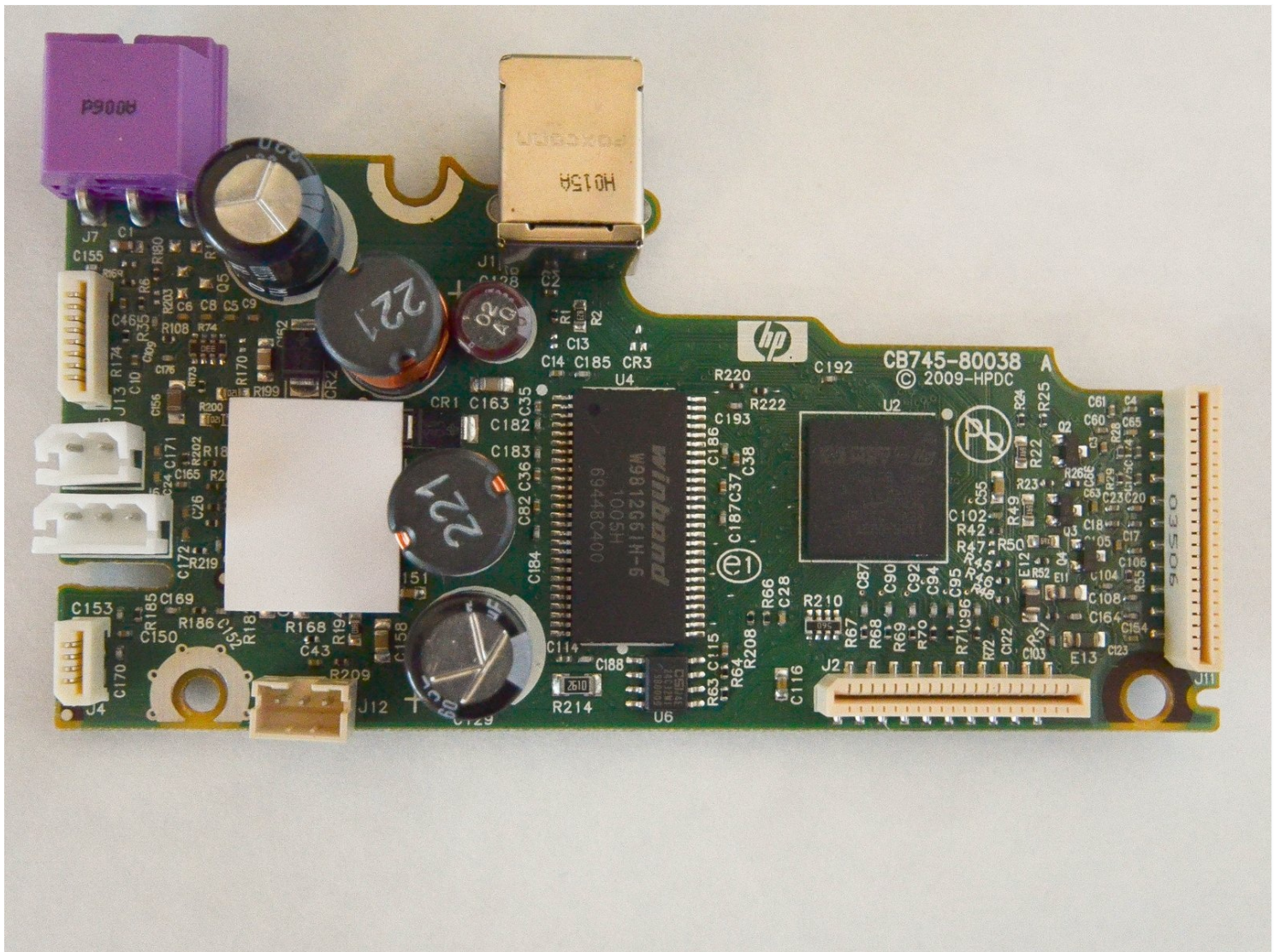




HP Deskjet F4480 Mother Board Replacement

If there are communication problems between the...

Written By: Allen Bailey



INTRODUCTION

If there are communication problems between the computer and printer, replacing the motherboard is an option to consider in order to fix this problem. The motherboard controls all operations and functions of the printer enabling it to run properly and communicate with the computer.

TOOLS:

TR10 Torx Security Screwdriver (1)

Step 1 — Open front access panel



- Open the front access panel by placing your finger in the front slot and pulling gently.

Step 2 — Top Lid



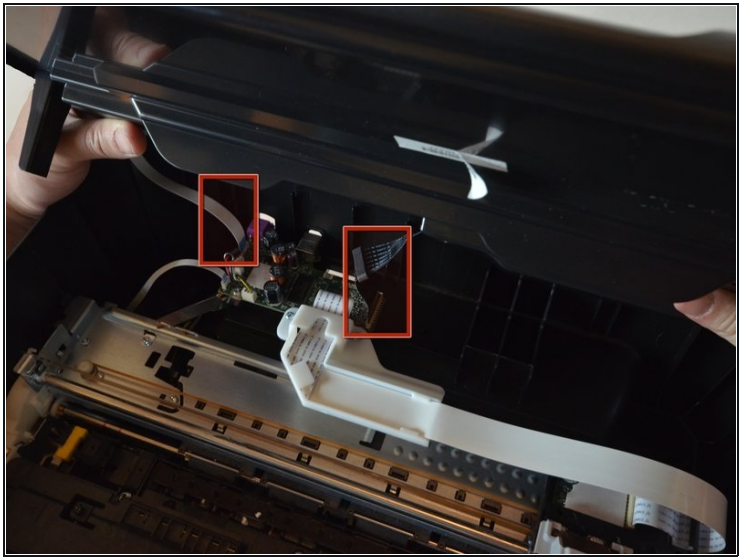
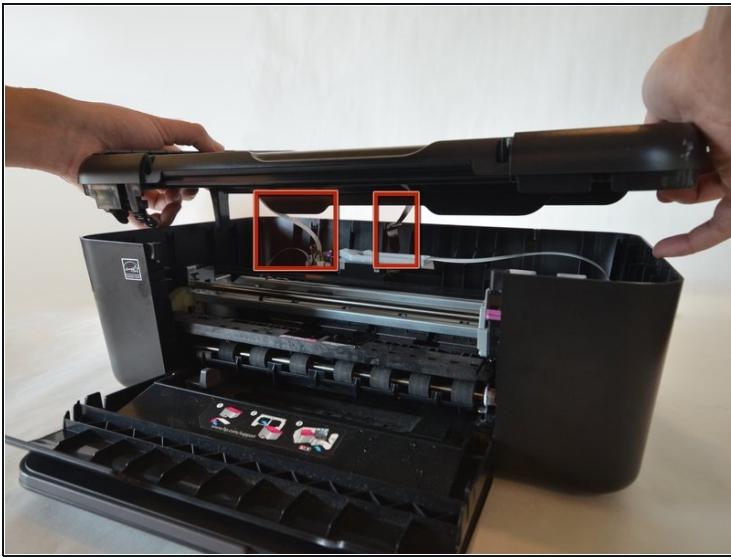
- Open the protective lid that is covering the glass. Press gently against the base of the panel to remove the lid from the rest of the printer.

Step 3



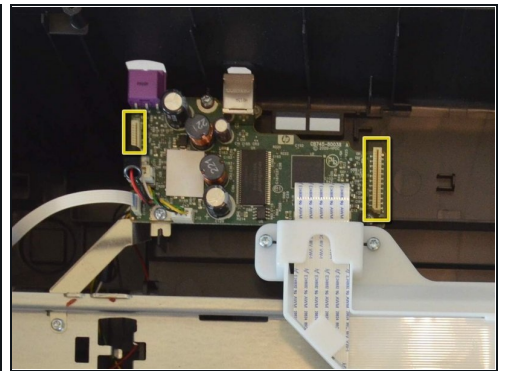
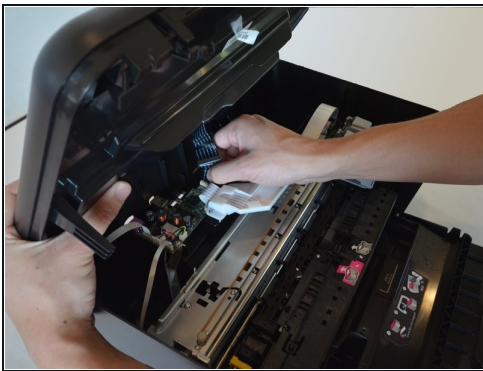
- Remove the **four** 9mm T10 Torx screws on the top.

Step 4



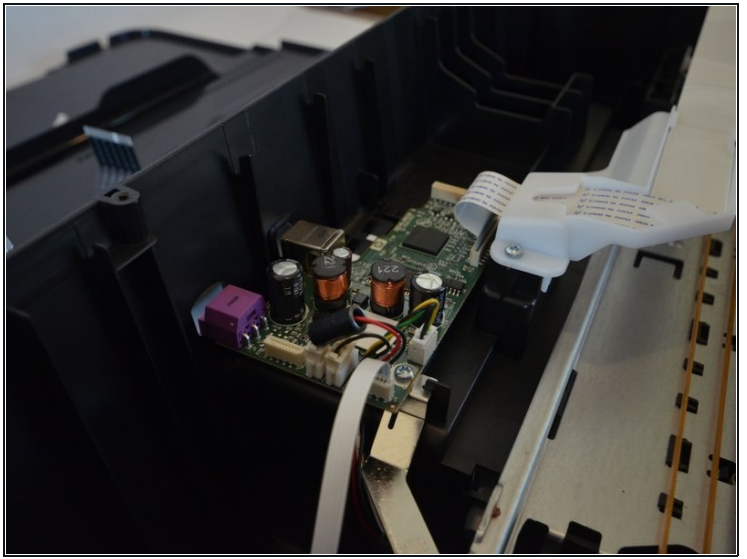
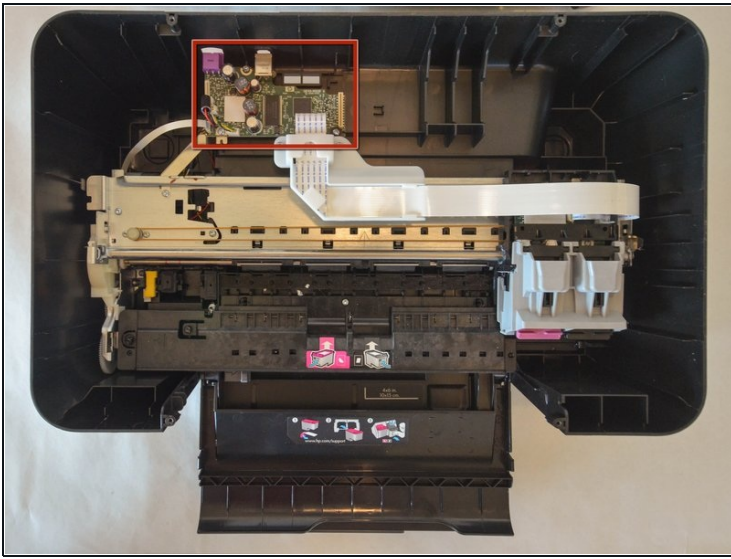
- Carefully lift the top panel off of the printer.
- Do not tear or damage the **two** cables that connect the top lid to the motherboard.

Step 5



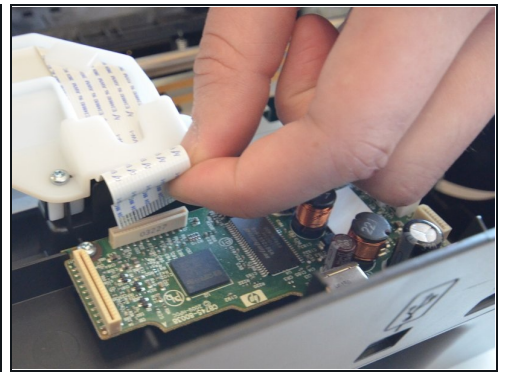
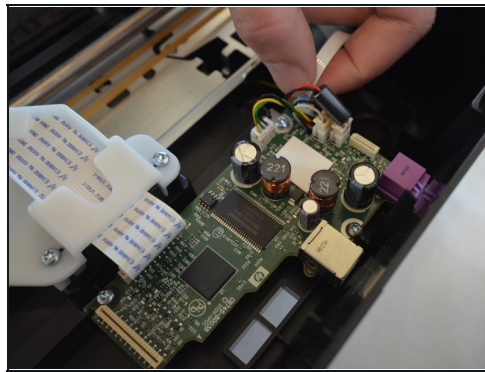
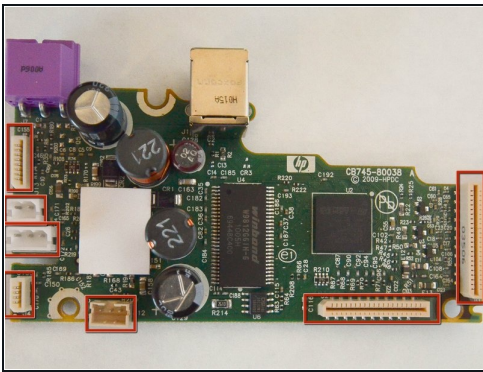
- Remove the **two** cables by gripping each one close to their connection ports on the motherboard and gently disconnecting them.

Step 6 — Mother Board



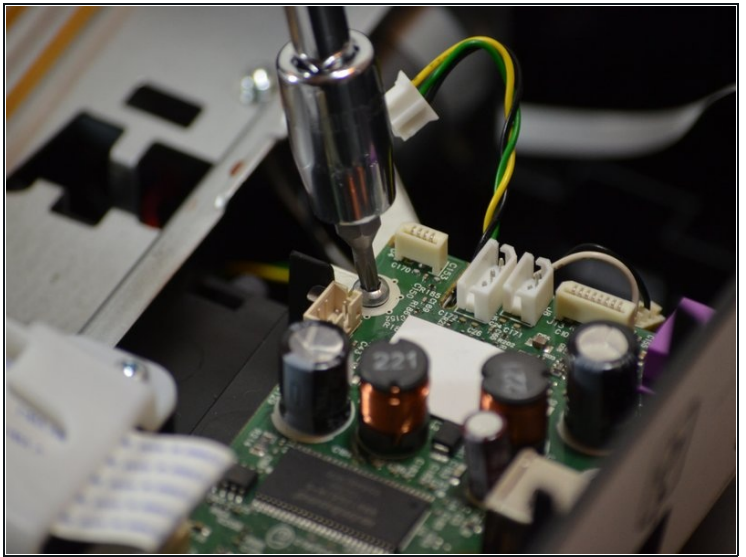
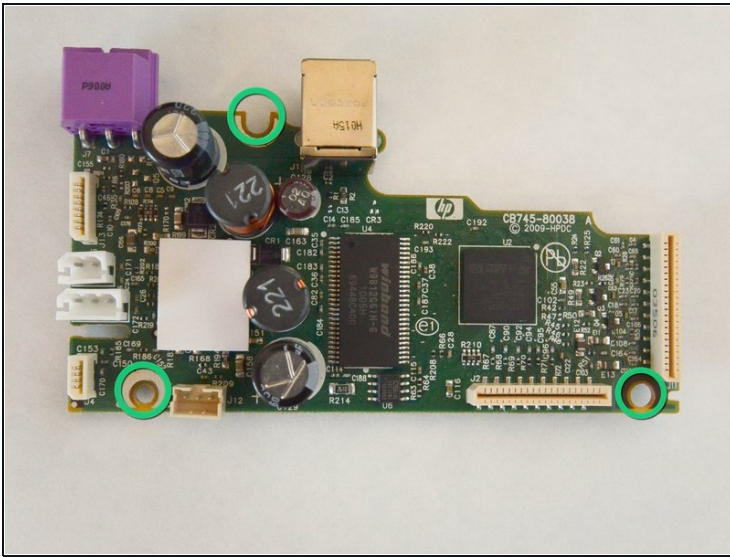
- The mother board is located at the back of the printer.

Step 7



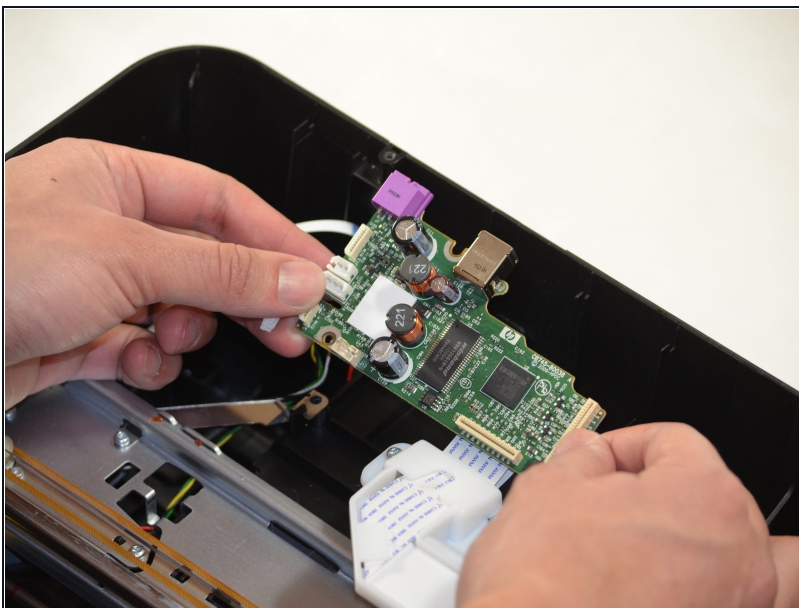
- ① Take note of the wire's location and orientation as this will be important to properly reassemble your device.
- Remove all of the wires connected to the mother board. There are **seven** in total.

Step 8



- Remove the **three** 9mm T10 Torx screws that hold the motherboard to the body of the printer

Step 9



- At this point, the mother board should be free of all connections from the rest of the printer.
- Remove and replace the mother board with the new one.

To reassemble your device, follow these instructions in reverse order.