



Samsung Galaxy S III Motherboard Assembly Replacement

Prereq only.

Written By: Walter Galan



INTRODUCTION

Prereq only.



TOOLS:

- [Phillips #00 Screwdriver](#) (1)
 - [iFixit Opening Tools](#) (1)
-

Step 1 — Motherboard Assembly



- Use a plastic opening tool to pry the front-facing camera connector from its socket on the motherboard.

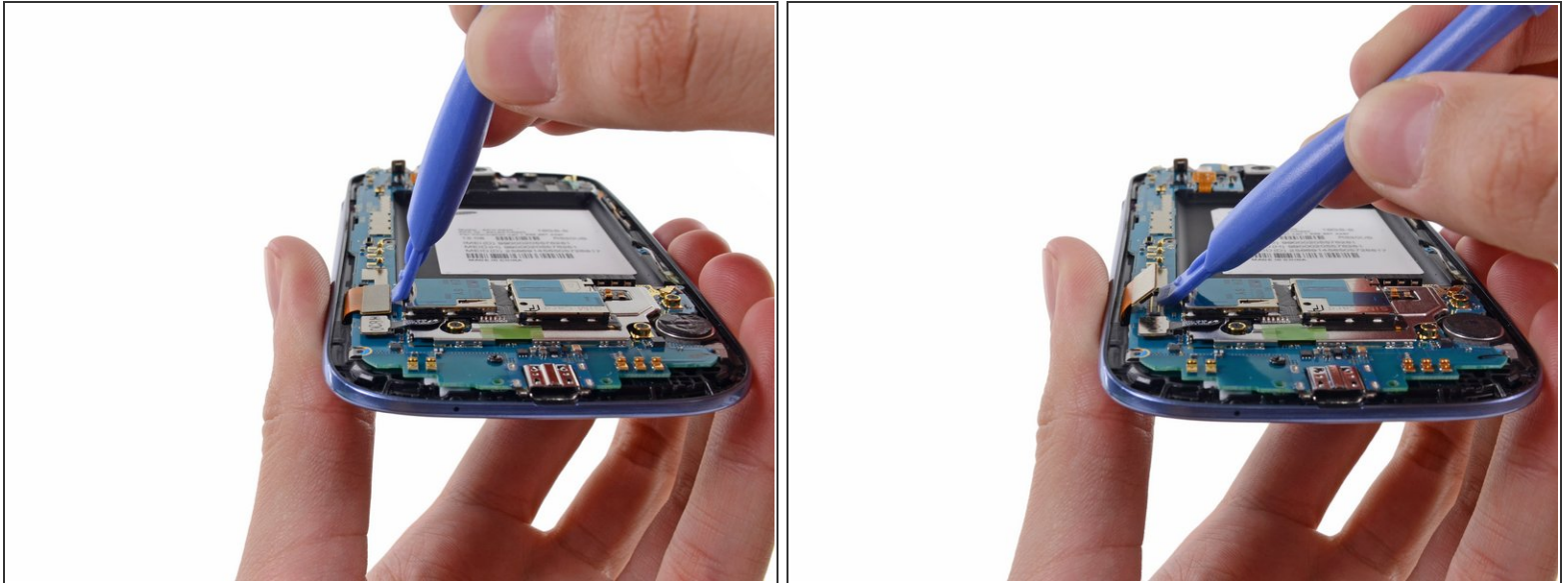
⚠ Do not try to remove the front-facing camera just yet. Its cable is still routed beneath the motherboard assembly to the ambient light sensor.

Step 2



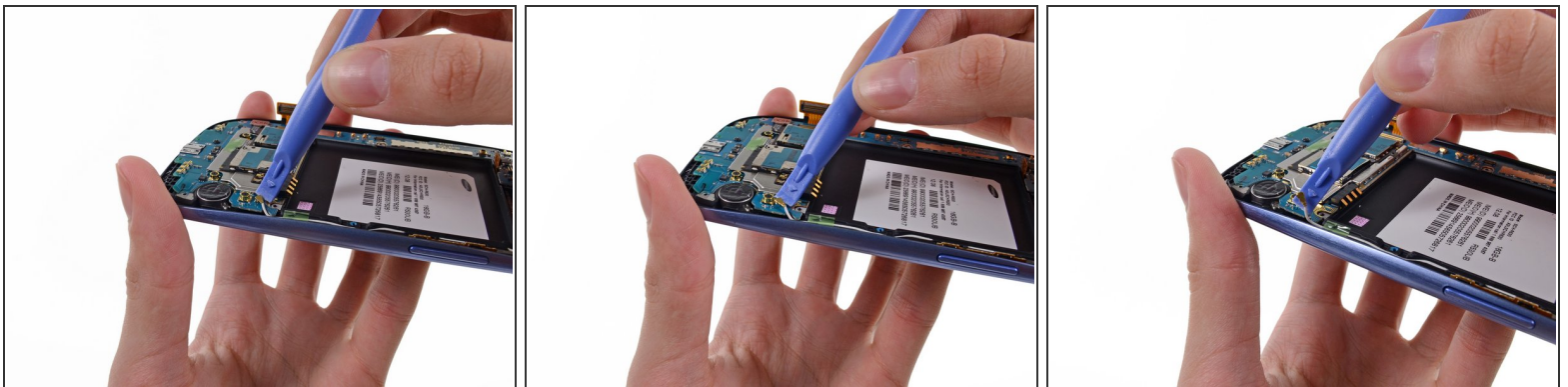
- Disconnect the digitizer cable by gently prying its connector up from its socket on the motherboard.

Step 3



- Disconnect the display data cable from the motherboard.

Step 4



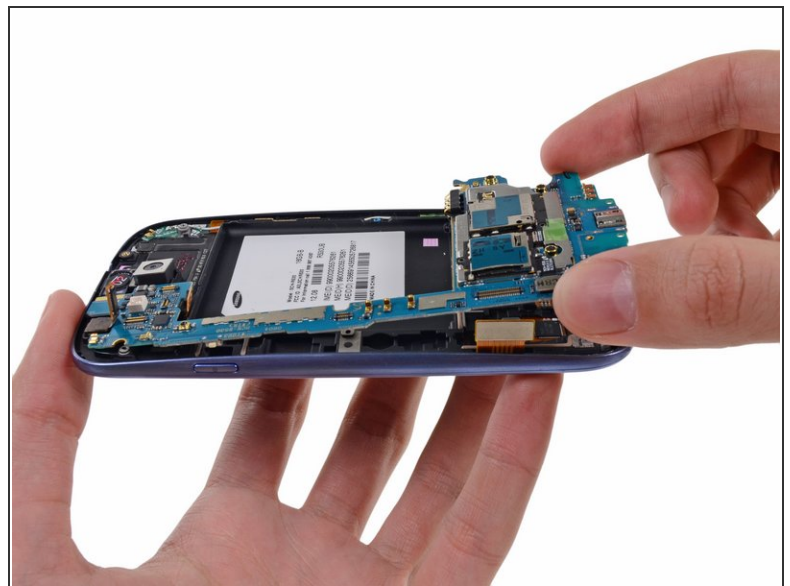
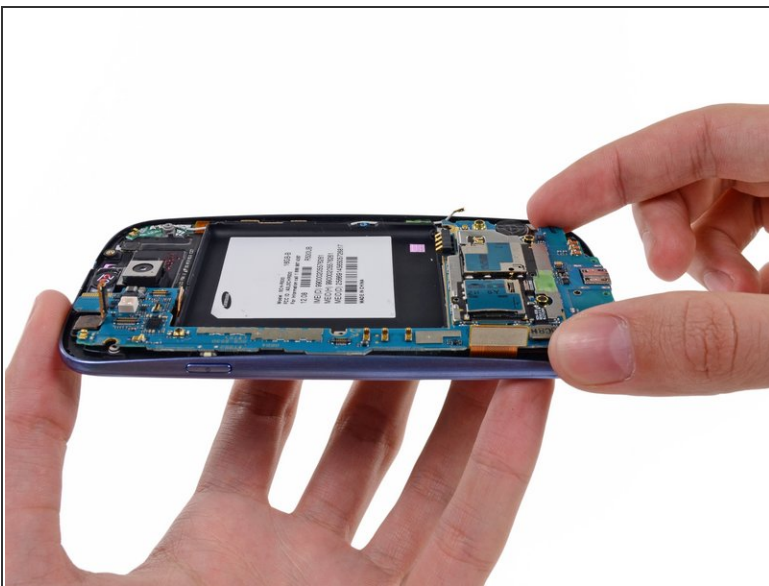
- Pry the Wi-Fi antenna cable connector up from its socket on the motherboard.
- Gently move the cable out of the way of the motherboard.

Step 5



- Remove the single 3.0 mm Phillips screw securing the motherboard to the front panel assembly.

Step 6



- Carefully lift the bottom of the motherboard assembly away from the front panel assembly.
- Remove the motherboard assembly from the front panel assembly, minding any cables that may snag on it.

To reassemble your device, follow these instructions in reverse order.