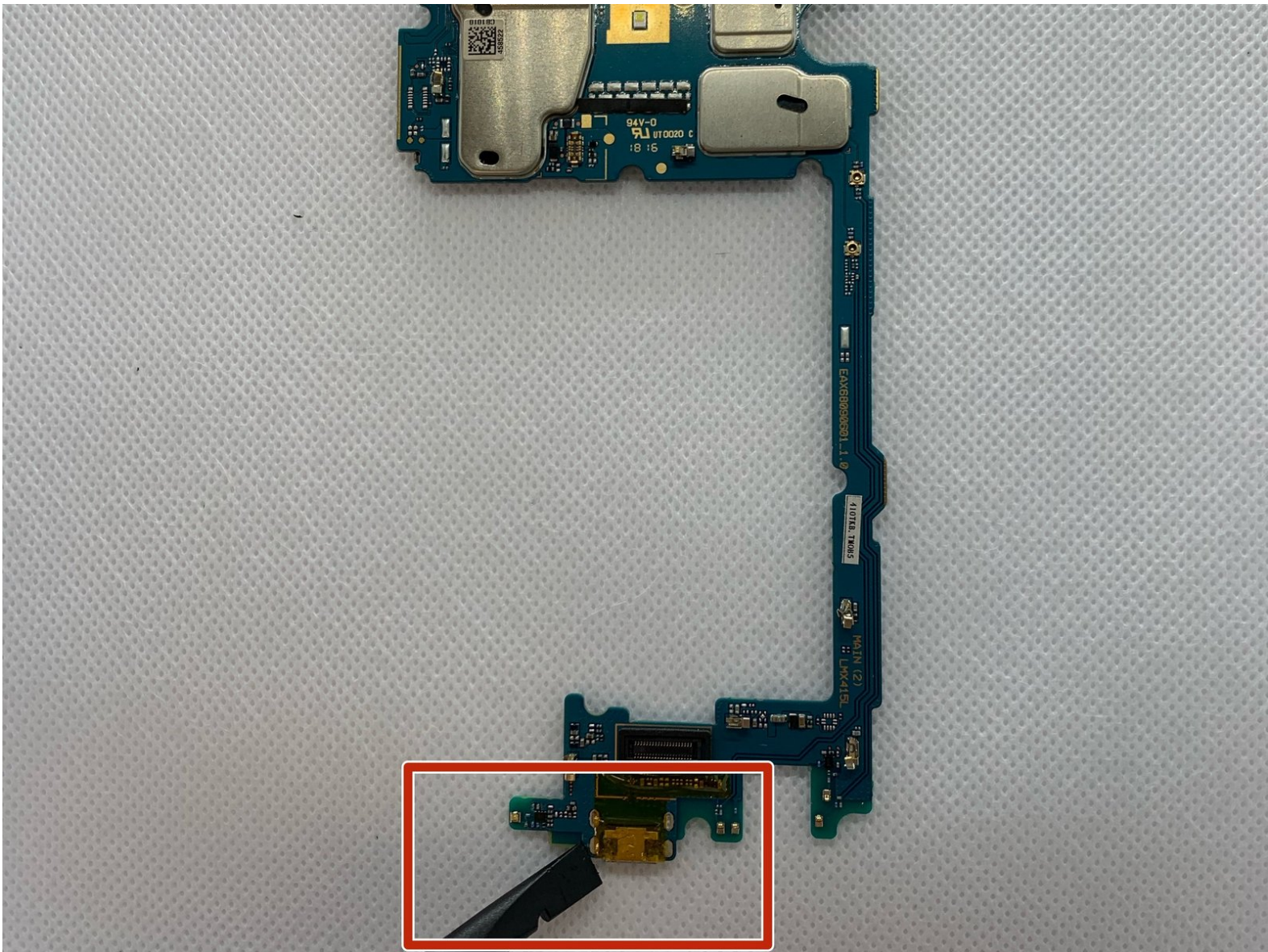




# LG K30 Charging Port Replacement

How to replace a charging port for the LG K30 phone.

Written By: Alisha Lee



# INTRODUCTION

This guide will show you the steps to replace the charging port on the LG K30.

Rather than buying a new phone because it will no longer charge, you can use this guide to replace the charging port. Please be sure to use caution when working with the soldering iron, as it can get very hot.

---

## TOOLS:

- [Jimmy](#) (1)
  - [Metal Spudger](#) (1)
  - [Phillips #00 Screwdriver](#) (1)
  - [Soldering Workstation](#) (1)
  - [Desoldering Braid](#) (1)
  - [Spudger](#) (1)
-

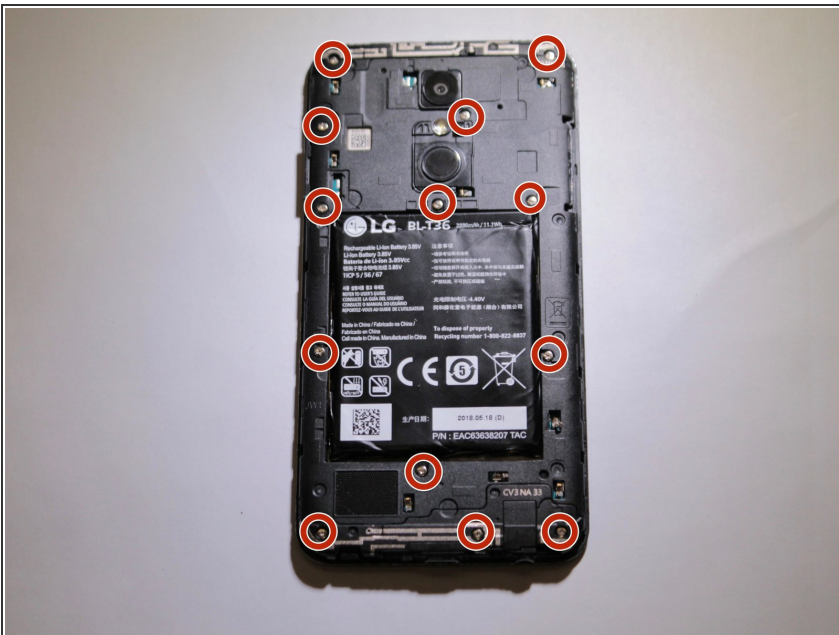
## Step 1 — Battery



**⚠ Before disassembling your LG K30, discharge the battery below 25%. A charged lithium-ion battery can catch fire and/or explode if accidentally punctured.**

- Power off your Phone before beginning disassembly.
- Use the 'Jimmy' and 'Metal Spudger' to slowly pry open the outsides of the back case.

## Step 2



- Remove the thirteen 3.4 mm Phillips #00 screws securing the midframe to the display assembly.



## Step 3



- Use a metal spudger or plastic opening tool to pry open the outer cover.

## Step 4



- Use the flat end of a spudger to detach the battery connector from the logic board.

## Step 5



- Use a spudger to pry the battery from the phone.
- ⓘ There may be an adhesive on the back of the battery and the phone. Pry the battery gently to prevent puncture or damage.
- ⚠ Do not bend or puncture the battery.

## Step 6 — Motherboard



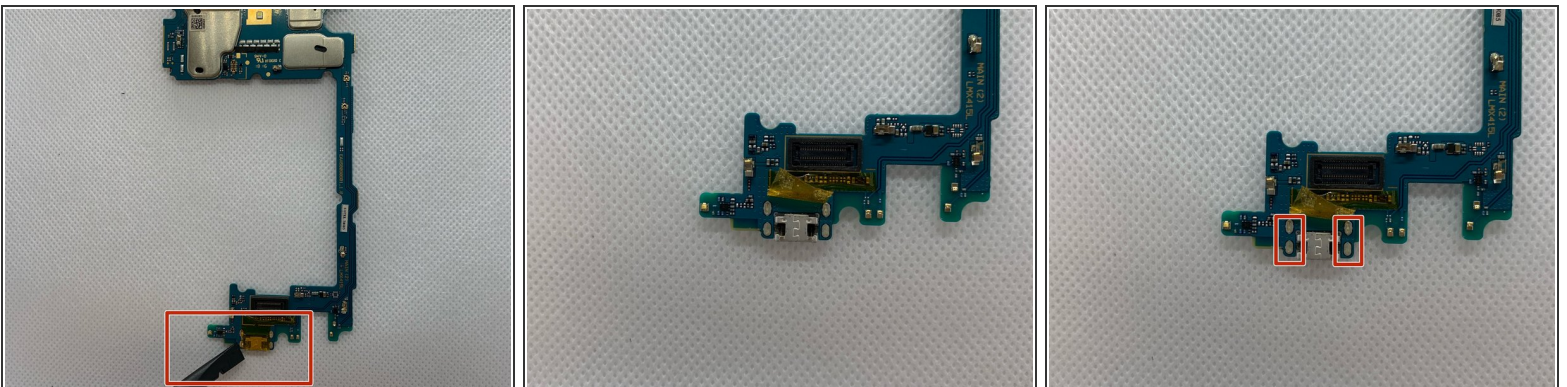
- Use a spudger to carefully disconnect the front camera connector.
- Use a spudger to disconnect the display cable connector.

## Step 7



- Remove the motherboard assembly from the display assembly with the a spudger or hand.

## Step 8 — Charging Port

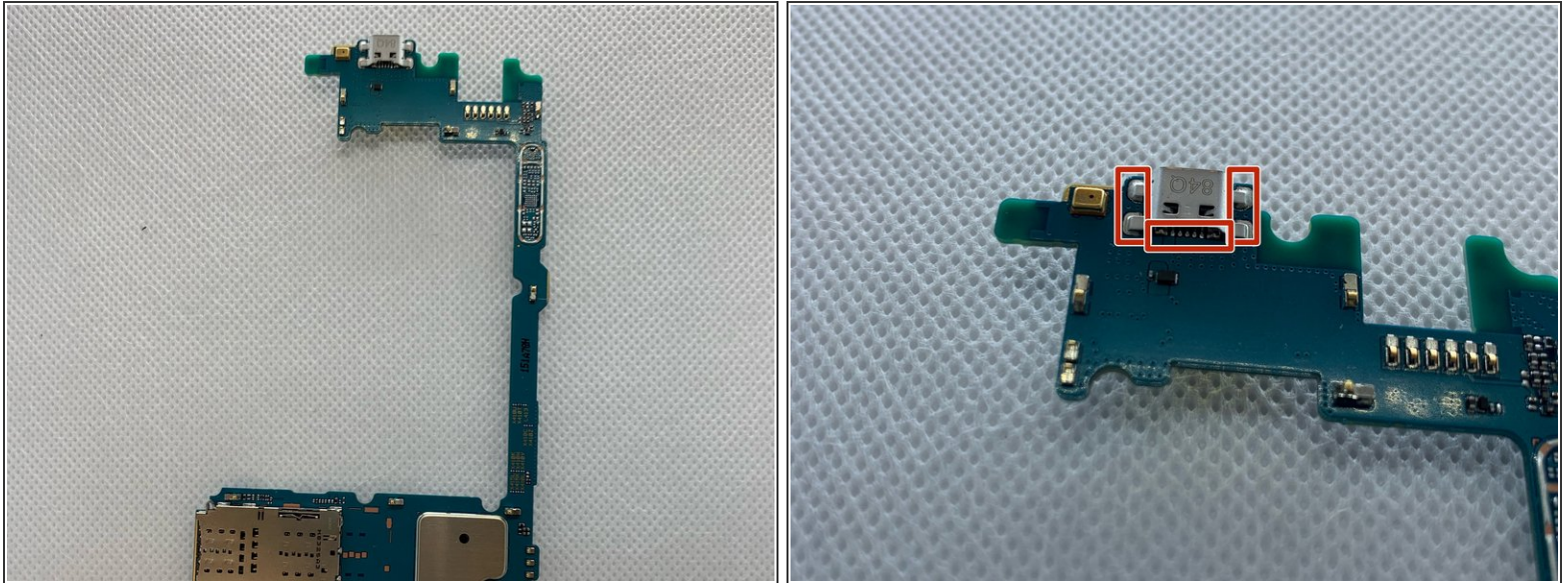


- For a guide on how to solder and unsolder components; please refer to: [How To Solder and Desolder Connections](#)
- Peel back gold plastic protective film on motherboard to reveal 4 solder points which need to be desoldered with the desoldering wick.

**⚠ Use extreme caution: soldering iron can become extremely hot and cause burns.**



## Step 9



- Flip the motherboard over to the backside and use soldering iron to melt the solder on the charging port terminals; use the desoldering wick to remove the solder.

To reassemble your device, follow these instructions in reverse order.