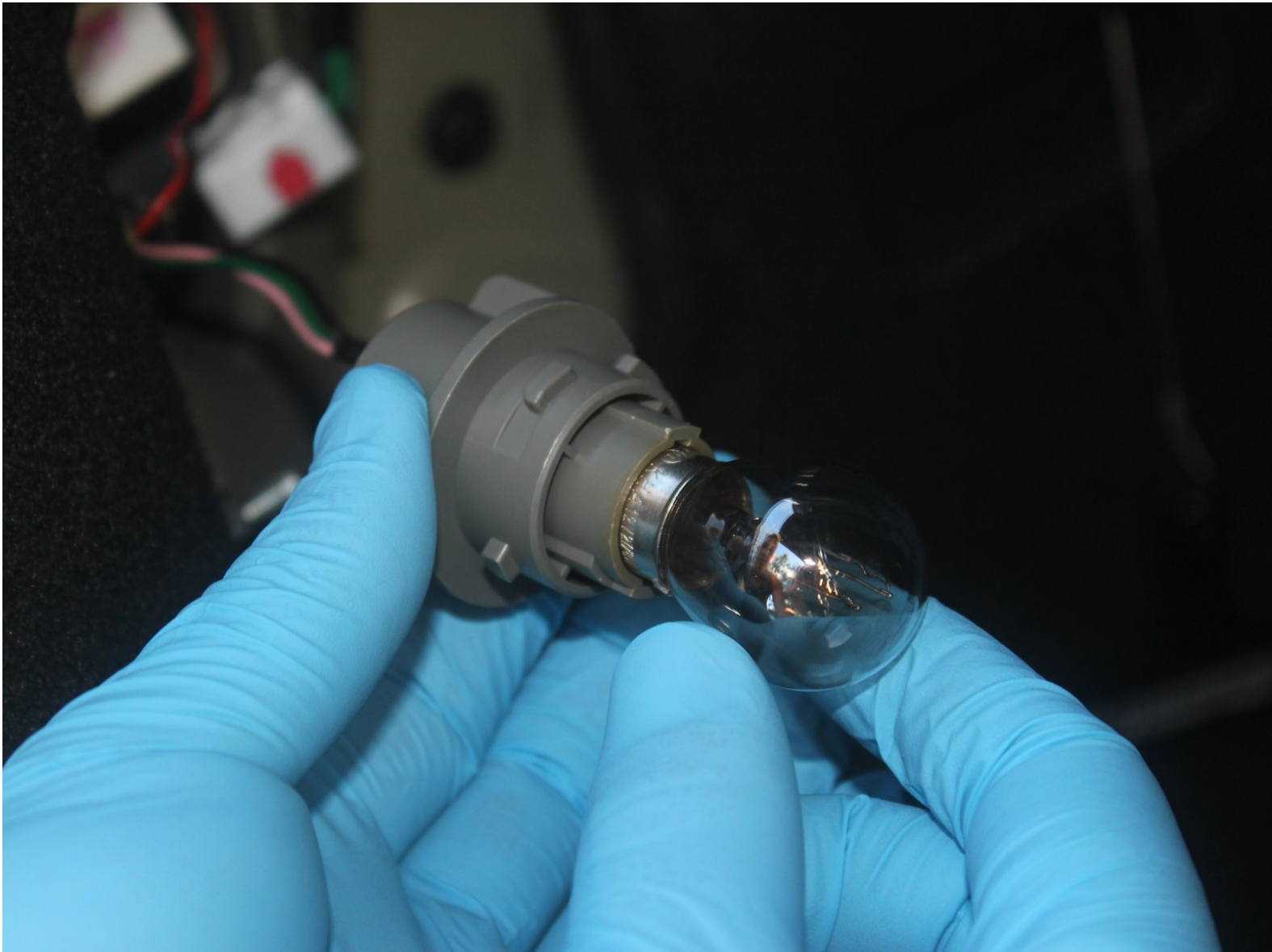




2011-2015 Kia Optima Brake Light Replacement

This guide is designed to replace a faulty brake light bulb on a 2011-2015 Kia Optima.

Written By: Jonathan Walborn



INTRODUCTION

A working brake light is not only essential for the safety of a motor vehicle, but it is also the law. This guide is designed for changing a 2011-2015 KIA Optima's rear brake light. Follow the instructions carefully as the process deals with glass and electricity. Be absolutely sure to remove the battery connector before changing the bulb and to handle the replacement with latex gloves.



TOOLS:

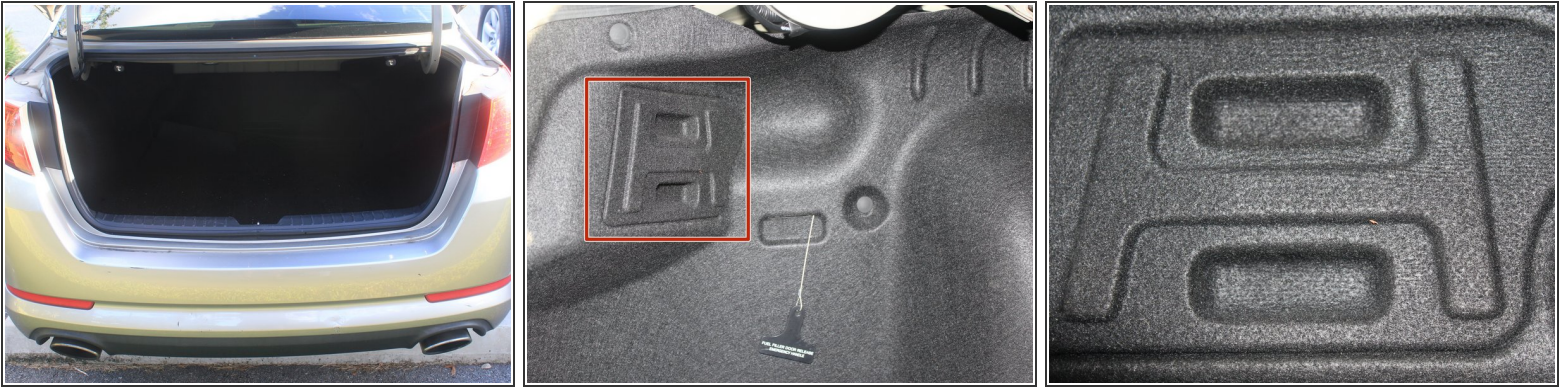
- [Latex or nitrile gloves](#) (1)



PARTS:

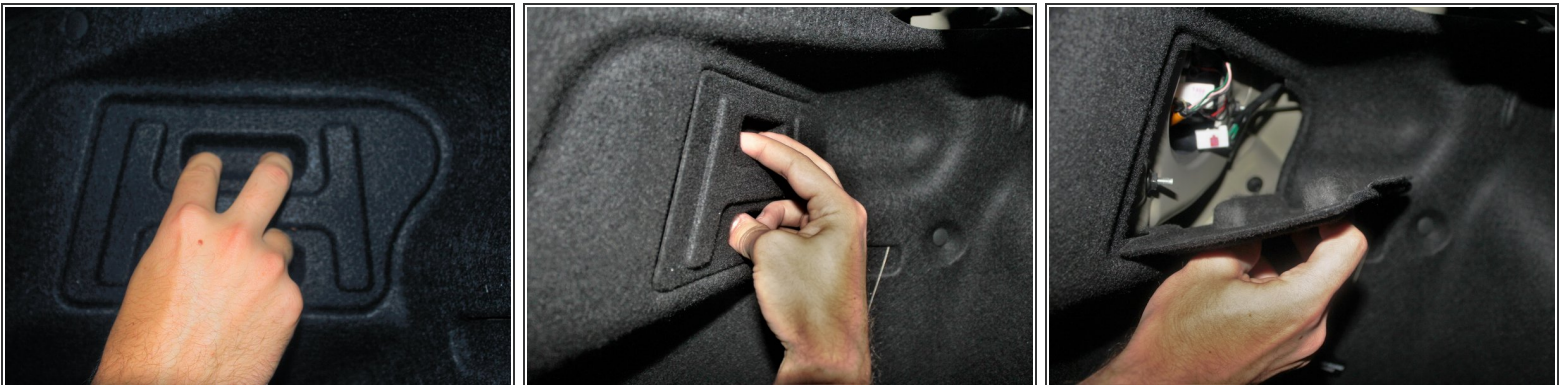
- [Sylvania Basic T Mini Bulb 1157LL](#) (1)

Step 1 — Brake Light



- Open the trunk and locate the tail light compartment behind the rear wheel well.
- This guide will serve for both brake lights.

Step 2



- Squeeze and pull back on the felt-like access panel to expose the tail light assembly.

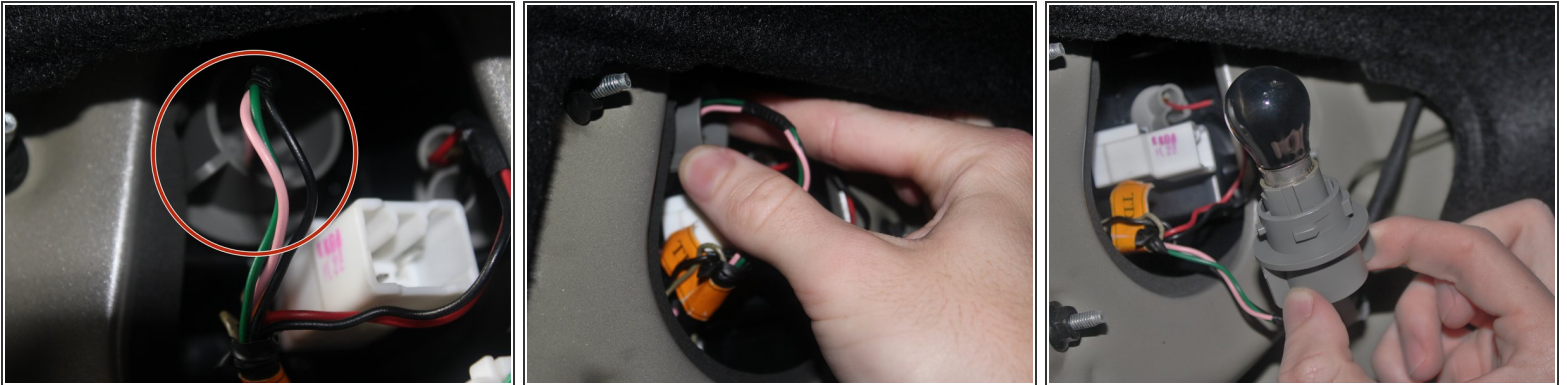
Step 3



- Squeeze down on the top tab of the battery connector. Then, pull the connector out.

 **Be sure to properly disconnect the battery to ensure safety when replacing the bulb.**

Step 4



- The grey brake light holder is connected to three wires. (Pink, Green, and Black as displayed)

 **Be sure not to pull on the three wires.**

- Twist the holder counter-clockwise using the two protruding tabs. Pull out the holder once unlocked.

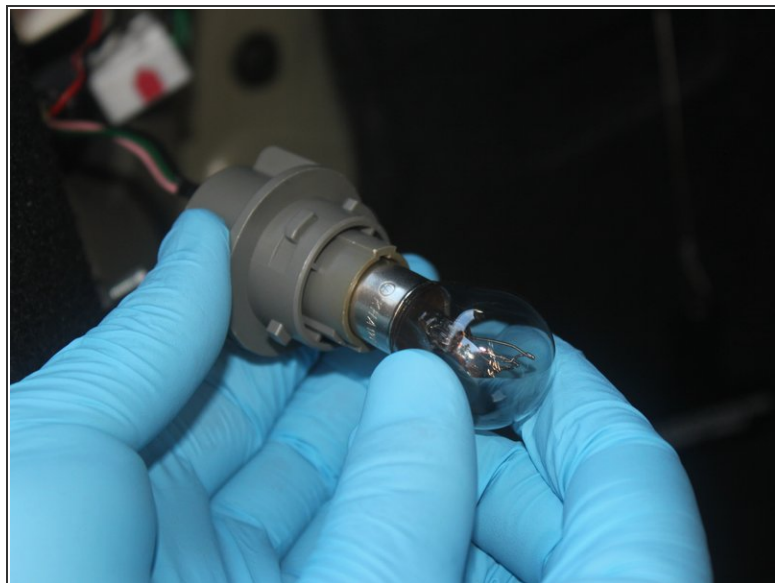
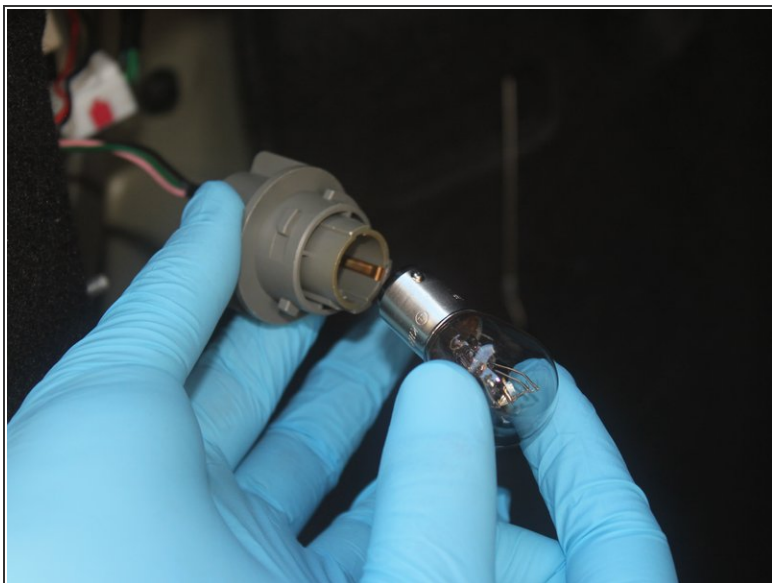
Step 5





- Twist the dead bulb counter clockwise to unlock it from the holder.

⚠ Be sure not to squeeze too hard on the light bulb as it may shatter or break.

Step 6



-  **Be sure to place latex gloves on prior to opening and touching the new bulb.**
-  Align the new bulb with the notch in the holder. Place bulb inside holder.
 - Gently push the bulb in and simultaneously twist clockwise to lock it into the holder.

To reassemble your car, follow these instructions in reverse order.