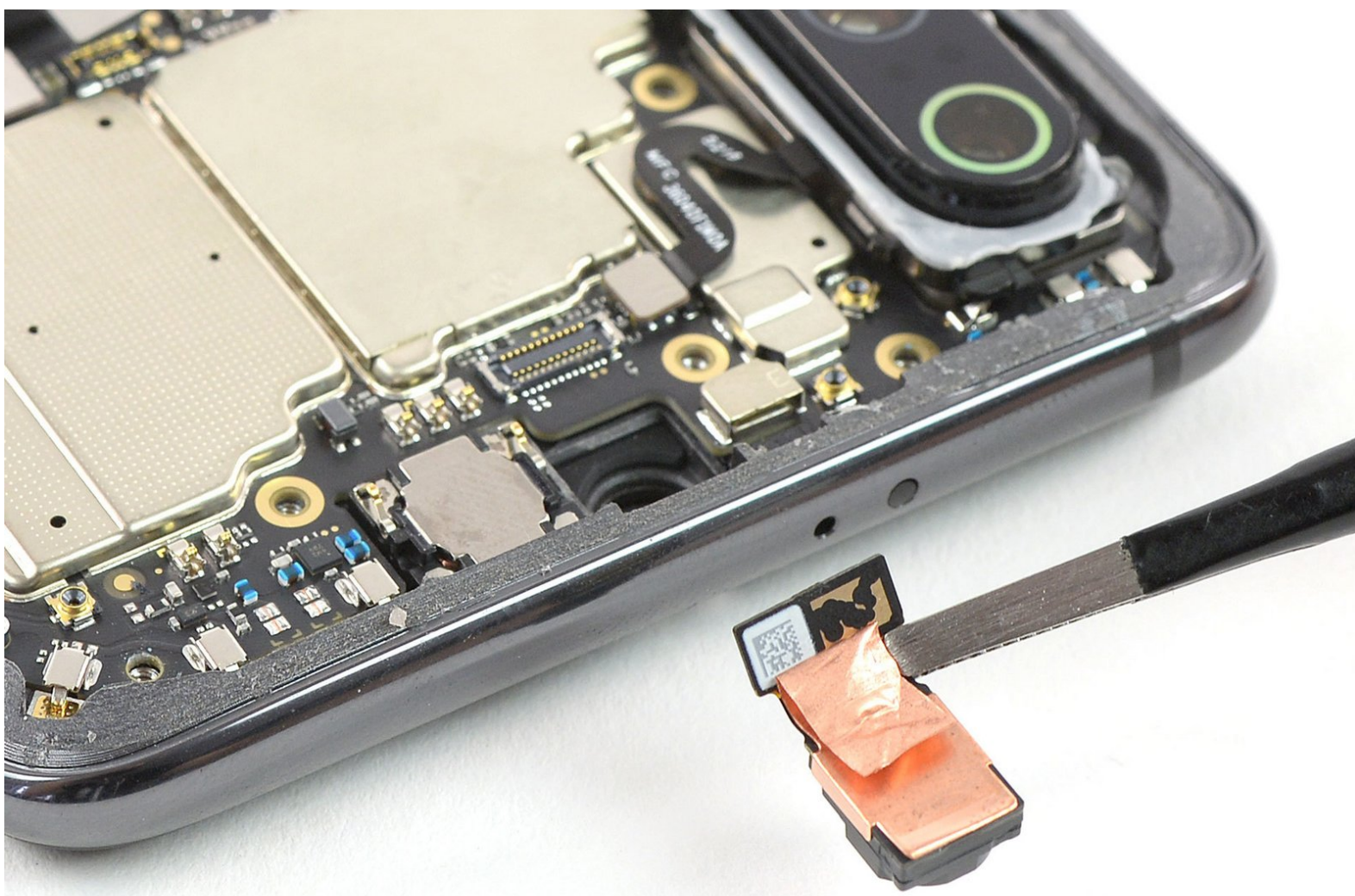




Xiaomi Mi 9 Front Camera Replacement

This guide shows how to remove and replace a broken or defective front camera in the Xiaomi Mi 9.

Written By: Dominik Schnabelrauch



INTRODUCTION

Use this guide to remove and replace a broken or defective front camera in your Xiaomi Mi 9.

You'll need **replacement adhesive** to reattach components when reassembling the device.

TOOLS:

- [Spudger](#) (1)
 - [Suction Handle](#) (1)
 - [iFixit Opening Picks set of 6](#) (1)
 - [iOpener](#) (1)
 - [Phillips #00 Screwdriver](#) (1)
 - [Tweezers](#) (1)
-

Step 1 — Rear Glass



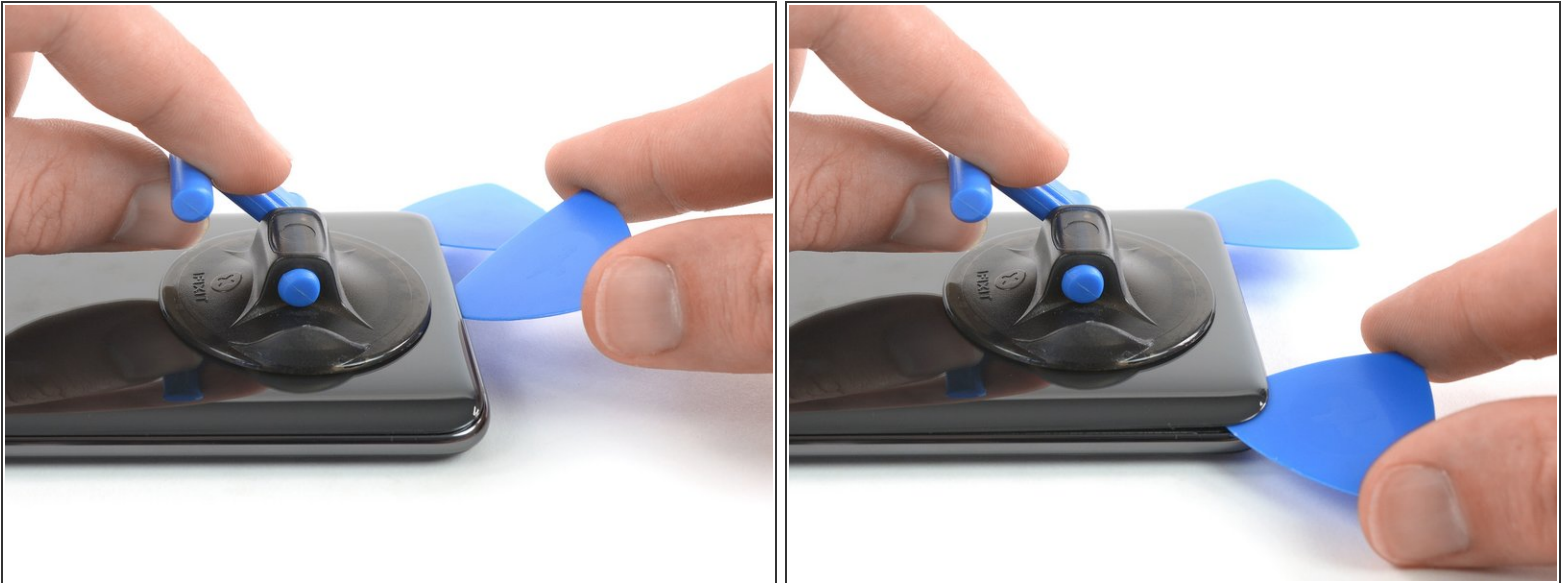
- Before you begin, switch off your phone.
- Apply a [heated iOpener](#) to the rear glass to loosen the adhesive beneath the edges. Apply the iOpener for at least two minutes.

Step 2



- Secure a suction handle to the lower edge of the rear glass, as close to the edge as possible.
 - ⓘ If the phone's rear glass is cracked, the suction handle may not stick. Try [lifting it with strong tape](#), or superglue the suction handle in place and allow it to cure so you can proceed.
- Lift the rear glass with the suction handle to create a gap between the glass and the frame.
- Insert an opening pick into the gap.
 - ⓘ If you have trouble, apply more heat to further soften the adhesive. Follow the iOpener instructions to avoid overheating.
- Slide the opening pick to the bottom right corner of the phone.

Step 3



- Insert a second opening pick and slide it to the bottom left corner to cut the adhesive.
- Leave the opening picks in place to prevent the adhesive from resealing.

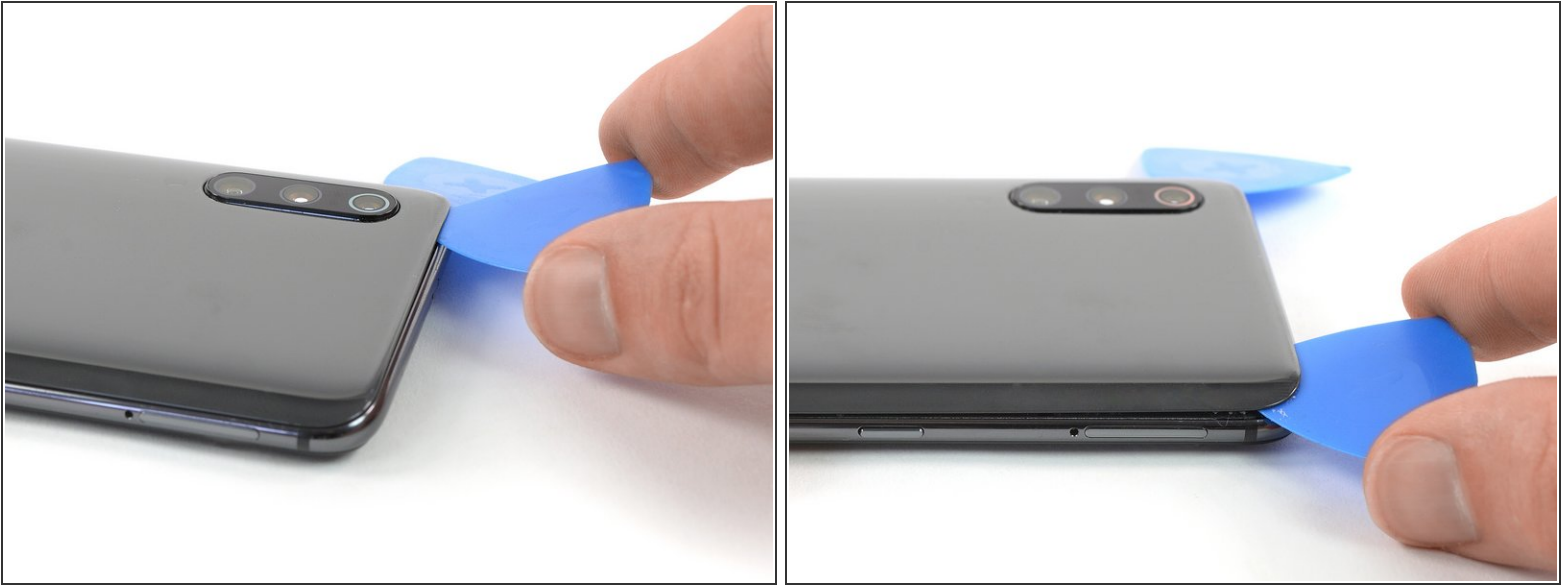
Step 4



- Insert a third opening pick at the bottom left corner.
- Start to slide the opening pick from the bottom left corner along the side of the Xiaomi Mi 9 to cut the adhesive.
- ⓘ Be aware of the rear cameras and only insert the tip of the opening pick. As the adhesive cools down it gets harder to cut. If necessary [use your iOpener](#) to reheat it.
- Leave the opening pick in the top left corner to prevent the adhesive from resealing.

This document was generated on 2020-11-28 07:35:00 AM (MST).

Step 5



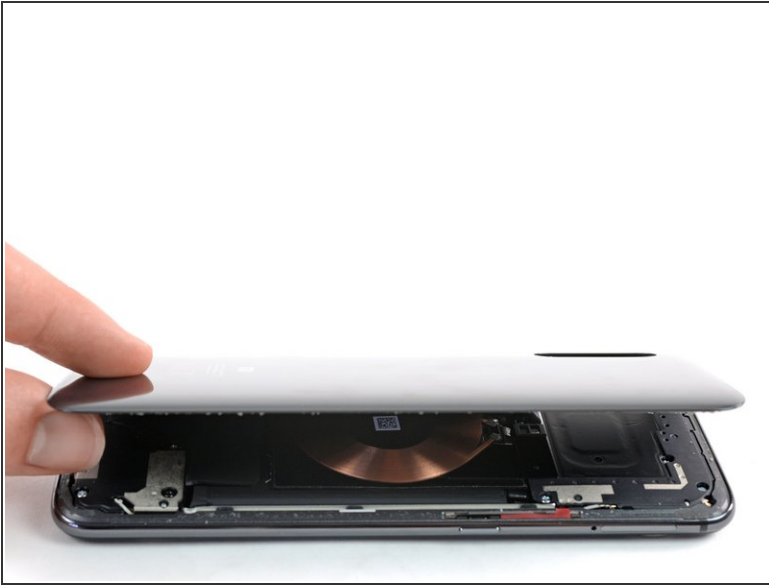
- Insert a fourth opening pick under the top left corner of the rear glass.
- Slide the opening pick along the top to cut the adhesive.
- Leave the opening pick in the top right corner to prevent the adhesive from resealing.

Step 6



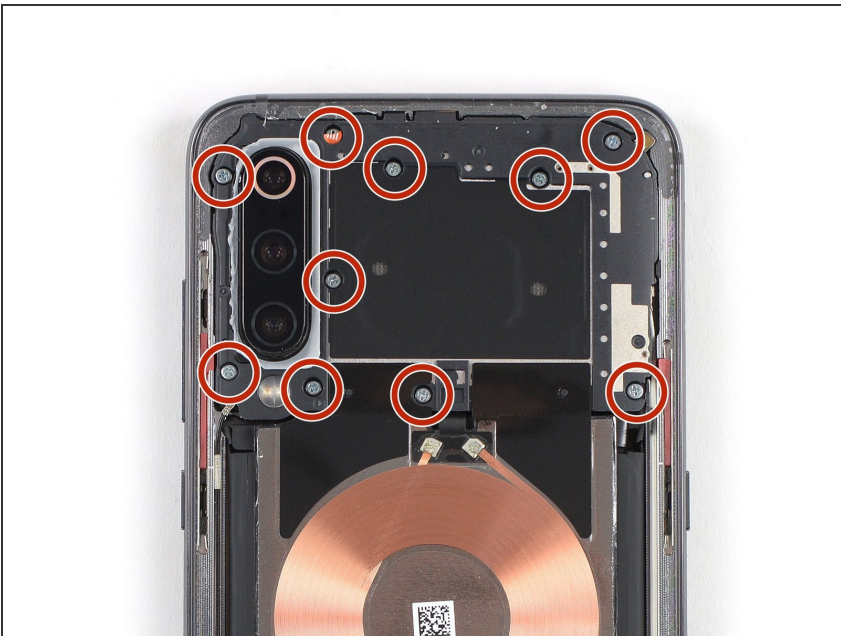
- Insert a fifth opening pick at the top right corner of the phone.
- Slide the opening pick along the right edge to cut the remaining adhesive.

Step 7



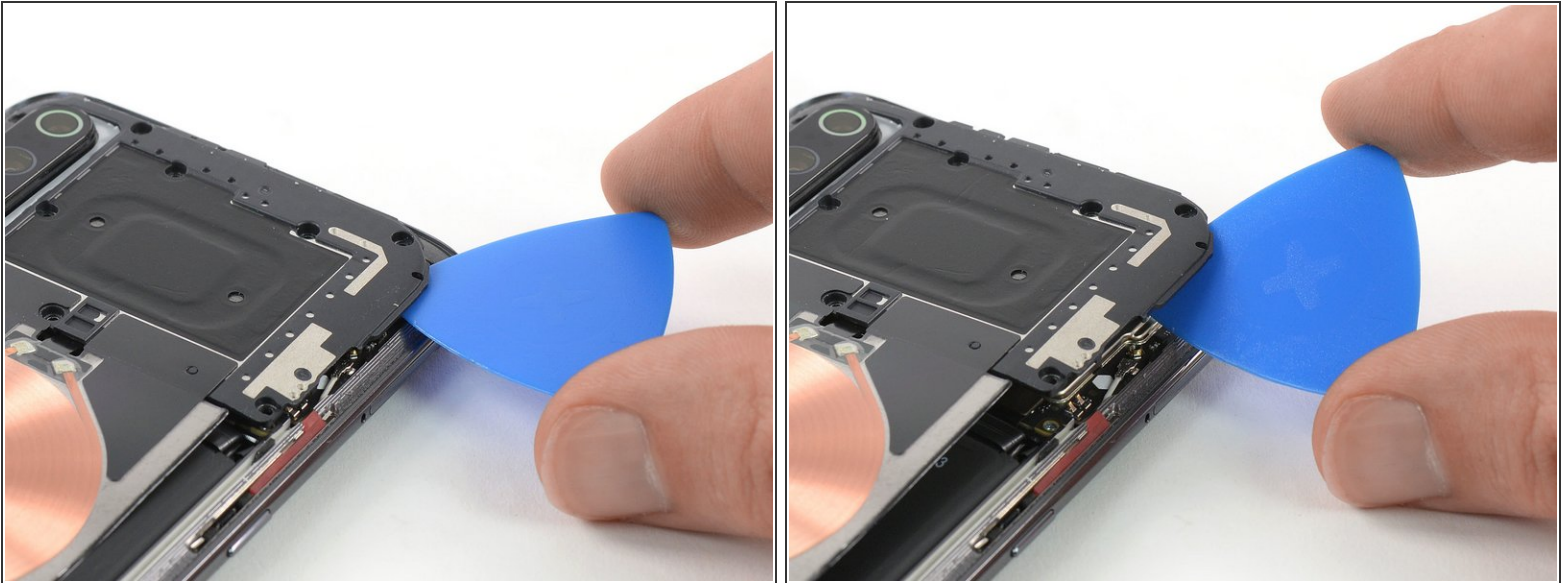
- Carefully lift the rear glass and remove it.
- ☑ Before installing new adhesive and reassembly, remove any remaining adhesive from the phone, and clean the glued areas with isopropyl alcohol and a lint-free cloth.

Step 8 — Motherboard Cover with Charging Coil



- Remove the ten Phillips #00 screws (3 mm length) that secure the motherboard cover.
- ⓘ There might be tamper proof sticker on some of the screws.

Step 9



- Insert an opening pick at the top right corner of the motherboard cover.
- Twist the opening pick sideways to pry up and slightly lift the motherboard cover.

Step 10



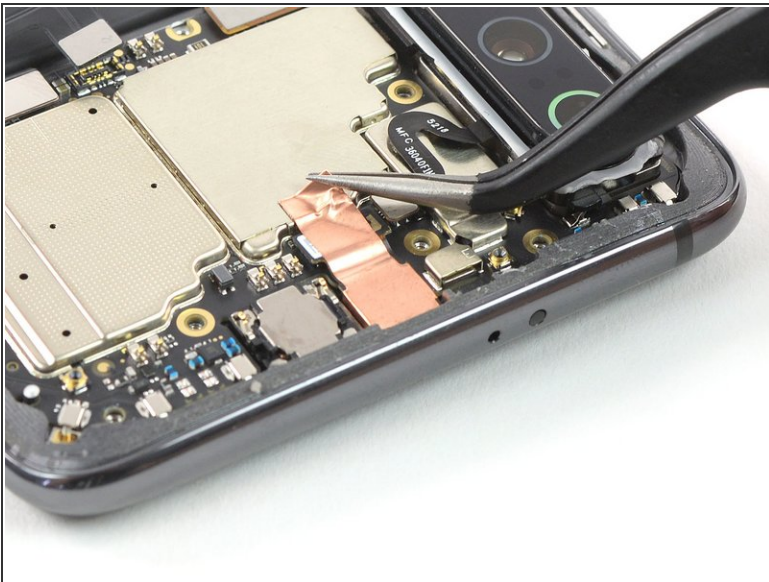
- Carefully remove the motherboard cover including the charging coil / NFC antenna.

Step 11 — Battery Disconnect



- Use a spudger to pry up and disconnect the battery flex cable.

Step 12 — Front Facing Camera



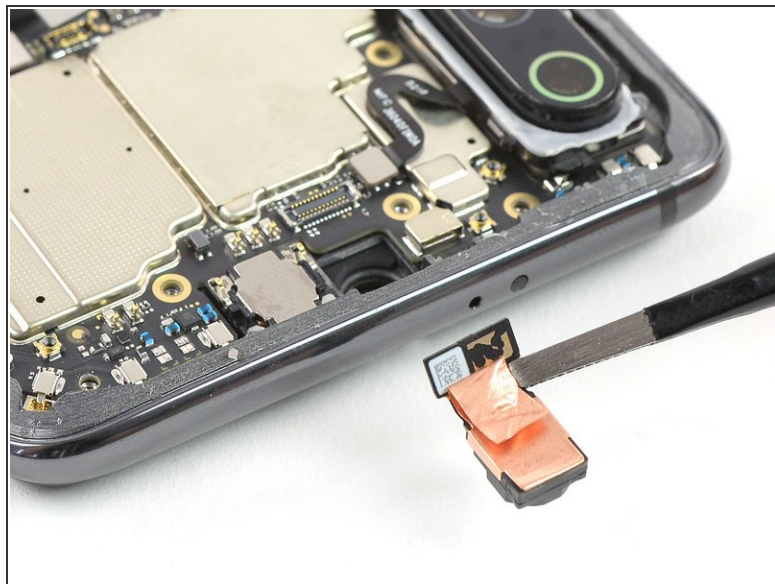
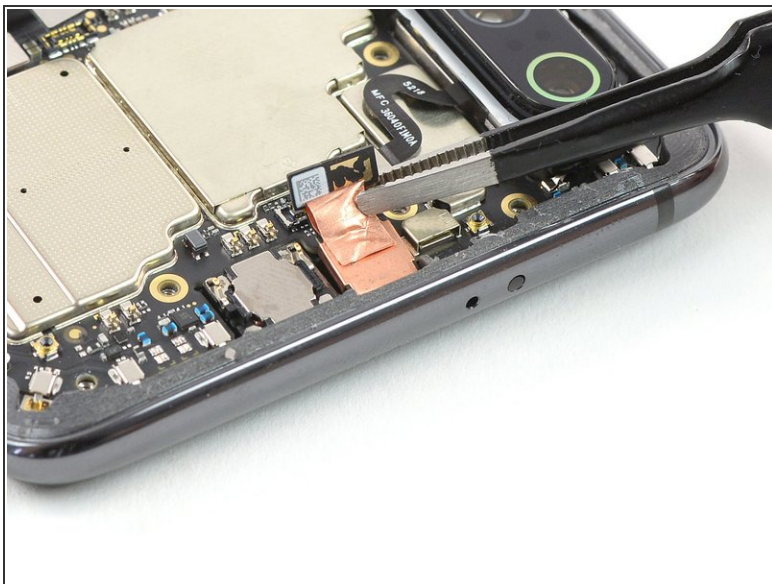
- Use a pair of tweezers to peel the copper tape off the motherboard and fold it out of the way.

Step 13



- Use the flat end of a spudger to pry up and disconnect the flex cable of the front camera.

Step 14



- Use a pair of tweezers to lift the front camera out of its recess and remove it.

If possible, turn on your phone and **test your repair** before installing new adhesive and resealing the phone.

To reassemble your device, follow these instructions in reverse order.

Take your e-waste to an [R2 or e-Stewards certified recycler](#).

Repair didn't go as planned? Check out our [Answers community](#) for troubleshooting help.