



# Nintendo GameCube Controller C Stick Replacement

This guide will remove the C-stick.

Written By: Sean Michel



---

## INTRODUCTION

This guide will help you install the C Stick. The C Stick is the yellow joystick. This guide should be helpful if the [C Stick has gone rogue](#).

---



### TOOLS:

- [Tri-point Y0 Screwdriver](#) (1)
  - [Tweezers](#) (1)
-

## Step 1 — Back Panel



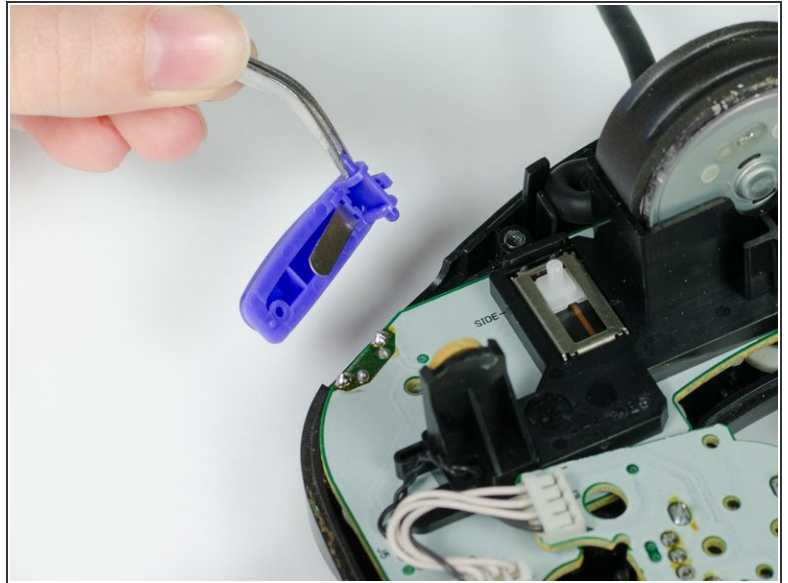
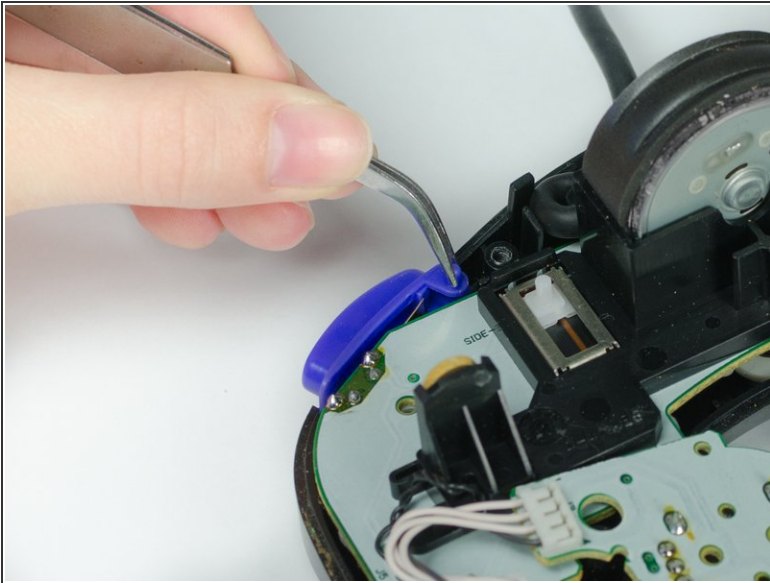
- Place the controller (buttons down) on a solid surface.
- Remove the six 9.2mm Tri-wing Y0 screws that hold the back panel in place.

## Step 2



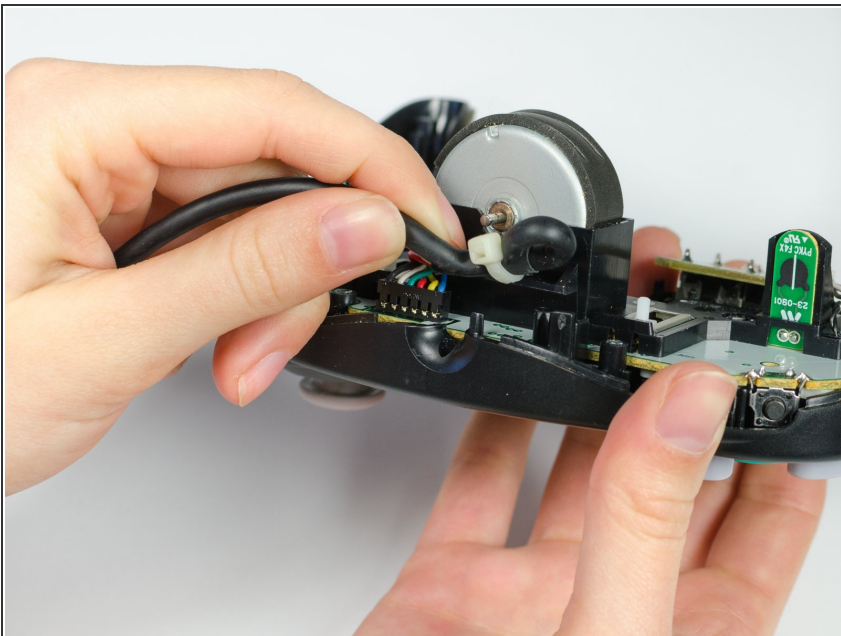
- Gently lift the back panel up, separating it from the front panel.
- ⓘ Some of the buttons may fall out if they are knocked around.

### Step 3 — Z Button



- Grab the Z-button by the peg with tweezers and lift it out of the controller.
- ✦ During re-assembly, make sure the plastic rim and spring fit into the slot provided, or else the case will not shut.

### Step 4 — Circuit Board



- Carefully unhook the cable that is looped around the peg.

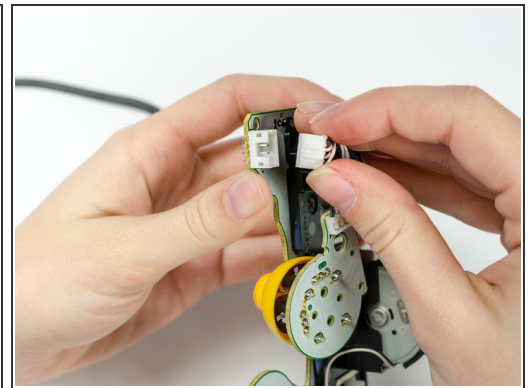
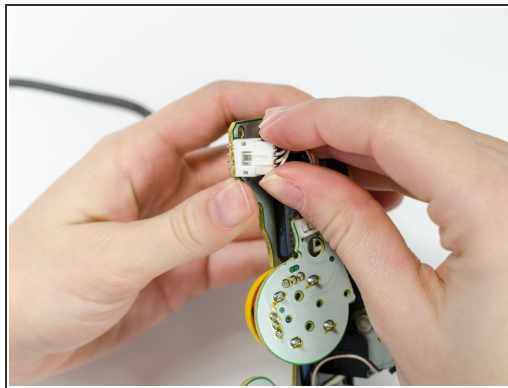
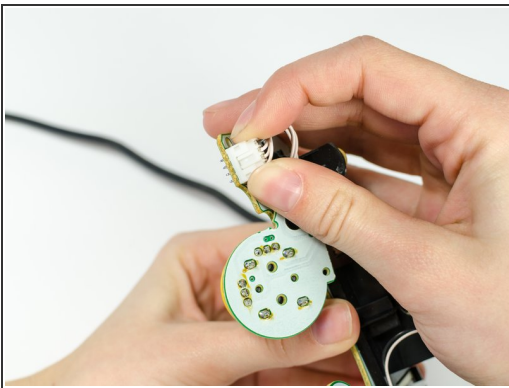


## Step 5



- Lift the circuit board out of the controller.
- ⓘ Do not grab the rumble motor to lift the circuit board as shown in the picture. It will in many cases just remove the rumble motor. Instead, grab the edges of the board.

## Step 6 — C Stick



- Use your fingers to grab the two sides of the connector and gently wiggle out.

⚠ Be sure not to pull on the cables. This may pull the cables out and damage your device even more.

## Step 7



- Grab the yellow cover by the base and pull it off.
- ☑ During reassembly, make sure the slots inside the joy stick line up so they can fit back together.

To reassemble your device, follow these instructions in reverse order.