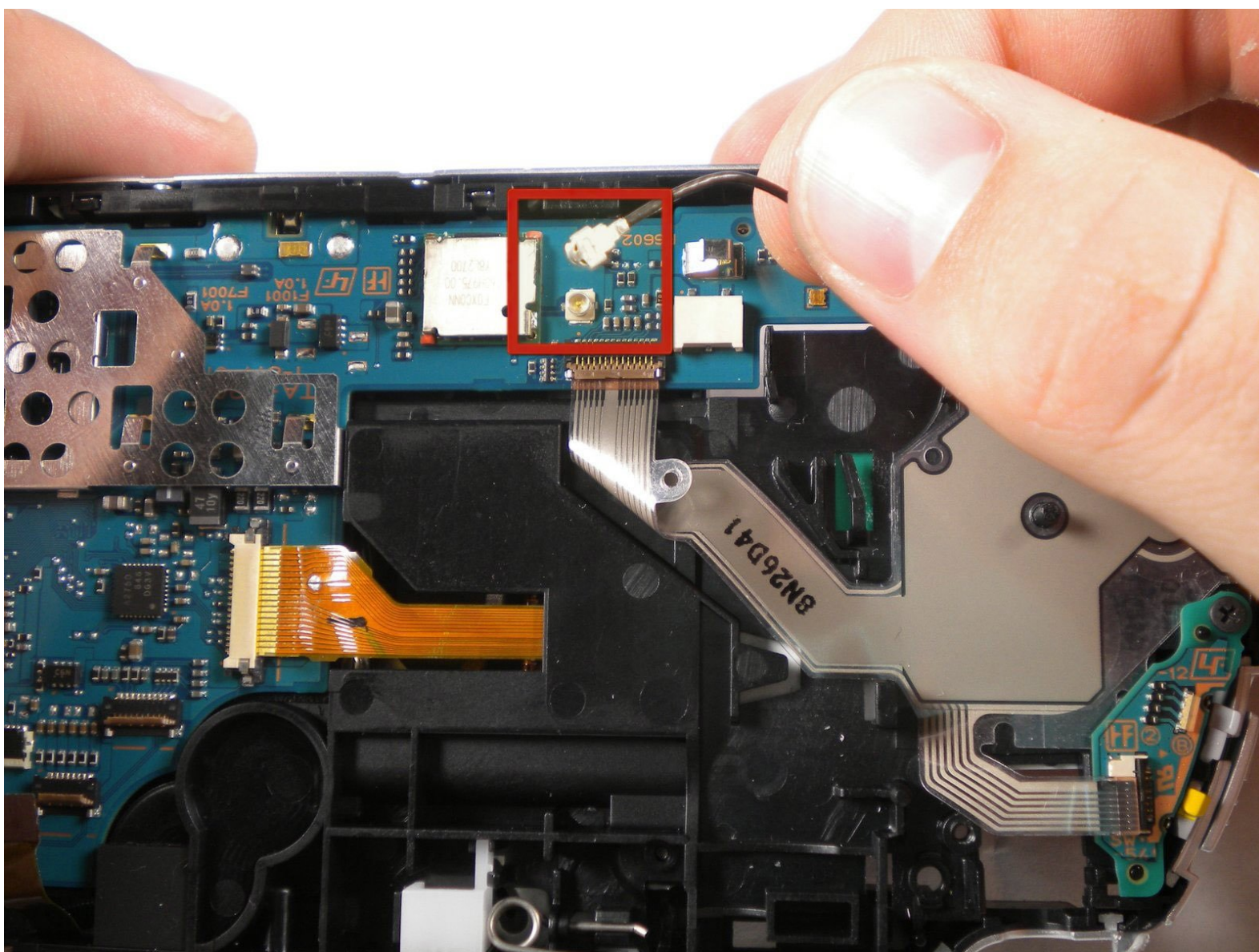




PSP 300x WI-FI Antenna Replacement/Removal

This guide shows you how to remove, and replace if need be, the WI-FI antenna that comes built in the PSP 300x units.

Written By: Sean Daniels





TOOLS:

- [Phillips #00 Screwdriver](#) (1)
- [Spudger](#) (1)



PARTS:

- [Sony PSP 3000 Wi-Fi Antenna](#) (1)

Step 1 — Battery



- Place the PSP face down and locate the battery cover on the left side of the device.
- Lift and remove the battery cover to reveal the battery.
- Remove the battery.

Step 2 — Casing



- Peel back the warranty sticker that is behind the battery with a spudger or your fingernail.
- Unscrew all four screws from the back of the PSP with the Phillips #00 Screwdriver.
 - Two are located behind the battery's warranty sticker.
 - Two are located on the right side of the PSP.

Step 3



- Unscrew two screws from the top of the PSP.
- Turn the PSP around, and unscrew a single screw from the bottom edge (next to the barcode).

Step 4



- Slide the spudger in between the outer casing of the PSP, beginning at the "R" shoulder button, and gently pry off the casing.
- Remove the front casing completely.

Step 5 — LCD Screen



- Push the homebar to the right to release the tab on the right side of the LCD screen.

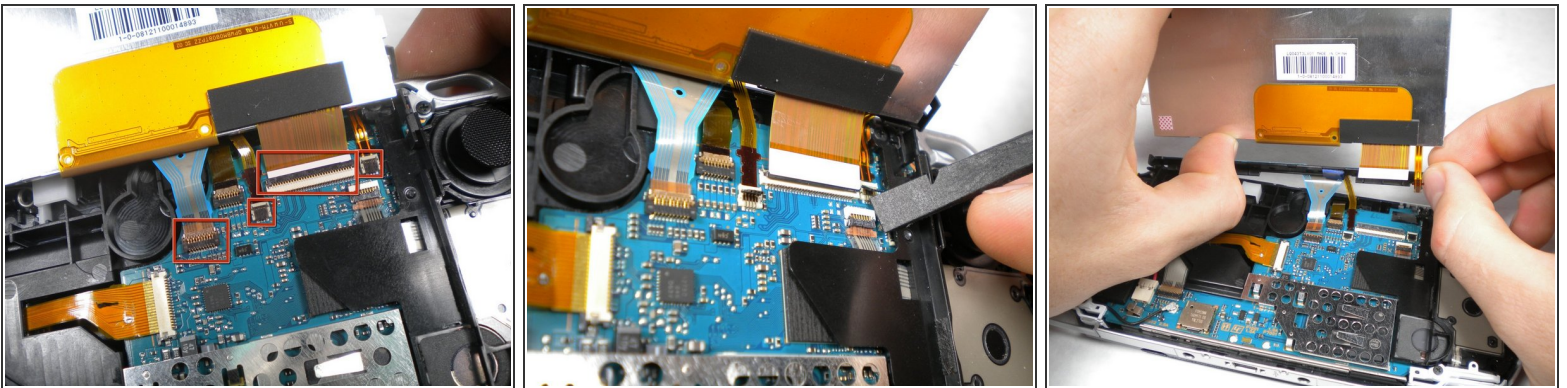
⚠ DO NOT completely remove the homebar, as it is still connected by ribbon cables.

- Slowly begin to lift the LCD screen off the PSP from the top edge.

⚠ Again, the LCD screen is attached by ribbon cables, so do not remove it completely.

ⓘ Orientation of PSP is flipped in photo.

Step 6 — LCD Ribbon Cables



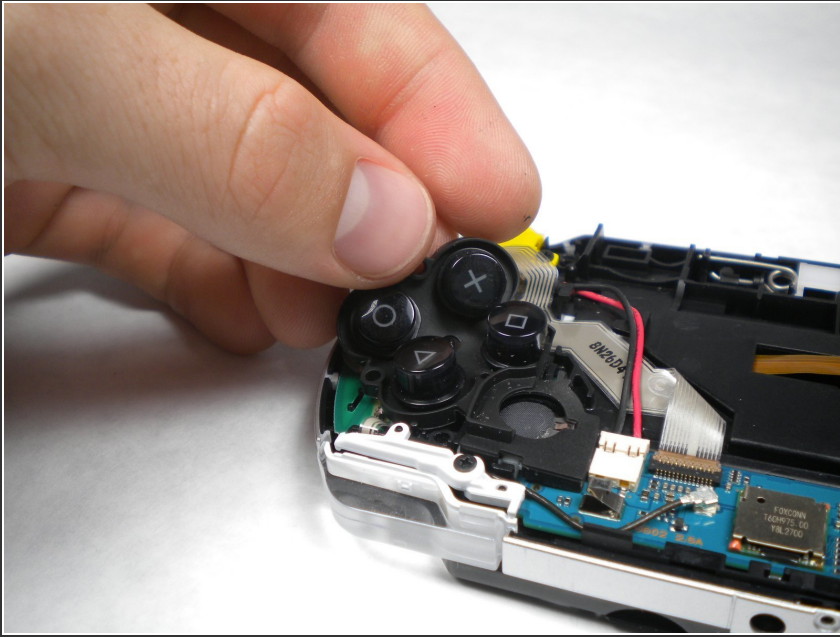
- Using a spudger or fingernail, flip the small black/brown locks on the four ribbon cable connectors up.

⚠ Ensure you DO NOT lift the white part on the connector.

- Pull all four ribbon cables out, and remove the LCD screen and homebar from the PSP.

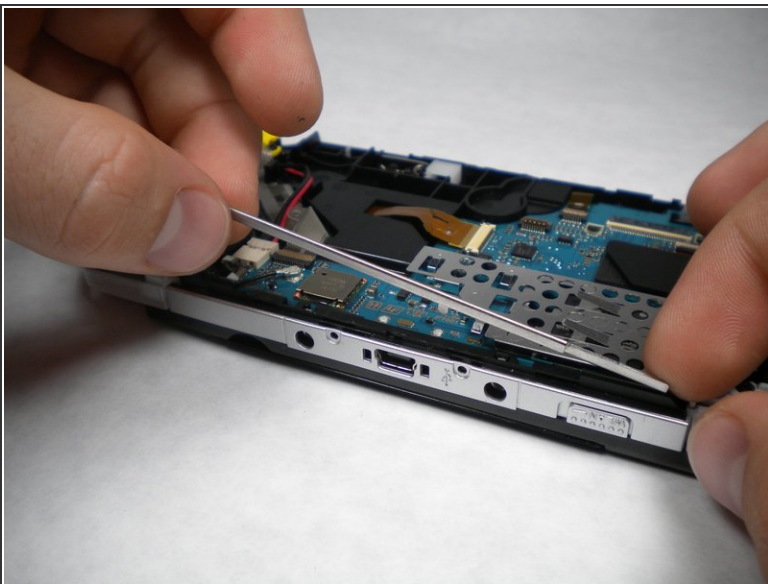
⚠ Be careful removing the two small ribbons from the LCD connector, they are very delicate.

Step 7 — Buttons



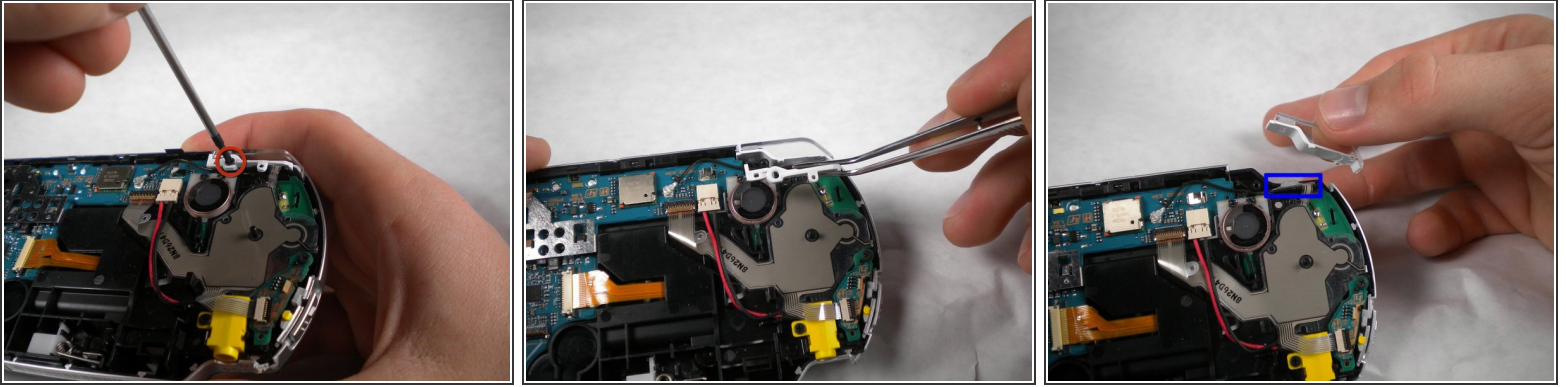
- If your button pads did not get removed when removing the front casing, now would be a good time to remove them.

Step 8 — LCD Bracket Tab



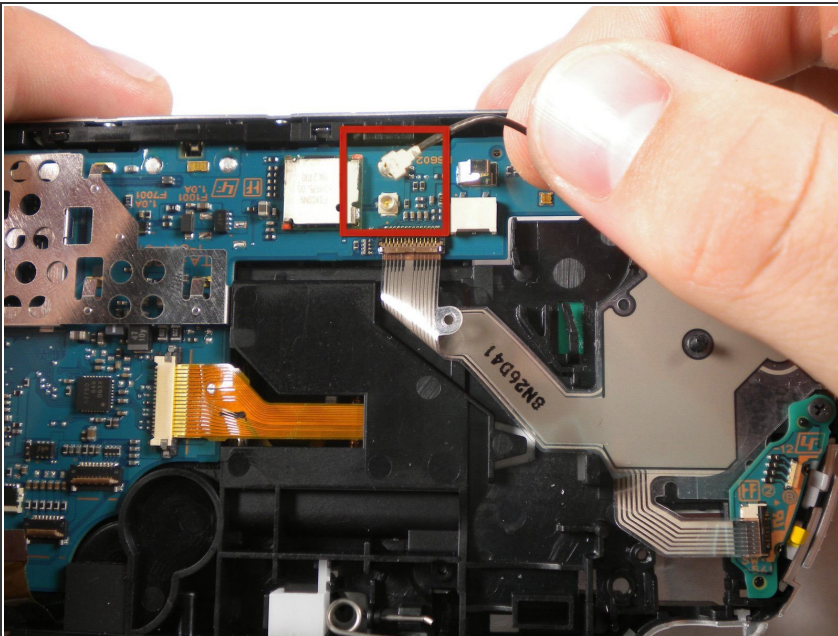
- Remove the thin metal tab that lies above the LCD screen (this helps hold the LCD screen in place).
- ☑ Upon reassembly, make note that the stamped lettering faces down, and the large tab fits just above the motherboard to the right hand side of the left trigger.

Step 9 — Right Trigger Button



- Remove the screw securing the 'R' trigger.
 - Remove the white plastic piece that holds the 'R' trigger in place.
 - Remove the 'R' trigger from the PSP.
 - Using a spudger, lift up the 'R' trigger rubber button.
- ⚠ Be careful not to damage or accidentally disconnect the 'R' button ribbon cable.

Step 10 — Wi-Fi Antenna Cable



- Using your fingernails or a spudger, gently pry the antenna cable from its socket.
- Straighten up the antenna cable until it stands up vertically from the PSP.

Step 11 — Antenna Removal



 Proceed carefully. There are no images available for the rest of this guide.

- Using your fingernails or a spudger, peel up the top Sony product sticker, located in the battery socket, until all of the WI-FI antenna is visible.
- Using your fingernails or a spudger, peel off the antenna and remove.
- You can replace it with a new one if needed.

To reassemble your device, follow these instructions in reverse order.