



# iPad Mini CDMA Front Facing Camera Cable Replacement

Use this guide to replace the front-facing camera.

Written By: Walter Galan



# INTRODUCTION

Use this guide to replace the front-facing camera.

---

## TOOLS:

[iFixit Opening Tool](#) (1)

[Tweezers](#) (1)

[Spudger](#) (1)

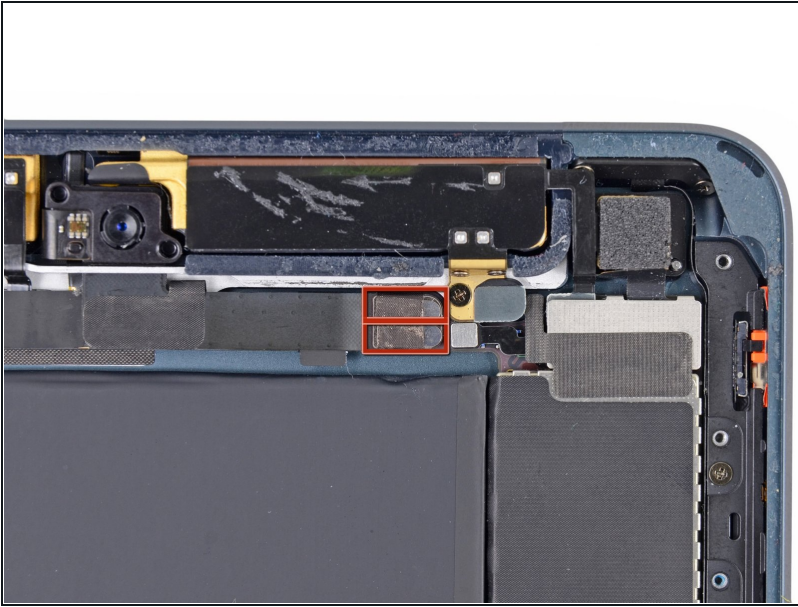
---

### Step 1 — Front Facing Camera Cable



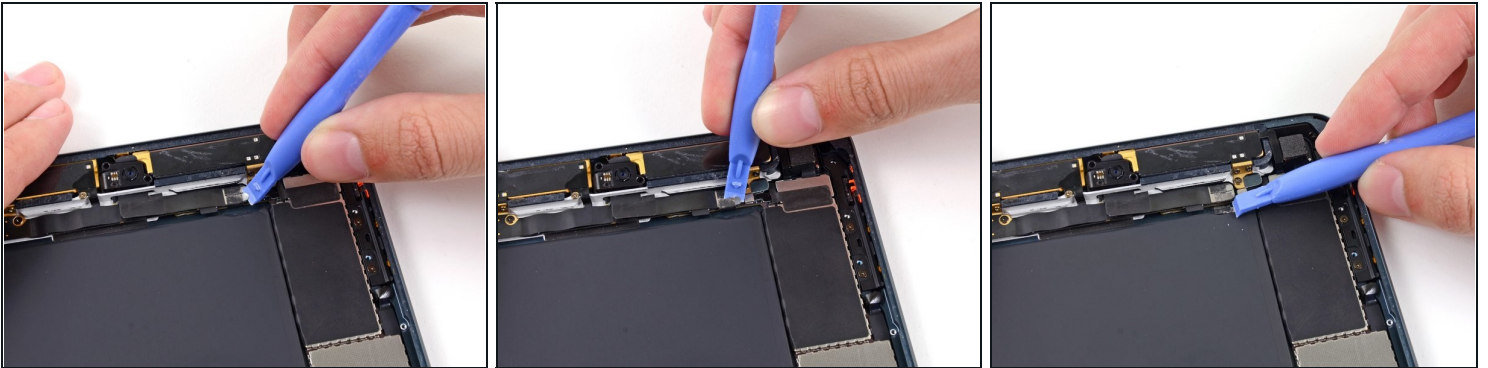
- Use a pair of [tweezers](#) to peel up and remove the small piece of tape covering the front-facing camera cable connector.

## Step 2



- The front-facing camera cable connector is secured with pieces of tape that wrap up around the sides of the cable and are fastened to two small metal plates.
- In the next two steps, you will be prying the two metal plates up and out from the center of the cable.

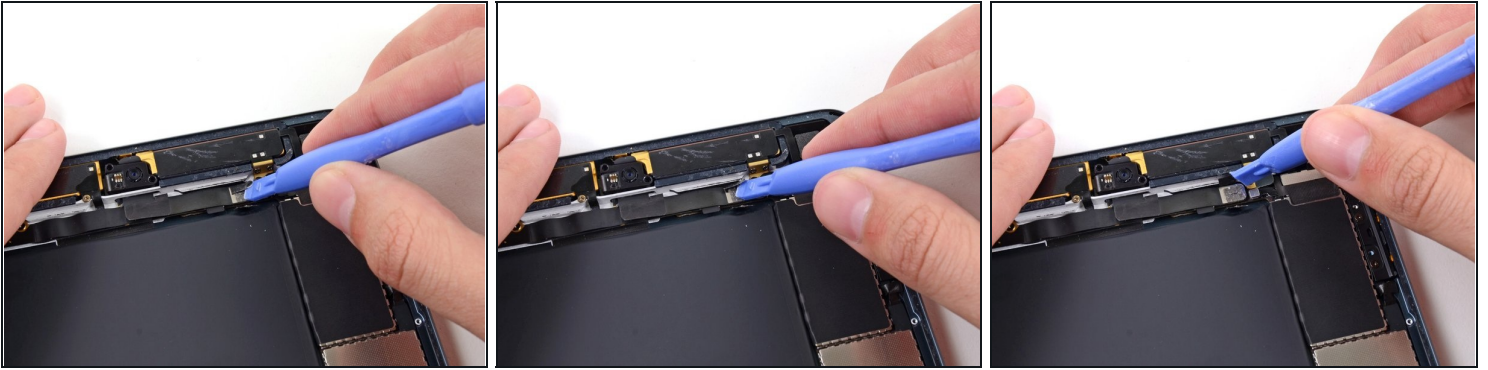
## Step 3



- Use a plastic opening tool to gently pry the lower metal plate up from the front-facing camera cable connector.
- Being careful not to break the plate or the tape attached to it, pry it up and fold it away from the front-facing camera cable connector.



## Step 4



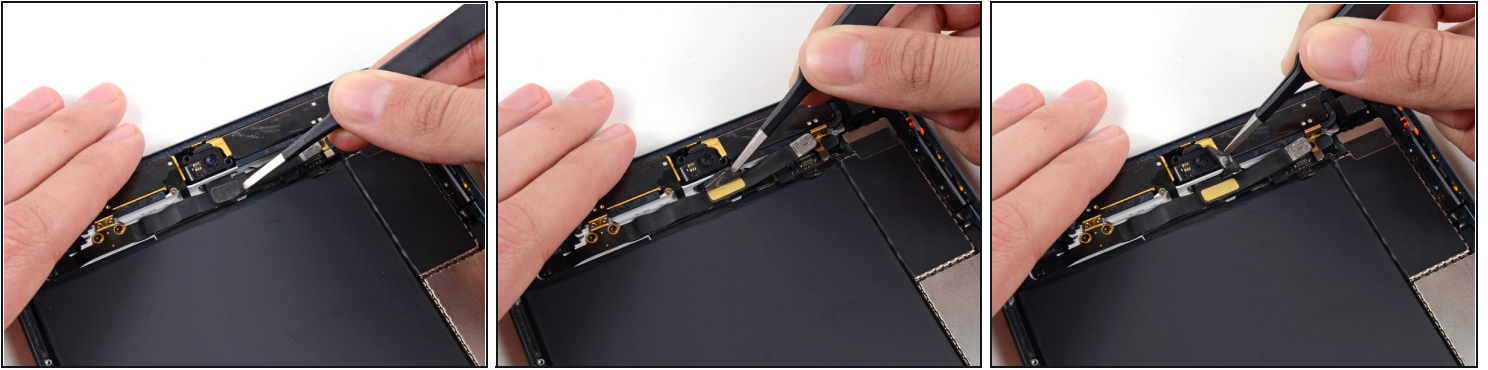
- Gently pry the second metal plate up from the front-facing camera cable connector.
- Again, carefully pry the plate up and away from the front-facing camera cable connector.

## Step 5



- Use a plastic opening tool to pry the front-facing camera cable's connector up from its socket on the logic board.

## Step 6

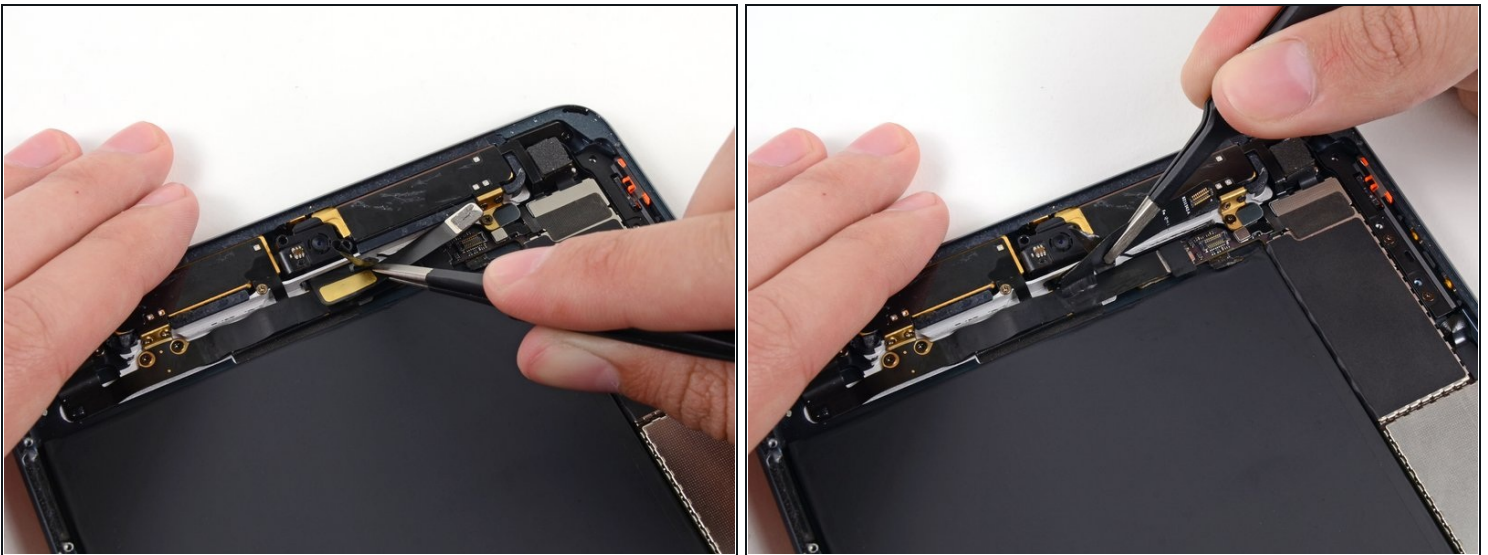


- Use a pair of tweezers to peel up the top of the rectangular piece of tape covering the bend in the front-facing camera cable.

⚠ Do not try to remove the tape, as it is connected below the cable.

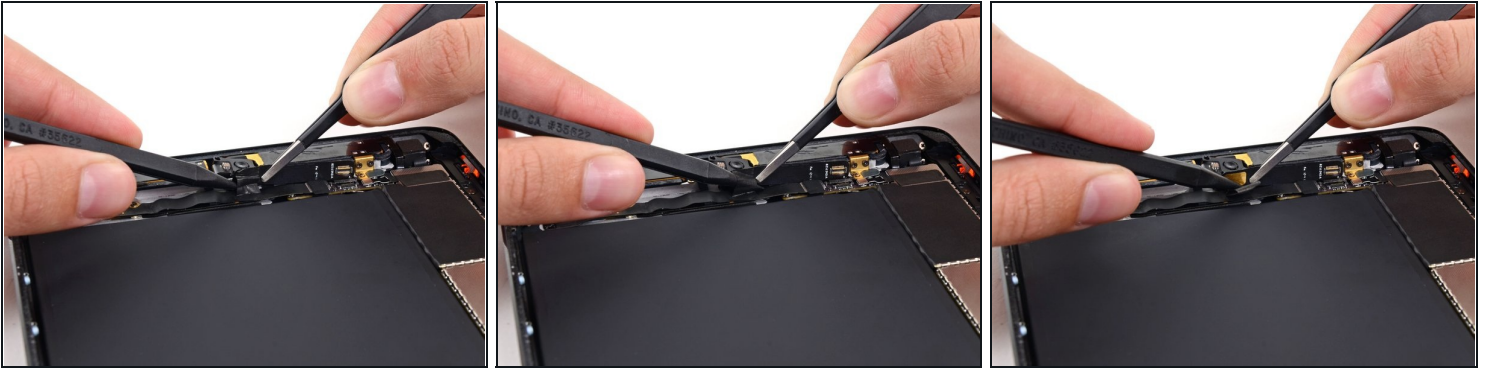
- Bend the tape up out of the way of the front-facing camera cable.

## Step 7



- Gently fold the front-facing camera cable upwards (roughly at a 90-degree angle), exposing the bottom side of it.

## Step 8



- While holding the front-facing camera cable up, use the tip of a spudger to separate the piece of tape adhered to the bottom side of the corner of the cable.
- ① The tape is folded in half to attach to both the underside of the front-facing camera cable and the top side of the cable directly beneath it (headphone jack cable).

---

To reassemble your device, follow these instructions in reverse order.