



# LG Tribute 5 Speaker Replacement

How to replace the front speaker in your LG Tribute 5, model S675.

Written By: Renee Dawn Nelson



---

## INTRODUCTION

This guide will walk you through replacing your LG Tribute 5's front speaker. If your audio is distorted or not working on the front of the phone, replacing the front speaker may fix this issue.

---

### TOOLS:

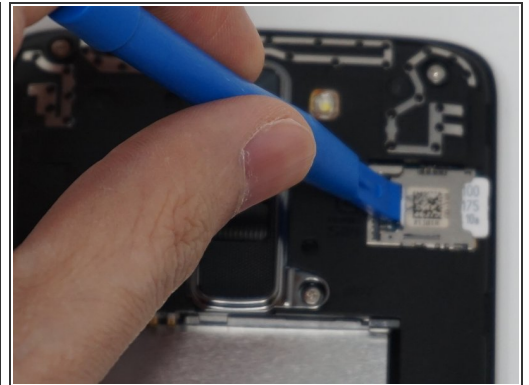
- [iFixit Opening Tools](#) (1)
  - [JIS #00 Screwdriver](#) (1)
-

## Step 1 — Battery



- Using an iFixit opening tool, gently pull outward on the cutout on the bottom left corner of the phone to remove the back cover.

## Step 2



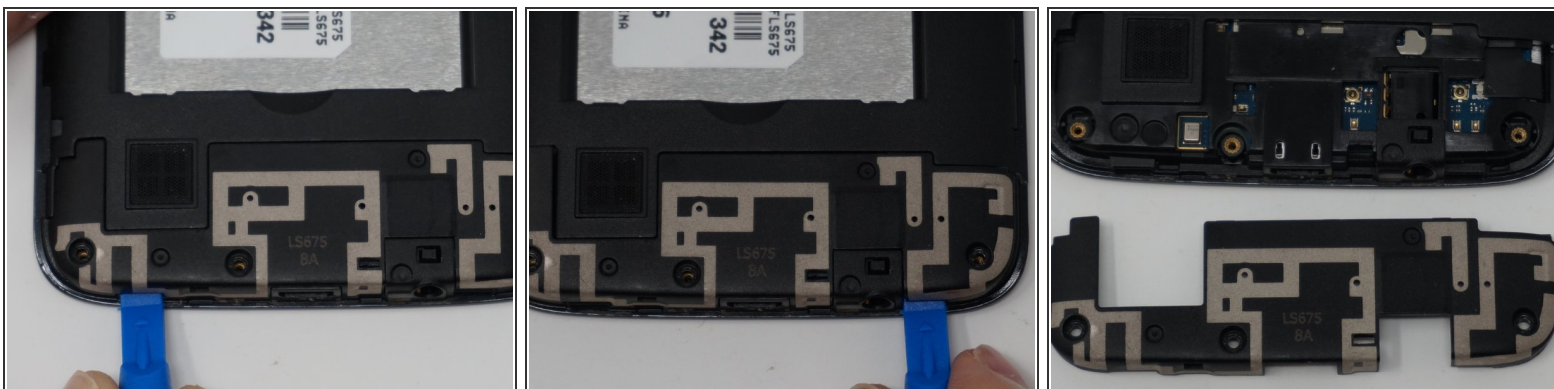
- Gently lift the battery out from the compartment.
- Use an iFixit opening tool to slide out the SD card and nano sim card from the device as shown.

## Step 3 — Front Speaker



- Remove the nine 2mm JIS #00 screws from the mid-frame.

## Step 4



- Using an iFixit opening tool, remove the antenna extender located at the bottom.



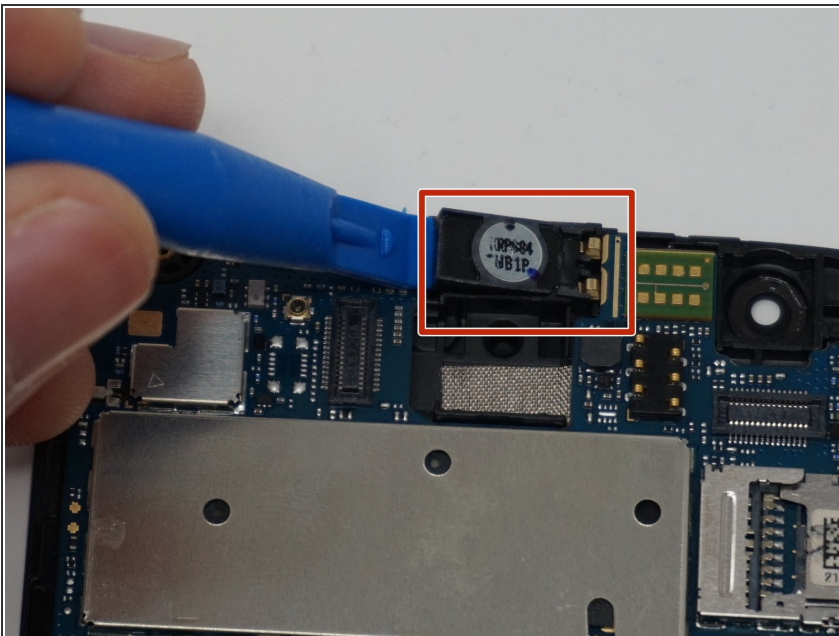
## Step 5



- Gently remove the mid-frame using an iFixit opening tool.

⚠ Avoid applying too much force when separating the mid frame. Too much force can bend or damage the device.

## Step 6



- Using an iFixit opening tool, gently pull up the front speaker from its compartment located on the top of the motherboard.

To reassemble your device, follow these instructions in reverse order.