



LG Tribute 5 Battery Replacement

This guide will show you how to replace the battery in your LG Tribute 5, model LS 675.

Written By: Renee Dawn Nelson



INTRODUCTION

This guide will show you how to replace the battery in your LG Tribute 5, model LS675. If your phone does not hold a charge, it might be a faulty battery. Replacing your phone's battery will fix this issue.

TOOLS:

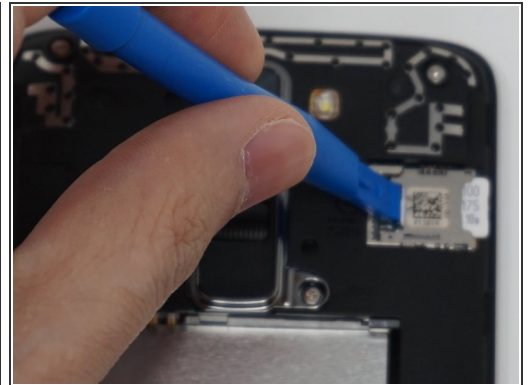
- [iFixit Opening Tools](#) (1)
-

Step 1 — Battery



- Using an iFixit opening tool, gently pull outward on the cutout on the bottom left corner of the phone to remove the back cover.

Step 2



- Gently lift the battery out from the compartment.
- Use an iFixit opening tool to slide out the SD card and nano sim card from the device as shown.

To reassemble your device, follow these instructions in reverse order.