



LG Tribute 5 Display Replacement

How to replace the display on the LG Tribute 5. Model LS675.

Written By: Logan Reid Howell



INTRODUCTION

This guide will walk you through replacing the display and touch screen on your LG Tribute 5. This can resolve issues such as an unresponsive touch screen, a display that is damaged or does not work, or a cracked glass display. Use caution when handling a cracked display to prevent cuts.



TOOLS:

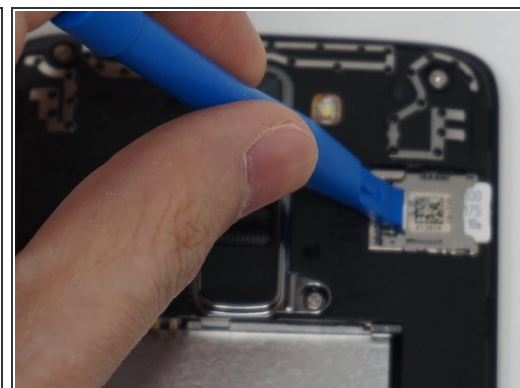
- [iFixit Opening Tools](#) (1)
 - [JIS #00 Screwdriver](#) (1)
-

Step 1 — Battery



- Using an iFixit opening tool, gently pull outward on the cutout on the bottom left corner of the phone to remove the back cover.

Step 2



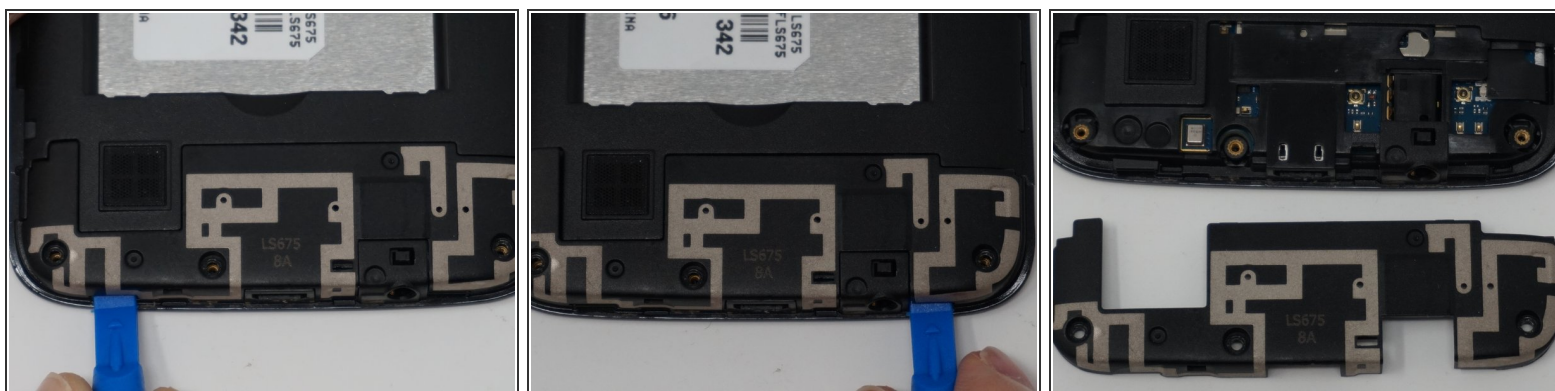
- Gently lift the battery out from the compartment.
- Use an iFixit opening tool to slide out the SD card and nano sim card from the device as shown.

Step 3 — Display



- Remove the nine 2mm JIS #00 screws from the mid-frame.

Step 4



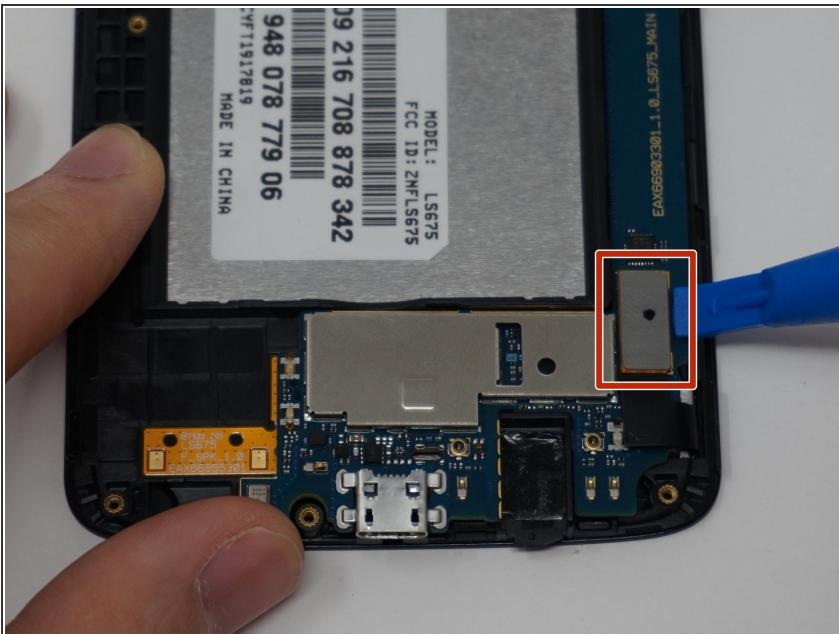
- Using an iFixit opening tool, remove the antenna extender located at the bottom.

Step 5



- Gently remove the mid-frame using an iFixit opening tool as shown.
- ⚠ Avoid applying too much force when separating the mid frame. Too much force can bend or damage the device.

Step 6



- Disconnect the flex cable from the motherboard with the iFixit opening tool.

Step 7



- Use an iFixit opening tool to separate the motherboard and the display.

To reassemble your device, follow these instructions in reverse order.