



Asus F555LA-AB31 Network Card Replacement

If your Asus F555LA-AB31 will not connect to...

Written By: David Burns



INTRODUCTION

If your Asus F555LA-AB31 will not connect to the network or if you experience intermittent connections, it may be time to replace your network card. Your network card connects your computer to a local area network (LAN) or the internet. If the network card has a faulty hardware component, the operating system might not show it as a connected device. It may also not reliably connect to networks or recognize networks in specific situations; such as when the laptop is hot or during extended use.

Before using this guide, verify the issue is not software related before replacing the network card. [Asus provides a support guide to troubleshooting wireless issues in this link.](#)

Electronics are sensitive to ESD. [Here is a link for using an anti-static mat and wristband.](#) The laptop must be unplugged before servicing to prevent electrical shock and hardware damage.



TOOLS:

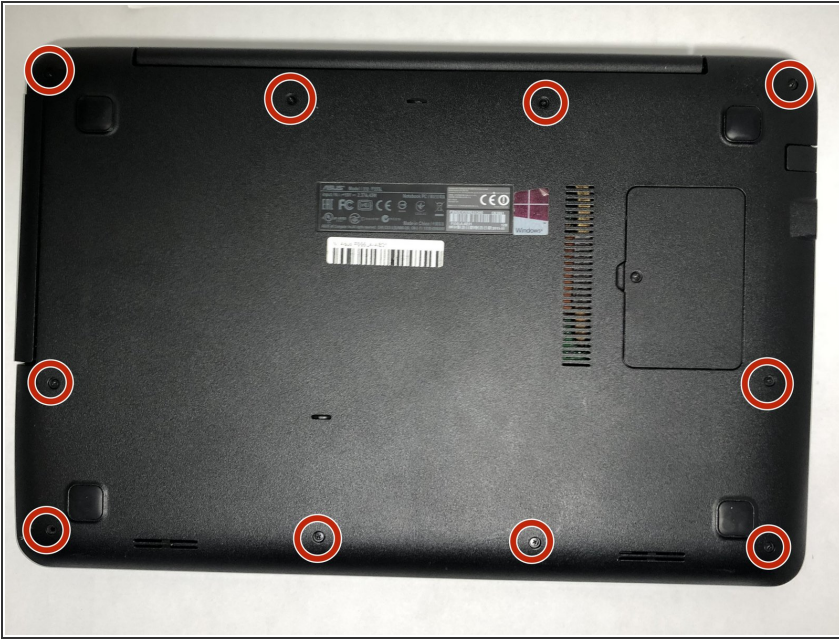
- [Phillips #0 Screwdriver](#) (1)
- [Anti-static mat + wrist band.](#) (1)



PARTS:

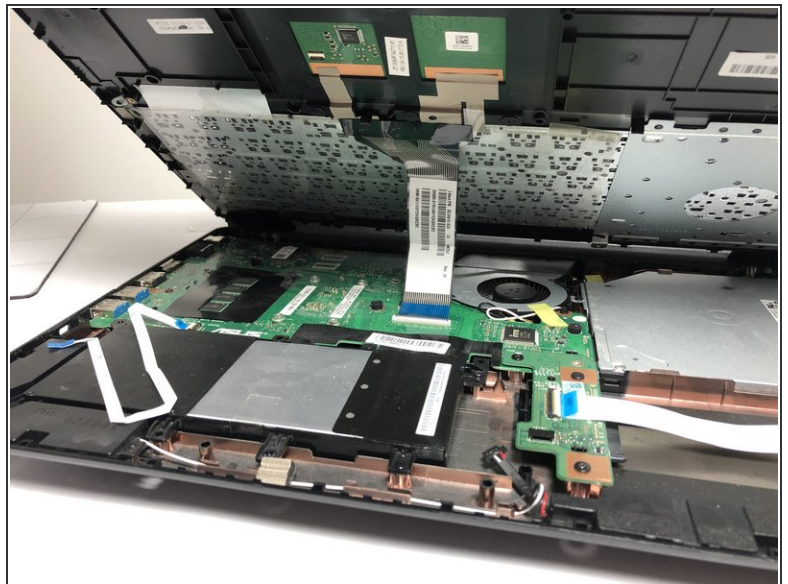
- [2.5" SATA Hard Drive](#) (1)
- [Asus C21N1347 Replacement Battery](#) (1)

Step 1 — CD Drive



- ✦ Turn off and unplug the device before starting repairing.
- Use the Phillips #0 screwdriver head to remove the ten 18mm Phillips #0 screws on the laptop's bottom.

Step 2

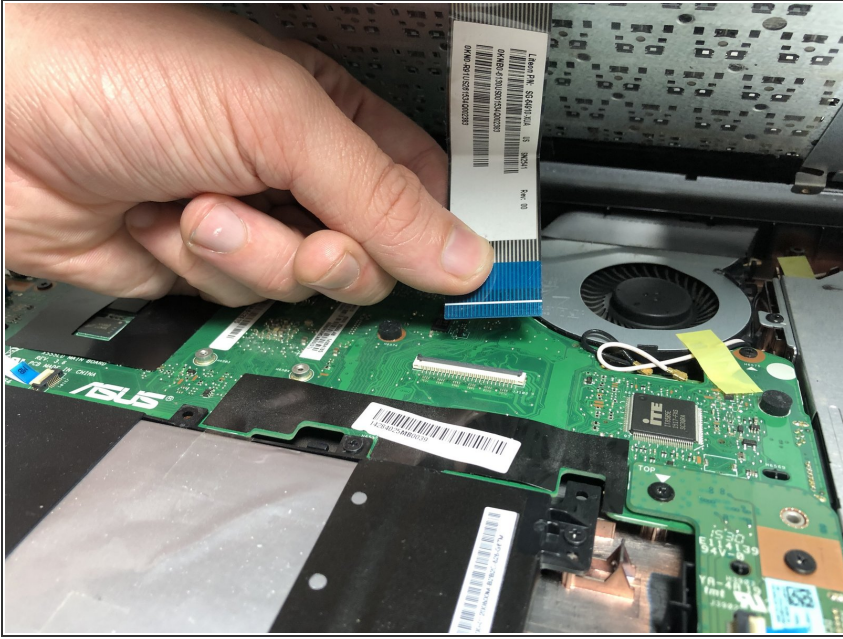


- Flip the laptop over and flip the screen up.
- Pry upward on the edges of the faceplate in order to separate the keyboard and trackpad from the rest of the device.

⚠ Be cautious of the cables connecting the keyboard and trackpad to the motherboard.

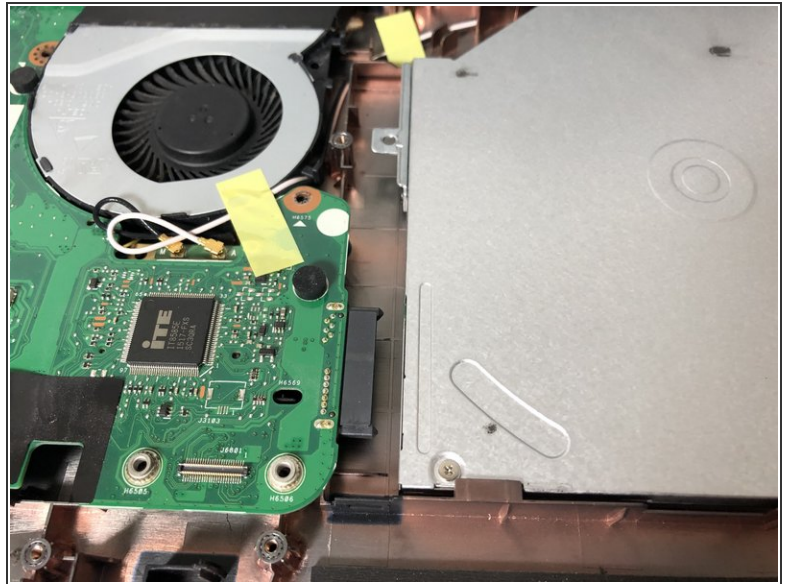
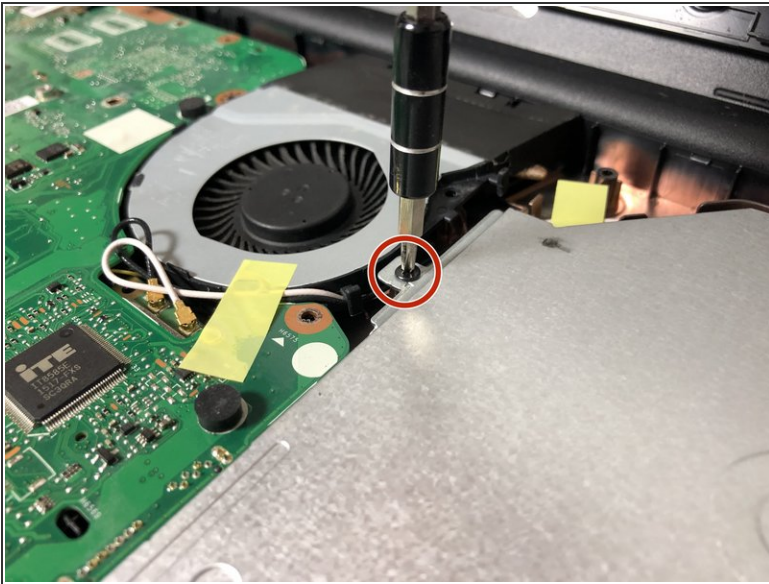
This document was generated on 2022-12-18 04:27:12 PM (MST).

Step 3



- Disconnect the keyboard flex cable from its motherboard ZIF socket.
- ⓘ To unlock a [ZIF connector](#), use the tip of a spudger or your fingernail to flip up the small, hinged locking flap. Carefully slide the unlocked cable out of the socket.

Step 4



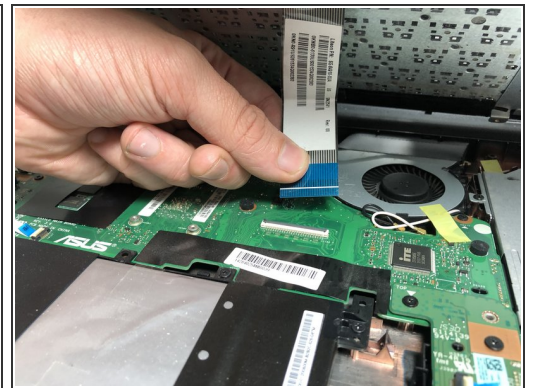
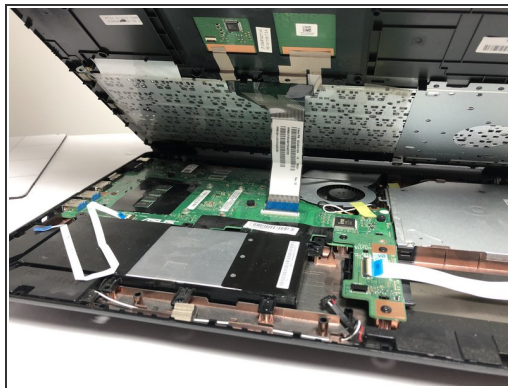
- Use the Phillips #0 screwdriver to unscrew the one Phillips #0 screw that connects the CD drive to the motherboard.
- Slowly slide out the CD drive, keeping it level, to remove it.

Step 5 — Hard Drive



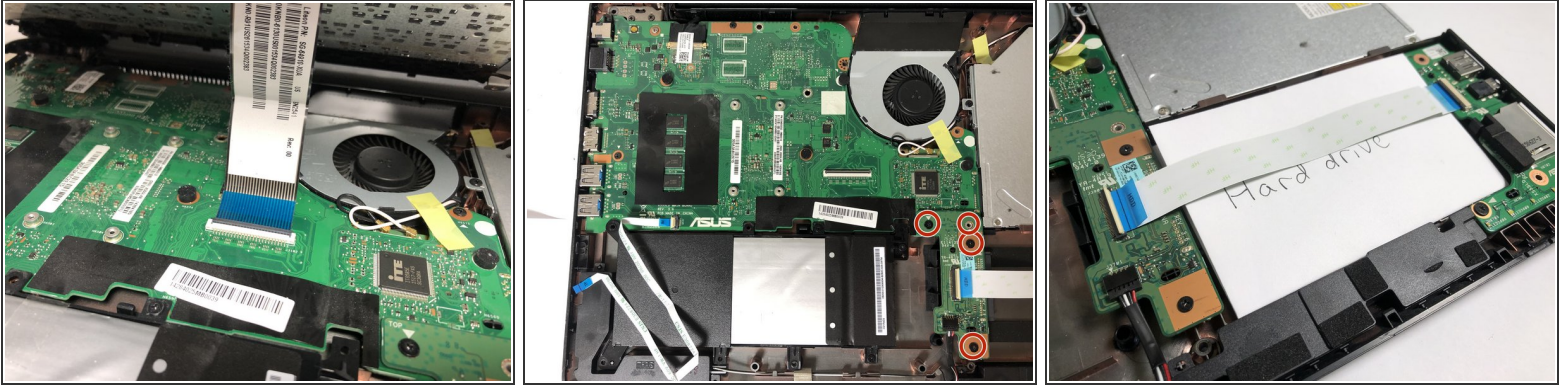
- Remove ten 18mm Phillips #0 screws from the backside of the device.
- ❗ Removal of the RAM access panel is not necessary.

Step 6



- Carefully fold the device open.
 - Begin to pry upward on the edges of the faceplate in order to separate the keyboard and trackpad from the rest of the device.
- ⚠ Be cautious of the cables connecting the keyboard and trackpad to the motherboard.
- To remove the ZIF connector, gently lift upward on the blue tab to disconnect it from the motherboard.

Step 7



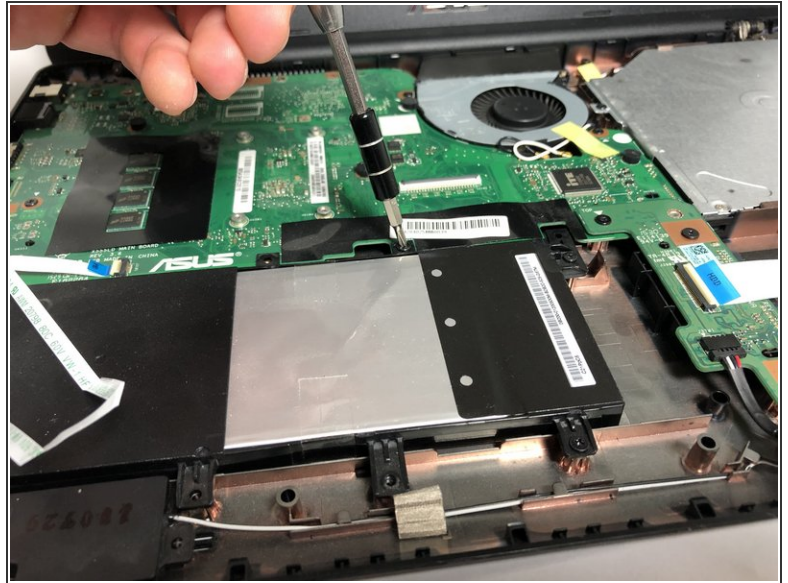
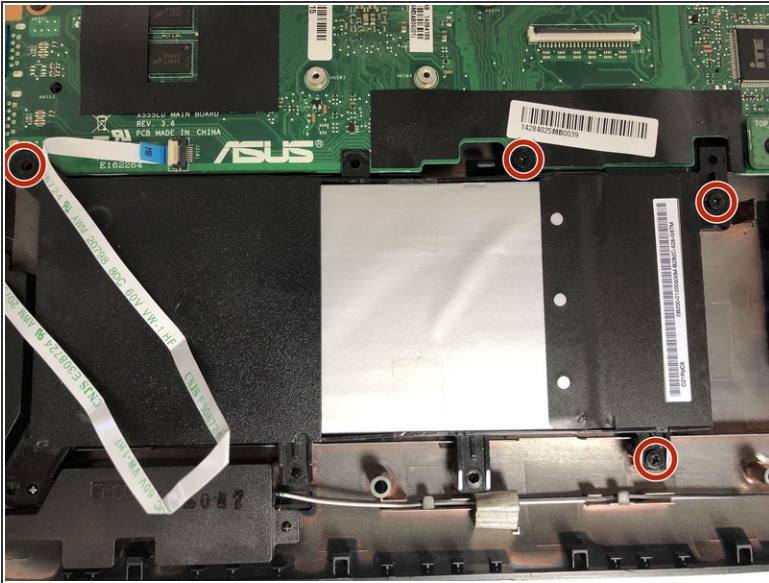
- Fold the keyboard section of the laptop up towards the screen to fully expose the inside of the device.
- Unscrew the four 4mm Phillips #0 screws holding down the hard drive.

Step 8



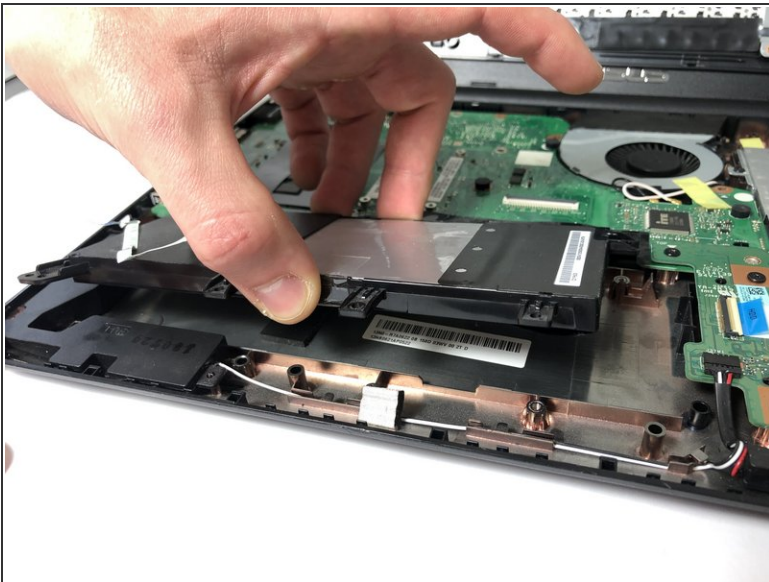
- Disconnect the ZIF connector and lift the hard drive out of the space.

Step 9 — Battery



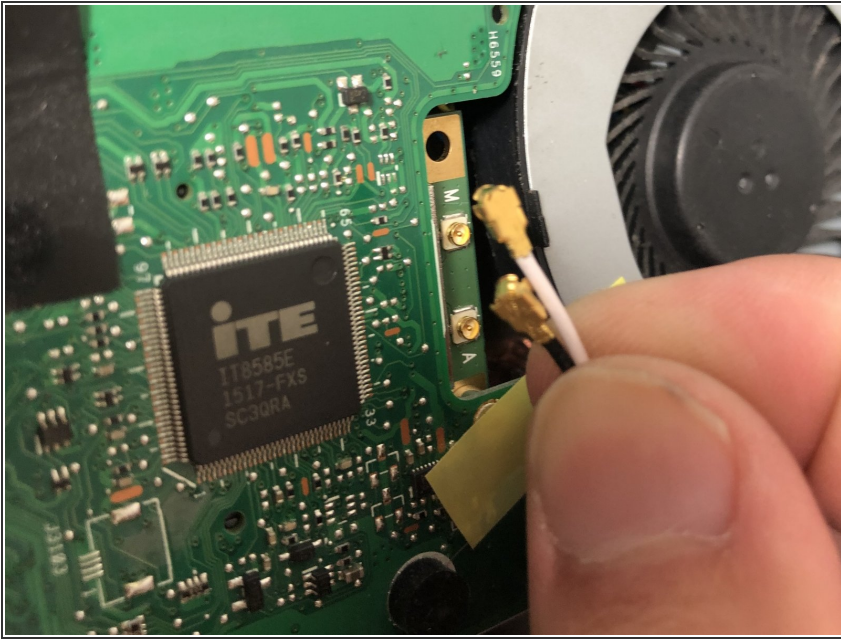
- Remove the four 4 mm Phillips #0 screws securing the battery.

Step 10



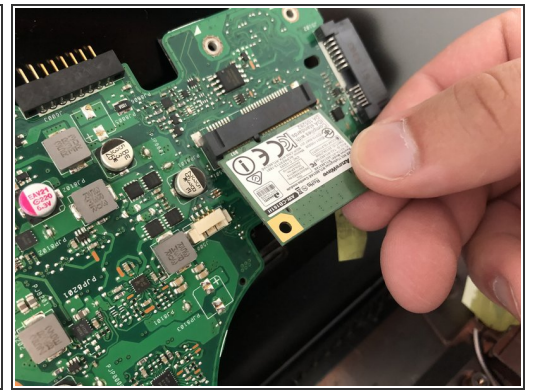
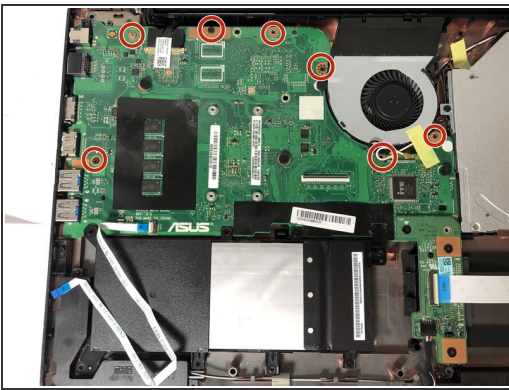
- Lift up battery and remove it from the device.

Step 11 — Network Card



- Disconnect the two wires connected to the network card.

Step 12



- Remove the seven Phillips #0 screws holding the motherboard down.
- Lift the motherboard upwards, folding it towards the laptop chassis.
- Unscrew the Phillips #0 screw holding down the network card, and slide it out.

To reassemble your device, follow these instructions in reverse order.