



LG K30 Rear Facing Camera Replacement

This guide explains the processes necessary to replace the Rear Facing Camera for the LG K30 cell phone.

Written By: Vivek Kathrotiya



INTRODUCTION

Have you received a “Warning: Camera Failed” message or something similar? Is your camera lens on your LG K30 Phone cracked. These are signs that your LG Phone is in need a camera replacement.

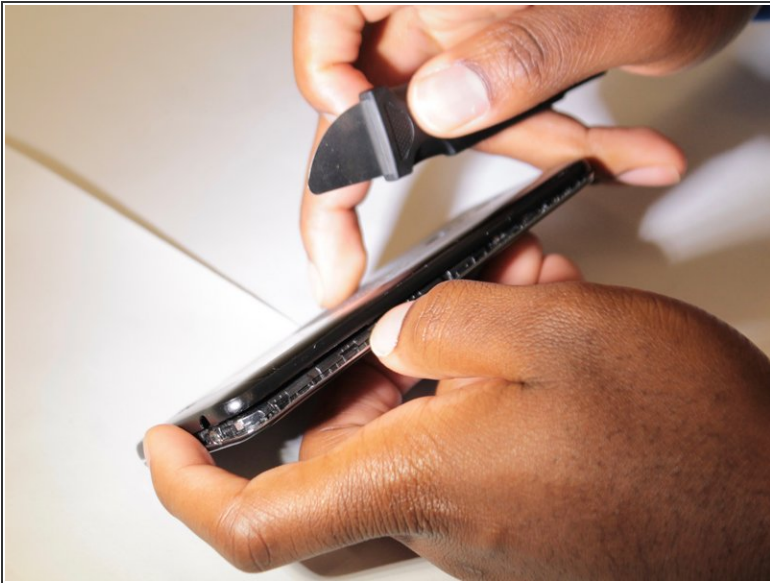
Use this guide to install a new rear facing camera. As always, please ensure your phone is powered off completely.



TOOLS:

- [Jimmy](#) (1)
 - [Metal Spudger](#) (1)
 - [Phillips #00 Screwdriver](#) (1)
-

Step 1 — Battery



⚠ Before disassembling your LG K30, discharge the battery below 25%. A charged lithium-ion battery can catch fire and/or explode if accidentally punctured.

- Power off your Phone before beginning disassembly.
- Use the 'Jimmy' and 'Metal Spudger' to slowly pry open the outsides of the back case.

Step 2



- Remove the thirteen 3.4 mm Phillips #00 screws securing the midframe to the display assembly.

Step 3



- Use a metal spudger or plastic opening tool to pry open the outer cover.

Step 4



- Use the flat end of a spudger to detach the battery connector from the logic board.

Step 5



- Use a spudger to pry the battery from the phone.
- ⓘ There may be an adhesive on the back of the battery and the phone. Pry the battery gently to prevent puncture or damage.
- ⚠ Do not bend or puncture the battery.

Step 6 — Motherboard



- Use a spudger to carefully disconnect the front camera connector.
- Use a spudger to disconnect the display cable connector.

Step 7



- Remove the motherboard assembly from the display assembly with the a spudger or hand.

Step 8 — Rear Facing Camera



⚠ Only pry on the tab, not the connector itself.

- Use a Spudger to flip the release tab on the rear-facing camera cable ZIF connector.
- Remove the rear-facing camera.

To reassemble your device, follow these instructions in reverse order.