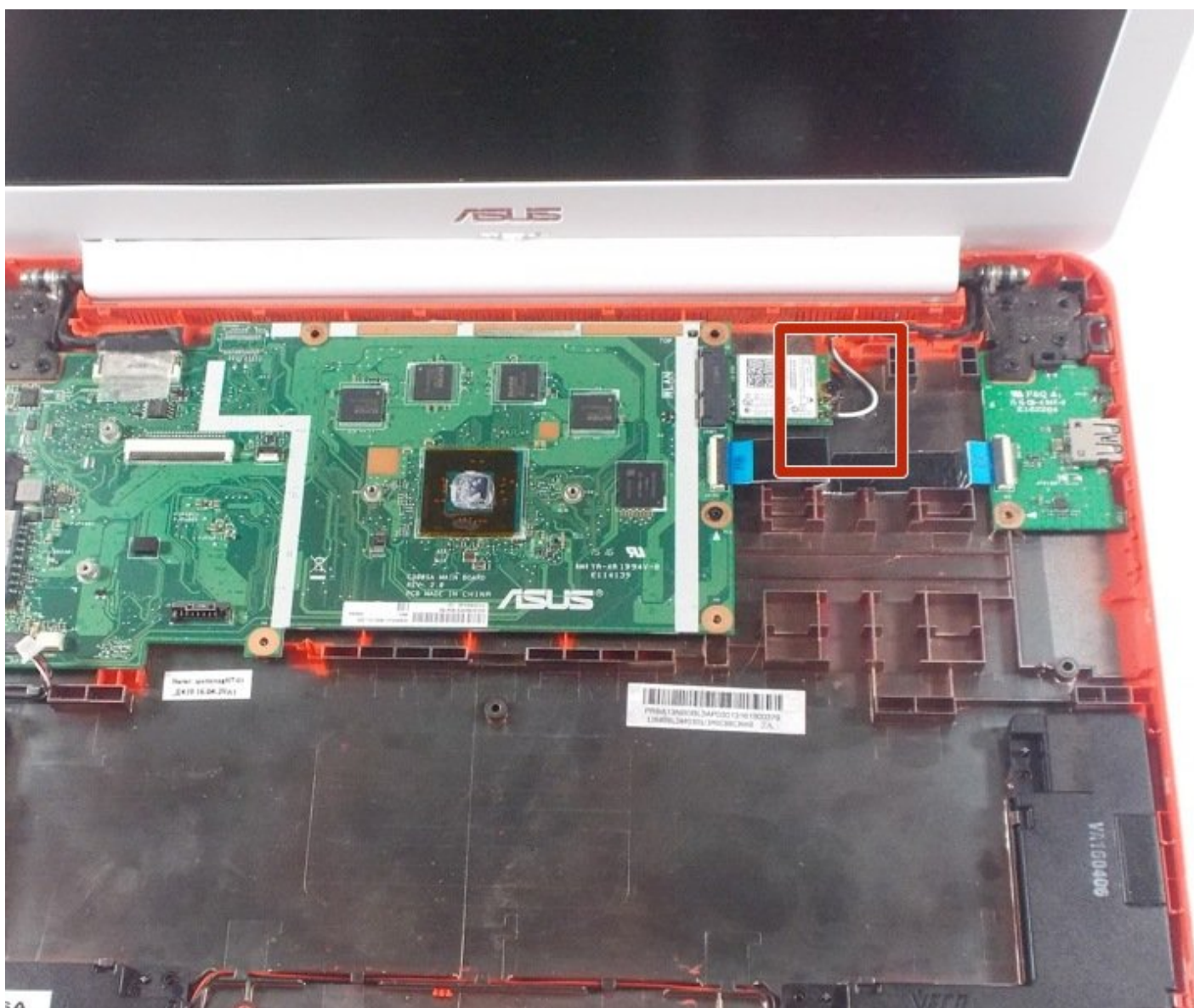




Asus Chromebook C300SA-DS02 Display Assembly Replacement

This guide will show you how to replace the display assembly of an Asus Chromebook C300SA-DS02.

Written By: Celina Monteiro



This document was generated on 2020-11-23 07:08:48 PM (MST).

INTRODUCTION

This guide will walk you through the step by step process of removing the display assembly from the laptop. To replace just the LED screen component within rather than the entire assembly, refer to [Asus Chromebook C300SA-DS02 Screen Replacement](#).




TOOLS:

- [iFixit Opening Tools](#) (1)
 - [Phillips #0 Screwdriver](#) (1)
 - [Spudger](#) (1)
-

Step 1 — Keyboard



 Power the laptop off and make sure the charger is unplugged before starting.

- Remove the eight 8.0mm Phillips #0 screws on the bottom of the laptop.
- Remove the three 6.0mm Phillips #0 screws.

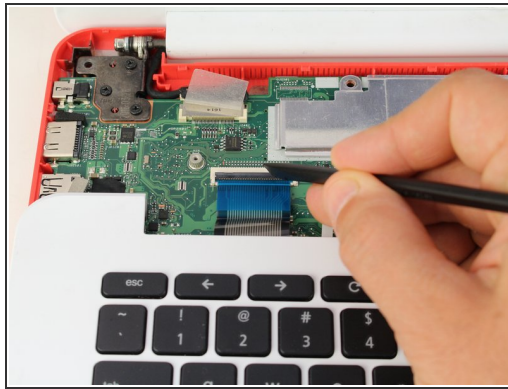
Step 2



- Open the laptop.
- Using an iFixit opening tool, pry along the edges of the keyboard.
- Lift the keyboard and slide it gently towards you.

⚠ Do not completely remove the keyboard. It is still connected to the back panel by a pair of ribbon cables.

Step 3



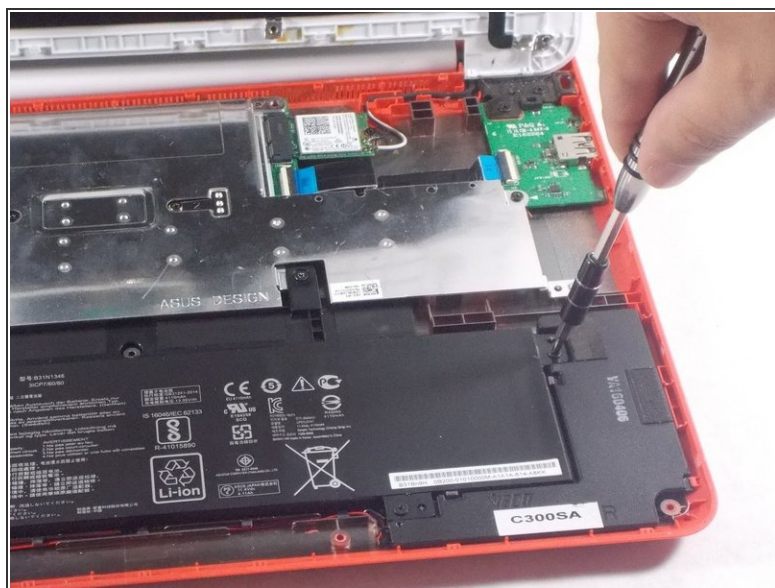
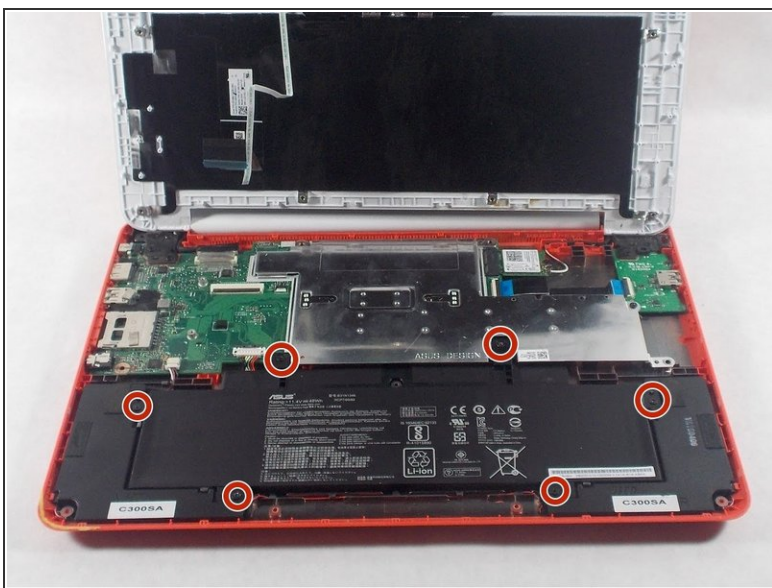
- Disconnect the two ZIF connectors by prying up the locking bar with a spudger and removing the ribbon cable.

Step 4



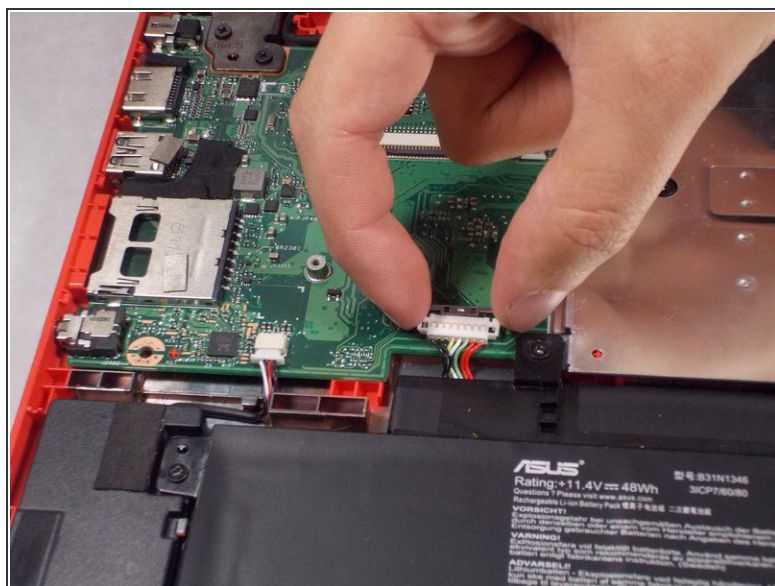
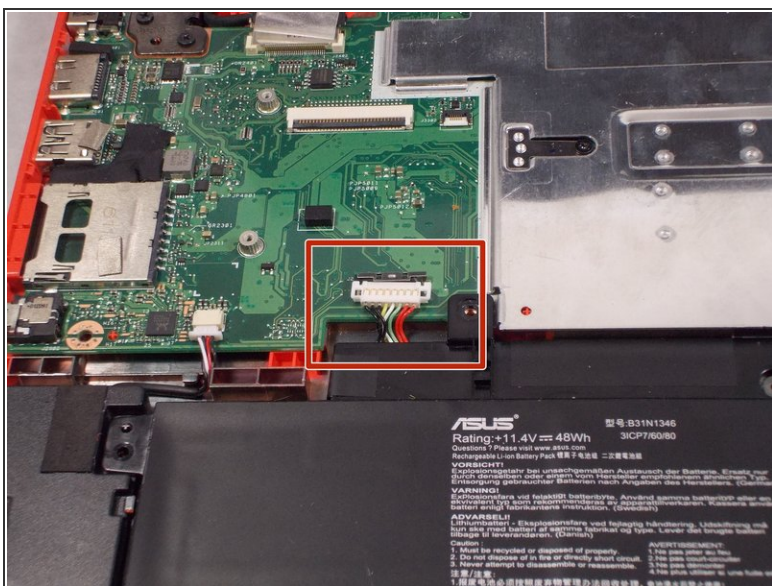
- Remove the keyboard from the laptop.

Step 5 — Battery



- Remove the six 5.6mm Phillips #0 screws around the battery.

Step 6



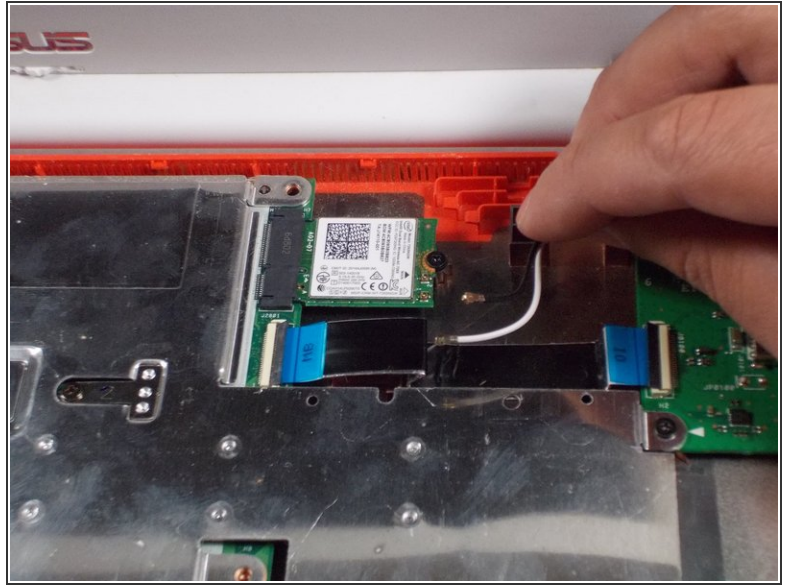
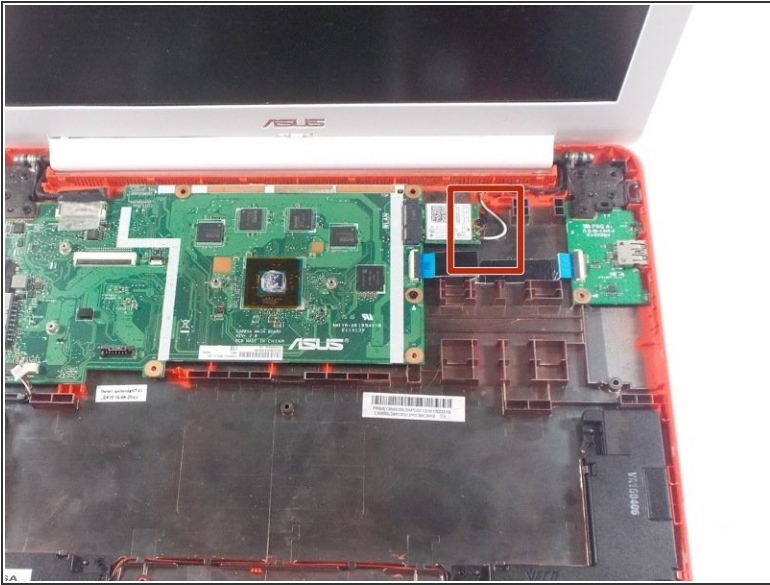
- Using your thumb and index finger, pinch the multi-color cable and disconnect it from the motherboard.

Step 7



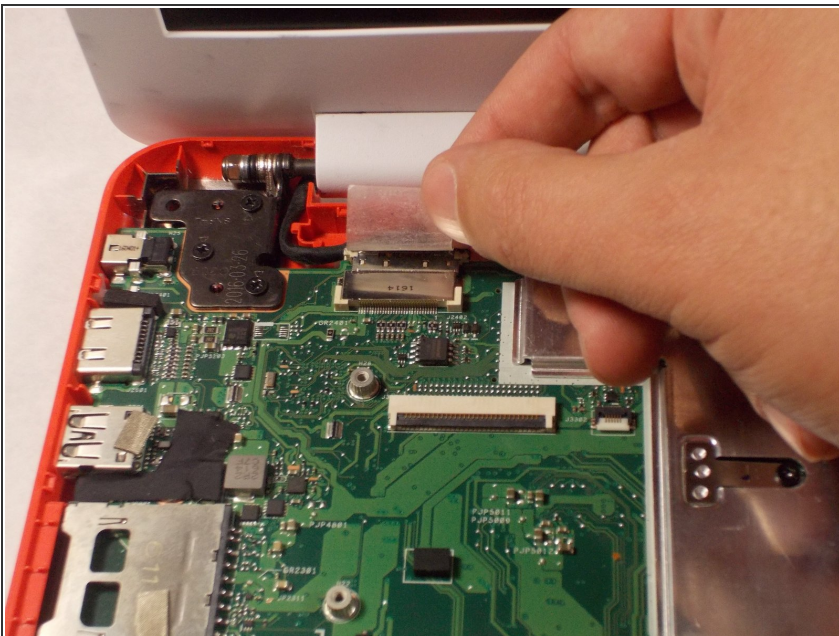
- Lift the battery out of the laptop.

Step 8 — Display Assembly



- Unplug the black and white cable from the motherboard.
- ⓘ These two wires connect to the antenna within the display assembly. The white cable is longer and connects to the bottom import.

Step 9



- Peel back the tape covering the display cable.
- Ease the cable towards the screen and out from the connector.

Step 10



- Use a Phillips #0 driver to remove the six 5mm screws on the top right and left display hinges.

Step 11



- Gently lift the display assembly up and away from the laptop.

To reassemble your device, follow these instructions in reverse order.