



HP Pavilion g7-2023cl Optical Drive Replacement

This guide will show you how to replace the HP Pavilion g7-2023cl Optical Drive.

Written By: Thomas Maloney



INTRODUCTION

There are a few reasons you may want to replace your optical drive. You lost the bezel (drive face), the optical drive doesn't open, the optical drive no longer works, or you want to upgrade to a blue ray drive. Whatever the reason, this guide will show you how to replace the optical drive.

The parts listed in the guide include the compatible DVD and Blue-ray optical drives. The instructions in this guide work for replacing either optical drive in the device. You must decide which drive you want to replace in this optical drive location.



TOOLS:

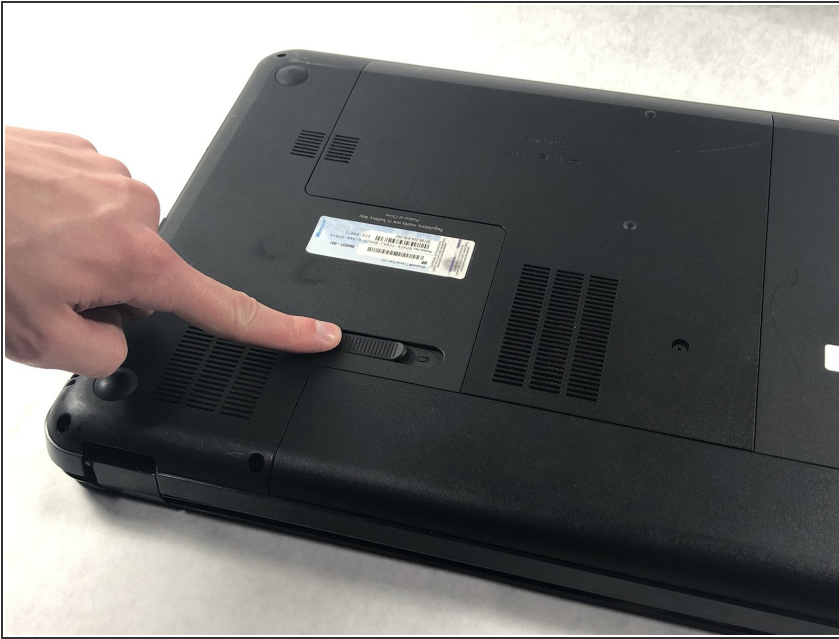
- [Phillips #0 Screwdriver](#) (1)
- [Spudger](#) (1)
- [iFixit Opening Tools](#) (1)
- [Anti-Static Wrist Strap](#) (1)



PARTS:

- [HP Pavilion g7-2023cl DVD Optical Drive With Bezel And Hardware Mount](#) (1)
- [HP Pavilion g7-2023cl Blue-ray Optical Drive With Bezel And Mount](#) (1)

Step 1 — Battery



- ⚠ Shut off your device and disconnect the power cord. Disconnect any external devices connected to the device.
- Place your finger on the battery lock slider, press toward the center of the laptop to unlock the battery.
- ⓘ The lock will make a click sound letting you know that the battery is unlocked.

Step 2



- Use your thumb to pry up the edge of the battery and lift it out of the device.
- ★ When replacing the battery, align the notch on the battery with the battery lock on the device. Gently press down on the battery until you hear the lock click, which signals that the battery is secure.

Step 3 — Service Door



- Using a Phillips #0 screwdriver, loosen the service door screw.
- ⓘ This is a captive screw that will remain attached to the service door.

Step 4



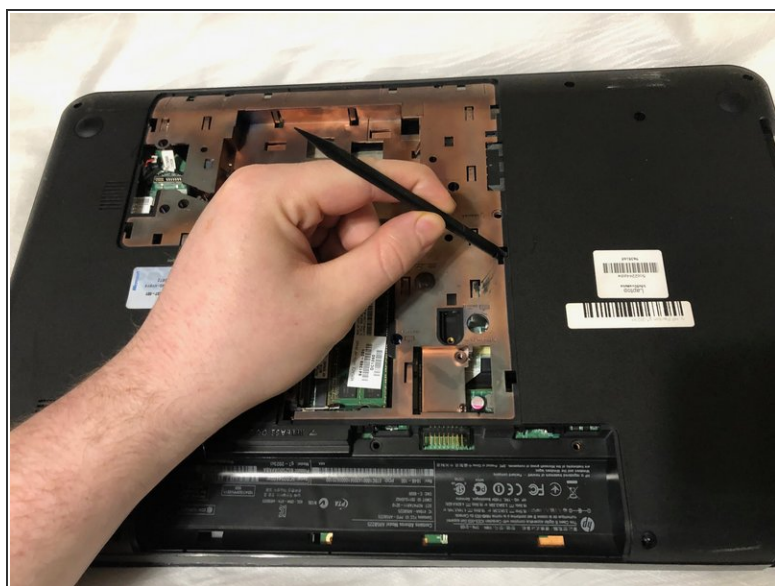
- Lift the service door up and away from the device.

Step 5 — Optical Drive



- Using a Phillips #0 screwdriver, remove the optical drive anchor screw.

Step 6



- Insert the flat end of a spudger into the optical drive release access hole.

Step 7



- Orient the device so that you can remove the optical drive.
 - ❗ If you are missing the bezel (face of the optical drive) or have the bezel these same steps work to remove the optical drive.
- Using a spudger, slide out the optical drive enough so that you can grab it with your hand.

Step 8



- Remove the optical drive by pulling it out of the device.
- ☑ When replacing the optical drive, slide it completely back into the slot so that it fits flush.

To reassemble your device, follow these instructions in reverse order.