



Motorola Moto E4 Plus (XT1771) Fingerprint Sensor Replacement

Use this guide to remove the fingerprint sensor...

Written By: Dominik Schnabelrauch



INTRODUCTION

Use this guide to remove the fingerprint sensor in the Motorola Moto E4 Plus (XT1771).

Before you begin, download the [Rescue and Smart Assistant](#) app to backup your device and diagnose whether your problem is software or hardware related.

Before disassembling your phone, discharge the battery below 25%. The battery can catch fire and/or explode if accidentally punctured, but the chances of that happening are much lower if discharged.

In order to replace the fingerprint sensor you'll need to remove the display first.

You'll need replacement adhesive to reattach components during reassembly.



TOOLS:

[Spudger](#) (1)
[iFixit Opening Picks \(Set of 6\)](#) (1)
[Phillips #00 Screwdriver](#) (1)
[Tweezers](#) (1)
[iOpener](#) (1)
[Tweezers](#) (1)



PARTS:

[Moto E4 Plus Display Adhesive - Genuine](#)
(1)

Step 1 — Remove the back cover



i Power off your phone before beginning disassembly.

- Insert the edge of the spudger into the notch on the bottom right corner of the phone.
- Twist the spudger to start releasing the back cover from the phone.
- Slide the spudger along the bottom edge to separate the back cover from the phone.

Step 2



- Lift the phone unit out of the back cover.

Step 3 — Midframe



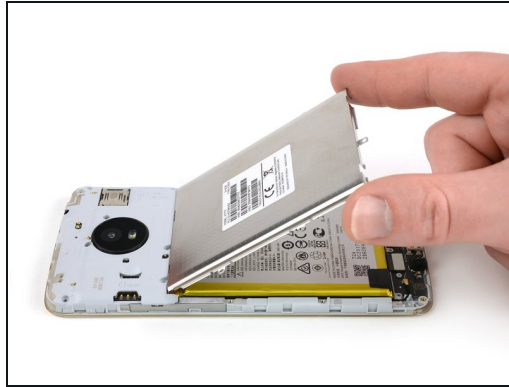
- Remove the eighteen 3.3 mm Phillips screws securing the midframe assembly.

Step 4



- Remove the charging board cover.

Step 5



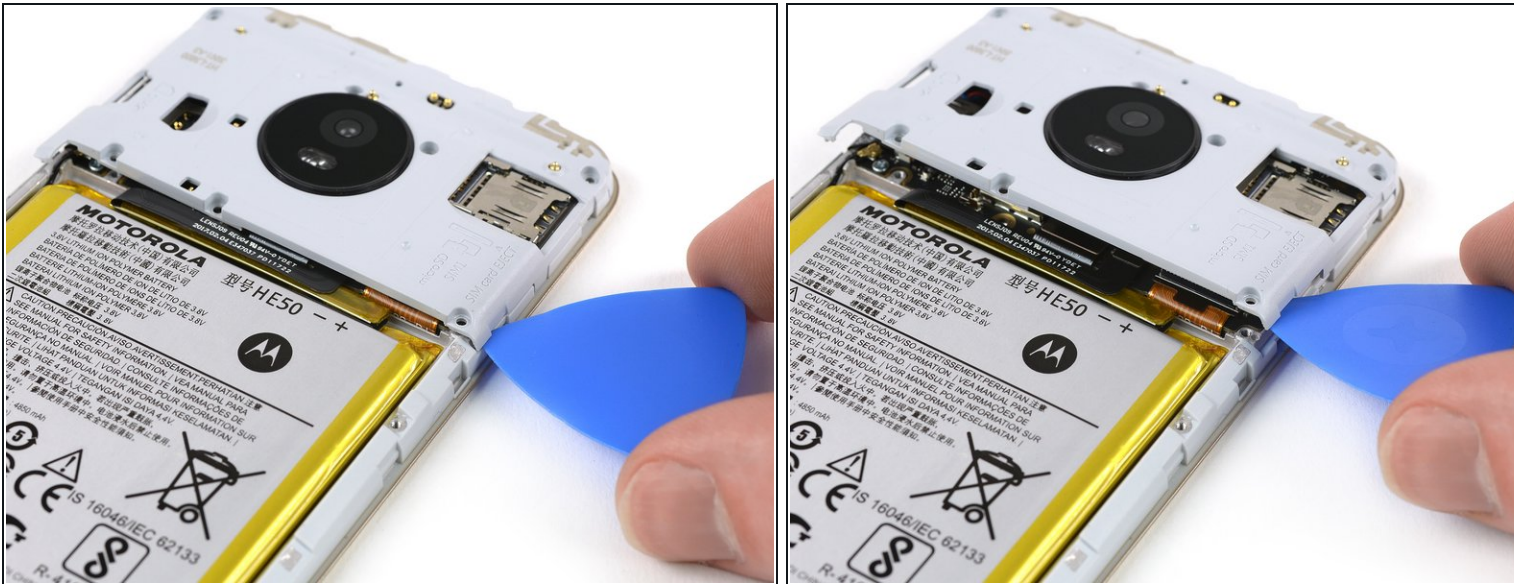
- Remove the battery cover.

Step 6



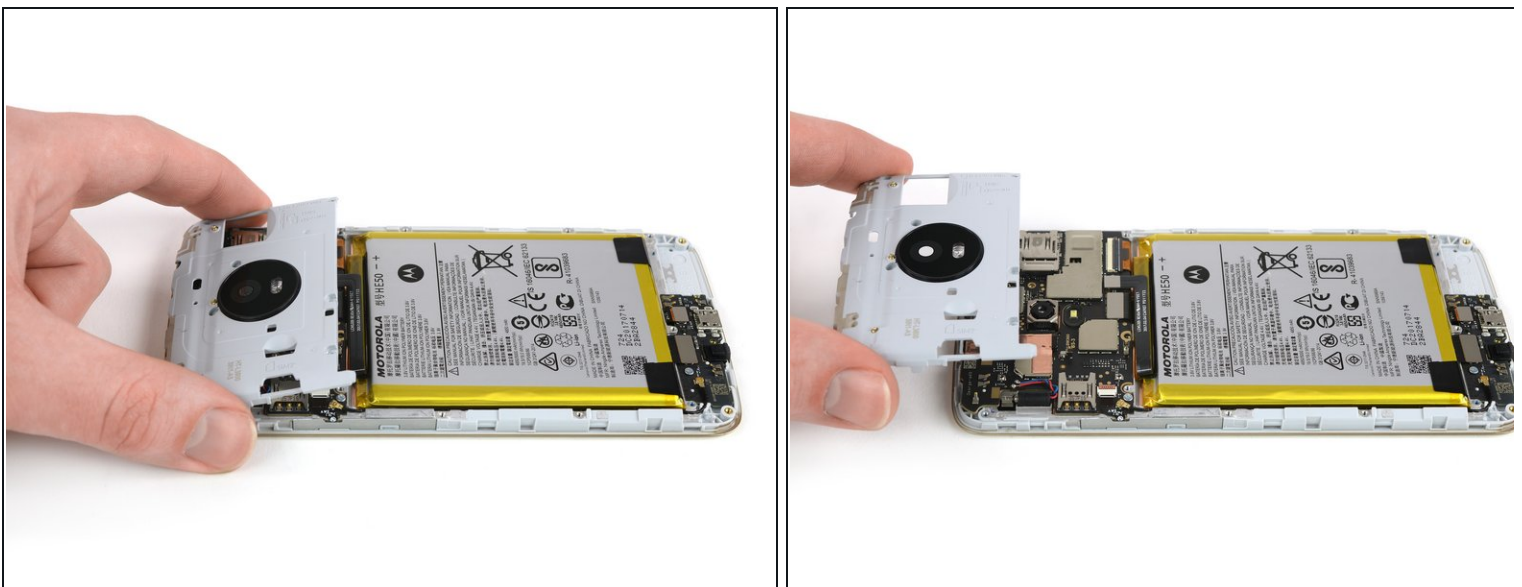
- Insert an opening pick underneath the bottom left corner of the motherboard cover.
- Slide the opening pick between the cover and the second SIM tray to release the plastic clip.

Step 7



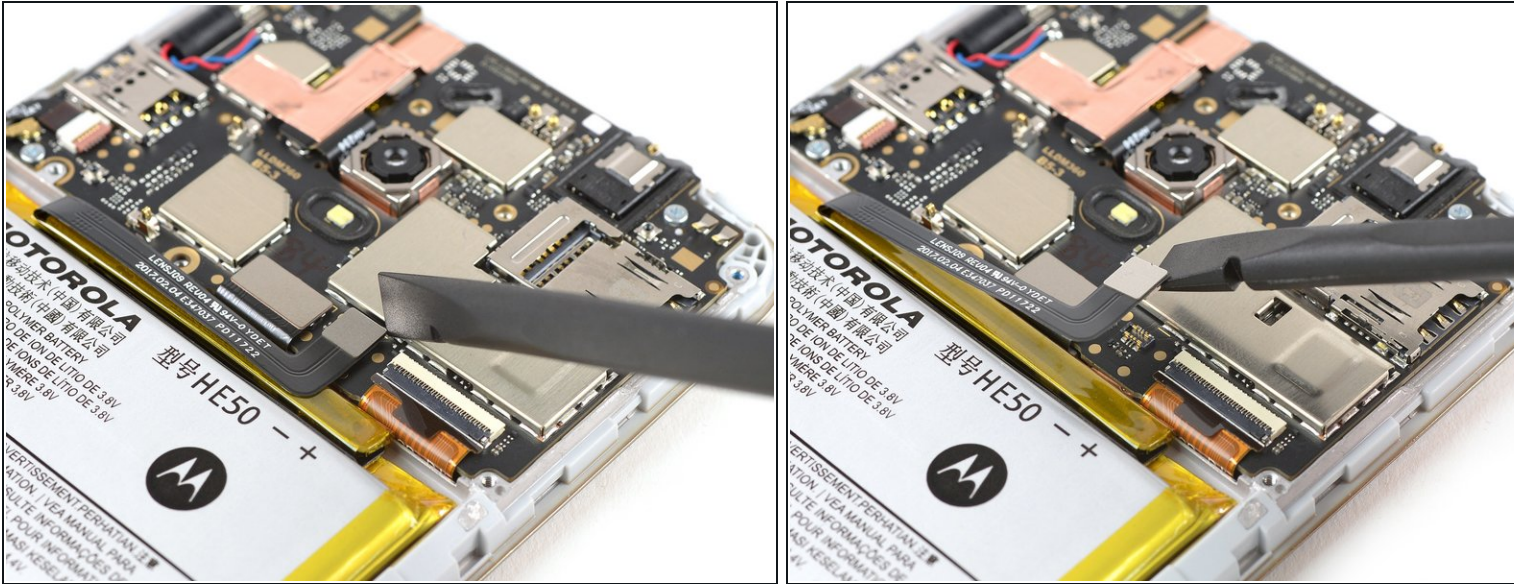
- Insert an opening pick underneath the bottom right corner of the motherboard cover.
- Use the opening pick to pry up the motherboard cover.

Step 8



- Remove the motherboard cover.

Step 9 — Battery Disconnect



- Use the edge of a spudger to pry up and disconnect the battery flex cable from the motherboard.

Step 10 — Motherboard Assembly



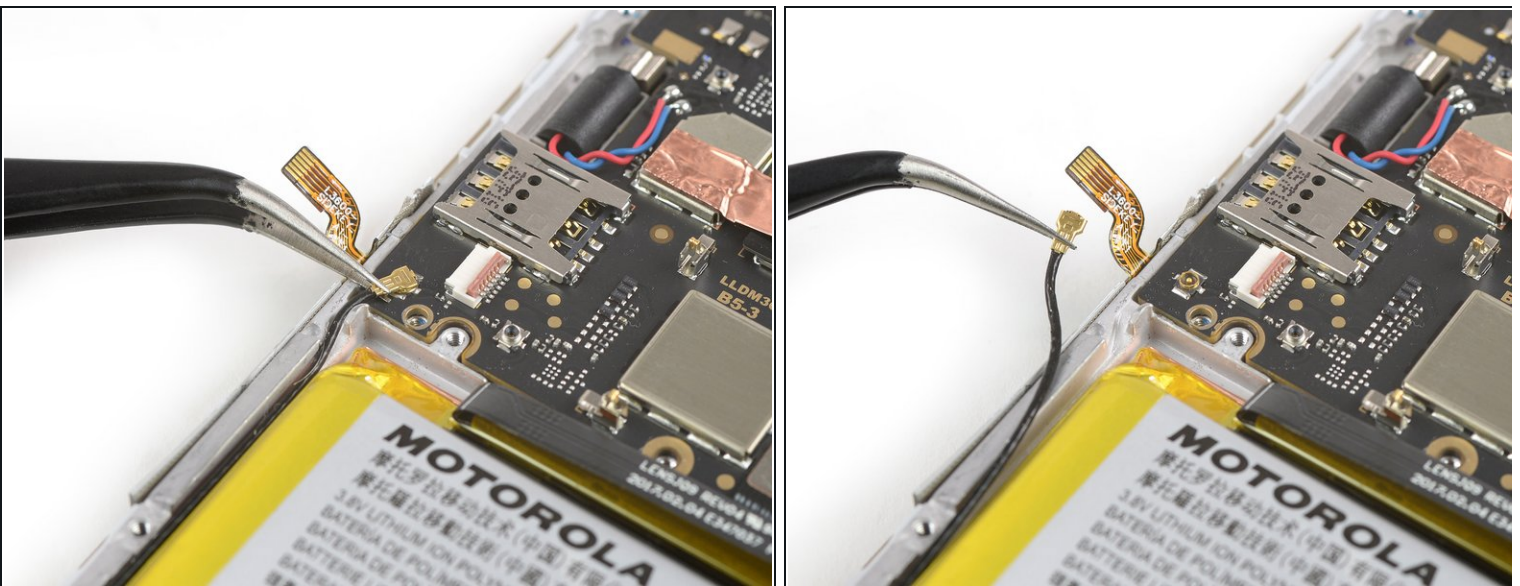
- Remove the two 2.9 mm Phillips screws.

Step 11



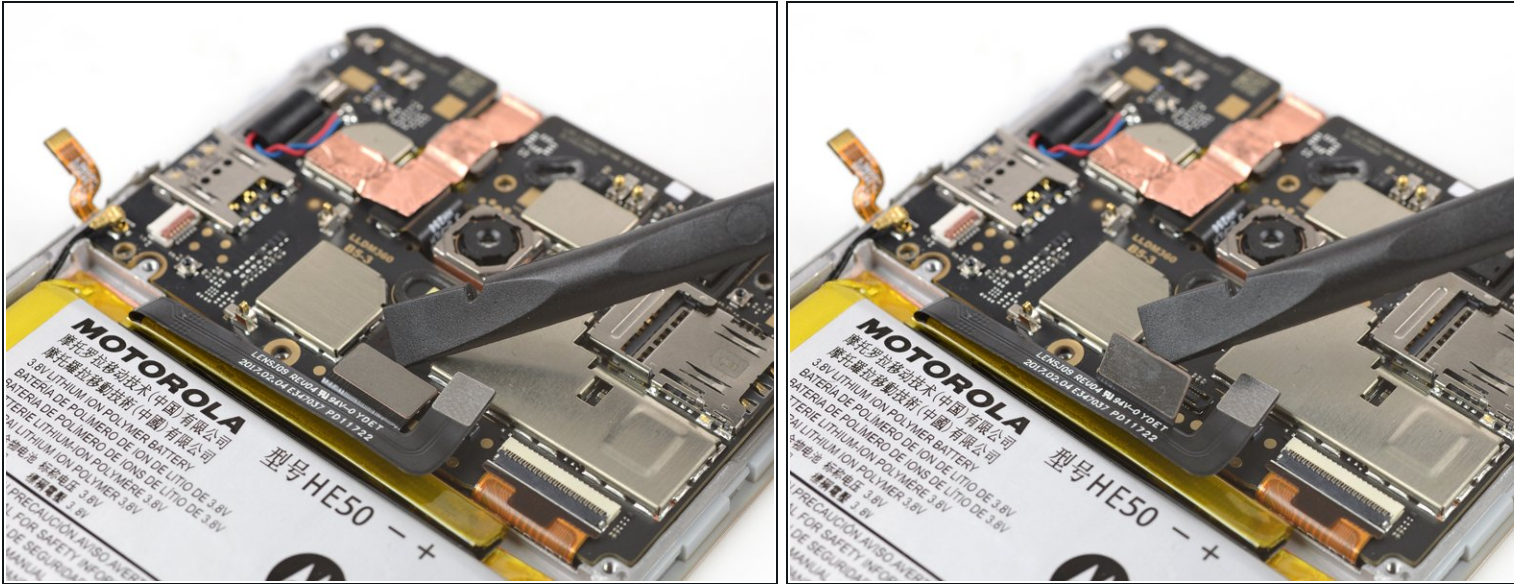
- Use the edge of a spudger to pry up the flap of the ZIF connector located below the SIM slot on the left side of the motherboard.
- Use a pair of tweezers to pull the power and volume button flex cable out of the ZIF connector.
- ☑ To reattach [ZIF connectors](#) like this one, carefully insert the flex cable into the ZIF connector up to the marked line on the cable, and then close the locking flap.

Step 12



- Use a pair of tweezers to pry up and disconnect the antenna cable.

Step 13



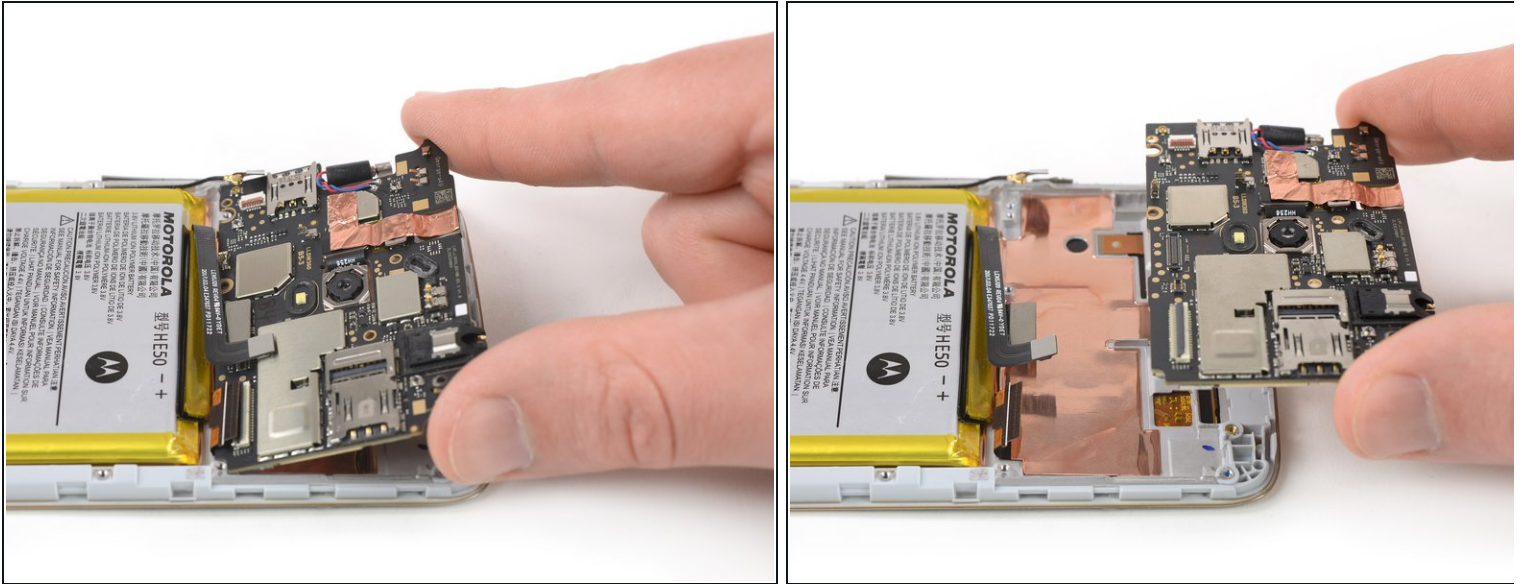
- Use the flat end of a spudger to pry up and disconnect the interconnect flex cable.

Step 14



- Use the tip of a spudger or an opening pick to pry up the flap of the ZIF connector, located in the bottom right corner of the motherboard.
- Use a pair of tweezers to pull the display flex cable out of the ZIF connector.

Step 15



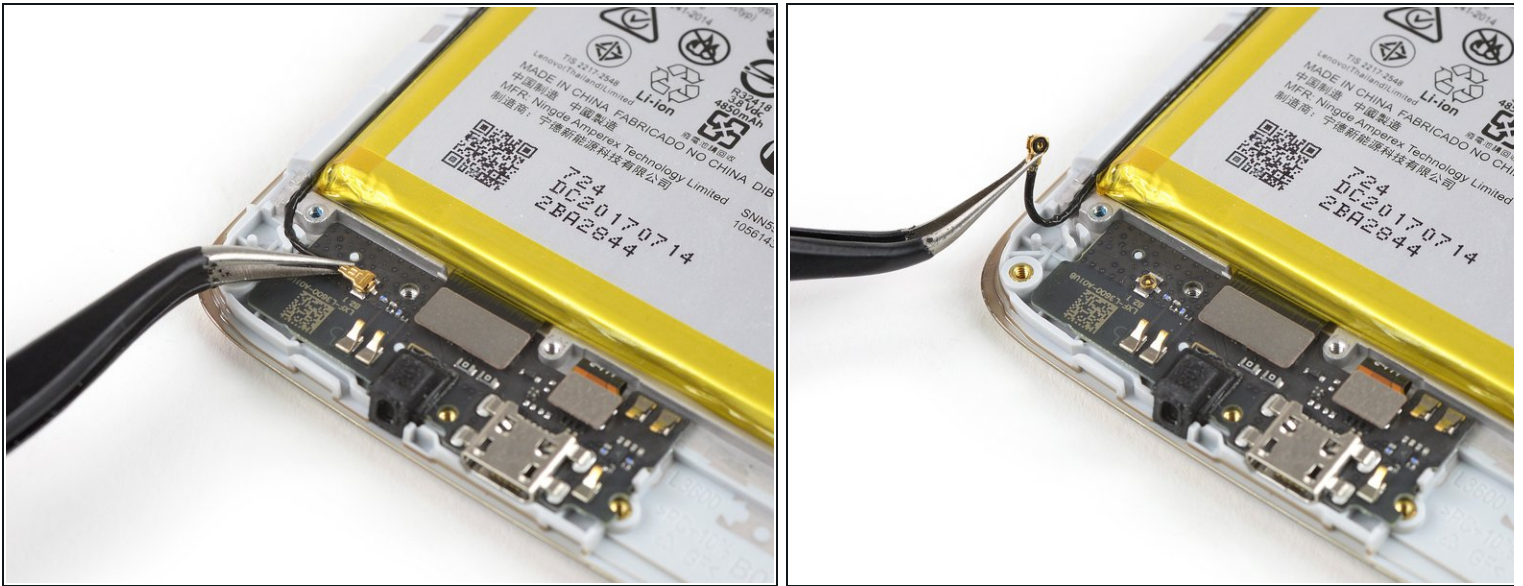
- Grasp the motherboard by the top corners and remove it by lifting up and pulling it carefully out of its recess.

Step 16 — Charging Board



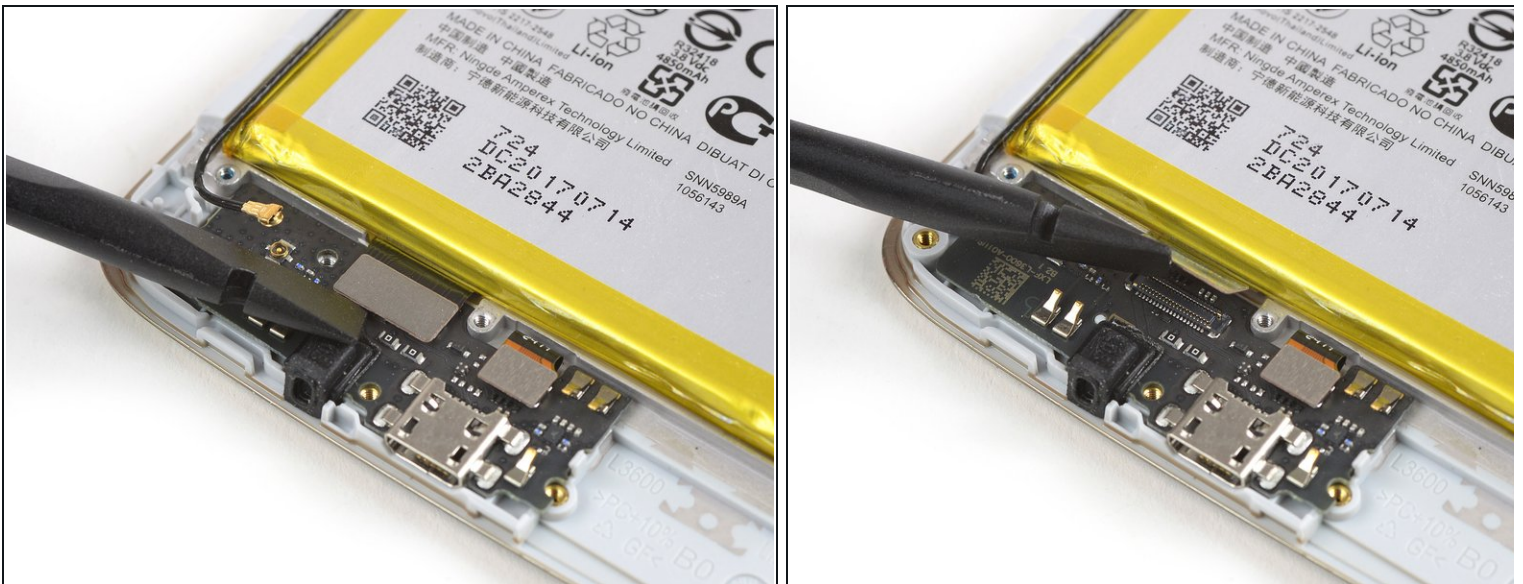
- Remove the single 2.9 mm Phillips screw holding the charging board to the frame.

Step 17



- Use a pair of tweezers to pry up and disconnect the antenna cable.

Step 18



- Use the edge of a spudger to pry up and disconnect the interconnect flex cable.

Step 19



- Use the edge of a spudger to pry up and disconnect the fingerprint sensor flex cable.

Step 20



- Insert the tip of a spudger underneath the bottom edge of the charging board and pry upwards.
 - Remove the charging board.
- i** Before reassembly check your new part for any components that might need to be transferred from the old one (e.g. microphone rubber gasket).

Step 21 — Display



- Use a pair of tweezers to peel the copper tape from the right edge until the display flex cable underneath is fully exposed.

Step 22



- Use a pair of tweezers to carefully peel the display flex cable off of the midframe.

Step 23



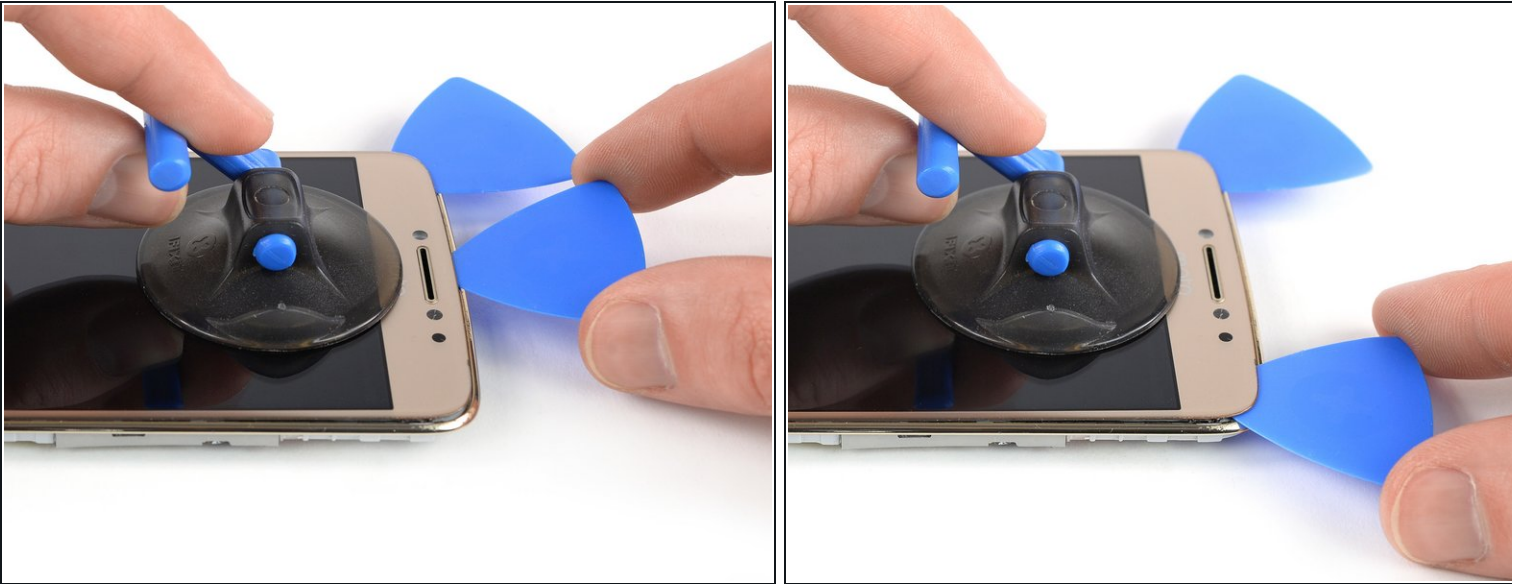
- [Prepare an iOpener](#) and apply it to the display for at least two minutes to loosen the adhesive underneath.

Step 24



- Once the screen is warm to the touch, apply a suction cup near the top edge of the phone right under the earpiece speaker.
- ⓘ If the phone's screen is cracked, the suction cup may not stick. Try [lifting it with strong tape](#), or superglue the suction cup in place and allow it to cure so you can proceed.
- Pull up the suction cup, and insert the tip of an opening pick under the display where the earpiece speaker is located.
- Slide the opening pick to the top left corner of the phone to cut the adhesive.

Step 25



- Insert a second opening pick and slide it to the top right corner of the phone.

Step 26



ⓘ If cutting becomes too difficult, [reheat](#) and reapply the iOpener.

- Slide the opening pick from the top right corner down the right edge of the phone and cut the adhesive with it.
⚠ While cutting, make sure the pick slides under the display panel and not just between the display and the front glass.
- Slide the opening pick around the bottom right corner.

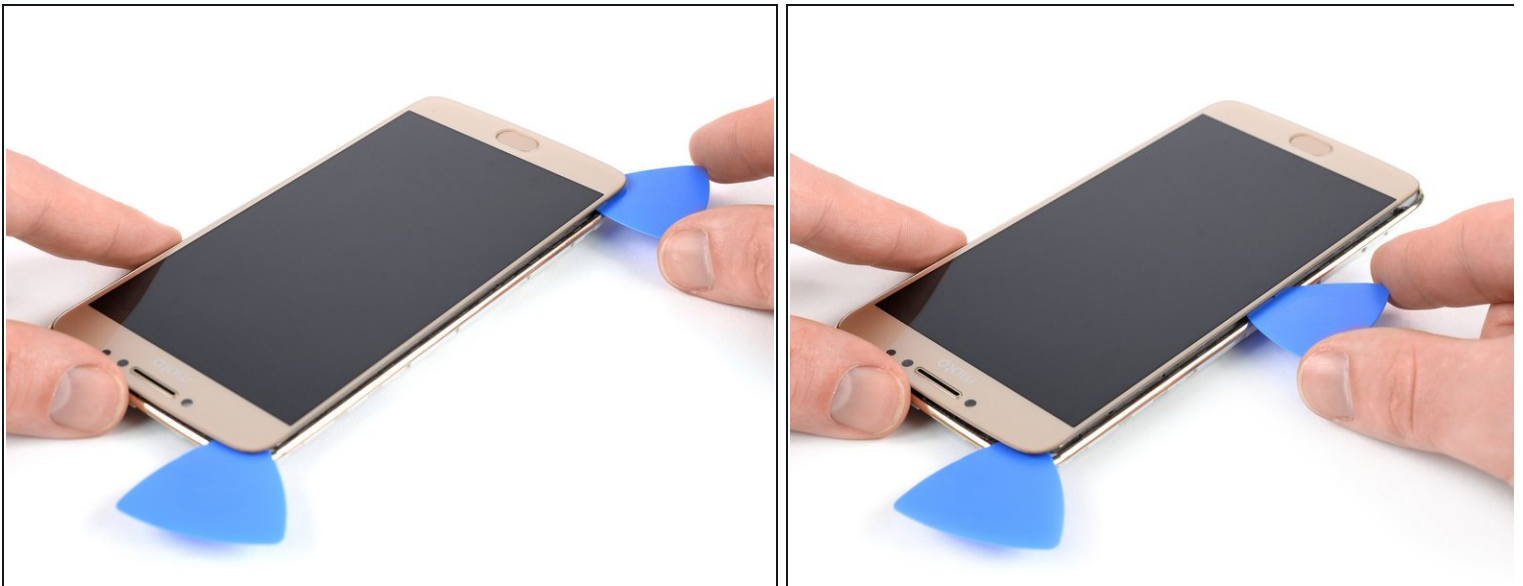
Step 27



- Slide the opening pick along the bottom edge of the phone and cut the adhesive.

⚠ Be careful around the home button, inserting only the tip of the opening pick to prevent damaging the button.

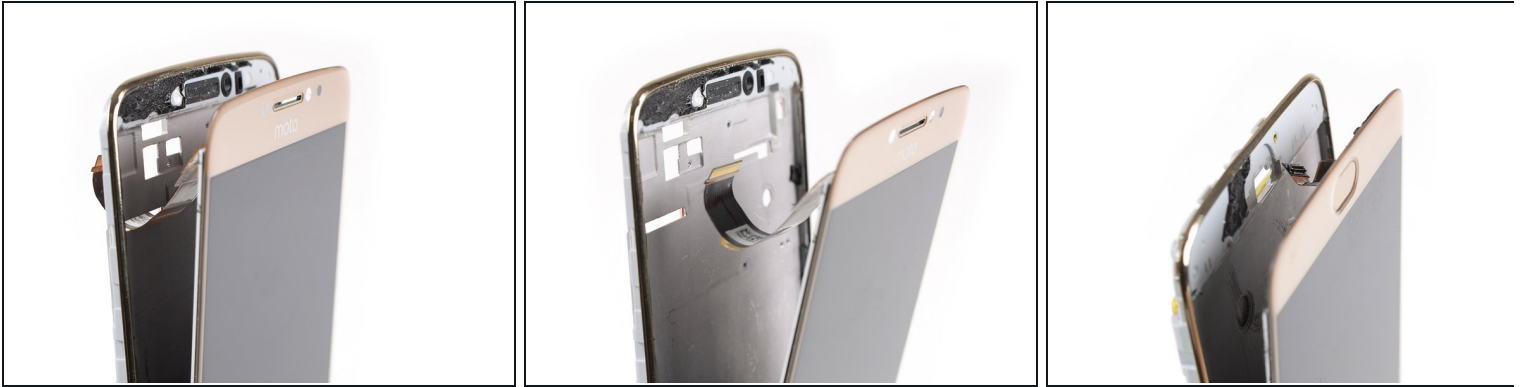
Step 28



- Repeat the previous heating and cutting procedure on the left edge of the phone to cut the remaining adhesive.

⚠ Try not to remove the display all the way yet. The fingerprint and display flex cables are still threaded through the midframe.

Step 29



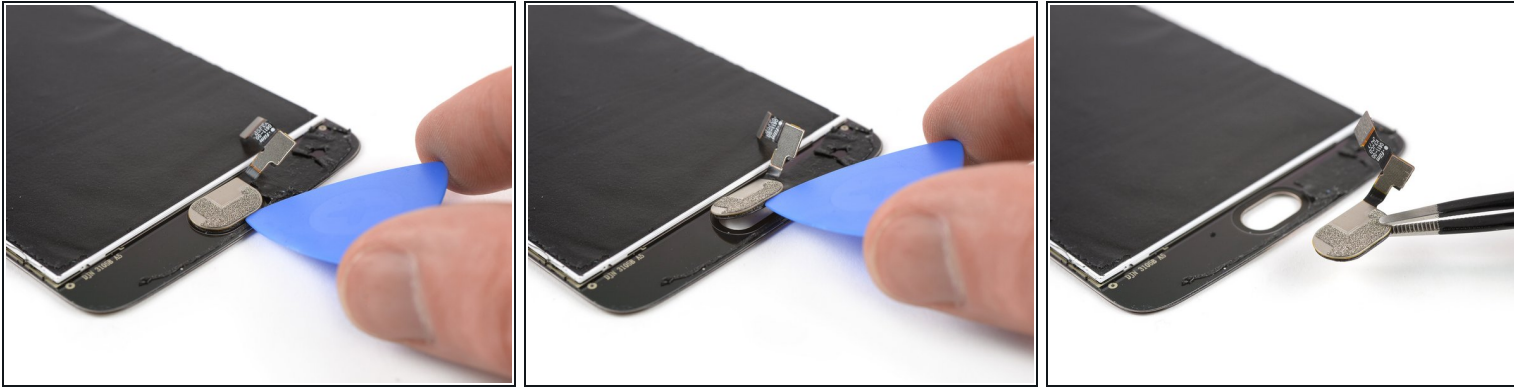
- Carefully thread the display cable at the top and the fingerprint sensor cable on the bottom through their gaps in the midframe.
- Remove the LCD and digitizer.
- ☑ Remove any remaining adhesive from the midframe, and clean the glued areas with isopropyl alcohol and a lint-free cloth.
- ⓘ In case your new LCD and digitizer doesn't include the fingerprint sensor, you will need to continue with the [fingerprint sensor guide](#) to transfer it to the new LCD and digitizer.

Step 30 — Fingerprint Sensor



- [Apply an iOpener](#) to the bottom edge of the screen for about a minute to loosen the adhesive beneath the fingerprint sensor.

Step 31



- Carefully pry off the fingerprint sensor by lifting it with the edge of an opening pick.
 - Remove the fingerprint sensor with a pair of tweezers.
- ☒ There's a small rubber gasket around the fingerprint sensor which you might need to transfer to your replacement sensor.

The best way to secure the new screen is with a sheet of custom-cut double-sided tape. Apply the tape to the back of the screen, then carefully feed the display cable through the frame. Align the screen and press it into place.

To reassemble your device, follow these instructions in reverse order and reapply adhesive where it's necessary.

If possible, turn on your phone and test your repair before installing new adhesive and resealing the phone.

Take your e-waste to an [R2 or e-Stewards certified recycler](#).