



Dell Latitude E6500 RAM Replacement

The Dell Latitude E6500 can experience multiple...

Written By: Anthony Sands



INTRODUCTION

The Dell Latitude E6500 can experience multiple signs of RAM failure, including crashing, a blue background screen, and frequent freezing. However, it is easy to fix with basic tooling. Before beginning the repair, a user must have a size 0 screwdriver and an eight-gigabyte RAM memory card.

NOTE: use an anti-static wrist strap when working to prevent circuitry damage.

TOOLS:

JIS #0 Screwdriver (1)

Step 1 — RAM



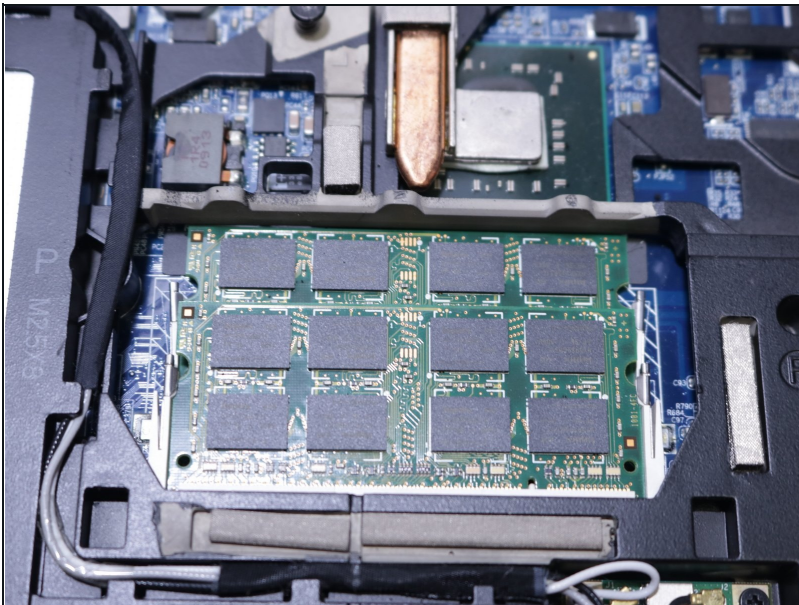
- Turn laptop over with the hinges facing away.

Step 2



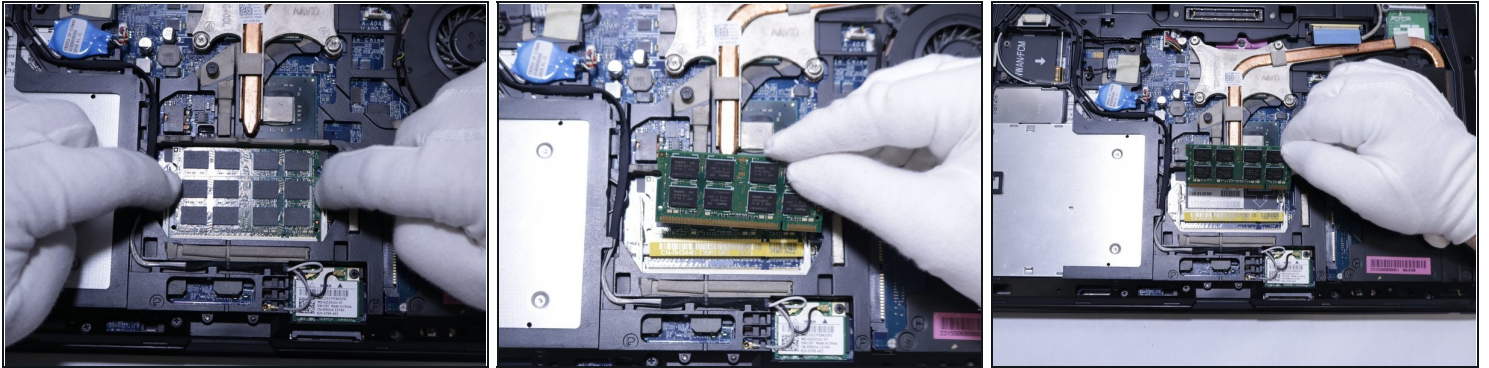
- Use a size 0 screwdriver to remove the center screw.
- Slide the back cover towards you to remove.

Step 3



- Locate the 4 hinges.

Step 4



- Push the first two hinges away from the RAM.
 - Remove first RAM card from the hinge.
 - Push the second two hinges away from the RAM to remove second RAM card.
-

To reassemble your device, follow these instructions in reverse order.