



RIDGID Belt Sander R2740 Power Cord Replacement

This guide will teach you how to replace a power cord on a RIDGID R2740 Belt Sander.

Written By: Cameron Smith



INTRODUCTION

If your RIDGID Belt Sander R2740 doesn't have power the cause could be from a faulty power cord. This guide will teach you how to replace a power cord on a RIDGID Belt Sander R2740 . For this guide, you will need a screwdriver with a T10, T20 and a Phillips #3 head.



TOOLS:

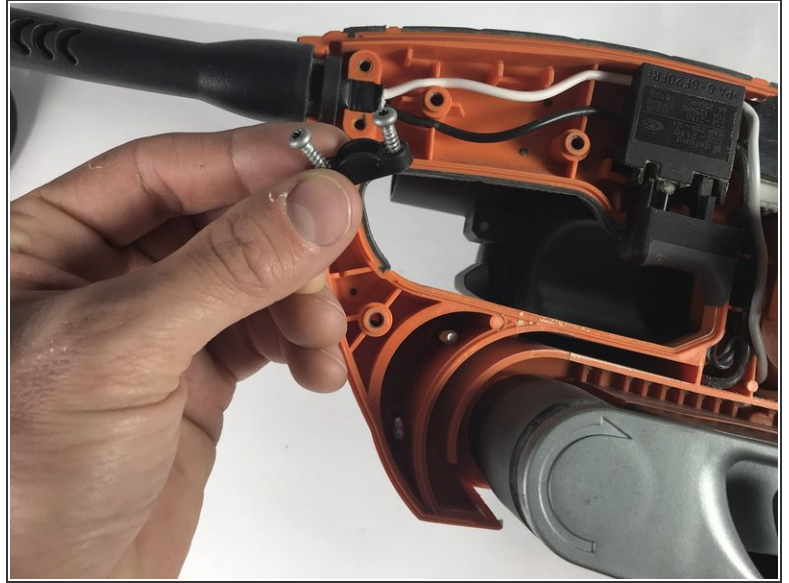
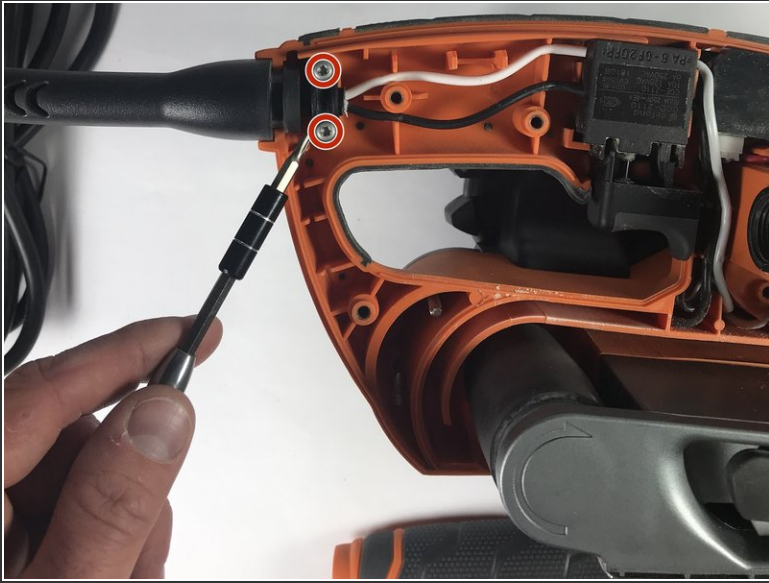
- [T20 Torx Screwdriver](#) (1)
 - [T10 Torx Screwdriver](#) (1)
 - [Phillips #3 Screwdriver](#) (1)
-

Step 1 — Power Cord



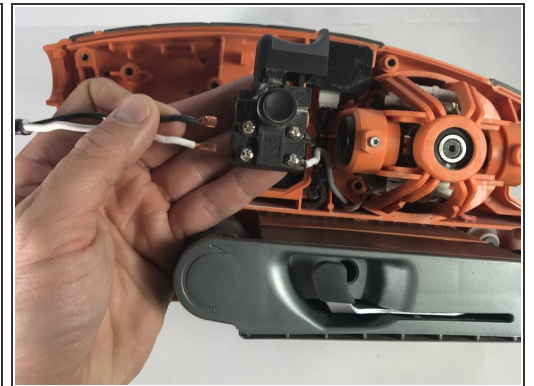
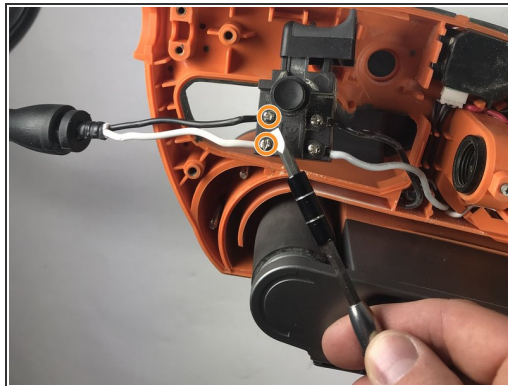
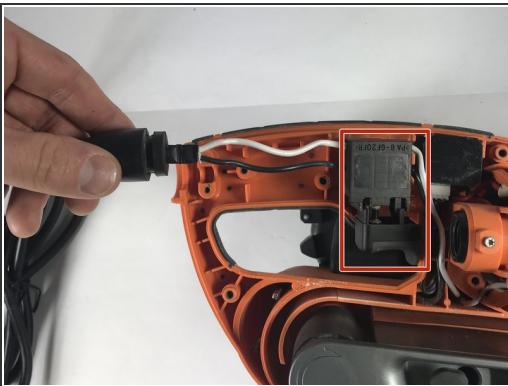
- Orient the belt sander so that the RIDGID logo is facing you.
- Remove the six 19 mm and three 51 mm T20 screws that hold the cover into place.
- Remove the cover from the belt sander.
- ⓘ Make sure you remember the correct placement of each screw.

Step 2



- Remove the two 16 mm T10 screws.
- Remove the support bracket that holds the power cord into place.

Step 3



- Lift the power cord from the resting grooves.
- Rotate the switch so that the lock-on button is facing you.
- Loosen the two 8 mm Phillips #3 screws.
- Pull the two wires away from the switch.

To reassemble your device, follow these instructions in reverse order.