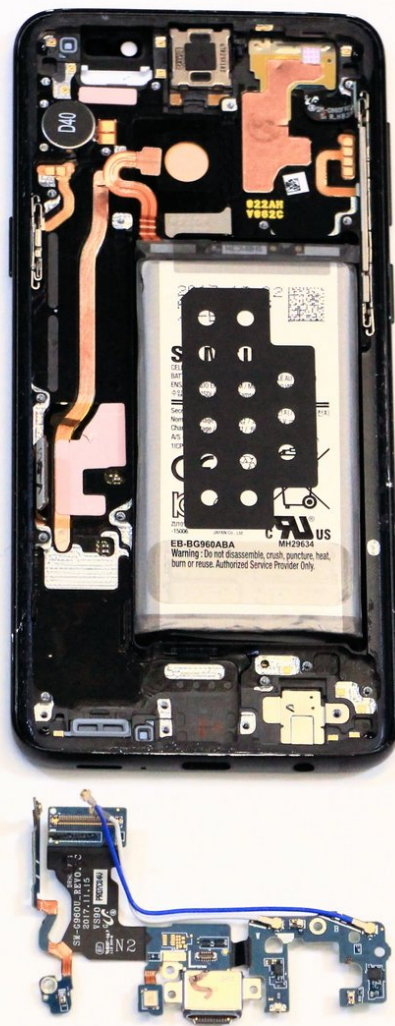




# Samsung Galaxy S9 Charging Port Replacement

How to replace the charging port on a Samsung Galaxy S9.

Written By: Sam Azevedo



## INTRODUCTION

The charging port is the connection point where the charging cable goes in to feed power to the device. You may want to check our troubleshooting page first to verify that there isn't a problem with the software of the device.

If the problem turns out to be a hardware problem, then you will have to replace the charging port board on your device.

Be forewarned- replacing this part involves breaking your phone's waterproof seal. If you want your phone to keep its waterproof capabilities, you will have to replace the seal.



### TOOLS:

- [Spudger](#) (1)
- [Phillips #000 Screwdriver](#) (1)
- [iFixit Opening Tool](#) (1)
- [iFixit Opening Picks \(Set of 6\)](#) (1)
- [iOpener](#) (1)
- [Suction Handle](#) (1)



### PARTS:

- [Galaxy S9 Rear Glass Panel/Cover](#) (1)
- [Galaxy S9 Rear Cover Adhesive](#) (1)
- [Galaxy S9 \(US\) Charging Daughter Board](#) (1)

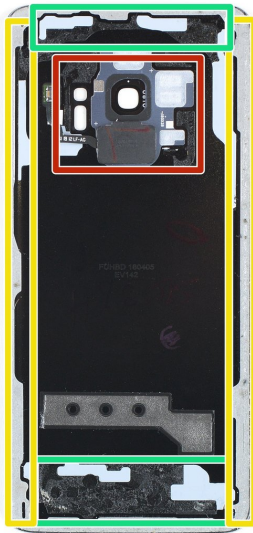
## Step 1 — Rear Glass Removal



- Before you begin, switch off your phone.
- Apply a [heated iOpener](#) to a long edge of the phone to loosen the adhesive beneath the rear glass. Apply the iOpener for at least two minutes.
- ⓘ You might need to reheat and reapply the iOpener several times during the removal procedure to get the adhesive warm enough to cut. Follow the iOpener instructions to avoid overheating.

**⚠** The adhesive of the Samsung Galaxy S9 is very strong. A hair dryer, heat gun, or hot plate may also be used if you aren't able to open the device with the iOpener. Be careful not to overheat the phone—the AMOLED display and internal battery are both susceptible to heat damage.

## Step 2



- In the following steps, you'll be cutting through the adhesive securing the back cover.
- ⓘ The adhesive in the inside of the back cover is laid out as seen in the image.
- You'll be slicing through the adhesive in the areas shown:
  - Thick portions of adhesive
  - Thin areas of adhesive
- **Avoid prying or slicing in this area, to protect the fingerprint sensor flex cable.**

## Step 3



- ❗ If the phone's rear glass is cracked, the suction cup may not stick. Try [lifting it with strong tape](#), or superglue the suction cup in place and allow it to cure so you can proceed.
- Press a suction cup onto the back cover.
- Lift the back cover's bottom edge with your suction cup, opening a slight gap between the back cover and the frame.
- ❗ This may require a significant amount of force, but you only need to open a very slight gap with the suction cup to insert your tool. If you have trouble, apply more heat to further soften the adhesive, and try again. The adhesive cools very fast, so you may need to heat it repeatedly.
- Insert an opening pick in the gap you created and slide it to the bottom right corner.
- Insert a second opening pick and slide it to the bottom left corner.
- Insert a third opening pick to prevent the adhesive from resealing during the rest of the removal procedure.

## Step 4



- While inserting only the tip of the opening pick, slide it from the bottom left corner along the side to the top.
- Slide the pick around the top corner and leave it there to prevent the adhesive from resealing.



## Step 5



- Slide the opening pick from the bottom right corner along the side to the top.

⚠ **Apply more heat** if the adhesive becomes hard to cut. During the removal process, the back cover is under tension all the time and is likely to break if the adhesive isn't softened enough.

- Slide the opening pick around the corner and cut the remaining adhesive at the top of the phone.

⚠ **Don't open the phone all the way yet.** The fragile fingerprint sensor cable still connects the back cover to the motherboard.

## Step 6



- Carefully lift the side of the rear glass where the volume button is located.
- Use the edge of a spudger to pry up and disconnect the fingerprint sensor flex cable.

This document was generated on 2022-08-09 11:26:21 AM (MST).

## Step 7



- Remove the rear glass.
- ★ When reassembling [follow this guide](#) to replace the adhesive and reinstall the rear glass.
- ★ In case you want to replace your rear glass [follow this guide](#) to transfer the rear camera bezel including the fingerprint.

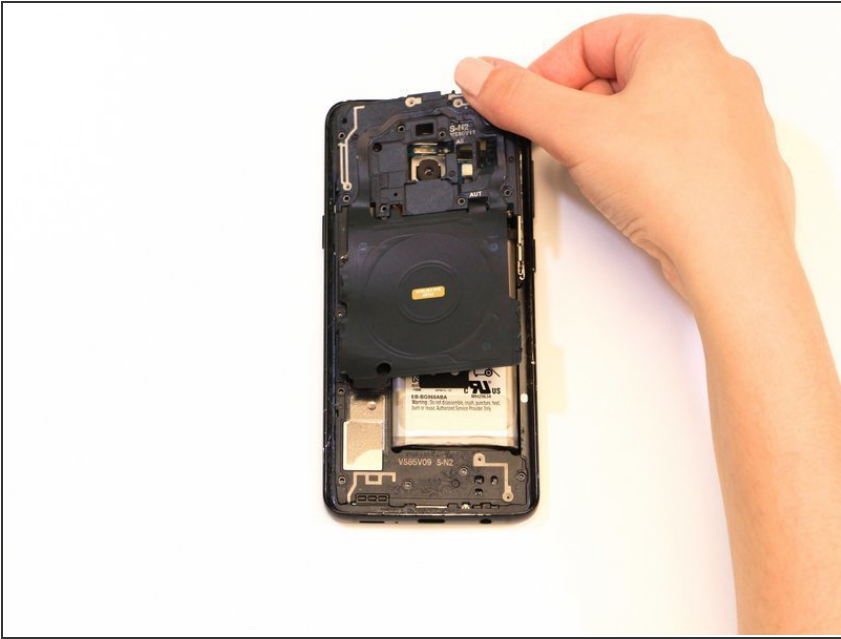
## Step 8 — Midframe assembly



- Remove fifteen 4mm screws with a #000 Phillips screwdriver.

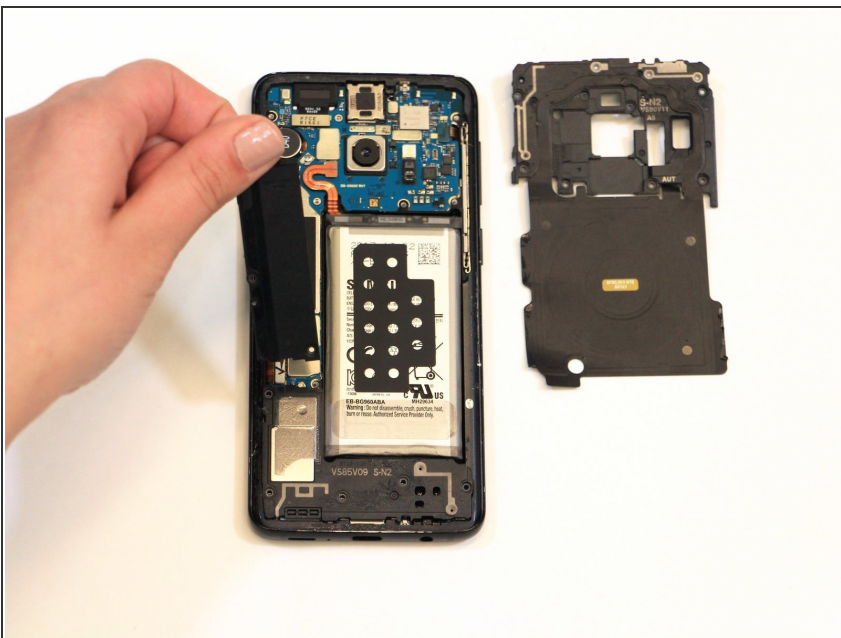


## Step 9



- Remove the NFC coil assembly.

## Step 10



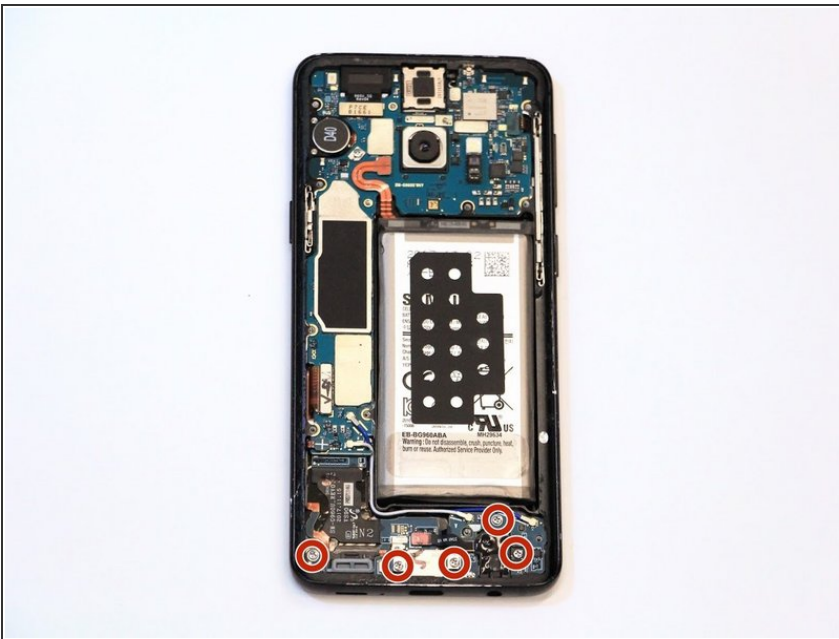
- Remove the motherboard bracket.

## Step 11



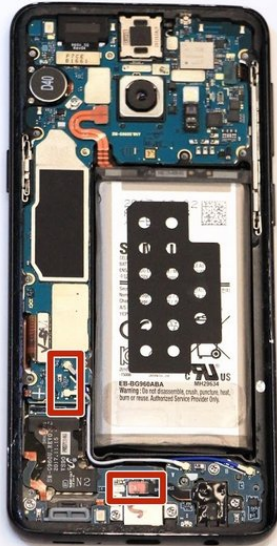
- Remove the speaker cover/antenna assembly.

## Step 12 — Charging Port



- Remove five 3mm screws #000 Phillips screwdriver.

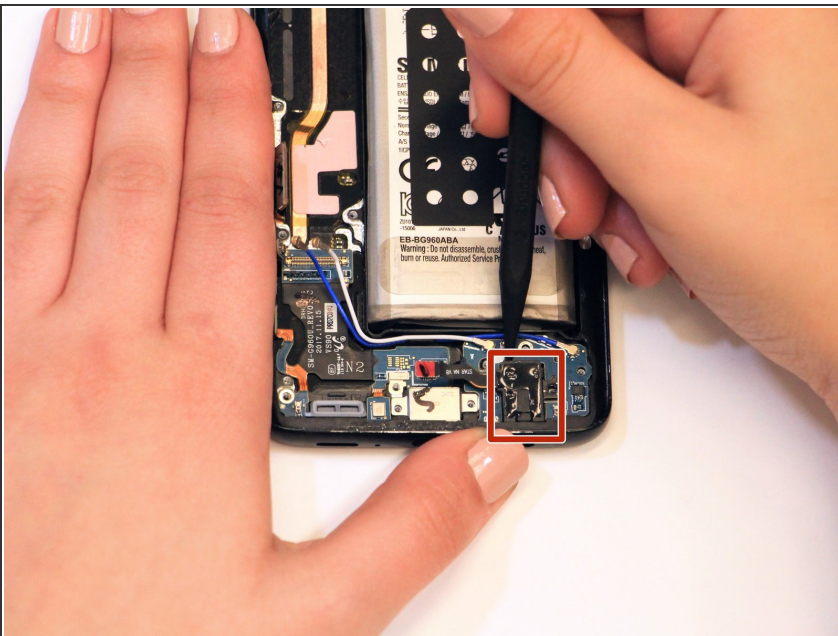
## Step 13



- Disconnect three cables.

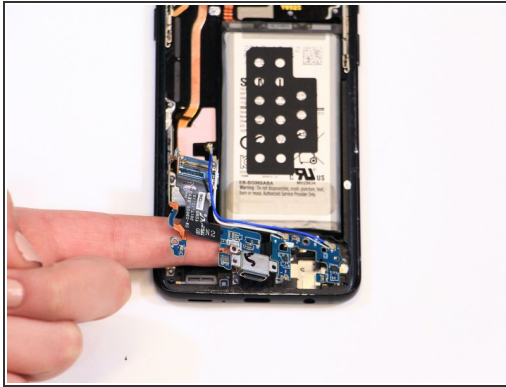
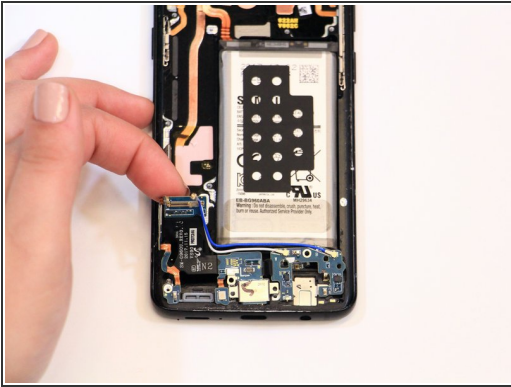
**i** If your replacement charging port does not come with the blue and white cables, you will need to remove them from your old board in order to connect your new one.

## Step 14



- Remove the headphone jack by using a spudger to pry it free.

## Step 15



- Remove charging port board.

To reassemble your device, follow these instructions in reverse order.