



HP Stream 11-d010nr Wifi Chip Replacement

Learn how to replace a faulty or damaged wifi chip in an HP Stream 11-d010nr laptop.

Written By: Zachary Heisler



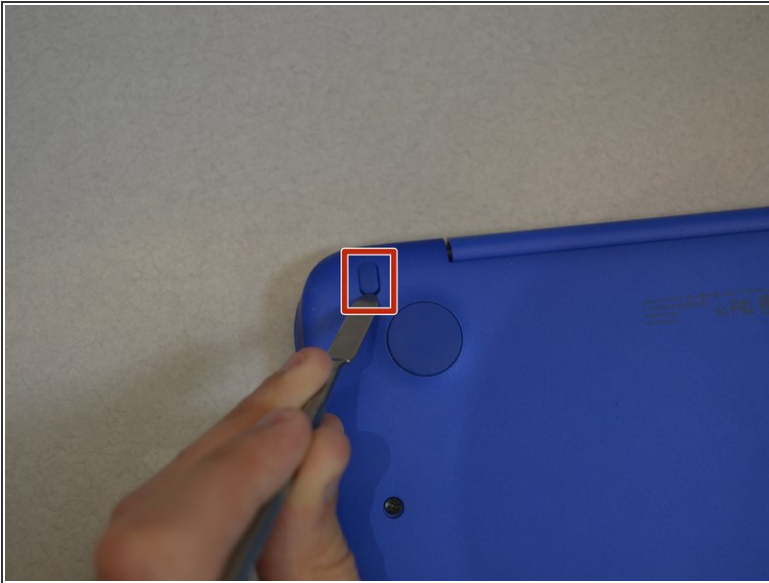
INTRODUCTION


If your HP Stream 11-d010nr is showing signs of a faulty or damaged wifi chip, such as being unable to consistently connect to a wifi signal, its wifi card may need to be replaced. This guide will show you the steps needed to do so.

TOOLS:

- [JIS #1](#) (1)
 - [Tweezers](#) (1)
 - [Phillips #000 Screwdriver](#) (1)
 - [iFixit Opening Tools](#) (1)
 - [Metal Spudger](#) (1)
-

Step 1 — Keyboard



 Unplug and turn off the HP Stream 11 before disassembling the device.

- Pry off the two elliptical rubber inserts (one in each corner).
- Pry off the two circular rubber inserts below the removed elliptical inserts (one in each corner).

Step 2



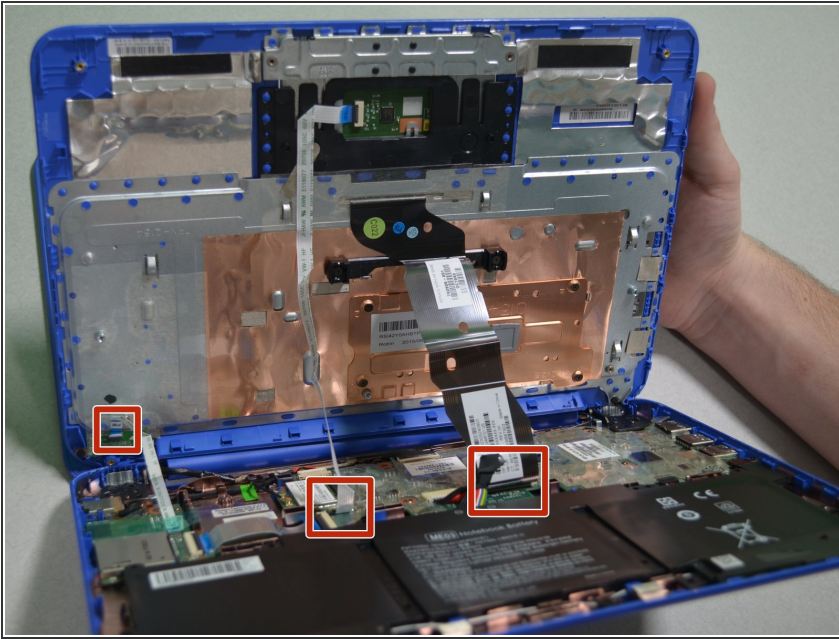
- Remove the eleven 5.6 mm Phillips #1 screws.

Step 3



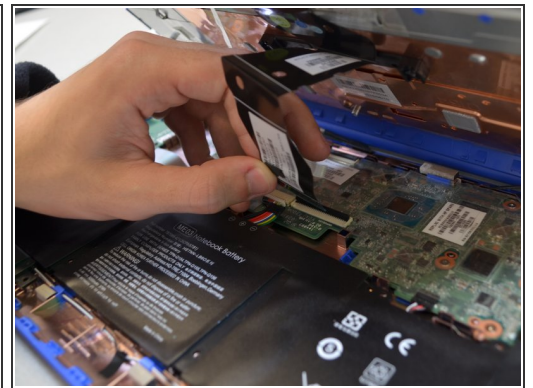
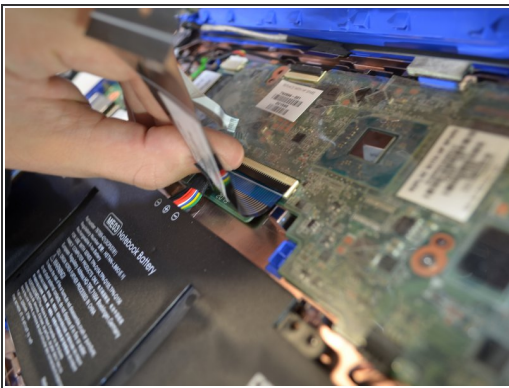
- Using an iFixit opening tool, pry open the case to separate the keyboard from the main body.
- ⓘ HP Stream 11s tend to be really difficult to open. If your device is not opening with a standard iFixit opening tool, use a nylon spudger, then the metal spudger, or a metal Jimmy as the last resort.
- ⚠ When using the metal spudger or Jimmy, be careful not to bring these tools into contact with any electronic components of the device as this can damage the device.

Step 4



- ⚠ Slowly lift the keyboard as there are multiple ribbon cables that could easily be damaged if lifted with force.
- Carefully lift the keyboard and locate the three ribbon cables connecting the main body of the laptop to the keyboard.

Step 5



- Using your fingernail, lift the flaps on the ZIF connectors that are securing the three ribbon cables.
- Carefully disconnect the three ribbon cables.

Step 6



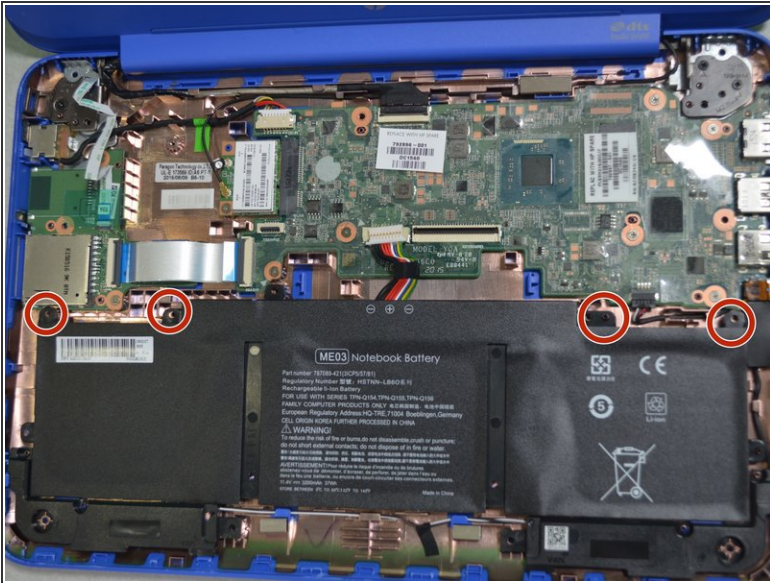
- Lift the keyboard out of the laptop to remove it from the device.

Step 7 — Battery



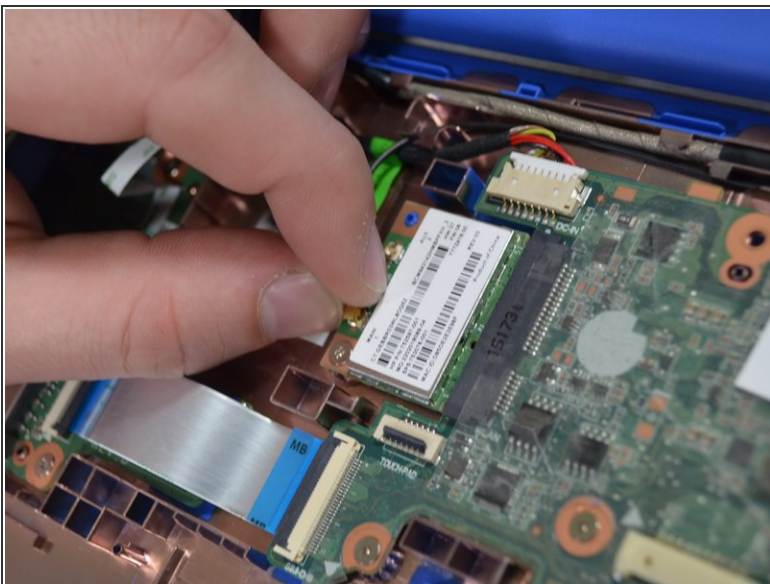
- Remove any tape holding the battery connector in place.
- Using your fingers, carefully unplug the battery.

Step 8



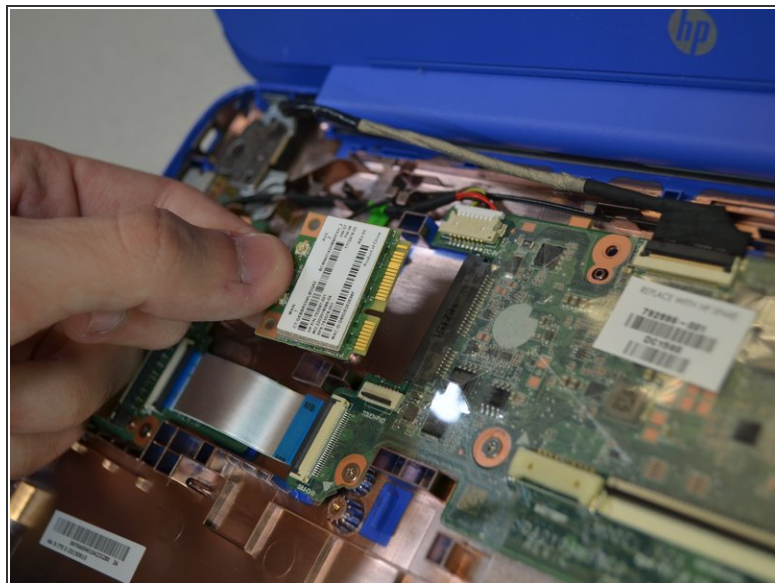
- Remove the four 3mm #000 Phillips screws holding the battery in place.
- Carefully lift the battery out of the laptop.

Step 9 — Wifi Chip



- Unplug the black wire attached to the wireless chip.

Step 10



- Remove the one 3mm Phillips #000 screw holding the wireless chip in place.
- Lift the wireless chip up and out.

To reassemble your device, follow these instructions in reverse order.