



# JBL Charge 4 Charging Port Bay Replacement

How to replace the charging port bay in your JBL Charge 4. (Model: CHARGE4S)

Written By: Zachary Colwell



---

## INTRODUCTION

The charging port bay contains the USB-C port required to charge your JBL Charge 4. It also includes an AUX port to play music and a USB out port to charge your device. If one or more of these ports is not working this guide will show you how to replace them. This guide requires knowledge of desoldering. Find a guide on soldering and desoldering [here](#).



### TOOLS:

- [iFixit Opening Tool](#) (1)
  - [Phillips #0 Screwdriver](#) (1)
  - [Soldering Workstation](#) (1)
-

## Step 1 — Speaker Grille



- Flip your speaker over and insert the plastic opening tool into the slit on the grille.
- Pry away from yourself towards the back of the speaker to release the clip.
- Repeat this process for the clip on the other side.

## Step 2



- Remove the two 8mm Phillips #0 screws from the other edge of the grille.



### Step 3



- Pull apart both sides of the grille.
- Lift the cover off of the speaker.

### Step 4 — Passive Bass Radiators



- Using the plastic opening tool, lift the tab on top of the speaker to release the radiator from the clips.
- Repeat this process on the other clips around the radiator to release it from the frame.

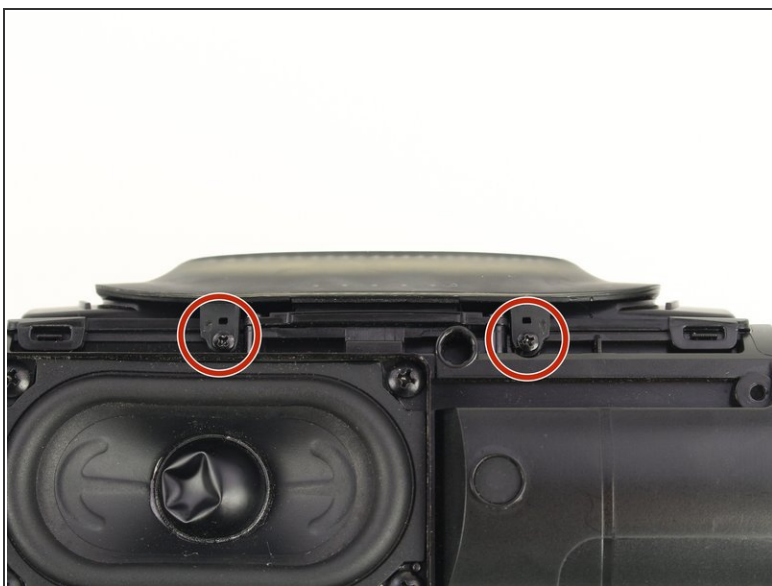
## Step 5



- Push the radiator off of the frame of the device.
- Repeat on the other side.

**⚠ The passive bass radiators seal out water from inside the device. Removing them multiple times may compromise the waterproof nature of the speaker.**

## Step 6 — Charging Port Bay



- Remove the two 6mm Phillips #0 screws from either side to remove the port bay cover.

## Step 7



- There are two hooks that attach the opposite side of the port bay cover to the device. Slide the cover back and off the hooks.
- Remove the port bay cover.

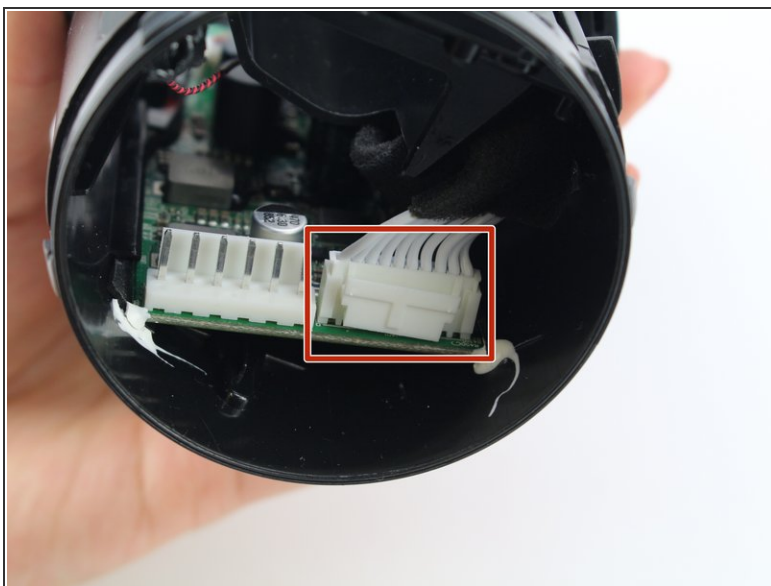


## Step 8



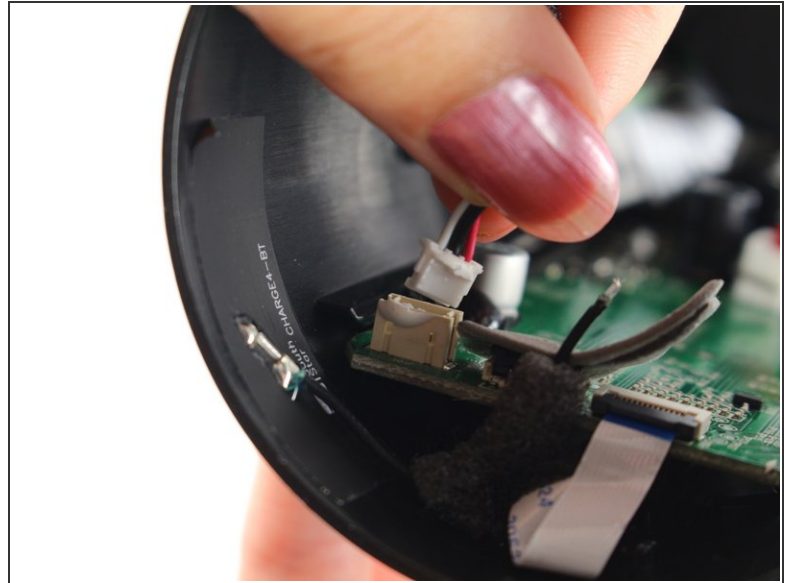
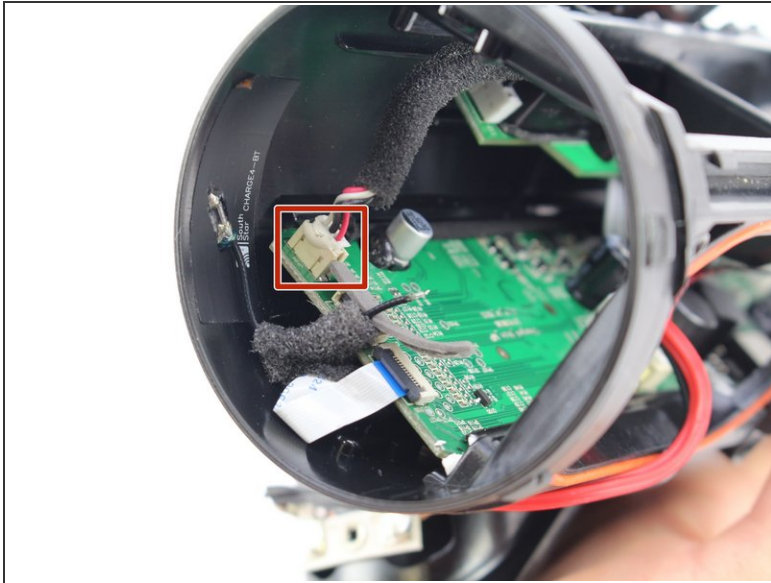
- Remove the six 6mm Phillips #0 screws.

## Step 9



- ⓘ Before removing port bay you must detach the connecting tabs on either side of the device.
- Press on the tab and gently pull out the wire connector.

## Step 10



- Remove the second connector on the opposite side by gently pulling it out.

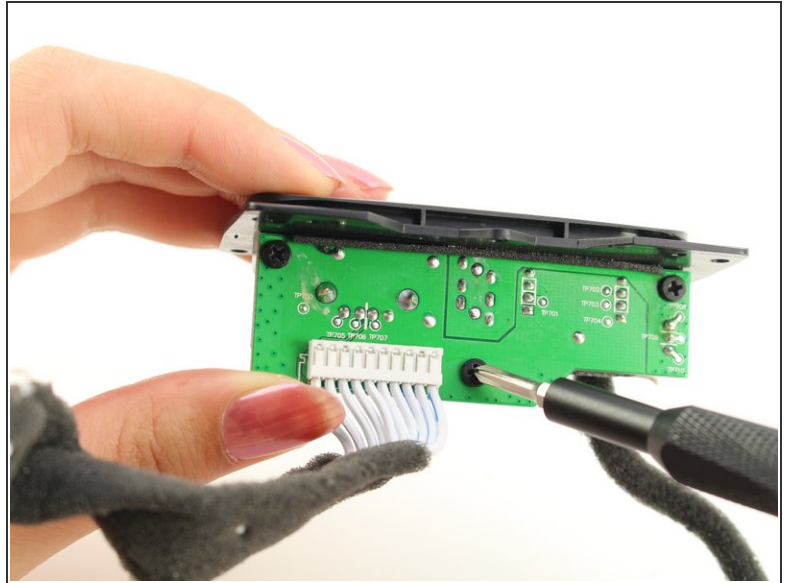
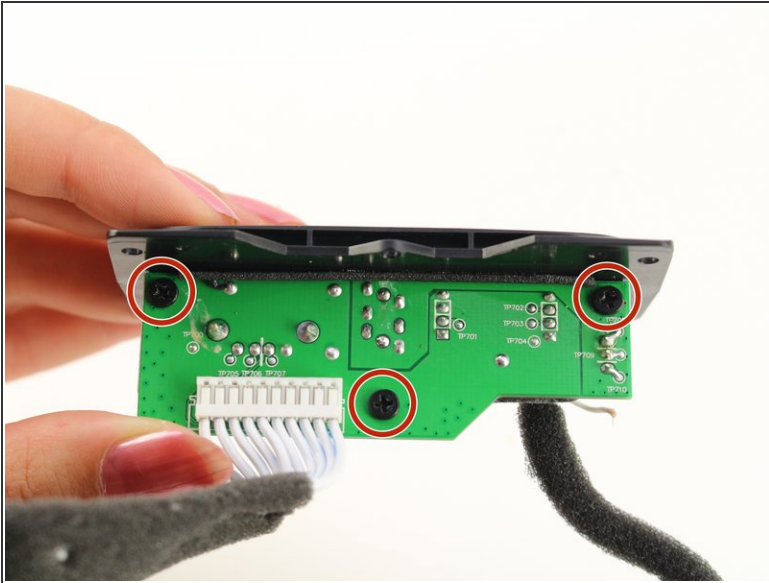
## Step 11



- Remove the port bay from the device and place the device to the side.

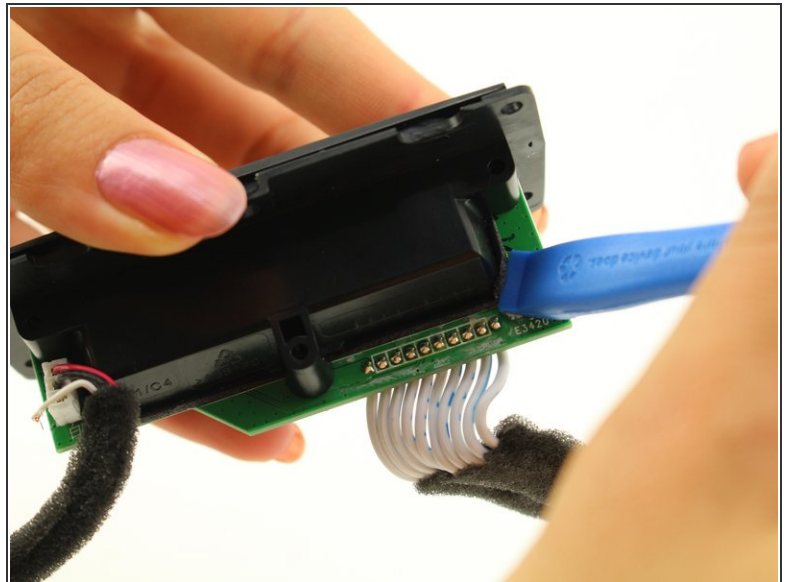
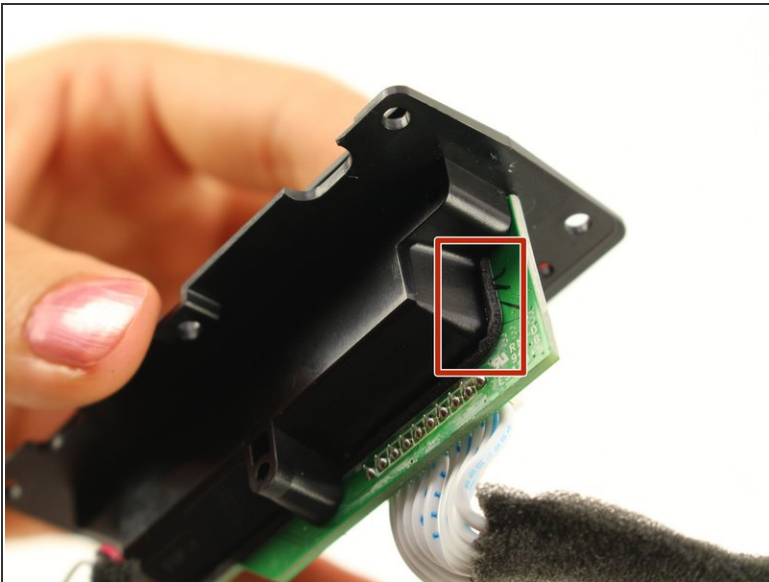


## Step 12



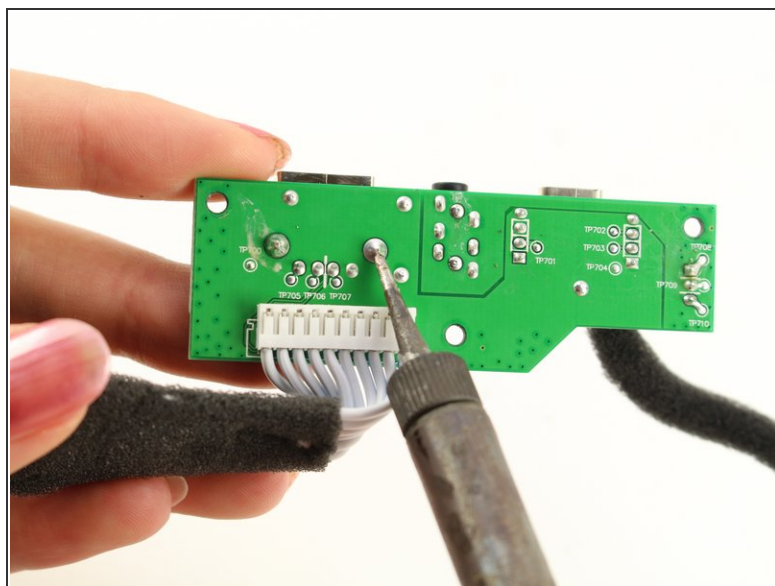
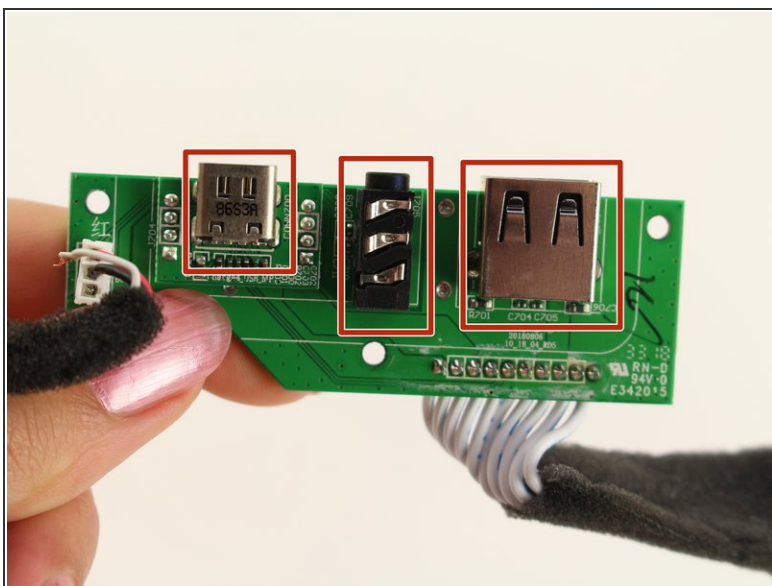
- Remove the three 9mm Phillips #0 screws from the board.

## Step 13



- Using the plastic opening tool, lift the board from the port bay holder.

## Step 14



- Choose which port you want to replace.
- Turn the board around and desolder the connection to remove the chosen port.
- ❗ A guide for soldering and desoldering can be found [here](#).

To reassemble your device, follow these instructions in reverse order.