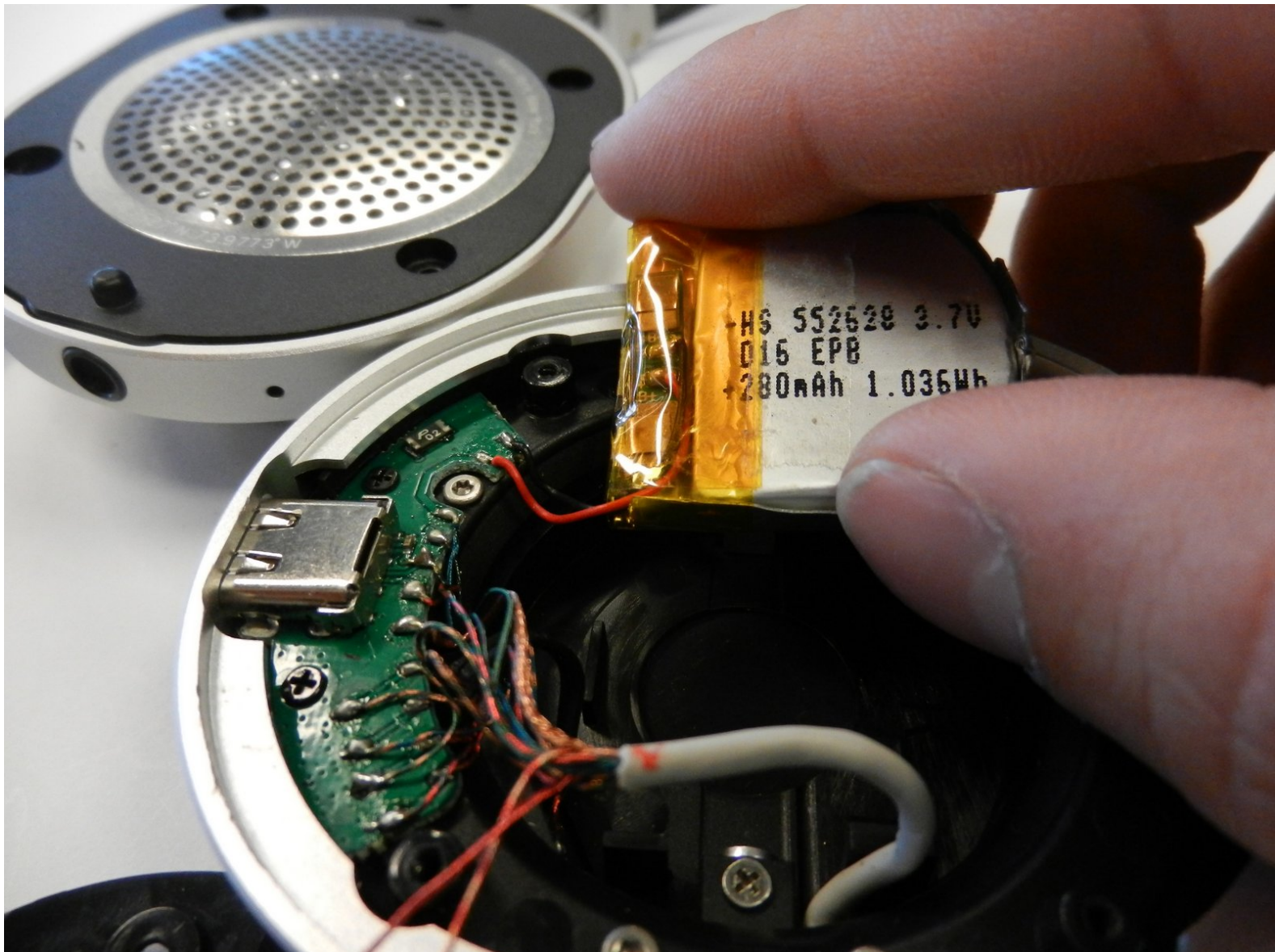




Master and Dynamic MW50 Battery Replacement

How to disconnect and replace your Master and Dynamic MW50 battery.

Written By: Tyler Guffey



INTRODUCTION

In order to safely replace or check other parts for this device, it is sometimes necessary to first disconnect the battery. This will also allow you to replace the battery if you determine it to be faulty. You will need to unsolder and solder to replace your battery, and there is an [attached guide](#) to show you how. You will be disassembling the right side of the headphones.



TOOLS:

- [Desoldering Braid](#) (1)
 - [Solder](#) (1)
 - [Soldering Iron](#) (1)
 - [Staples](#) (1)
 - [iFixit Opening Tools](#) (1)
 - [Jimmy](#) (1)
 - [Y1 Tri-point Screwdriver](#) (1)
-

Step 1 — Master and Dynamic MW50 Disassembly



- Pull the cushion off of the desired side by gripping the top of the headphones and pulling the cushion off.

Step 2



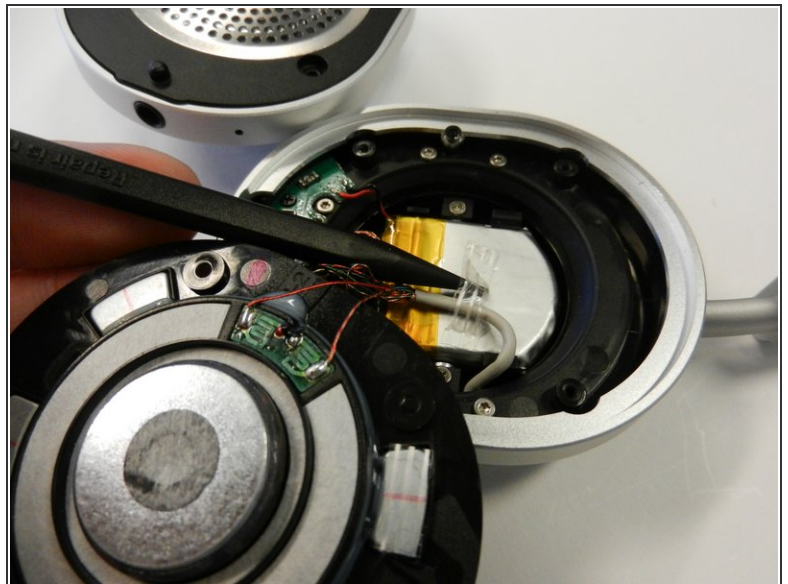
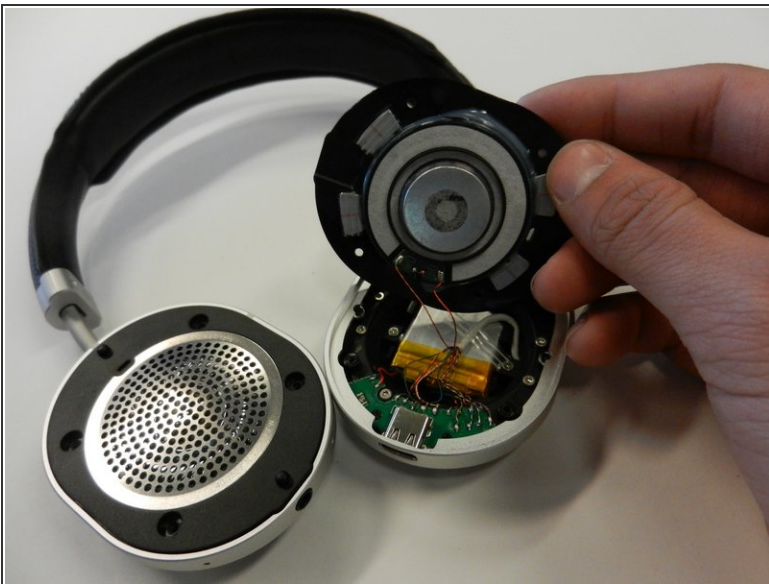
- Remove the four 5mm screws from the earpiece with a Y1 Triwing screwdriver.

Step 3



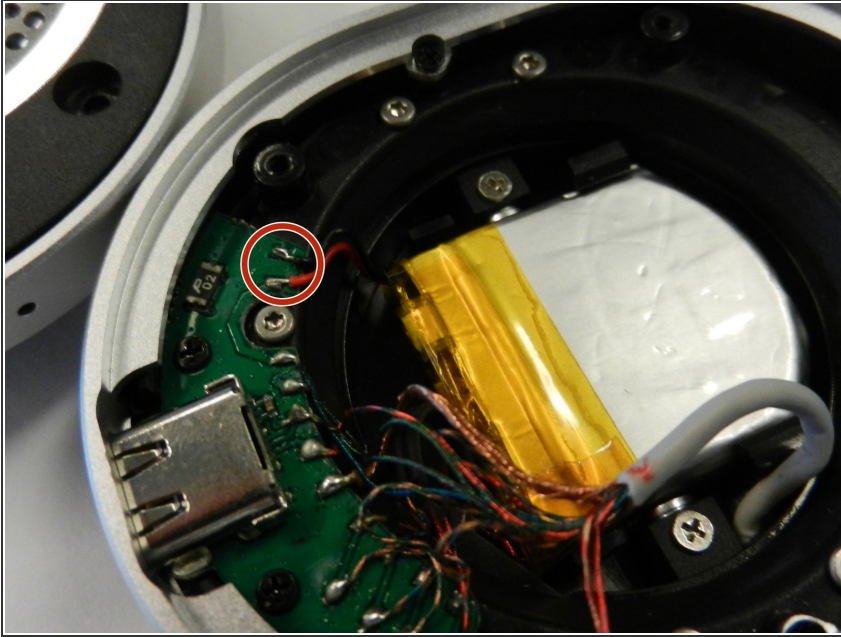
- Use the Jimmy to lift up the black cover to get inside the device.

Step 4 — Battery



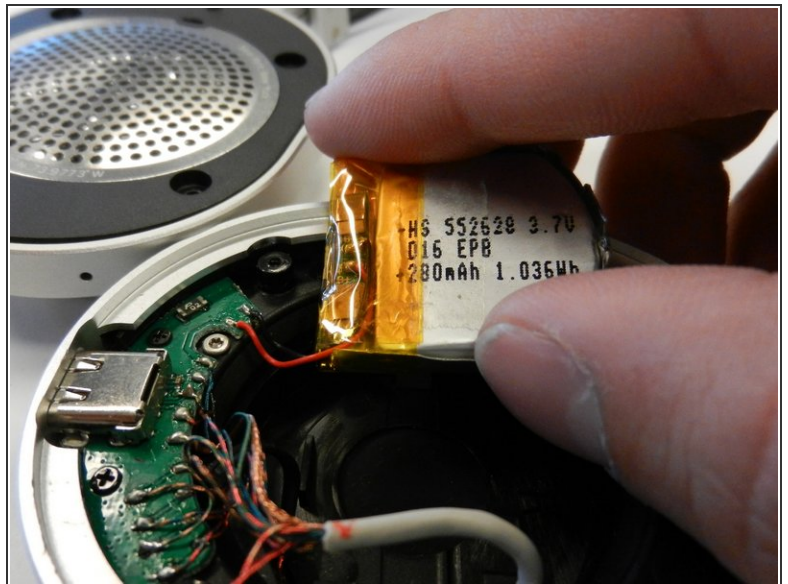
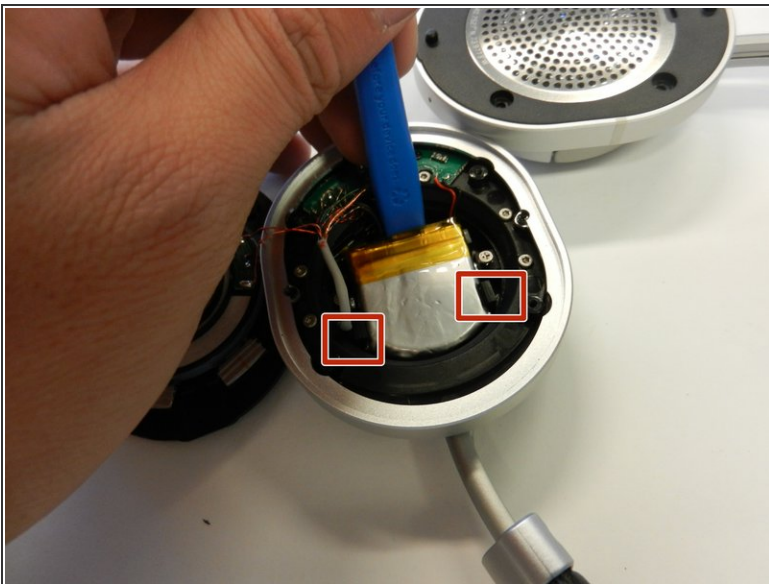
- Remove the tape attaching the thicker white wire to the battery. You may consider keeping the tape to reattach the wire later.

Step 5



- Desolder the two wires circled here.

Step 6



- Use an iFixit opening tool or something similar to pry out the battery.
- There are two small tabs circled here that are holding the battery in. Push these down while prying to make the battery come out easier.

To reassemble your device, follow these instructions in reverse order.