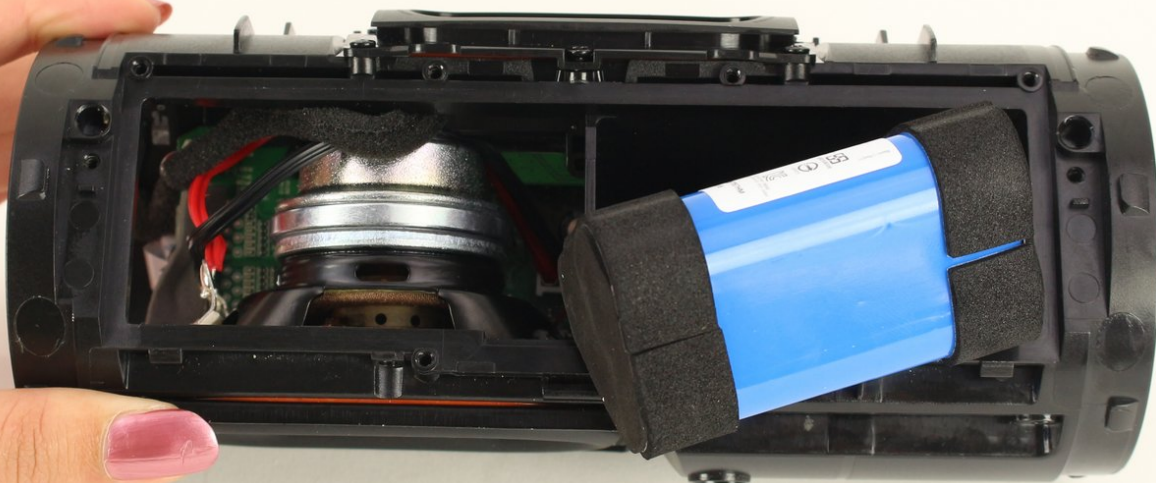




JBL Charge 4 Battery Replacement

This guide will show you how to replace the JBL Charge 4 battery. (Model: CHARGE4S)

Written By: Sydney Seto



INTRODUCTION

The battery is necessary for the JBL Charge 4 to power up and work properly. It also is responsible for charging your phone when connected to the USB out port. If you notice decreased battery life your battery may be dying. This guide will show you how to replace the battery in your JBL Charge 4.



TOOLS:

- [iFixit Opening Tools](#) (1)
- [Phillips #0 Screwdriver](#) (1)
- [Spudger](#) (1)
- [Tweezers](#) (1)



PARTS:

- [JBL Charge 4 Replacement Battery](#) (1)

Step 1 — Speaker Grill



- Flip your speaker over and insert the plastic opening tool into the slit on the grille.
- Pry away from yourself towards the back of the speaker to release the clip.
- Repeat this process for the clip on the other side.

Step 2



- Remove the two 8mm Phillips #0 screws from the other edge of the grille.

Step 3



- Pull apart both sides of the grille.
- Lift the cover off of the speaker.

Step 4 — Passive Bass Radiators




- Using the plastic opening tool, lift the tab on top of the speaker to release the radiator from the clips.
- Repeat this process on the other clips around the radiator to release it from the frame.

Step 5



- Push the radiator off of the frame of the device.
- Repeat on the other side.

 The passive bass radiators seal out water from inside the device. Removing them multiple times may compromise the waterproof nature of the speaker.

Step 6 — Battery



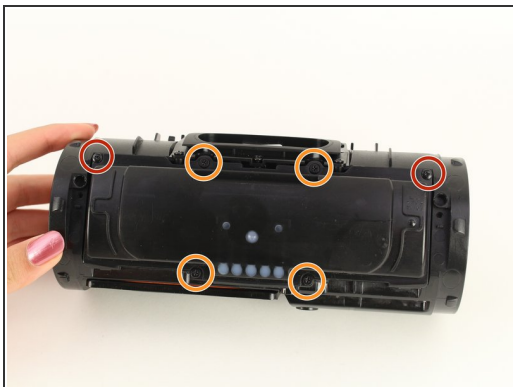
- Remove the two 6mm Phillips #0 screws on the front side of the port bay cover.

Step 7



- Gently slide the cover back and off the hooks.
- Remove the port bay cover.

Step 8



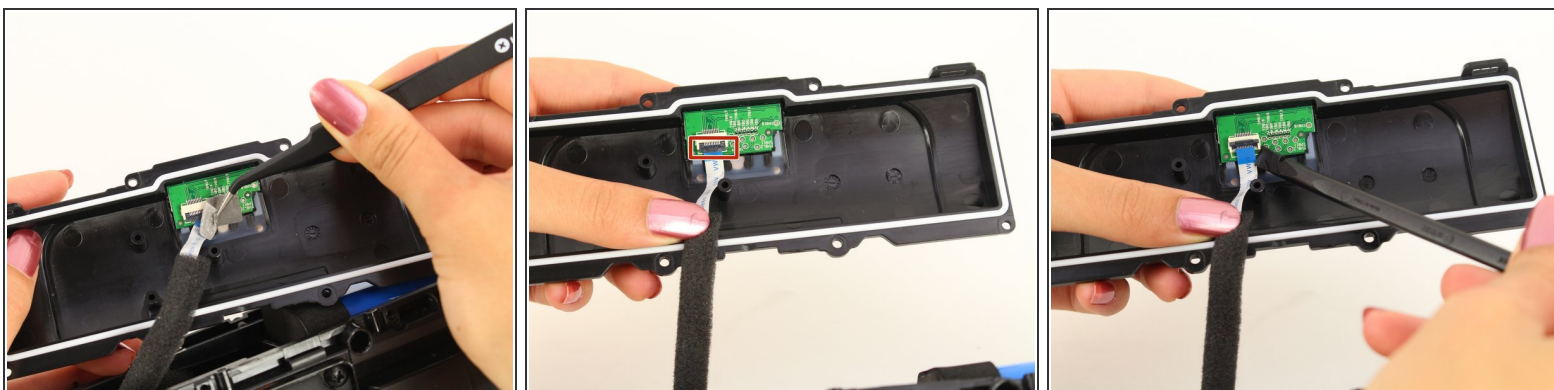
- Remove the two 6mm Phillips #0 screws.
- Remove the four 8mm Phillips #0 screws.

Step 9



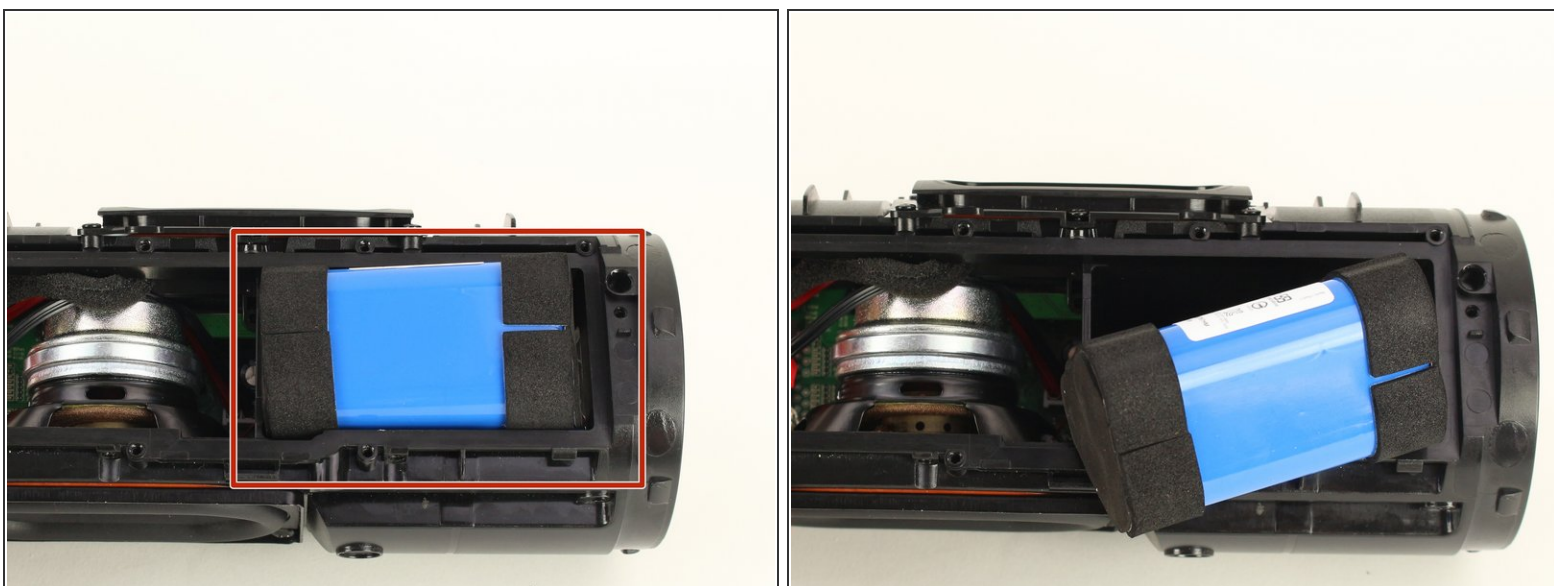
- Lift up the battery cover.

Step 10



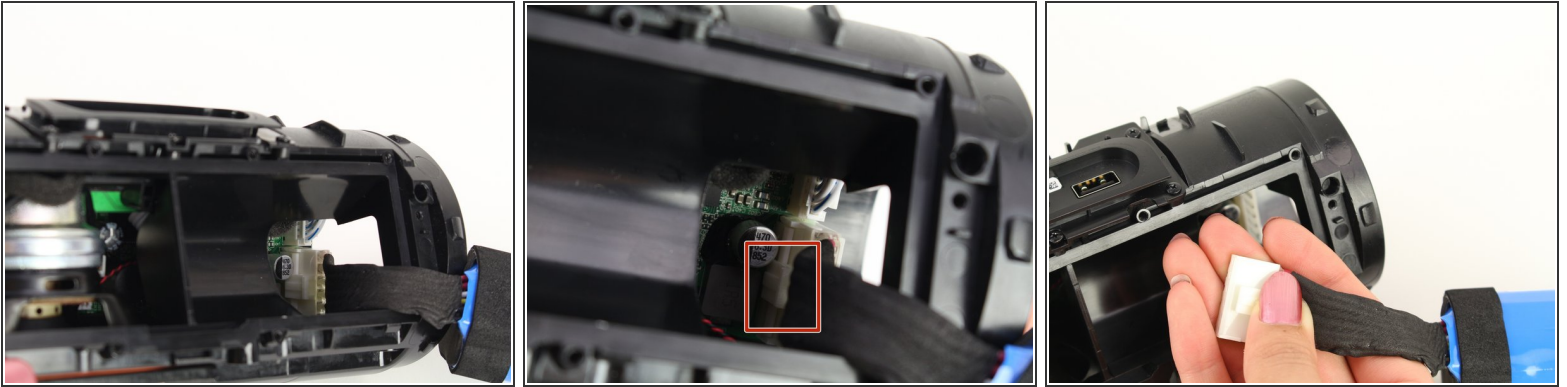
- Remove the sticky tape to expose the white ribbon cable ZIF connector.
- Flip up the black locking flap on the ZIF connector with the tip of a spudger or your fingernail to release the cable.
- Remove the white ribbon cable from the battery cover and place the cover to the side.

Step 11



- Remove the battery from the battery socket by gently pulling on it.

Step 12



- Pull out the battery enough to expose the battery's wire connector.
- Push down on the white tab and gently pull out the battery-device connector.

To reassemble your device, follow these instructions in reverse order.