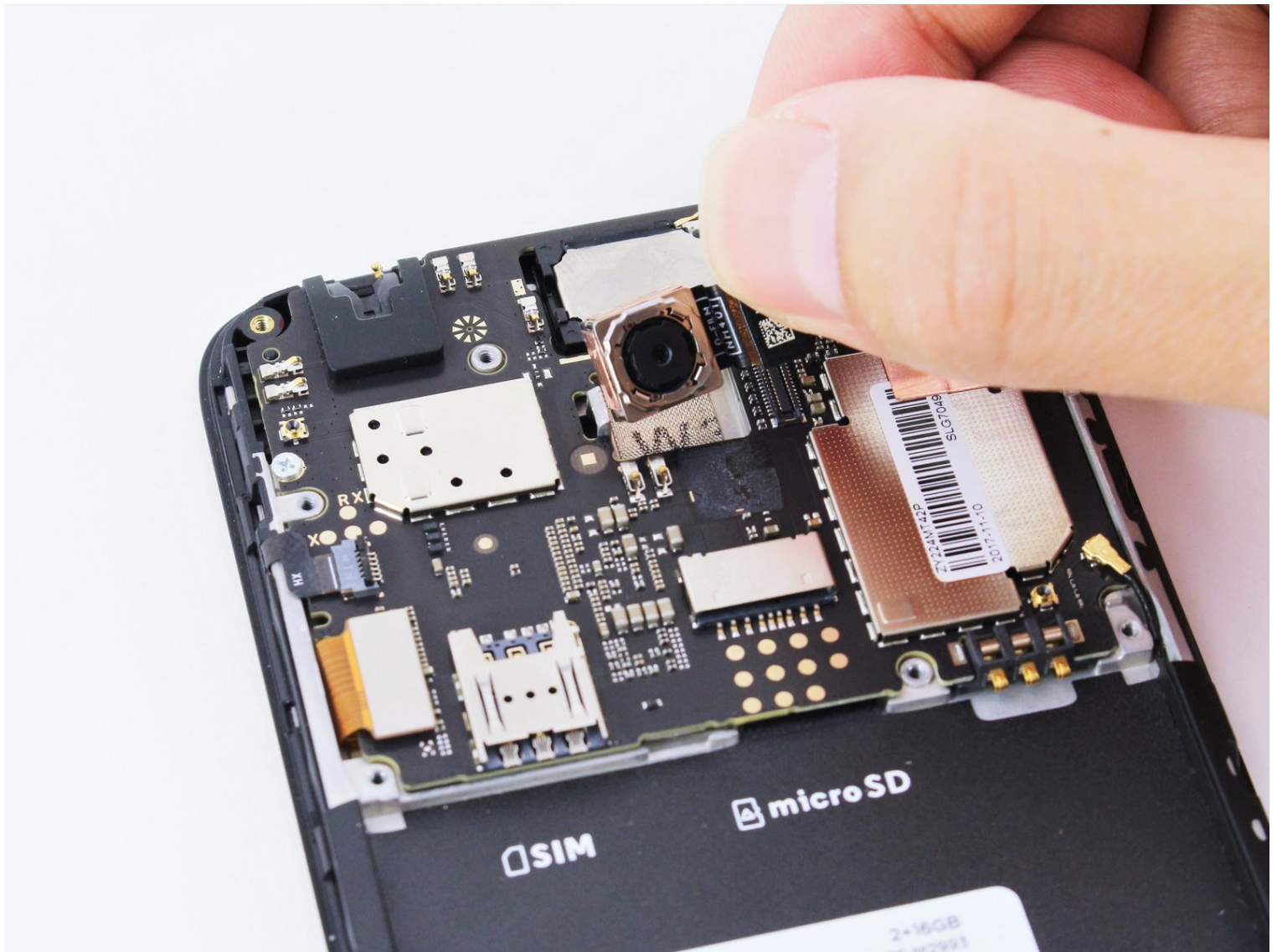




Motorola Moto E4 Rear Facing Camera Replacement

Use this guide to remove or replace your Moto...

Written By: Nate Tjepkema



INTRODUCTION

Use this guide to remove or replace your Moto E4 rear facing camera.

Before you begin, download the [Rescue and Smart Assistant](#) app to backup your device and diagnose whether your problem is software or hardware related.

TOOLS:

[Spudger](#) (1)

[iFixit Opening Tool](#) (1)

[Phillips #00 Screwdriver](#) (1)

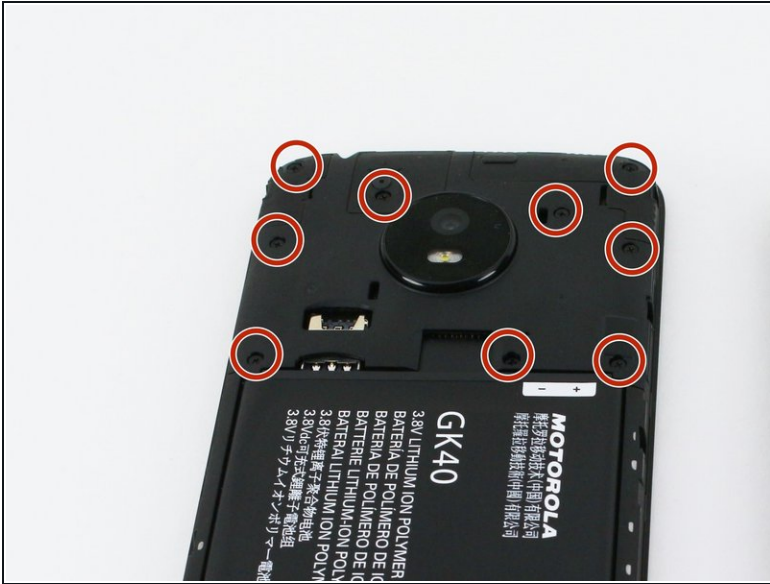
Step 1 — Remove the rear cover



 Before removing the battery, power off your Moto E4.

- Remove the plastic cover by gently prying it up from the notch at the bottom right corner of the phone.
- With the phone face down, lift the battery up by the labeled tab and remove it from the device.

Step 2 — Remove the motherboard cover



i The battery is shown inserted in the Moto E4, but it should be removed before performing the following step.

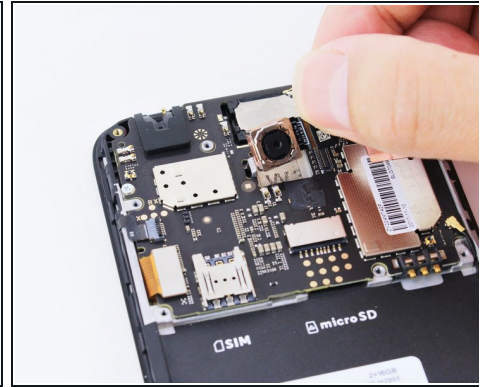
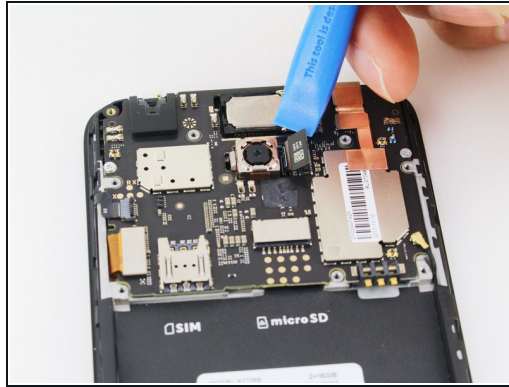
- Remove all nine 4 mm Phillips screws from the top plastic cover.

Step 3



- Gently pry up the plastic cover using a plastic opening tool.
- Start by inserting the tool under the cover's right edge, as indicated by the first picture.
- Pry up, and continue prying around the rest of the cover in a counter clockwise path.
- Once loose, remove the plastic cover from the phone.

Step 4



i This step can be skipped if you are only removing the front-facing camera. For all other repairs, continue as follows.

- Disconnect the rear-facing camera by prying straight up on the connector on its right side.
- Remove the rear-facing camera from the Moto E4.

To reassemble your device, follow these instructions in reverse order.