



# Convert a 360 (Fat) hard drive into a 360 S hard drive

ATTENTION: Technically the Xbox Live ToS...

Written By: Nick

## Storage Devices



All Devices

2 devices



Hard Drive



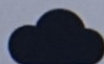
13.8 GB free



Memory Unit



2.9 GB free



Cloud Saved Games

Configure Device

# INTRODUCTION

***ATTENTION: Technically the Xbox Live ToS prohibit this, but the Xbox Live enforcement team (generally) doesn't care about this type of modification unless you are using it for mods and cheats. YOU HAVE BEEN WARNED!!!***

If you have an Xbox 360 4GB console, this guide will show you convert a Fat 360 hard drive to work in an E/S console. This can be used as a low-cost solution to add more storage to a 4GB console and enable OG Xbox emulation. If you are coming from a dead Fat 360, this will allow you to keep using the old drive and minimize transfer downtime.

***NOTE ABOUT DRIVE CAPACITY: Most fat 360 drives are usually only "common" as 20GB or 60GB variants, and will most likely be smaller than the OEM drive for these revisions (120/250GB). Keep this in mind when using one of these drives.***

For this guide, I picked up a used 20GB drive (originally from a Fat 360). These are cheap and abundant and can be used as a significant bump for a 4GB system, but fill up quickly like the 4GB of onboard flash on the E/S base console; they are not good for much beyond game saves. ***For mass storage, if you use one of these, use a 120GB drive if at all possible to copy games to the hard drive.***

## Guide notes

- ***DO NOT FORMAT THE DRIVE EXTERNALLY!!! This will erase the security sector.***
- ***Depending on where you purchased your drive, THIS MAY VOID YOUR WARRANTY. Keep this in mind if you go this route.***
  - ***ALL of these drives are out of warranty today with Microsoft. This is an issue for shops like GameStop which have a brief warranty that comes with the drive. If there is no "warranty" on the drive, then there is nothing to void.***
  - ***Since most Fat 360 consoles are dead (and all surviving ones will fail), it may be better to purchase a tested drive.***
- ***Most Fat 360 drives are 20GB or 60GB.*** Fat 120GB drives are uncommon and are priced to match.
  - ***Consider your storage needs before buying one of these early drives.***
- ***You must use an aftermarket enclosure. OEM drives are glued shut and will not re-seal.***
  - 3rd party enclosures are not hard to find but are typically only sold online.

## TOOLS:

### Essential Electronics Toolkit (1)

**T6 and T10 required**

*Used to open the Fat 360 hard drive.*

## PARTS:

### Xbox 360 Hard Drive (Fat) (1)

**20, 60, or 120GB**

*IMPORTANT: THIS WILL VOID ALL WARRANTIES!*

### Xbox 360 Hard Drive Enclosure (S type) (1)

*MUST BE AFTERMARKET. OEM enclosures are glued shut.*

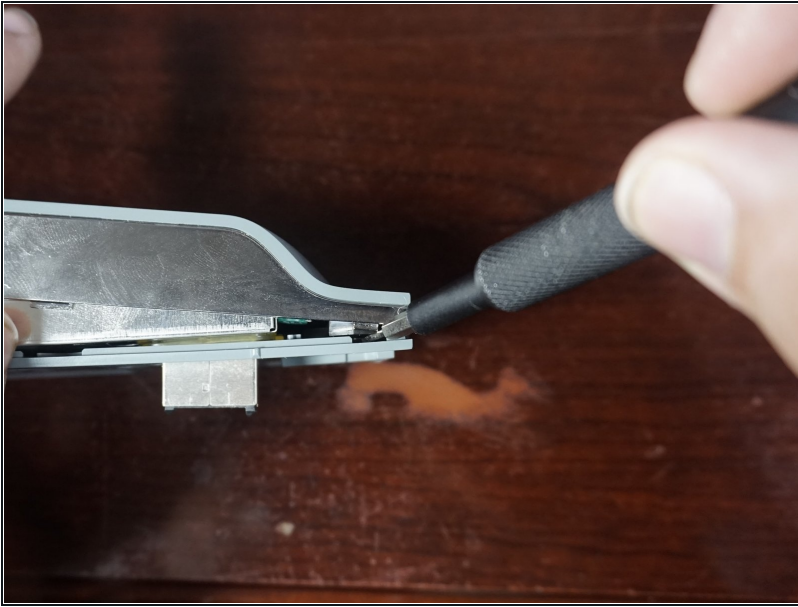
## Step 1 — Remove the bottom screws



**⚠ Buy the drive at a cost you can afford to eat. This will void any warranties offered.**

- Remove the **3 screws** from the bottom of the drive. Use a **T6 Torx** driver.
- Remove the warranty seal and final screw. Use a **T6 Torx** driver.

## Step 2 — Disassembly tip



- ★ **If the drive is difficult to open and you are opening it to put the drive into a later Xbox 360 with no intention to preserve the enclosure, a screwdriver or pry tool can help.**
- i **If you are opening it to replace the drive inside for an original console, it is best to use a plastic pry tool instead. While a screwdriver "works" it will likely mar the enclosure.**

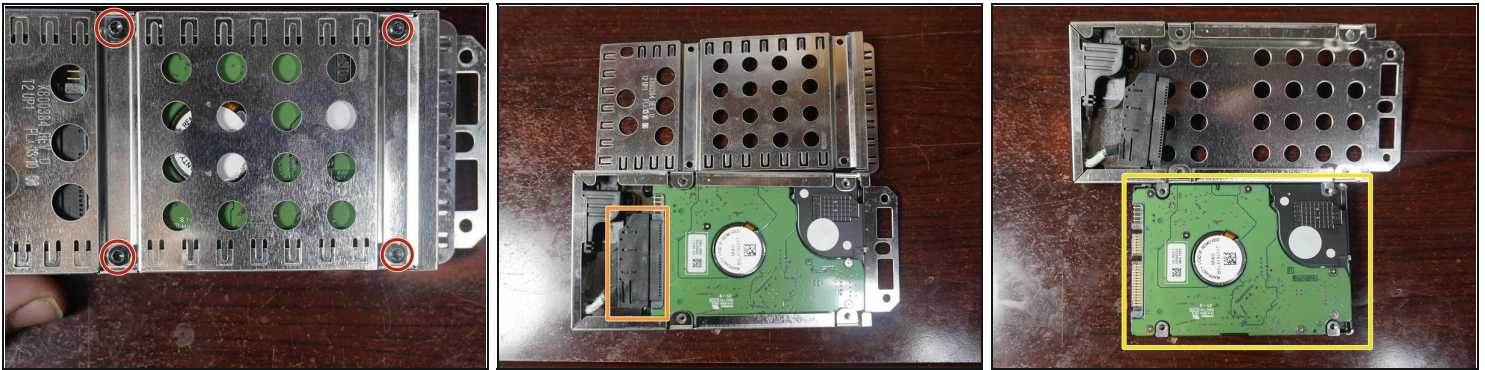
## Step 3 — Open the drive



- ★ If you are taking the enclosure apart for the bare drive, less caution is needed.
- **After removing the 4 bottom screws, remove the top cover. *Remove the spring and locking tab before removing the drive cage.***
- Remove the drive cage from the drive enclosure. ***If the drive has never been opened, additional force may be required.***



## Step 4 — Disconnect and remove the hard drive



- Remove the **four T10 Torx screws** securing the hard drive.
- After removing the screws, **slide the top cover off** and disconnect the drive.
- **Disconnect the hard drive** and remove it from the enclosure.

## Step 5 — Install the hard drive into the new enclosure



**⚠ If you do not use an official hard drive, you will need a WD hard drive, the Xbox hard drive sector security file and HDDhackr to partition the drive. Partition 2 must be restored manually.**

- After removing the drive from the old enclosure, open the new enclosure.
- Put the drive in the enclosure label side up. **Space may need to be added for 7mm drives.**
- Close the enclosure and install it in your console.